

Oklahoma Corporation Commission  
Oil & Gas Conservation Division  
Post Office Box 52000  
Oklahoma City, Oklahoma 73152-2000  
Rule 165: 10-3-25

Form 1002A

API No.: 35043236990000

**Completion Report**

Spud Date: June 27, 2019

OTC Prod. Unit No.: 043-226012-0-0000

Drilling Finished Date: July 18, 2019

1st Prod Date: August 27, 2019

Completion Date: July 25, 2019

**Drill Type:** HORIZONTAL HOLE

Well Name: PUTNAM OSWEGO UNIT 1-34H

Purchaser/Measurer: ENABLE

Location: DEWEY 34 16N 15W  
SE SW NW NE  
1145 FNL 2300 FEL of 1/4 SEC  
Latitude: 35.8234647 Longitude: -98.781454  
Derrick Elevation: 1721 Ground Elevation: 1701

First Sales Date:

Operator: BLAKE PRODUCTION COMPANY INC 18119

1601 NW EXPRESSWAY STE 777  
OKLAHOMA CITY, OK 73118-1446

Completion Type	
X	Single Zone
	Multiple Zone
	Commingle

Location Exception	
Order No	
There are no Location Exception records to display.	

Increased Density	
Order No	
There are no Increased Density records to display.	

Casing and Cement							
Type	Size	Weight	Grade	Feet	PSI	SAX	Top of CMT
CONDUCTOR	20			80			SURFACE
SURFACE	9 5/8	36	J-55	475		160	SURFACE
INTERMEDIATE	7	26	P-110	9608		300	6847
PRODUCTION	4 1/2	13.5	P-110	14707		520	7016

Liner								
Type	Size	Weight	Grade	Length	PSI	SAX	Top Depth	Bottom Depth
There are no Liner records to display.								

**Total Depth: 14735**

Packer	
Depth	Brand & Type
There are no Packer records to display.	

Plug	
Depth	Plug Type
There are no Plug records to display.	

Initial Test Data
-------------------

Test Date	Formation	Oil BBL/Day	Oil-Gravity (API)	Gas MCF/Day	Gas-Oil Ratio Cu FT/BBL	Water BBL/Day	Pumpin or Flowing	Initial Shut-In Pressure	Choke Size	Flow Tubing Pressure
Aug 29, 2019	OSWEGO	36	43			143	PUMPING		OPEN	

Completion and Test Data by Producing Formation

Formation Name: OSWEGO

Code: 404OSWG

Class: OIL

Spacing Orders

Order No	Unit Size
70029	UNIT

Perforated Intervals

From	To
9680	14673

Acid Volumes

2,222 BARRELS 7.5% HCL, 3,908 BARRELS 3% HCL

Fracture Treatments

787,880 POUNDS 100 MESH SAND, 171,950 POUNDS 40/70 MESH SAND, 46,680 POUNDS 20/40 MESH SAND, 134,068 BARRELS WATER

Formation	Top
COTTAGE GROVE	8192
HOGSHOOTER	8550
CHECKERBOARD	8812
CLEVELAND	8897
BIG LIME	9262
OSWEGO	9365

Were open hole logs run? No

Date last log run:

Were unusual drilling circumstances encountered? No

Explanation:

Other Remarks

There are no Other Remarks.

Lateral Holes

Sec: 35 TWP: 16N RGE: 15W County: DEWEY

SW SW SE SW

151 FSL 1567 FWL of 1/4 SEC

Depth of Deviation: 9025 Radius of Turn: 412 Direction: 135 Total Length: 5040

Measured Total Depth: 14735 True Vertical Depth: 9435 End Pt. Location From Release, Unit or Property Line: 151

FOR COMMISSION USE ONLY

Status: Accepted

1143859

API NO. 043-23699  
OTC PROD. UNIT NO. 043-22692

(PLEASE TYPE OR USE BLACK INK ONLY)

OKLAHOMA CORPORATION COMMISSION

Oil & Gas Conservation Division

Post Office Box 52000

Oklahoma City, Oklahoma 73152-2000

Rule 165:10-3-25

RECEIVED

Form 1002A

Rev. 2009

OCT 18 2019

OKLAHOMA CORPORATION COMMISSION

☒ ORIGINAL  
☐ AMENDED (Reason)

COMPLETION REPORT

TYPE OF DRILLING OPERATION

☐ STRAIGHT HOLE ☐ DIRECTIONAL HOLE ☒ HORIZONTAL HOLE  
☐ SERVICE WELL

If directional or horizontal, see reverse for bottom hole location.

COUNTY	Dewey	SEC	34	TWP	16N	RGE	15W	SPUD DATE	6/27/19
LEASE NAME	Putnam Oswego Unit							DRLG FINISHED DATE	7/18/19
SE 1/4 SW 1/4 NW 1/4 NE 1/4	FNL 1453 1/4 SEC 1445							DATE OF WELL COMPLETION	7/25/19
ELEVATION Derrick FL	1721	Ground	1701	Latitude (if known)	35.8234647			1st PROD DATE	8/27/19
OPERATOR NAME	Blake Production Co., Inc.							RECOMP DATE	
ADDRESS	1601 NW Expressway, Suite 777							OTC / OCC OPERATOR NO.	18119
CITY	Oklahoma City	STATE	OK	ZIP	73118				

640 Acres									
LOCATE WELL									

COMPLETION TYPE

<input checked="" type="checkbox"/> SINGLE ZONE	
<input type="checkbox"/> MULTIPLE ZONE	
<input type="checkbox"/> COMMINGLED	
<input type="checkbox"/> LOCATION EXCEPTION	
<input type="checkbox"/> ORDER NO.	
<input type="checkbox"/> INCREASED DENSITY	
<input type="checkbox"/> ORDER NO.	

CASING & CEMENT (Attach Form 1002C)

TYPE	SIZE	WEIGHT	GRADE	FEET	PSI	SAX	TOP OF CMT
CONDUCTOR	20"			80'			Surface
SURFACE	9 5/8"	36	J55	475		160	Surface
INTERMEDIATE	7"	26	P110	9,608		300	6,847
PRODUCTION	4 1/2"	13.5	P110	14707		520	7016
LINER							
TOTAL DEPTH							14,735

PACKER @ \_\_\_\_\_ BRAND & TYPE \_\_\_\_\_ PLUG @ \_\_\_\_\_ TYPE \_\_\_\_\_ PLUG @ \_\_\_\_\_ TYPE \_\_\_\_\_  
PACKER @ \_\_\_\_\_ BRAND & TYPE \_\_\_\_\_ PLUG @ \_\_\_\_\_ TYPE \_\_\_\_\_ PLUG @ \_\_\_\_\_ TYPE \_\_\_\_\_

COMPLETION & TEST DATA BY PRODUCING FORMATION

FORMATION	Oswego								
SPACING & SPACING ORDER NUMBER	70029 (unit)								
CLASS: Oil, Gas, Dry, Inj, Disp, Comm Disp, Svc	Oil								
PERFORATED INTERVALS	9680' - 14,673'								
ACID/VOLUME	2222 bbl 7.5% hcl	3908 bbl 3% hcl							
FRACTURE TREATMENT (Fluids/Prop Amounts)	787,880# 100 mesh Sand	134,068 BBL water							
	171,950# 40/70 mesh Sand								
	46,680# 20/40 mesh Sand								

Min Gas Allowable (165:10-17-7)

Gas Purchaser/Measurer

Enable

OR

First Sales Date

Oil Allowable (165:10-13-3)

INITIAL TEST DATA

INITIAL TEST DATE	8/29/2019								
OIL-BBL/DAY	36								
OIL-GRAVITY ( API)	43								
GAS-MCF/DAY	0								
GAS-OIL RATIO CU FT/BBL	0								
WATER-BBL/DAY	143								
PUMPING OR FLOWING	Pumping								
INITIAL SHUT-IN PRESSURE	0								
CHOKE SIZE	Open								
FLOW TUBING PRESSURE									

AS SUBMITTED

A record of the formations drilled through, and pertinent remarks are presented on the reverse. I declare that I have knowledge of the contents of this report and am authorized by my organization to make this report, which was prepared by me or under my supervision and direction, with the data and facts stated herein to be true, correct, and complete to the best of my knowledge and belief.

SIGNATURE	Kody Ewing	DATE	10/17/2019	PHONE NUMBER	405-286-9800
ADDRESS	1601 NW Expressway, Suite 777	CITY	OKC	STATE	OK
		ZIP	73118	EMAIL ADDRESS	kody.ewing@blakeproduction.com

PLEASE TYPE OR USE BLACK INK ONLY  
FORMATION RECORD

Give formation names and tops, if available, or descriptions and thickness of formations drilled through. Show intervals cored or drillstem tested.

NAMES OF FORMATIONS	TOP
Cottage Grove	8,192
Hogshooter	8,550
Checkerboard	8812
Cleveland	8,897
Big Lime	9,262
Oswego	9,365

LEASE NAME Putnam Oswego Unit WELL NO. 1-34H

FOR COMMISSION USE ONLY	
ITD on file <input type="checkbox"/> YES <input type="checkbox"/> NO	
APPROVED _____	DISAPPROVED _____
2) Reject Codes	
_____	
_____	
_____	
_____	

Were open hole logs run?	_____ yes <input checked="" type="checkbox"/> no
Date Last log was run	_____
Was CO <sub>2</sub> encountered?	_____ yes <input checked="" type="checkbox"/> no at what depths? _____
Was H <sub>2</sub> S encountered?	_____ yes <input checked="" type="checkbox"/> no at what depths? _____
Were unusual drilling circumstances encountered?	_____ yes <input checked="" type="checkbox"/> no
If yes, briefly explain below	

Other remarks: \_\_\_\_\_

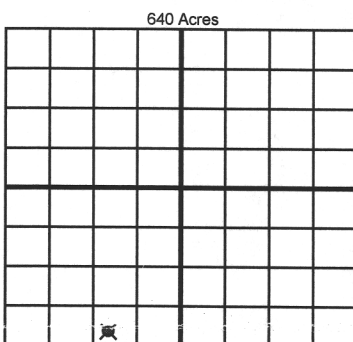
\_\_\_\_\_

\_\_\_\_\_

\_\_\_\_\_

\_\_\_\_\_

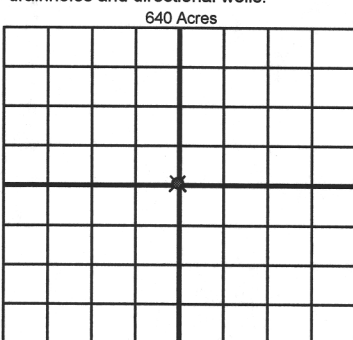
\_\_\_\_\_



If more than three drainholes are proposed, attach a separate sheet indicating the necessary information.

Direction must be stated in degrees azimuth. Please note, the horizontal drainhole and its end point must be located within the boundaries of the lease or spacing unit.

Directional surveys are required for all drainholes and directional wells.



BOTTOM HOLE LOCATION FOR DIRECTIONAL HOLE

SEC	TWP	RGE	COUNTY
Spot Location	1/4	1/4	1/4
Measured Total Depth	True Vertical Depth	BHL From Lease, Unit, or Property Line:	

BOTTOM HOLE LOCATION FOR HORIZONTAL HOLE: (LATERALS)

LATERAL #1			
SEC	TWP	RGE	COUNTY
35	16N	15W	Dewey
Spot Location	SW 1/4	SW 1/4	SE 1/4
Depth of Deviation	9,025	Radius of Turn	412
Measured Total Depth	14,735	True Vertical Depth	9,435
Direction		135	Total Length
BHL From Lease, Unit, or Property Line:		151	FWL

LATERAL #2			
SEC	TWP	RGE	COUNTY
Spot Location	1/4	1/4	1/4
Depth of Deviation	Radius of Turn	Direction	Total Length
Measured Total Depth	True Vertical Depth	BHL From Lease, Unit, or Property Line:	

LATERAL #3			
SEC	TWP	RGE	COUNTY
Spot Location	1/4	1/4	1/4
Depth of Deviation	Radius of Turn	Direction	Total Length
Measured Total Depth	True Vertical Depth	BHL From Lease, Unit, or Property Line:	