

Oklahoma Corporation Commission
Oil & Gas Conservation Division
Post Office Box 52000
Oklahoma City, Oklahoma 73152-2000
Rule 165: 10-3-25

Form 1002A

API No.: 35011240010000

Completion Report

Spud Date: July 09, 2018

OTC Prod. Unit No.:

Drilling Finished Date: July 09, 2018

1st Prod Date:

Completion Date: December 10, 2021

Drill Type: STRAIGHT HOLE

Well Name: BLACKBIRD 2-14H

Purchaser/Measurer:

Location: BLAINE 11 16N 11W
SE SE SW SW
234 FSL 1285 FWL of 1/4 SEC
Latitude: 35.870677056 Longitude: -98.343943599
Derrick Elevation: 1601 Ground Elevation: 1578

First Sales Date:

Operator: BRICKTOWN ENERGY LLC 24520

3030 NW EXPRESSWAY STE 900
OKLAHOMA CITY, OK 73112-5468

Completion Type		Location Exception		Increased Density	
	Single Zone	Order No		Order No	
	Multiple Zone	There are no Location Exception records to display.		There are no Increased Density records to display.	
	Commingled				

Casing and Cement							
Type	Size	Weight	Grade	Feet	PSI	SAX	Top of CMT
CONDUCTOR	20			0			SURFACE
SURFACE	13.375			1485	870		SURFACE

Liner								
Type	Size	Weight	Grade	Length	PSI	SAX	Top Depth	Bottom Depth
There are no Liner records to display.								

Total Depth: 1485

Packer		Plug	
Depth	Brand & Type	Depth	Plug Type
There are no Packer records to display.		There are no Plug records to display.	

Initial Test Data										
Test Date	Formation	Oil BBL/Day	Oil-Gravity (API)	Gas MCF/Day	Gas-Oil Ratio Cu FT/BBL	Water BBL/Day	Pumpin or Flowing	Initial Shut-In Pressure	Choke Size	Flow Tubing Pressure
There are no Initial Data records to display.										

Completion and Test Data by Producing Formation		
Formation Name: NONE	Code: 999NONE	Class: PLUG AND ABANDON

Formation	Top
-----------	-----

Were open hole logs run? No
Date last log run:

Were unusual drilling circumstances encountered? No
Explanation:

Other Remarks
SURFACE WAS DRILLED AND SET BY ECHO E & P (23925) IN 2018. BRICKTOWN ENERGY (24520) TOOK OVER OPERATIONS IN OCTOBER, 2020. DRILLING NEVER FINISHED BY ECHO E & P. BRICKTOWN ENERGY PLUGGED SURFACE HOLE DECEMBER, 2021.

FOR COMMISSION USE ONLY	
Status: Accepted	1147486

RECEIVED

Form 1002A
Rev. 2021

JAN 26 2022

API NO. 35-011-24001
OTC PROD. UNIT NO.Oil and Gas Conservation Division
P.O. Box 52000
Oklahoma City, OK 73152-2000
405-521-2331
OCCentralProcessing@OCC.OK.GOVOKLAHOMA
Corporation
Commission

Rule 165:10-3-25

OKLAHOMA CORPORATION
COMMISSION☒ ORIGINAL
☐ AMENDED (Reason)

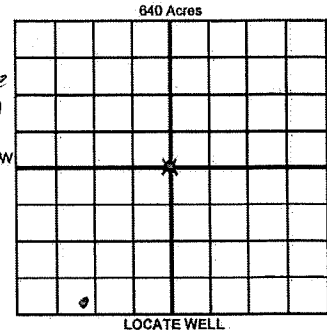
COMPLETION REPORT

TYPE OF DRILLING OPERATION

☒ STRAIGHT HOLE ☐ DIRECTIONAL HOLE ☐ HORIZONTAL HOLE
☐ SERVICE WELL

If directional or horizontal, see reverse for bottom hole location.

COUNTY	Blaine	SEC.	11	TWP	16N	RGE	11W	SPUD DATE	7/9/2018
LEASE NAME	Blackbird			WELL NO.	2-14H			DRLG FINISHED DATE	7/9/2018
SE 1/4	SE 1/4	SW 1/4	SW 1/4	FSL	234	FWL	1285	DATE OF WELL COMPLETION	12-10-2021
ELEVATION	1601	Ground	1576	Latitude	35.870677056°N			1st PROD DATE	
Operator	BRICKTOWN ENERGY			OTC / OCC	24520			RECOMP DATE	
NAME				Operator No.					
ADDRESS	3030 NW Expressway #900								
CITY	OKC			STATE	OK			ZIP	73112-5468



COMPLETION TYPE

<input checked="" type="checkbox"/> SINGLE ZONE	
<input type="checkbox"/> MULTIPLE ZONE	
<input type="checkbox"/> Application Date	
<input type="checkbox"/> COMMINGLED	
<input type="checkbox"/> Application Date	
LOCATION EXCEPTION ORDER NO.	
MULTIUNIT ORDER NO.	
INCREASED DENSITY ORDER NO.	

CASING & CEMENT (Attach Form 1002C)

TYPE	SIZE	WEIGHT	GRADE	FEET	PSI	SAX	TOP OF CMT
CONDUCTOR	20						Surface
SURFACE	13.375	NA	NA	1485	870		Surface
INTERMEDIATE							
PRODUCTION							
LINER							

PACKER @ _____ BRAND & TYPE _____ PLUG @ _____ TYPE _____ PLUG @ _____ TYPE _____ TOTAL DEPTH 1485

PACKER @ _____ BRAND & TYPE _____ PLUG @ _____ TYPE _____ PLUG @ _____ TYPE _____

COMPLETION & TEST DATA BY PRODUCING FORMATION

FORMATION						
SPACING & SPACING ORDER NUMBER	673566					
CLASS: Oil, Gas, Dry, Inj, Disp, Comm Disp, Svc	Dry PTA					
PERFORATED INTERVALS	None					
ACID/VOLUME						
FRACTURE TREATMENT (Fluids/Prop Amounts)	None					

Min Gas Allowable (165:10-17-7)

OR
Oil Allowable (165:10-13-3)Purchaser/Measurer
First Sales Date

INITIAL TEST DATA

INITIAL TEST DATE	NA				
OIL-BBL/DAY					
OIL-GRAVITY (API)					
GAS-MCF/DAY					
GAS-OIL RATIO CU FT/BBL					
WATER-BBL/DAY					
PUMPING OR FLOWING					
INITIAL SHUT-IN PRESSURE					
CHOKE SIZE					
FLOW TUBING PRESSURE					

A record of the formations drilled through, and pertinent remarks are presented on the reverse. I declare that I have knowledge of the contents of this report and am authorized by my organization to make this report, which was prepared by me or under my supervision and direction, with the data and facts stated herein to be true, correct, and complete to the best of my knowledge and belief.

SIGNATURE
3030 NW Expressway #900
ADDRESS

OKC
CITY

Kevin R Fischer
NAME (PRINT OR TYPE)
OK OK 73112
STATE ZIP

1/26/2022 405-208-8667
DATE PHONE NUMBER
kfischer@rbluff.com
EMAIL ADDRESS

Give formation names and tops, if available, or descriptions and thickness of formations drilled through. Show intervals cored or drillstem tested.

FOR COMMISSION USE ONLY	
ITD on file	<input type="checkbox"/> YES <input type="checkbox"/> NO
APPROVED	DISAPPROVED
2) Reject Codes	

Were open hole logs run? ☐ yes ☒ no

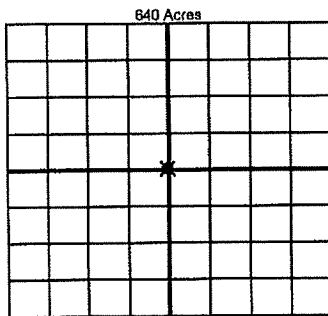
Date Last log was run _____

Was CO₂ encountered? ☐ yes ☒ no at what depths? _____

Was H₂S encountered? ☐ yes ☒ no at what depths? _____

Were unusual drilling circumstances encountered? ☐ yes ☒ no
If yes, briefly explain below _____

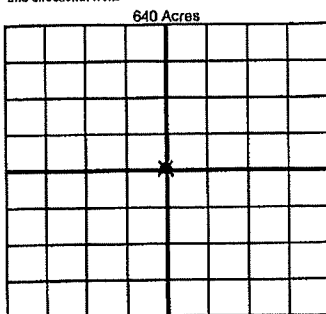
Other remarks: Surface was drilled and set by Echo E&P (23925) in 2018. Bricktown Energy (24520) took over operations in 10/2020. Drilling never finished by Echo E&P. Bricktown Energy plugged surface hole 12/2021.



If more than three drainholes are proposed, attach a separate sheet indicating the necessary information.

Direction must be stated in degrees azimuth.
Please note, the horizontal drainhole and its end
point must be located within the boundaries of the
lease or spacing unit.

Directional surveys are required for all drainholes and directional wells



SEC	TWP	RGE	COUNTY				
1/4		1/4	1/4	1/4	Feet From 1/4 Sec Lines		
Measured Total Depth		True Vertical Depth		BHL From Lease, Unit, or Property Line:			

LATERAL #1						
SEC	TWP	RGE	COUNTY			
1/4		1/4	1/4	1/4	Feet From 1/4 Sec Lines	
Depth of Deviation		Radius of Turn		Direction	Total Length	
Measured Total Depth		True Vertical Depth		BHL From Lease, Unit, or Property Line:		

LATERAL #2									
SEC	TWP	RGE	COUNTY						
1/4		1/4		1/4		1/4		Feet From 1/4 Sec Lines	
Depth of Deviation		Radius of Turn		Direction				Total Length	
Measured Total Depth		True Vertical Depth		BHL From Lease, Unit, or Property Line:					

LATERAL #3									
SEC	TWP	RGE	COUNTY						
1/4		1/4		1/4		1/4		Feet From 1/4 Sec Lines	
Depth of Deviation		Radius of Turn		Direction				Total Length	
Measured Total Depth		True Vertical Depth		BHL From Lease, Unit, or Property Line:					