

Oklahoma Corporation Commission
Oil & Gas Conservation Division
Post Office Box 52000
Oklahoma City, Oklahoma 73152-2000
Rule 165: 10-3-25

Form 1002A

API No.: 35045237630000

Completion Report

Spud Date: November 06, 2018

OTC Prod. Unit No.: 045-225640-0-0000

Drilling Finished Date: December 06, 2018

1st Prod Date: March 29, 2019

Completion Date: January 14, 2019

Drill Type: HORIZONTAL HOLE

Well Name: WEST HOG 30X31-19-25 1HB

Purchaser/Measurer: ENABLE

Location: ELLIS 30 19N 25W
NW NW NE NW
300 FNL 1600 FWL of 1/4 SEC
Latitude: 36.09973586 Longitude: -99.91125656
Derrick Elevation: 2453 Ground Elevation: 2432

First Sales Date: 3/29/19

Operator: FOURPOINT ENERGY LLC 23429

100 SAINT PAUL ST STE 400
DENVER, CO 80206-5140

Completion Type		Location Exception		Increased Density	
X	Single Zone	Order No		Order No	
	Multiple Zone	699330		682970	
	Commingled			682971	

Casing and Cement							
Type	Size	Weight	Grade	Feet	PSI	SAX	Top of CMT
SURFACE	13 3/8	54.5	J-55	828	2000	835	SURFACE
INTERMEDIATE	7	29	P-110	8414	1600	2085	SURFACE
PRODUCTION	4 1/2	13.5	HCP-110	19569	2300	1100	11301

Liner								
Type	Size	Weight	Grade	Length	PSI	SAX	Top Depth	Bottom Depth
There are no Liner records to display.								

Total Depth: 19584

Packer	
Depth	Brand & Type
There are no Packer records to display.	

Plug	
Depth	Plug Type
There are no Plug records to display.	

Initial Test Data

Test Date	Formation	Oil BBL/Day	Oil-Gravity (API)	Gas MCF/Day	Gas-Oil Ratio Cu FT/BBL	Water BBL/Day	Pumpin or Flowing	Initial Shut-In Pressure	Choke Size	Flow Tubing Pressure
May 26, 2019	CLEVELAND	235	47	524	2230	916	FLOWING	780	64/64	160

Completion and Test Data by Producing Formation

Formation Name: CLEVELAND

Code: 405CLVD

Class: GAS

Spacing Orders

Order No	Unit Size
161049	640
699329	MULTI UNIT

Perforated Intervals

From	To
9275	19391

Acid Volumes

279409 BBL TOTAL TREATED WATER+PUMPDOWN +ACID

Fracture Treatments

8722360 LBS OF COMMON WHITE 100 MESH SAND & 1604200 LBS OF PREMIUM WHITE 40/70 MESH SAND. 270488 BBLS WATER

Formation	Top
CLEVELAND	8715

Were open hole logs run? No

Date last log run:

Were unusual drilling circumstances encountered? No

Explanation:

Other Remarks

There are no Other Remarks.

Lateral Holes

Sec: 31 TWP: 19N RGE: 25W County: ELLIS

SE SE SE SW

38 FSL 2567 FWL of 1/4 SEC

Depth of Deviation: 8580 Radius of Turn: 447 Direction: 173 Total Length: 10302

Measured Total Depth: 19584 True Vertical Depth: 9184 End Pt. Location From Release, Unit or Property Line: 38

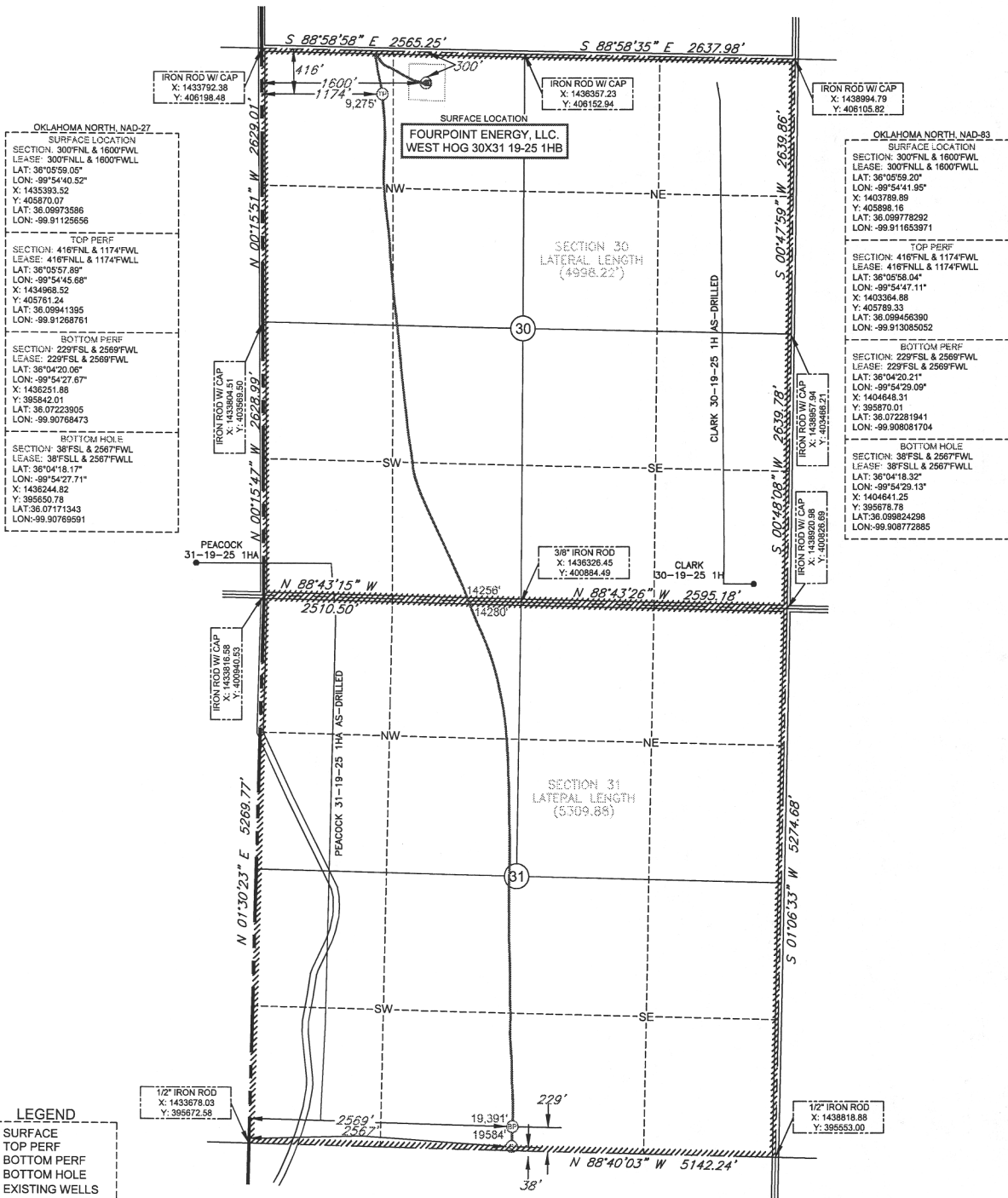
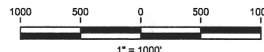
FOR COMMISSION USE ONLY

Status: Accepted

1142703

AS-DRILLED PLAT

COMPANY: FOURPOINT ENERGY, LLC. LEASE NAME: WEST HOG 30X31 19-25 1HB
 SECTION: 30 TOWNSHIP: T-19-N RANGE: R-25-W FOOTAGES: 300'FNL & 1600'FWL
 COUNTY: ELLIS STATE: OK
 LATITUDE: 36°05'59.05" LONGITUDE: -99°54'40.52" ELEVATION: 2432'GR
 DIRECTION: ±5 MILES SOUTHWEST OF ARNETT, OK
 TOPOGRAPHY & VEGETATION: PAD
 BEST ACCESSIBILITY: FROM EXISTING LEASE ROAD



- LEGEND**
- SURFACE
 - TOP PERF
 - BOTTOM PERF
 - BOTTOM HOLE
 - EXISTING WELLS
 - PROPOSED WELLS
 - ▤ LEASE LINE



FILE:	ORFS-8500-263
DATE:	4-18-19
SURVEYED BY:	B.A.
DRAWN BY:	K.Y.
CHECKED BY:	C.L.
REVISION:	
1	JKW FIX DRILL PATH

I, Codi Lamberson, HEREBY STATE THAT THE LOCATION PLAT SHOWN HEREON IS TRUE AND CORRECT TO THE BEST OF MY KNOWLEDGE AND BELIEF AS SURVEYED BY ME OR UNDER MY SUPERVISION.

Codi Lamberson
 April 30, 2019
 Codi Lamberson, P.L.S. 1963
 SURVEYED ON THE GROUND: MAY 7, 2018



NOTE:
 BEARINGS, DISTANCES & COORDINATES BASED ON OKLAHOMA STATE
 PLANE COORDINATE SYSTEM
 GPS OBSERVATION, OK NORTH ZONE, NAD-27
 GRID, US SURVEY FEET

BORE PATH INFORMATION PROVIDED BY FOURPOINT ENERGY, LLC.
 OPEN RANGE FIELD SERVICES HAS NOT PERFORMED A SURVEY ON THE GROUND



(CA-7824 LS 7/31/2018)
 1503 S. BARNES, PAMPA, TX 79065
 O: 806.665.0770
 39350 IH-10 WEST, BOERNE, TX 78006
 O: 830.816.5009