

Oklahoma Corporation Commission
Oil & Gas Conservation Division
Post Office Box 52000
Oklahoma City, Oklahoma 73152-2000
Rule 165: 10-3-25

Form 1002A

API No.: 35133253380001

Completion Report

Spud Date: April 12, 2019

OTC Prod. Unit No.:

Drilling Finished Date: April 21, 2019

1st Prod Date:

Completion Date: September 24, 2019

Drill Type: STRAIGHT HOLE

Well Name: HALLIE 1

Purchaser/Measurer:

Location: SEMINOLE 18 7N 8E
E2 SW NE SW
1650 FSL 1740 FWL of 1/4 SEC
Derrick Elevation: 0 Ground Elevation: 0

First Sales Date:

Operator: SAND POINT PRODUCTION INC 18650

5909 NW EXPRESSWAY STE 540
OKLAHOMA CITY, OK 73132-5154

Completion Type	
X	Single Zone
	Multiple Zone
	Commingled

Location Exception
Order No
There are no Location Exception records to display.

Increased Density
Order No
There are no Increased Density records to display.

Casing and Cement							
Type	Size	Weight	Grade	Feet	PSI	SAX	Top of CMT
SURFACE	8 5/8	24	J	326	1000	200	SURFACE
PRODUCTION	5 1/2	15.5	J	4430	1500	175	2865

Liner								
Type	Size	Weight	Grade	Length	PSI	SAX	Top Depth	Bottom Depth
There are no Liner records to display.								

Total Depth: 4433

Packer	
Depth	Brand & Type
There are no Packer records to display.	

Plug	
Depth	Plug Type
3320	CIBP
4250	CIBP

Initial Test Data

Test Date	Formation	Oil BBL/Day	Oil-Gravity (API)	Gas MCF/Day	Gas-Oil Ratio Cu FT/BBL	Water BBL/Day	Pumpin or Flowing	Initial Shut-In Pressure	Choke Size	Flow Tubing Pressure
May 28, 2019	1ST WILCOX					76	SWABBIN	20	N/A	
Sep 24, 2019	GILCREASE	1	34			182	PUMPING	30	N/A	

Completion and Test Data by Producing Formation

Formation Name: 1ST WILCOX

Code: 202WLCX1

Class: DRY

Spacing Orders

Order No	Unit Size
682304	80

Perforated Intervals

From	To
4375	4378

Acid Volumes

There are no Acid Volume records to display.

Fracture Treatments

NO

Formation Name: GILCREASE

Code: 403GLCR

Class: DRY

Spacing Orders

Order No	Unit Size
682304	80

Perforated Intervals

From	To
3204	3207

Acid Volumes

500 GALLONS

Fracture Treatments

NO

Formation	Top
SENORA LIME	1890
BROWN LIME	2460
BOOCH ABSENT	0
GILCREASE	3204
CROMWELL	3388
MAYES	3850
WOODFORD	3960
VIOLA	4164
1ST WILCOX	4270
2ND WILCOX	4350

Were open hole logs run? Yes

Date last log run: April 21, 2019

Were unusual drilling circumstances encountered? No

Explanation:

Other Remarks

OCC - SPACING ORDER NUMBER 682304 CREATED AN IRREGULAR 80 ACRE UNIT COMPRISING OF SE NW AND NE SW SEC 18-7N-8E.

FOR COMMISSION USE ONLY

1144225

API
NO. **133 25338**
OTC PROD.
UNIT NO.

(PLEASE TYPE OR USE BLACK INK ONLY)

OKLAHOMA CORPORATION COMMISSION
Oil & Gas Conservation Division
Post Office Box 52000
Oklahoma City, Oklahoma 73152-2000
Rule 165:10-3-25

RECEIVED

Form 1002A
Rev. 2009

OCT 22 2019

OKLAHOMA CORPORATION
COMMISSION

COMPLETION REPORT

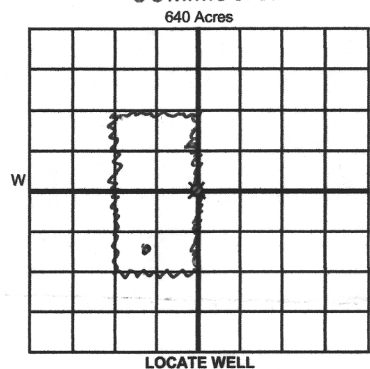
☒ ORIGINAL
☐ AMENDED (Reason)

TYPE OF DRILLING OPERATION

☒ STRAIGHT HOLE ☐ DIRECTIONAL HOLE ☐ HORIZONTAL HOLE
SERVICE WELL

If directional or horizontal, see reverse for bottom hole location.

COUNTY	SEMINOLE	SEC	18	TWP	1N	RGE	8E	SPUD DATE	4-12-19
LEASE NAME	Hallie			WELL NO.	1	DATE OF WELL COMPLETION	9-24-19	DRLG FINISHED DATE	4-21-19
ELEVATION	E/2 SW 1/4 NE 1/4 SW 1/4			FSL OF 1/4 SEC	1650	FWL OF 1/4 SEC	1740	1st PROD DATE	
Derrick FL	Ground			Latitude (if known)		Longitude (if known)		RECOMP DATE	
OPERATOR NAME	SAND POINT PRODUCTION, INC				OTC / OCC OPERATOR NO.	18650			
ADDRESS	5909 NW Expressway Suite 540								
CITY	Oklahoma City			STATE	OK	ZIP	73132		



COMPLETION TYPE

<input checked="" type="checkbox"/> SINGLE ZONE	
<input type="checkbox"/> MULTIPLE ZONE	
Application Date	
COMINGLED	
Application Date	
LOCATION EXCEPTION ORDER NO.	
INCREASED DENSITY ORDER NO.	

CASING & CEMENT (Attach Form 1002C)

TYPE	SIZE	WEIGHT	GRADE	FEET	PSI	SAX	TOP OF CMT
CONDUCTOR							
SURFACE	8-5/8	24	J	326	1000	200	surface
INTERMEDIATE							
PRODUCTION	5-1/2	15.5	J	4430	1500	175	2865
LINER							

PACKER @ _____ BRAND & TYPE _____ PLUG @ **3320** TYPE **CIBP** PLUG @ _____ TYPE _____
PACKER @ _____ BRAND & TYPE _____ PLUG @ **4250** TYPE **CIBP** PLUG @ _____ TYPE _____

TOTAL DEPTH **4433**

COMPLETION & TEST DATA BY PRODUCING FORMATION

FORMATION	1st Wilcox	Gilcrease				No Frac
SPACING & SPACING ORDER NUMBER	682304(80)	682304(80)				
CLASS: Oil, Gas, Dry, Inj, Disp, Comm Disp, Svc	Dry	Dry				
PERFORATED INTERVALS	4375-4378	3204-3207				
ACID/VOLUME	500 gal					
FRACTURE TREATMENT (Fluids/Prop Amounts)	No	No				

Min Gas Allowable (165:10-17-7)

Gas Purchaser/Measurer

OR

First Sales Date

Oil Allowable (165:10-13-3)

INITIAL TEST DATA

INITIAL TEST DATE	May 28, 2019	Sept 24, 2019			
OIL-BBL/DAY	0	1			
OIL-GRAVITY (API)	N/A	34			
GAS-MCF/DAY	0	0			
GAS-OIL RATIO CU FT/BBL	0	N/A			
WATER-BBL/DAY	76 BW/4HRS	182			
PUMPING OR FLOWING	Swabbing	Pumping			
INITIAL SHUT-IN PRESSURE	20 PSI	30 PSI			
CHOKE SIZE	N/A	N/A			
FLOW TUBING PRESSURE	N/A	None			

AS SUBMITTED

A record of the formations drilled through, and pertinent remarks are presented on the reverse. I declare that I have knowledge of the contents of this report and am authorized by my organization to make this report, which was prepared by me or under my supervision and direction, with the data and facts stated herein to be true, correct, and complete to the best of my knowledge and belief.

SIGNATURE **Ledlie Powell** NAME (PRINT OR TYPE)
5909 NW Expressway Okla City OK 73132 ADDRESS CITY STATE ZIP
9-24-19 DATE 728-2111 PHONE NUMBER
spci45@aol.com EMAIL ADDRESS

PLEASE TYPE OR USE BLACK INK ONLY
FORMATION RECORD

Give formation names and tops, if available, or descriptions and thickness of formations drilled through. Show intervals cored or drillstem tested.

LEASE NAME

HALLIE

WELL NO.

1

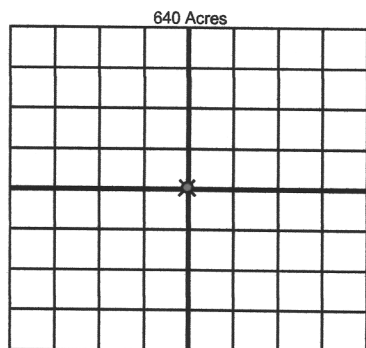
NAMES OF FORMATIONS	TOP
Senora Lime	1890
Brown Lime	2460
Boach absent	
Gilcrease	3204
Cromwell	3388
Mayes	3850
Woodford	3960
Viola	4164
1st Wilcox	4270
2nd Wilcox	4350

FOR COMMISSION USE ONLY	
ITD on file	<input type="checkbox"/> YES <input type="checkbox"/> NO
APPROVED	DISAPPROVED
2) Reject Codes	

Were open hole logs run?	<input checked="" type="checkbox"/> yes <input type="checkbox"/> no	Per Frank Hill 11-4-19
Date Last log was run	4-21-2019	
Was CO ₂ encountered?	<input type="checkbox"/> yes <input checked="" type="checkbox"/> no at what depths?	
Was H ₂ S encountered?	<input type="checkbox"/> yes <input checked="" type="checkbox"/> no at what depths?	
Were unusual drilling circumstances encountered?	<input type="checkbox"/> yes <input checked="" type="checkbox"/> no	
If yes, briefly explain below		

Other remarks:

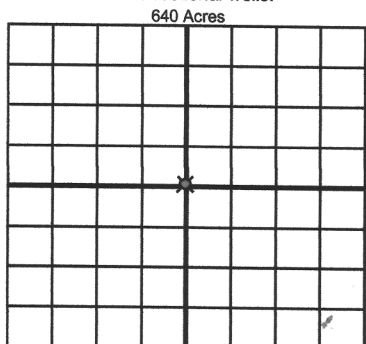
OCC- Spacing order 682304 created an irregular 80 acre unit comprising of SE NW and NESW sec 18-7N-8E



If more than three drainholes are proposed, attach a separate sheet indicating the necessary information.

Direction must be stated in degrees azimuth. Please note, the horizontal drainhole and its end point must be located within the boundaries of the lease or spacing unit.

Directional surveys are required for all drainholes and directional wells.



BOTTOM HOLE LOCATION FOR DIRECTIONAL HOLE

SEC	TWP	RGE	COUNTY
Spot Location			
1/4	1/4	1/4	1/4
Measured Total Depth		True Vertical Depth	BHL From Lease, Unit, or Property Line:

BOTTOM HOLE LOCATION FOR HORIZONTAL HOLE: (LATERALS)

LATERAL #1

SEC	TWP	RGE	COUNTY
Spot Location			
1/4	1/4	1/4	1/4
Depth of Deviation		Radius of Turn	Direction
Measured Total Depth		True Vertical Depth	BHL From Lease, Unit, or Property Line:

LATERAL #2

SEC	TWP	RGE	COUNTY
Spot Location			
1/4	1/4	1/4	1/4
Depth of Deviation		Radius of Turn	Direction
Measured Total Depth		True Vertical Depth	BHL From Lease, Unit, or Property Line:

LATERAL #3

SEC	TWP	RGE	COUNTY
Spot Location			
1/4	1/4	1/4	1/4
Depth of Deviation		Radius of Turn	Direction
Measured Total Depth		True Vertical Depth	BHL From Lease, Unit, or Property Line: