

Oklahoma Corporation Commission
Oil & Gas Conservation Division
Post Office Box 52000
Oklahoma City, Oklahoma 73152-2000
Rule 165: 10-3-25

Form 1002A

API No.: 35103247610000

Completion Report

Spud Date: October 21, 2019

OTC Prod. Unit No.: 103-226350-0-0000

Drilling Finished Date: October 29, 2019

1st Prod Date: November 24, 2019

Completion Date: November 18, 2019

Recomplete Date: January 07, 2020

Drill Type: STRAIGHT HOLE

Well Name: WOLLARD 3

Purchaser/Measurer:

Location: NOBLE 34 22N 2W
C SE SE
660 FSL 660 FEL of 1/4 SEC
Derrick Elevation: 1033 Ground Elevation: 1020

First Sales Date:

Operator: DAVIDSON ENERGY INC 17058
PO BOX 782
621 DELAWARE
PERRY, OK 73077-0782

Completion Type	
X	Single Zone
	Multiple Zone
	Commingled

Location Exception
Order No
There are no Location Exception records to display.

Increased Density
Order No
There are no Increased Density records to display.

Casing and Cement							
Type	Size	Weight	Grade	Feet	PSI	SAX	Top of CMT
SURFACE	8 5/8			399		260	SURFACE
PRODUCTION	5 1/2			4918		150	4119

Liner								
Type	Size	Weight	Grade	Length	PSI	SAX	Top Depth	Bottom Depth
There are no Liner records to display.								

Total Depth: 4919

Packer	
Depth	Brand & Type
There are no Packer records to display.	

Plug	
Depth	Plug Type
4760	CIBP

Initial Test Data

Test Date	Formation	Oil BBL/Day	Oil-Gravity (API)	Gas MCF/Day	Gas-Oil Ratio Cu FT/BBL	Water BBL/Day	Pumpin or Flowing	Initial Shut-In Pressure	Choke Size	Flow Tubing Pressure
Dec 15, 2019	MISSISSIPPI LIME	7	41	6	857	6	PUMPING			
Feb 09, 2020	SKINNER	187	41	197	1053		FLOWING	460	15/64	460

Completion and Test Data by Producing Formation

Formation Name: MISSISSIPPI LIME

Code: 351MSSLM

Class: OIL

Spacing Orders

Order No	Unit Size
700711	40

Perforated Intervals

From	To
4791	4821

Acid Volumes

1,000 GALLONS 15% NEFE

Fracture Treatments

1,000 BARRELS WATER, 238 BARRELS NEFE, 25,200 20/40 SAND
--

Formation Name: SKINNER

Code: 404SKNR

Class: OIL

Spacing Orders

Order No	Unit Size
700711	40

Perforated Intervals

From	To
4668	4676

Acid Volumes

10 GALLONS 15% NEFE

Fracture Treatments

500 BARRELS OIL, 500 GALLONS 7.5% MC, 18,600 20/40 SAND

Formation	Top
BIG LIME	4349
SKINNER	4668
MISSISSIPPI REEF	4782
MISSISSIPPI LIME	4803
WOODFORD	4920

Were open hole logs run? Yes

Date last log run: October 27, 2019

Were unusual drilling circumstances encountered? No

Explanation:

Other Remarks

There are no Other Remarks.

FOR COMMISSION USE ONLY

1145044

Status: Accepted

API NO. 103-24761
OTC PROD. 103-226350
UNIT NO.

(PLEASE TYPE OR USE BLACK INK ONLY)

OKLAHOMA CORPORATION COMMISSION
Oil & Gas Conservation Division
Post Office Box 52000
Oklahoma City, Oklahoma 73152-2000
Rule 165:10-3-25

Form 1002A
Rev. 2009

☒ ORIGINAL
☐ AMENDED (Reason)

COMPLETION REPORT

TYPE OF DRILLING OPERATION

☒ STRAIGHT HOLE ☐ DIRECTIONAL HOLE ☐ HORIZONTAL HOLE
☐ SERVICE WELL

If directional or horizontal, see reverse for bottom hole location.

COUNTY Noble SEC 34 TWP 22N RGE 02W

LEASE NAME Wollard

1/4 C 1/4 SE 1/4 SE 1/4 FSL OF 1/4 SEC 660 ENE OF 1/4 SEC 660

ELEVATION 1033 Ground 1020 Latitude (if known)

OPERATOR NAME Davidson Energy, Inc.

OTC / OCC OPERATOR NO. 17058

ADDRESS P.O. Box 782

CITY Perry STATE OK ZIP 73077

SPUD DATE 10/21/2019

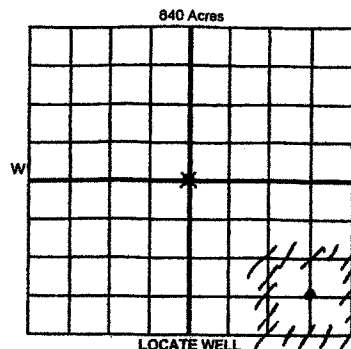
DRLG FINISHED DATE 10/29/2019

DATE OF WELL COMPLETION 11/18/19

1st PROD DATE 11/24/2019

RECOMP DATE 01/07/2020

Longitude (if known)



COMPLETION TYPE

☒ SINGLE ZONE
☐ MULTIPLE ZONE
Application Date
COMINGLED
Application Date
LOCATION EXCEPTION
ORDER NO.
INCREASED DENSITY
ORDER NO.

CASING & CEMENT (Attach Form 1002C)

TYPE	SIZE	WEIGHT	GRADE	FEET	PSI	SAX	TOP OF CMT
CONDUCTOR							
SURFACE	8 5/8			399		260	Surface
INTERMEDIATE							
PRODUCTION	5 1/2			4918		150	4119
LINER							

PACKER @ BRAND & TYPE PLUS @ 4760' TYPE CIBP PLUG @ TYPE
PACKER @ BRAND & TYPE PLUS @ TYPE PLUG @ TYPE

TOTAL DEPTH 4919

COMPLETION & TEST DATA BY PRODUCING FORMATION

FORMATION	Mississippi	Skinner				
SPACING & SPACING						
ORDER NUMBER	204902634	700711 (40)				
CLASS: Oil, Gas, Dry, Inj, Disp, Comm Disp, Svc	oil	oil				
	4791-4821	4668-4676				
PERFORATED INTERVALS						
ACID/VOLUME	1000g 15%NEFE	10g 15%NEFE				
FRACTURE TREATMENT (Fluids/Prop Amounts)	1000bbl water	500bbl oil				
	238 bbl NEFE	500g 7.5%MC				
	25,200 20/40 sand	18,600 20/40 sand				

☐ Min Gas Allowable (165:10-17-7)
OR
☐ Oil Allowable (165:10-13-3)

Gas Purchaser/Measurer
First Sales Date

INITIAL TEST DATA

INITIAL TEST DATE	12/15/2019	2/9/2020			
OIL-BBL/DAY	7	187			
OIL-GRAVITY (API)	41	41			
GAS-MCF/DAY	6	197			
GAS-OIL RATIO CU FT/BBL	857	1053			
WATER-BBL/DAY	6	0			
PUMPING OR FLOWING	pump	flow			
INITIAL SHUT-IN PRESSURE	0	460			
CHOKE SIZE	0	15/64			
FLOW TUBING PRESSURE	0	460			

A record of the formations drilled through, and pertinent remarks are presented on the reverse. I declare that I have knowledge of the contents of this report and am authorized by my organization to make this report, which was prepared by me or under my supervision and direction, with the data and facts stated herein to be true, correct, and complete to the best of my knowledge and belief.

Gerald W. Davidson
SIGNATURE

Gerald W. Davidson

4/7/2020 (580) 572-8137

P.O. Box 782

NAME (PRINT OR TYPE)

DATE PHONE NUMBER

ADDRESS

Perry OK 73077

Gerald@DavidsonEnergyInc.com

CITY STATE ZIP

EMAIL ADDRESS

PLEASE TYPE OR USE BLACK INK ONLY

FORMATION RECORD

Give formation names and tops, if available, or descriptions and thickness of formations drilled through. Show intervals cored or drillstem tested.

NAMES OF FORMATIONS	TOP
Big Lime	4,349
Skinner	4,668
Miss Reef	4782
Miss Lime	4,803
Woodford	4,920
TD	4,938

LEASE NAME Wollard WELL NO. 3

FOR COMMISSION USE ONLY	
ITD on file <input type="checkbox"/> YES <input type="checkbox"/> NO	
APPROVED _____	DISAPPROVED _____
2) Reject Codes	

Were open hole logs run? ☒ yes ☐ no

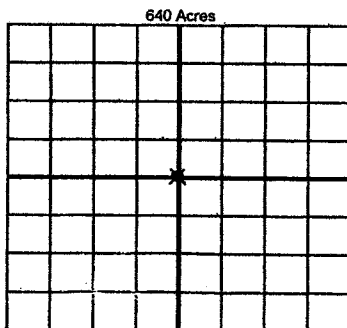
Date Last log was run 10/27/2009 2019

Was CO₂ encountered? ☐ yes ☒ no at what depths? _____

Was H₂S encountered? ☐ yes ☒ no at what depths? _____

Were unusual drilling circumstances encountered? ☐ yes ☒ no
If yes, briefly explain below _____

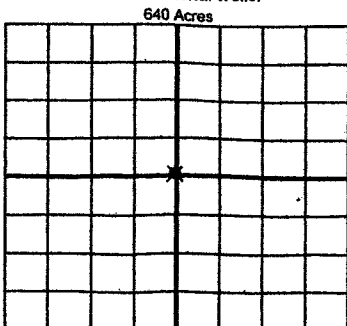
Other remarks: _____



If more than three drainholes are proposed, attach a separate sheet indicating the necessary information.

Direction must be stated in degrees azimuth. Please note, the horizontal drainhole and its end point must be located within the boundaries of the lease or spacing unit.

Directional surveys are required for all drainholes and directional wells.



BOTTOM HOLE LOCATION FOR DIRECTIONAL HOLE

SEC	TWP	RGE	COUNTY
Spot Location			
1/4	1/4	1/4	1/4
Measured Total Depth		True Vertical Depth	BHL From Lease, Unit, or Property Line:

BOTTOM HOLE LOCATION FOR HORIZONTAL HOLE: (LATERALS)

LATERAL #1

SEC	TWP	RGE	COUNTY
Spot Location			
1/4	1/4	1/4	1/4
Depth of Deviation		Radius of Turn	Direction
Measured Total Depth		True Vertical Depth	BHL From Lease, Unit, or Property Line:

LATERAL #2

SEC	TWP	RGE	COUNTY
Spot Location			
1/4	1/4	1/4	1/4
Depth of Deviation		Radius of Turn	Direction
Measured Total Depth		True Vertical Depth	BHL From Lease, Unit, or Property Line:

LATERAL #3

SEC	TWP	RGE	COUNTY
Spot Location			
1/4	1/4	1/4	1/4
Depth of Deviation		Radius of Turn	Direction
Measured Total Depth		True Vertical Depth	BHL From Lease, Unit, or Property Line: