

Oklahoma Corporation Commission
Oil & Gas Conservation Division
Post Office Box 52000
Oklahoma City, Oklahoma 73152-2000
Rule 165: 10-3-25

Form 1002A

API No.: 35071225970001

Completion Report

Spud Date: July 30, 1982

OTC Prod. Unit No.: 071-047262-0-0000

Drilling Finished Date: August 10, 1982

1st Prod Date: September 04, 1982

Amended

Completion Date: August 25, 1982

Amend Reason: RECOMPLETION

Recomplete Date: November 14, 2019

Drill Type: STRAIGHT HOLE

Well Name: ROSA IRBY (IRBY 3) 3

Purchaser/Measurer:

Location: KAY 29 25N 1W
C E2 SE SE
660 FSL 2310 FWL of 1/4 SEC
Latitude: 36.61009 Longitude: -97.31956
Derrick Elevation: 0 Ground Elevation: 957

First Sales Date:

Operator: KODA OPERATING LLC 24242

4870 S LEWIS AVE STE 240
TULSA, OK 74105-5153

Completion Type	
X	Single Zone
	Multiple Zone
	Commingled

Location Exception
Order No
There are no Location Exception records to display.

Increased Density
Order No
There are no Increased Density records to display.

Casing and Cement							
Type	Size	Weight	Grade	Feet	PSI	SAX	Top of CMT
SURFACE	8 5/8	23		403		225	SURFACE
PRODUCTION	4 1/2	10.5	K-55	4504		390	2876

Liner								
Type	Size	Weight	Grade	Length	PSI	SAX	Top Depth	Bottom Depth
There are no Liner records to display.								

Total Depth: 4500

Packer	
Depth	Brand & Type
There are no Packer records to display.	

Plug	
Depth	Plug Type
3900	CIBP

Initial Test Data

Test Date	Formation	Oil BBL/Day	Oil-Gravity (API)	Gas MCF/Day	Gas-Oil Ratio Cu FT/BBL	Water BBL/Day	Pumpin or Flowing	Initial Shut- In Pressure	Choke Size	Flow Tubing Pressure
Nov 16, 2019	LAYTON	21	40.5	40	1900	1730	PUMPING			

Completion and Test Data by Producing Formation									
Formation Name: LAYTON				Code: 405LYTN			Class: OIL		
Spacing Orders				Perforated Intervals					
Order No		Unit Size		From			To		
33558		40		3202			3292		
Acid Volumes				Fracture Treatments					
2,000 GALLONS 15% ACID				48,000 20/40 AND 16/20 SAND, 910 BARRELS					

Formation	Top
LAYTON	3232

Were open hole logs run? Yes

Date last log run: August 09, 1982

Were unusual drilling circumstances encountered? No

Explanation:

Other Remarks
There are no Other Remarks.

FOR COMMISSION USE ONLY	
Status: Accepted	1144311

API NO. 071-22597
OTC PROD. UNIT NO. 071-047262

(PLEASE TYPE OR USE BLACK INK ONLY)

OKLAHOMA CORPORATION COMMISSION
Oil & Gas Conservation Division
Post Office Box 52000
Oklahoma City, Oklahoma 73152-2000
Rule 165:10-3-25

RECEIVED

Form 1002A
Rev. 2009

DEC 05 2019

OKLAHOMA CORPORATION COMMISSION

ORIGINAL
☒ AMENDED (Reason)

RE-COMPLETION

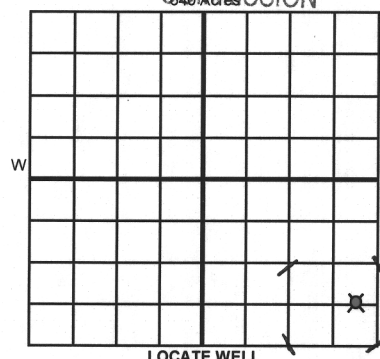
COMPLETION REPORT

TYPE OF DRILLING OPERATION

☒ STRAIGHT HOLE ☐ DIRECTIONAL HOLE ☐ HORIZONTAL HOLE
☐ SERVICE WELL

If directional or horizontal, see reverse for bottom hole location.

COUNTY	KAY	SEC	29	TWP	25N	RGE	1W	SPUD DATE	7/30/1982
LEASE NAME	ROSA IRBY							DRLG FINISHED DATE	8/10/1982
C	1/4	E2	1/4	SE	1/4	SE	1/4	DATE OF WELL COMPLETION	8/25/1982
FSL OF 1/4 SEC	660			FWL OF 1/4 SEC	2310			1st PROD DATE	9/4/1982
ELEVATION Derrick FL	Ground	957	Latitude (if known)	36.61009			Longitude (if known)	-97.31956	
OPERATOR NAME	KODA OPERATING, LLC							OTC / OCC OPERATOR NO.	24242
ADDRESS	4870 S LEWIS AVE, STE 240								
CITY	TULSA			STATE	OK		ZIP	74105	



COMPLETION TYPE

<input checked="" type="checkbox"/> SINGLE ZONE	
<input type="checkbox"/> MULTIPLE ZONE	
Application Date	
COMINGLED	
Application Date	
LOCATION EXCEPTION ORDER NO.	
INCREASED DENSITY ORDER NO.	

CASING & CEMENT (Attach Form 1002C)

TYPE	SIZE	WEIGHT	GRADE	FEET	PSI	SAX	TOP OF CMT
CONDUCTOR							
SURFACE	8 5/8	23#		403		225	SURFACE
INTERMEDIATE							
PRODUCTION	4 1/2	10.5#	K-55	4504		390	2876
LINER							

PACKER @ _____ BRAND & TYPE _____ PLUG @ 3900 TYPE CIBP PLUG @ _____ TYPE _____
PACKER @ _____ BRAND & TYPE _____ PLUG @ _____ TYPE _____ PLUG @ _____ TYPE _____

TOTAL DEPTH 4,500

COMPLETION & TEST DATA BY PRODUCING FORMATION

405L47TN

FORMATION	LAYTON						
SPACING & SPACING ORDER NUMBER	33558 / 40 ACRE						
CLASS: Oil, Gas, Dry, Inj, Disp, Comm Disp, Svc	OIL						
	3202-3222						
PERFORATED INTERVALS	3228-3248						
	3267-3292						
ACID/VOLUME	2000 GAL 15% ACID						
	48,000 20/40 & 16/20 SAND						
FRACTURE TREATMENT (Fluids/Prop Amounts)	910 BBLS						

Monitor Report to Frac Focus

Min Gas Allowable (165:10-17-7)

Gas Purchaser/Measurer



OR

First Sales Date

INITIAL TEST DATA

Oil Allowable (165:10-13-3)

INITIAL TEST DATE	11/16/2019					
OIL-BBL/DAY	21					
OIL-GRAVITY (API)	40.5					
GAS-MCF/DAY	40					
GAS-OIL RATIO CU FT/BBL	1,900					
WATER-BBL/DAY	1,730					
PUMPING OR FLOWING	PUMPING					
INITIAL SHUT-IN PRESSURE						
CHOKE SIZE						
FLOW TUBING PRESSURE						

AS SUBMITTED

A record of the formations drilled through, and pertinent remarks are presented on the reverse. I declare that I have knowledge of the contents of this report and am authorized by my organization to make this report, which was prepared by me or under my supervision and direction, with the data and facts stated herein to be true, correct, and complete to the best of my knowledge and belief.

SIGNATURE	JOHN BROWN	DATE	12-2-19	PHONE NUMBER	918-492-0254
4870 S LEWIS AVE, STE 240	TULSA	OK	74105	JOHN@ORIONEXPLORATION.COM	
ADDRESS	CITY	STATE	ZIP	EMAIL ADDRESS	

PLEASE TYPE OR USE BLACK INK ONLY
FORMATION RECORD

Give formation names and tops, if available, or descriptions and thickness of formations drilled through. Show intervals cored or drillstem tested.

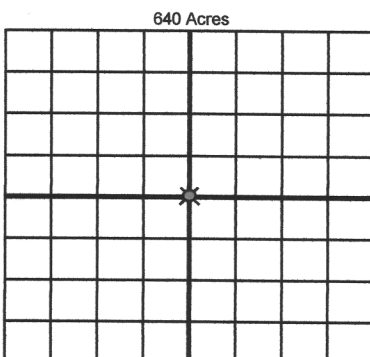
NAMES OF FORMATIONS	TOP
LAYTON	3,232

LEASE NAME ROSA IRBY WELL NO. 3

FOR COMMISSION USE ONLY	
ITD on file <input type="checkbox"/> YES <input type="checkbox"/> NO	
APPROVED _____	DISAPPROVED _____
2) Reject Codes	

Were open hole logs run?	<u>X</u> yes	no
Date Last log was run	<u>8/9/1982</u>	
Was CO ₂ encountered?	yes	no at what depths? _____
Was H ₂ S encountered?	yes	no at what depths? _____
Were unusual drilling circumstances encountered?	yes no	
If yes, briefly explain below		

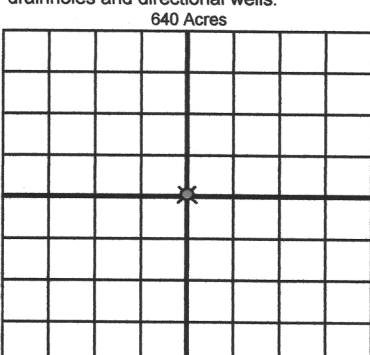
Other remarks:



If more than three drainholes are proposed, attach a separate sheet indicating the necessary information.

Direction must be stated in degrees azimuth. Please note, the horizontal drainhole and its end point must be located within the boundaries of the lease or spacing unit.

Directional surveys are required for all drainholes and directional wells.



BOTTOM HOLE LOCATION FOR DIRECTIONAL HOLE

SEC	TWP	RGE	COUNTY
Spot Location	1/4	1/4	1/4
Measured Total Depth	True Vertical Depth	Feet From 1/4 Sec Lines FSL _____ FWL _____	
BHL From Lease, Unit, or Property Line: _____			

BOTTOM HOLE LOCATION FOR HORIZONTAL HOLE: (LATERALS)

LATERAL #1

SEC	TWP	RGE	COUNTY
Spot Location	1/4	1/4	1/4
Depth of Deviation	Radius of Turn	Direction	Total Length
Measured Total Depth	True Vertical Depth	BHL From Lease, Unit, or Property Line: _____	

LATERAL #2

SEC	TWP	RGE	COUNTY
Spot Location	1/4	1/4	1/4
Depth of Deviation	Radius of Turn	Direction	Total Length
Measured Total Depth	True Vertical Depth	BHL From Lease, Unit, or Property Line: _____	

LATERAL #3

SEC	TWP	RGE	COUNTY
Spot Location	1/4	1/4	1/4
Depth of Deviation	Radius of Turn	Direction	Total Length
Measured Total Depth	True Vertical Depth	BHL From Lease, Unit, or Property Line: _____	