

Oklahoma Corporation Commission
Oil & Gas Conservation Division
Post Office Box 52000
Oklahoma City, Oklahoma 73152-2000
Rule 165: 10-3-25

Form 1002A

API No.: 35011239670000

Completion Report

Spud Date: February 17, 2019

OTC Prod. Unit No.:

Drilling Finished Date: March 12, 2019

1st Prod Date:

Completion Date: March 25, 2019

Drill Type: STRAIGHT HOLE

SERVICE WELL

Well Name: FAY SWD 1-31

Purchaser/Measurer:

Location: BLAINE 31 16N 13W
NE NE NW NW
2447 FSL 1041 FWL of 1/4 SEC
Derrick Elevation: 0 Ground Elevation: 1775

First Sales Date:

Operator: NUERA DISPOSALS LLC 24166
PO BOX 131
204 E MAIN ST
WEATHERFORD, OK 73096-0131

Completion Type		Location Exception		Increased Density	
	Single Zone	Order No		Order No	
	Multiple Zone	There are no Location Exception records to display.		There are no Increased Density records to display.	
	Commingled				

Casing and Cement							
Type	Size	Weight	Grade	Feet	PSI	SAX	Top of CMT
SURFACE	9 5/8	36		504		250	SURFACE
PRODUCTION	7	29	L-80	5663		1025	2950

Liner								
Type	Size	Weight	Grade	Length	PSI	SAX	Top Depth	Bottom Depth
There are no Liner records to display.								

Total Depth: 5696

Packer		Plug	
Depth	Brand & Type	Depth	Plug Type
2963	AS-1X	5623	CEMENT

Initial Test Data

Test Date	Formation	Oil BBL/Day	Oil-Gravity (API)	Gas MCF/Day	Gas-Oil Ratio Cu FT/BBL	Water BBL/Day	Pumpin or Flowing	Initial Shut- In Pressure	Choke Size	Flow Tubing Pressure
-----------	-----------	----------------	----------------------	----------------	----------------------------	------------------	----------------------	---------------------------------	---------------	-------------------------

There are no Initial Data records to display.

Completion and Test Data by Producing Formation

Formation Name: WOLFCAMPIAN

Code: 451WFMP

Class: COMM DISP

Spacing Orders		Perforated Intervals	
Order No	Unit Size	From	To
N/A		3624	4790

Acid Volumes		Fracture Treatments	
There are no Acid Volume records to display.		There are no Fracture Treatments records to display.	

Formation Name: VIRGILIAN

Code: 406VRGN

Class: COMM DISP

Spacing Orders		Perforated Intervals	
Order No	Unit Size	From	To
N/A		4790	5150

Acid Volumes		Fracture Treatments	
There are no Acid Volume records to display.		There are no Fracture Treatments records to display.	

Formation	Top
(BROWN DOLOMITE) TOP WOLFCAMPIAN	3610
VIRGILIAN	4790

Were open hole logs run? No

Date last log run: February 06, 2019

Were unusual drilling circumstances encountered? No

Explanation:

Other Remarks

PERMIT NUMBER 1810290005
FIRST BOND LOG TOP 3,245'
SQUEEZE 3,000' THROUGH PERFORATIONS
SECOND BOND LOG TOP 2,695'
TOP PERFORATIONS 3,624'

FOR COMMISSION USE ONLY

1142508

Status: Accepted

(PLEASE TYPE OR USE BLACK INK ONLY)

OKLAHOMA CORPORATION COMMISSION

Oil & Gas Conservation Division

Post Office Box 52000

Oklahoma City, Oklahoma 73152-2000

Rule 165:10-3-25

RECEIVED

Form 1002A

Rev. 2009

APR 05 2019 *Dr...*

Oklahoma Corporation
Commission

640 Acres

<input checked="" type="checkbox"/>	ORIGINAL
<input type="checkbox"/>	AMENDED (Reason)

COMPLETION REPORT

TYPE OF DRILLING OPERATION					SPUD DATE		2-17-19	
<input checked="" type="checkbox"/>	STRAIGHT HOLE		<input type="checkbox"/>	DIRECTIONAL HOLE		<input type="checkbox"/>	HORIZONTAL HOLE	
<input checked="" type="checkbox"/>	SERVICE WELL					DRLG FINISHED DATE		3-12-19
If directional or horizontal, see reverse for bottom hole location.								
COUNTY			Blaine		SEC	31	TWP	16N RGE 13W
LEASE NAME			Fay SWD			WELL NO.	31-Jan	1st PROD DATE
NE 1/4 NE 1/4 NW 1/4 NW 1/4			FSL OF 1/4 SEC		2447	FWL OF 1/4 SEC		1041
ELEVATION			Ground		1775	Latitude (if known)		Longitude (if known)
OPERATOR NAME			NuEra Disposals				OTC / OCC OPERATOR NO.	24166
ADDRESS								
204 E Main								
CITY			Weatherford			STATE	OK	ZIP 73096

A 10x10 grid with a vertical line labeled "345 ACRES" and a horizontal line labeled "W". An asterisk is at the intersection.

COMPLETION TYPE

	SINGLE ZONE	
	MULTIPLE ZONE Application Date	
	COMMINGLED Application Date	
LOCATION EXCEPTION ORDER NO.		
INCREASED DENSITY ORDER NO.		

CASING & CEMENT (Attach Form 1002C)

GRADING & CEMENT (Attach Form 1025)							
TYPE	SIZE	WEIGHT	GRADE	FEET	PSI	SAX	TOP OF CMT
CONDUCTOR							
SURFACE	9 5/8	36#		504		250	Surface
INTERMEDIATE							
PRODUCTION	7	29#	L80	5663		1025	2950
LINER							
PLUG @	5623	TYPE	Cem	PLUG @	TYPE	TOTAL DEPTH	5,696

PACKER @	<u>2,963</u>	BRAND & TYPE	<u>AS-1X</u>	PLUG @	<u>5623</u>	TYPE	<u>Cem</u>	PLUG @	_____	TYPE	_____
PACKER @	_____	BRAND & TYPE	_____	PLUG @	_____	TYPE	_____	PLUG @	_____	TYPE	_____

TOTAL DEPTH	5,696
-------------	-------

COMPLETION & TEST DATA BY PRODUCING FORMATION

FORMATION	Wolfcampian	Virgilian				
SPACING & SPACING	N/A	N/A				
ORDER NUMBER						
CLASS: Oil, Gas, Dry, Inj, Disp, Comm Disp, Svc	COMM DISP	COMM DISP				
PERFORATED INTERVALS						
	3624-4790	4790-5150				
ACID/VOLUME						
FRACTURE TREATMENT (Fluids/Prop Amounts)						

Min Gas Allowable (165:10-17-7)

Gas Purchaser/Measurer

INITIAL TEST DATA

INITIAL TEST DATE						
OIL-BBL/DAY						
OIL-GRAVITY (API)						
GAS-MCF/DAY						
GAS-OIL RATIO CU FT/BBL						
WATER-BBL/DAY						
PUMPING OR FLOWING						
INITIAL SHUT-IN PRESSURE						
CHOKE SIZE						
FLOW TUBING PRESSURE						

Justin Dudgeon

4/1/2019

(580) 530-1691

SIGNATURE

NAME (PRINT OR TYPE)

DATE _____

PHONE NUMBER

PLEASE TYPE OR USE BLACK INK ONLY

FORMATION RECORD

Give formation names and tops, if available, or descriptions and thickness of formations drilled through. Show intervals cored or drillstem tested.

NAMES OF FORMATIONS	TOP
(Brown Dolomite) <i>Top Wolfcampian</i>	3,610
Wolfcampian	4,370
Virgilian	4790

LEASE NAME Fay SWD WELL NO. 1-31

FOR COMMISSION USE ONLY	
ITD on file <input type="checkbox"/> YES <input type="checkbox"/> NO	
APPROVED _____	DISAPPROVED _____
2) Reject Codes	

Were open hole logs run? ☐ yes ☒ no

Date Last log was run 2/6/2019

Was CO₂ encountered? ☐ yes ☒ no at what depths? _____

Was H₂S encountered? ☐ yes ☒ no at what depths? _____

Were unusual drilling circumstances encountered? ☐ yes ☒ no
If yes, briefly explain below _____

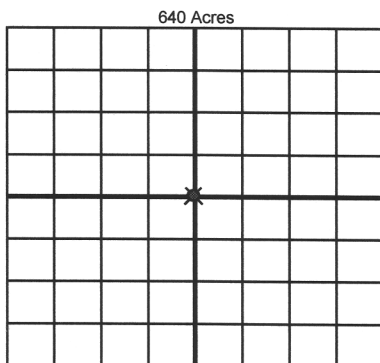
Other remarks: Permit 1810290005

First Bond Log Top 3245

Squeeze 3000 thru perfs

Second Bond- Top 2695

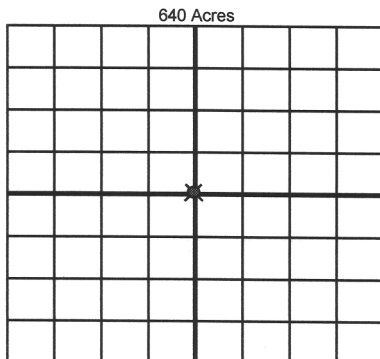
Top Perfs 3624



If more than three drainholes are proposed, attach a separate sheet indicating the necessary information.

Direction must be stated in degrees azimuth.
Please note, the horizontal drainhole and its end point must be located within the boundaries of the lease or spacing unit.

Directional surveys are required for all drainholes and directional wells.



BOTTOM HOLE LOCATION FOR DIRECTIONAL HOLE

SEC	TWP	RGE	COUNTY
Spot Location			
1/4	1/4	1/4	1/4
Measured Total Depth		True Vertical Depth	Feet From 1/4 Sec Lines FSL FWL
BHL From Lease, Unit, or Property Line:			

BOTTOM HOLE LOCATION FOR HORIZONTAL HOLE: (LATERALS)

LATERAL #1

SEC	TWP	RGE	COUNTY
Spot Location			
1/4	1/4	1/4	1/4
Depth of Deviation		Radius of Turn	Direction
Measured Total Depth		True Vertical Depth	Total Length
BHL From Lease, Unit, or Property Line:			

LATERAL #2

SEC	TWP	RGE	COUNTY
Spot Location			
1/4	1/4	1/4	1/4
Depth of Deviation		Radius of Turn	Direction
Measured Total Depth		True Vertical Depth	Total Length
BHL From Lease, Unit, or Property Line:			

LATERAL #3

SEC	TWP	RGE	COUNTY
Spot Location			
1/4	1/4	1/4	1/4
Depth of Deviation		Radius of Turn	Direction
Measured Total Depth		True Vertical Depth	Total Length
BHL From Lease, Unit, or Property Line:			