

Oklahoma Corporation Commission
Oil & Gas Conservation Division
Post Office Box 52000
Oklahoma City, Oklahoma 73152-2000
Rule 165: 10-3-25

Form 1002A

API No.: 35153236260000

Completion Report

Spud Date: September 07, 2018

OTC Prod. Unit No.: 153-224574

Drilling Finished Date: September 27, 2018

1st Prod Date: November 27, 2018

Completion Date: November 21, 2018

Drill Type: HORIZONTAL HOLE

Min Gas Allowable: Yes

Well Name: PATSY 13/12-20-17 3H

Purchaser/Measurer: PLAINS MARKETING

Location: WOODWARD 24 20N 17W
N2 N2 NE NW
200 FNL 1980 FWL of 1/4 SEC
Latitude: 36.20135851 Longitude: -98.966736379
Derrick Elevation: 1734 Ground Elevation: 1709

First Sales Date: 11/27/2018

Operator: TAPSTONE ENERGY LLC 23467

100 E MAIN ST
OKLAHOMA CITY, OK 73104-2509

Completion Type		Location Exception		Increased Density	
X	Single Zone	Order No		Order No	
	Multiple Zone	693453		676593	
	Commingled			676594	

Casing and Cement							
Type	Size	Weight	Grade	Feet	PSI	SAX	Top of CMT
SURFACE	13 3/8	48	H-40	460	850	450	SURFACE
INTERMEDIATE	9 5/8	36	J-55	1500	950	395	SURFACE
PRODUCTION	7	29	P-110	9372	1920	355	4629

Liner								
Type	Size	Weight	Grade	Length	PSI	SAX	Top Depth	Bottom Depth
LINER	4 1/2	13 1/2	P-110	8526	2500	795	8617	17143

Total Depth: 17143

Packer		Plug	
Depth	Brand & Type	Depth	Plug Type
9279	AS1-X	There are no Plug records to display.	

Initial Test Data

Test Date	Formation	Oil BBL/Day	Oil-Gravity (API)	Gas MCF/Day	Gas-Oil Ratio Cu FT/BBL	Water BBL/Day	Pumpin or Flowing	Initial Shut- In Pressure	Choke Size	Flow Tubing Pressure
Dec 07, 2018	MISS'AN LESS CHESTER/ MISSISSIPPIAN	254	35	1557	6129	1909	FLOWING	400	50/64	444

Completion and Test Data by Producing Formation									
Formation Name: MISSISSIPPIAN				Code: 359MSSP			Class: OIL		
Spacing Orders				Perforated Intervals					
Order No		Unit Size		From			To		
678935		MULTIUNIT		9511			14581		
661944		640							
Acid Volumes				Fracture Treatments					
720 BBL 7.5% HCL & 1,148 BBL 15% HCL				197,693 BBL OF FLUID & 6,887,553 LBS OF SAND.					

Formation Name: MISSISSIPPIAN (LESS CHESTER)		Code: 359MSNLC		Class: OIL	
Spacing Orders		Perforated Intervals			
Order No	Unit Size	From	To		
672107	640	14596	17053		
693452	MULTIUNIT				
Acid Volumes		Fracture Treatments			
FRAC'D WITH MISSISSIPPIAN FORMATION		FRAC'D WITH MISSISSIPPIAN FORMATION			

Formation Name: MISS'AN LESS CHESTER/ MISSISSIPPIAN				Code:				Class: OIL			

Formation	Top
BASE MANNING LIME	9068
MANNING SHALE	9143
UPPER MERAMEC	9204

Were open hole logs run? No
 Date last log run:
 Were unusual drilling circumstances encountered? No
 Explanation:

Other Remarks
There are no Other Remarks.

Lateral Holes

Sec: 12 TWP: 20N RGE: 17W County: WOODWARD

NW NE NE SW

2559 FSL 2049 FWL of 1/4 SEC

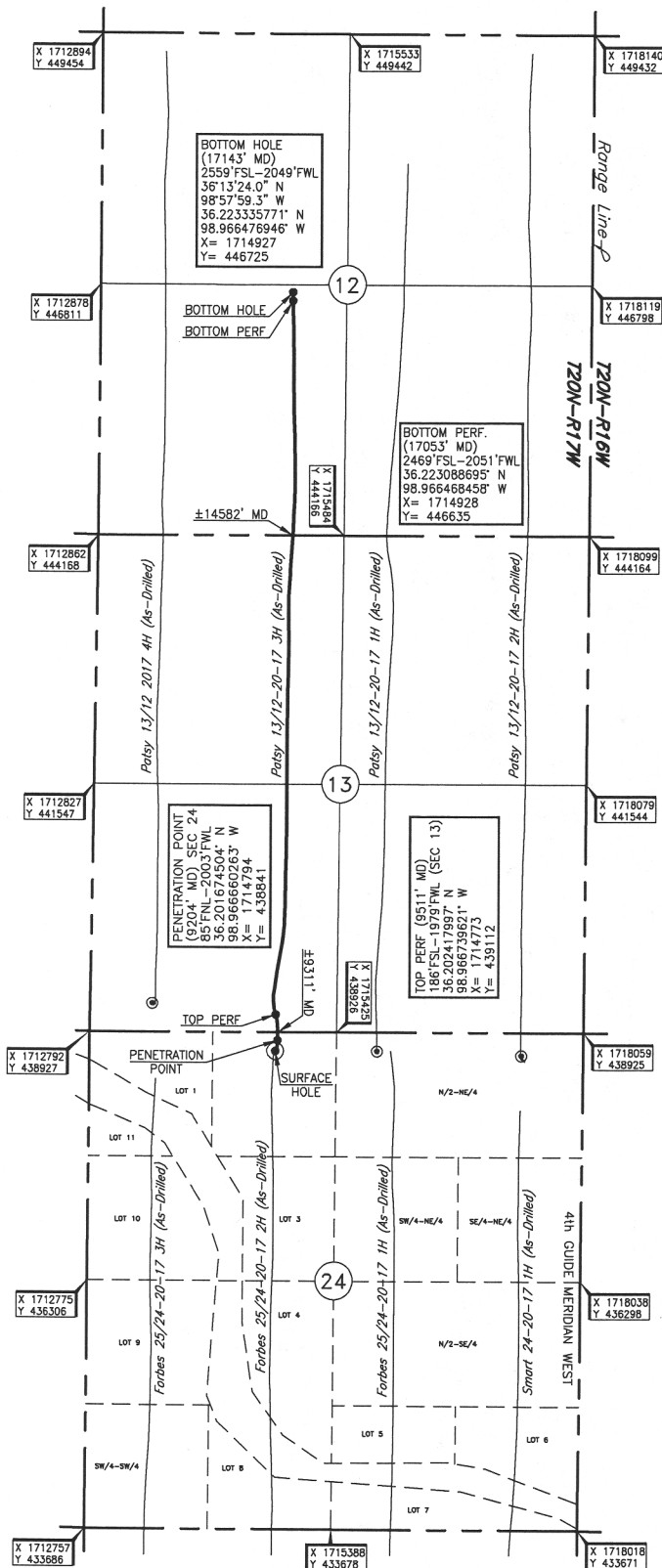
Depth of Deviation: 8844 Radius of Turn: 506 Direction: 359 Total Length: 7504

Measured Total Depth: 17143 True Vertical Depth: 9093 End Pt. Location From Release, Unit or Property Line: 2049

FOR COMMISSION USE ONLY	
Status: Accepted	1141741

13800 Wireless Way, Okla. City, OK. 73134 * LOCAL (405) 843-4847 * OUT OF STATE (800) 654-3219
Certificate of Authorization No. 1293 LS

County, Oklahoma



Operator: TAPSTONE ENERGY Well No.: 3H
 Lease Name: PATSY 13/12-20-17
 Topography & Vegetation Loc. fell in rolling sandy hill
 Good Drill Site? Yes Reference Stakes or Alternate Location
 Best Accessibility to Location From North off lease road Stakes Set None
 Distance & Direction From Richmond, OK, go ± 0.4 mi. East, then ± 3.0 mi. North, then ± 5.0 mi. East,
from Hwy Jct or Town
 then ± 2.0 mi. South to the NE Cor. of Sec 24-170N-R17W.

ELEVATION:

Well No.: 3H

Good Drill Site? Yes

Reference Stakes or Alternate Location
Stakes Set None

Distance & Direction

from Hwy Jct or Town From Richmond, OK, go ± 0.4 mi. East, then ± 3.0 mi. North, then ± 5.0 mi. East,

then ± 2.0 mi. South to the NE Cor. of Sec 24-T20N-R17W.

This information was gathered with a GPS receiver with ± 1 foot Horiz./Vert. accuracy.

DATUM: NAD-27
LAT: 36°12'04.9" N
LONG: 98°58'00.3" W
LAT: 36.201358510° N
LONG: 98.966736379° W
STATE PLANE
COORDINATES (US FEET):
ZONE: OK NORTH
X: 1714770
Y: 438726

Invoice # 304749 Date of Drawing: Oct. 11, 2018
291959 Date Staked: Apr. 12, 2018 JP

FINAL AS-DRILLED PLAT

AS-DRILLED INFORMATION
FURNISHED BY TAPSTONE ENERGY