

Oklahoma Corporation Commission
Oil & Gas Conservation Division
Post Office Box 52000
Oklahoma City, Oklahoma 73152-2000
Rule 165: 10-3-25

Form 1002A

API No.: 35083244480000

Completion Report

Spud Date: March 23, 2019

OTC Prod. Unit No.: 083-225666-0-0000

Drilling Finished Date: April 04, 2019

1st Prod Date: June 08, 2019

Completion Date: May 03, 2019

Drill Type: STRAIGHT HOLE

Well Name: STATE 3-16

Purchaser/Measurer:

Location: LOGAN 16 17N 4W
W2 NW NW SW
330 FNL 160 FWL of 1/4 SEC
Latitude: 35.9483 Longitude: -97.6395
Derrick Elevation: 1128 Ground Elevation: 1115

First Sales Date:

Operator: ARROWHEAD ENERGY INC 10239

2934 NW 156TH ST
EDMOND, OK 73013-2102

Completion Type		Location Exception		Increased Density	
	Single Zone		Order No		Order No
	Multiple Zone		695391		700260
X	Commingled				

Casing and Cement							
Type	Size	Weight	Grade	Feet	PSI	SAX	Top of CMT
CONDUCTOR	16			78		200	SURFACE
SURFACE	8 5/8	24	J-55	520		280	SURFACE
PRODUCTION	5 1/2	17	L-80	7022		280	5090

Liner								
Type	Size	Weight	Grade	Length	PSI	SAX	Top Depth	Bottom Depth
There are no Liner records to display.								

Total Depth: 7036

Packer	
Depth	Brand & Type
There are no Packer records to display.	

Plug	
Depth	Plug Type
There are no Plug records to display.	

Initial Test Data

Test Date	Formation	Oil BBL/Day	Oil-Gravity (API)	Gas MCF/Day	Gas-Oil Ratio Cu FT/BBL	Water BBL/Day	Pumpin or Flowing	Initial Shut-In Pressure	Choke Size	Flow Tubing Pressure						
Jul 27, 2019	HUNTON-WOODFORD-MISSISSIPPI LIME	100	38.5	100	1000	120	PUMPING									
Completion and Test Data by Producing Formation																
Formation Name: HUNTON			Code: 269HNTN			Class: OIL										
Spacing Orders				Perforated Intervals												
Order No		Unit Size		From			To									
62015		80		6880			6906									
Acid Volumes				Fracture Treatments												
There are no Acid Volume records to display.				26,082 BARRELS SLICK WATER, 320,250 POUNDS 30/50 SAND												
Formation Name: WOODFORD			Code: 319WDFD			Class: OIL										
Spacing Orders				Perforated Intervals												
Order No		Unit Size		From			To									
UNSPACED		160		6834			6844									
Acid Volumes				Fracture Treatments												
NONE				FRACED WITH HUNTON												
Formation Name: MISSISSIPPI LIME			Code: 351MSSLM			Class: OIL										
Spacing Orders				Perforated Intervals												
Order No		Unit Size		From			To									
57766		80		6238			6348									
62761		80		6370			6378									
				6406			6450									
				6480			6494									
				6506			6512									
				6542			6620									
				6650			6684									
				6684			6724									
Acid Volumes				Fracture Treatments												
NONE				FRACED WITH HUNTON												
Formation Name: HUNTON-WOODFORD-MISSISSIPPI LIME			Code:			Class: OIL										

Were open hole logs run? Yes

Formation	Top
LOVELL LIMESTONE	4352
TONKAWA SANDSTONE	4370
AVANT LIMESTONE	4620
PERRY SANDSTONE	4686
UPPER LAYTON SANDSTONE	5166
CHECKERBOARD LIMESTONE	5566
CLEVELAND SANDSTONE SECTION	5636
BIG LIME	5863
OSWEGO SERIES	5954
CHEROKEE MARKER	6036
VERDIGRIS LIMESTONE	6096
PINK LIMESTONE	6202
MISSISSIPPIAN LIMESTONE	6310
WOODFORD SHALE	6774
HUNTON LIMESTONE	6888
SYLVAN SHALE	6908
VIOLA LIMESTONE	7002

Date last log run: April 02, 2019

Were unusual drilling circumstances encountered? No

Explanation:

Other Remarks
EXCEPTION TO RULE 165:10-1-21 IN LOCATION EXCEPTION ORDER 695391.

FOR COMMISSION USE ONLY

1143858

Status: Accepted

API NO. 083 24448
OTC PROD. UNIT NO. 083-225666

(PLEASE TYPE OR USE BLACK INK ONLY)

OKLAHOMA CORPORATION COMMISSION

Oil & Gas Conservation Division

Post Office Box 52000

Oklahoma City, Oklahoma 73152-2000

Rule 165:10-3-25

RECEIVED

OCT 18 2019

OKLAHOMA CORPORATION COMMISSION

640 Acres

☒ ORIGINAL
☐ AMENDED (Reason)

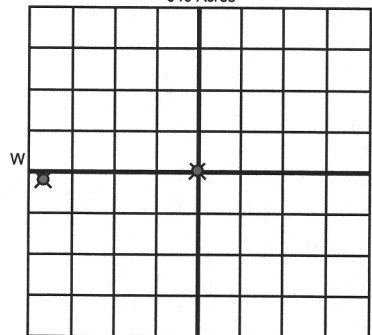
TYPE OF DRILLING OPERATION

☒ STRAIGHT HOLE ☐ DIRECTIONAL HOLE ☐ HORIZONTAL HOLE
☐ SERVICE WELL

If directional or horizontal, see reverse for bottom hole location.

COUNTY Logan SEC 16 TWP 17N RGE 04W
LEASE NAME State WELL NO. 3-16
W2 1/4 NW 1/4 NW 1/4 SW 1/4 1/4 SEC 2209 1/4 SEC 160
ELEVATION Ground Latitude (if known) Longitude (if known)
OPERATOR NAME Arrowhead Energy, Inc. OTC / OCC OPERATOR NO. 10239
ADDRESS 2934 NW 156th Street
CITY Edmond STATE OK ZIP 73013

SPUD DATE 3/23/2019
DRLG FINISHED DATE 4/4/2019
DATE OF WELL COMPLETION 5/03/2019
1st PROD DATE
RECOMP DATE



LOCATE WELL

COMPLETION TYPE

☐ SINGLE ZONE
☐ MULTIPLE ZONE
☒ COMMINGLED
LOCATION EXCEPTION ORDER NO. 695391
INCREASED DENSITY ORDER NO. 700260

CASING & CEMENT (Attach Form 1002C)

TYPE	SIZE	WEIGHT	GRADE	FEET	PSI	SAX	TOP OF CMT
CONDUCTOR	16			75			surface
SURFACE	8 5/8	24#	J55	520		280	surface
INTERMEDIATE							
PRODUCTION	5 1/2	17#	L80	7037		280	7022
LINER							

PACKER @ BRAND & TYPE PLUG @ TYPE PLUG @ TYPE
PACKER @ BRAND & TYPE PLUG @ TYPE PLUG @ TYPE
TOTAL DEPTH 7,036

COMPLETION & TEST DATA BY PRODUCING FORMATION

FORMATION	HUNTON	WOODFORD	Mississippi Lime		
SPACING & SPACING ORDER NUMBER	62015 (80)	Unspaced	57766, 62761 (80)		Maintain Report to FracFocus
CLASS: Oil, Gas, Dry, Inj, Disp, Comm Disp, Svc	Oil	Oil	Oil		
PERFORATED INTERVALS	6880-6906	6834-44	6238-6348, 6370-6378, 6406-6410, 6410-6450	6480-6494, 6506-6512, 6542-6580, 6580-6620, 6650-6684, 6684-6724	
ACID/VOLUME					
FRACTURE TREATMENT (Fluids/Prop Amounts)	26,082 bbls Slick Water				
	320,250 #30/50 sand				

Min Gas Allowable (165:10-17-7)

Gas Purchaser/Measurer

First Sales Date

INITIAL TEST DATA

INITIAL TEST DATE	7-27-19				
OIL-BBL/DAY	100				
OIL-GRAVITY (API)	38.5				
GAS-MCF/DAY	100				
GAS-OIL RATIO CU FT/BBL	1000				
WATER-BBL/DAY	120				
PUMPING OR FLOWING	Pumping				
INITIAL SHUT-IN PRESSURE	na				
CHOKE SIZE					
FLOW TUBING PRESSURE					

AS SUBMITTED

A record of the formations drilled through, and pertinent remarks are presented on the reverse. I declare that I have knowledge of the contents of this report and am authorized by my organization to make this report, which was prepared by me or under my supervision and direction, with the data and facts stated herein to be true, correct, and complete to the best of my knowledge and belief.

William F. Varner

William F Varner

10/19/19

405-848-5777

SIGNATURE

NAME (PRINT OR TYPE)

DATE

PHONE NUMBER

2934 NW 156th Street

Edmond

OK

73013

arrowhead@arrowheadenergy.com

ADDRESS

CITY

STATE

ZIP

EMAIL ADDRESS

PLEASE TYPE OR USE BLACK INK ONLY
FORMATION RECORD

Give formation names and tops, if available, or descriptions and thickness of formations drilled through. Show intervals cored or drillstem tested.

LEASE NAME _____

WELL NO. _____

NAMES OF FORMATIONS	TOP
Lovell Limestone	4,352
Tonkawa Sandstone	4,370
Avant Limestone	4,620
Perry Sandstone	4,686
Upper Layton Sandstone	5,166
Checkerboard Limestone	5,566
Cleveland Sandstone section	5,636
Big Lime	5,863
Oswego Series	5,954
Cherokee Marker	6,036
Verdigris Limstone	6,096
Pink Limestone	6,202
Mississippian Limestone	6,310
Woodford Shale	6,774
Hunton Limesone	6,888
Sylvan Shale	6,908

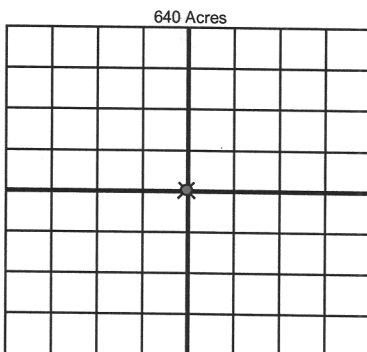
FOR COMMISSION USE ONLY	
ITD on file <input type="checkbox"/> YES <input type="checkbox"/> NO	
APPROVED _____	DISAPPROVED _____
2) Reject Codes	

Were open hole logs run?	<input checked="" type="checkbox"/> yes <input type="checkbox"/> no
Date Last log was run	_____
Was CO ₂ encountered?	_____ yes <input checked="" type="checkbox"/> no at what depths? _____
Was H ₂ S encountered?	_____ yes <input checked="" type="checkbox"/> no at what depths? _____
Were unusual drilling circumstances encountered?	_____ yes <input checked="" type="checkbox"/> no
If yes, briefly explain below	

Per the operator

Other remarks:

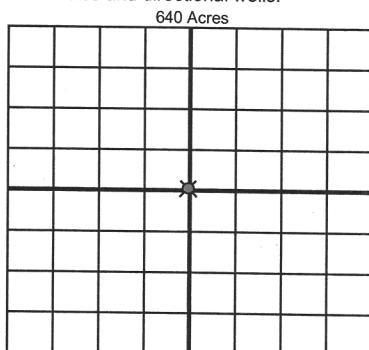
Viola Limestone 7,002', Total Depth 7,036'



If more than three drainholes are proposed, attach a separate sheet indicating the necessary information.

Direction must be stated in degrees azimuth.
Please note, the horizontal drainhole and its end point must be located within the boundaries of the lease or spacing unit.

Directional surveys are required for all drainholes and directional wells.



BOTTOM HOLE LOCATION FOR DIRECTIONAL HOLE

SEC	TWP	RGE	COUNTY
Spot Location			
1/4	1/4	1/4	1/4
Measured Total Depth		True Vertical Depth	Feet From 1/4 Sec Lines FSL _____ FWL _____
BHL From Lease, Unit, or Property Line: _____			

BOTTOM HOLE LOCATION FOR HORIZONTAL HOLE: (LATERALS)

LATERAL #1

SEC	TWP	RGE	COUNTY
Spot Location			
1/4	1/4	1/4	1/4
Depth of Deviation		Radius of Turn	Direction
Measured Total Depth		True Vertical Depth	Total Length
BHL From Lease, Unit, or Property Line: _____			

LATERAL #2

SEC	TWP	RGE	COUNTY
Spot Location			
1/4	1/4	1/4	1/4
Depth of Deviation		Radius of Turn	Direction
Measured Total Depth		True Vertical Depth	Total Length
BHL From Lease, Unit, or Property Line: _____			

LATERAL #3

SEC	TWP	RGE	COUNTY
Spot Location			
1/4	1/4	1/4	1/4
Depth of Deviation		Radius of Turn	Direction
Measured Total Depth		True Vertical Depth	Total Length
BHL From Lease, Unit, or Property Line: _____			