

Oklahoma Corporation Commission
Oil & Gas Conservation Division
Post Office Box 52000
Oklahoma City, Oklahoma 73152-2000
Rule 165: 10-3-25

Form 1002A

API No.: 35151245350000

Completion Report

Spud Date: August 01, 2018

OTC Prod. Unit No.: 151-224378

Drilling Finished Date: August 09, 2018

1st Prod Date: November 12, 2018

Completion Date: September 25, 2018

Drill Type: STRAIGHT HOLE

Min Gas Allowable: Yes

Well Name: CHESTER PAUL 27-1

Purchaser/Measurer: TARGA

Location: WOODS 27 29N 17W
NE SW NE NE
940 FNL 770 FEL of 1/4 SEC
Derrick Elevation: 1750 Ground Elevation: 1737

First Sales Date: 11/12/2018

Operator: REDLAND RESOURCES LLC 18774

6001 NW 23RD ST
OKLAHOMA CITY, OK 73127-1253

Completion Type	
X	Single Zone
	Multiple Zone
	Commingled

Location Exception
Order No
There are no Location Exception records to display.

Increased Density
Order No
679939

Casing and Cement							
Type	Size	Weight	Grade	Feet	PSI	SAX	Top of CMT
CONDUCTOR	20			60		6	SURFACE
SURFACE	13.375	48		475		400	SURFACE
PRODUCTION	4.5	10.50		5554		300	3650

Liner								
Type	Size	Weight	Grade	Length	PSI	SAX	Top Depth	Bottom Depth
There are no Liner records to display.								

Total Depth: 5555

Packer	
Depth	Brand & Type
There are no Packer records to display.	

Plug	
Depth	Plug Type
There are no Plug records to display.	

Initial Test Data

Test Date	Formation	Oil BBL/Day	Oil-Gravity (API)	Gas MCF/Day	Gas-Oil Ratio Cu FT/BBL	Water BBL/Day	Pumpin or Flowing	Initial Shut-In Pressure	Choke Size	Flow Tubing Pressure
Nov 26, 2018	MISSISSIPPIAN	35	28	60	1714	40	PUMPING	950		

Completion and Test Data by Producing Formation

Formation Name: MISSISSIPPIAN

Code: 359MSSP

Class: OIL

Spacing Orders

Order No	Unit Size
418581	640

Perforated Intervals

From	To
5250	5342

Acid Volumes

5,000 GALLONS 15% NE/FE HCL

Fracture Treatments

11,580 BARRELS SLICK WATER, 250,000 POUNDS 20/40 SAND

Formation	Top
CHASE	2350
TOP PENN	3297
BASE HEEBNER	4284
LANSING	4474
STARK SHALE	4934
CHEROKEE SHALE	5178
MISSISSIPPIAN	5250
BASE WARSAW	5344

Were open hole logs run? Yes

Date last log run: August 23, 2018

Were unusual drilling circumstances encountered? No

Explanation:

Other Remarks

There are no Other Remarks.

FOR COMMISSION USE ONLY

1141464

Status: Accepted

API 151-24535
NO.
OTC PRO 151-224378
UNIT NO.

(PLEASE TYPE OR USE BLACK INK ONLY)

OKLAHOMA CORPORATION COMMISSION

Oil & Gas Conservation Division

Post Office Box 52000

Oklahoma City, Oklahoma 73152-2000

Rule 165:10-3-25

COMPLETION REPORT

RECEIVED
DEC 11 2018
Oklahoma Corporation
Commission

Form 1002A

Rev. 2009

☒ ORIGINAL
☐ AMENDED (Reason) _____

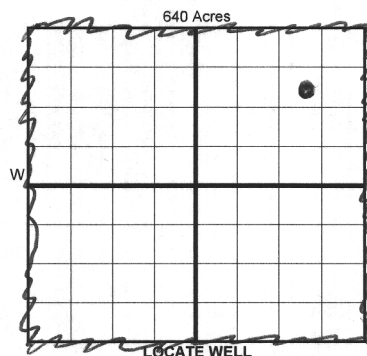
TYPE OF DRILLING OPERATION

☒ STRAIGHT HOLE ☐ DIRECTIONAL HOLE ☐ HORIZONTAL HOLE
☐ SERVICE WELL

If directional or horizontal, see reverse for bottom hole location.

COUNTY **WOODS** SEC **27** TWP **29N** RGE **17W**
LEASE **CHESTER PAUL** FNL **940** WELL NO. **27-1**
NE 1/4 SW 1/4 NE 1/4 NE 1/4 EST OF 1/4 SEC **1714** 1/4 SEC **1870** DATE OF WELL COMPLETION **9-25-18**
ELEVATION **1750** Ground **1737** Latitude (if known) **36°58'09.7"N** Longitude (if known) **99°00'57.1"W**
OPERATOR NAME **REDLAND RESOURCES, LLC** OTC/OCC OPERATOR NO. **18774**
ADDRESS **6001 N.W. 23RD**
CITY **OKLA. CITY** STATE **OKLA.** ZIP **73127**

SPUD DATE **8-01-18**
DRLG FINISHED DATE **8-09-18**
DATE OF WELL COMPLETION **9-25-18**
1st PROD DATE **11-12-18**
RECOMP DATE _____



COMPLETION TYPE

☒ SINGLE ZONE
☐ MULTIPLE ZONE
Application Date _____
☐ COMMINGLED
Application Date _____
LOCATION EXCEPTION
ORDER NO. _____
INCREASED DENSITY **679939**
ORDER NO. _____

CASING & CEMENT (Form 1002C must be attached)

TYPE	SIZE	WEIGHT	GRADE	FEET	PSI	SAX	TOP OF CMT
CONDUCTOR	20"			60		6 YDS	SURFACE
SURFACE	13.375	48#		475		400	SURFACE
INTERMEDIATE							
PRODUCTION	4.5	10.50		5554		300	3650
LINER							
						TOTAL DEPTH	5555

PACKER @ _____ BRAND & TYPE _____ PLUG @ _____ TYPE _____ PLUG @ _____ TYPE _____
PACKER @ _____ BRAND & TYPE _____ PLUG @ _____ TYPE _____ PLUG @ _____ TYPE _____

COMPLETION & TEST DATA BY PRODUCING FORMATION

FORMATION	MISSISSIPPIAN						
SPACING & SPACING ORDER NUMBER	640 418581						
CLASS: Oil, Gas, Dry, Inj, Disp, Comm Disp, Svc	OIL						
PERFORATED INTERVALS	5250-5342						
ACID/VOLUME	5000 GAL. 15% NE/FE HCL						
FRACTURE TREATMENT (Fluids/Prop Amounts)	11,580 BBL. SLICK WATER 250,000 LBS 20/40 SAND						

Reported to Frac Focus

☒ Min Gas Allowable (165:10-17-7) OR ☐ Oil Allowable (165:10-13-3)
Gas Purchaser/Measurer **TARGA**
First Sales Date **11-12-18**

INITIAL TEST DATA

INITIAL TEST DATE	11-26-18						
OIL-BBL/DAY	35						
OIL-GRAVITY (API)	28						
GAS-MCF/DAY	60,000						
GAS-OIL RATIO CU FT/BBL	1714 : 1						
WATER-BBL/DAY	40						
PUMPING OR FLOWING	PUMPING						
INITIAL SHUT-IN PRESSURE	950#						
CHOKE SIZE							
FLOW TUBING PRESSURE							

AS SUBMITTED

A record of the formations drilled through, and pertinent remarks are presented on the reverse. I declare that I have knowledge of the contents of this report and am authorized by my organization to make this report, which was prepared by me or under my supervision and direction, with the data and facts stated herein to be true, correct, and complete to the best of my knowledge and belief.

Leroy A. Buck **LEROY A. BUCK** **12-05-18** **405789-7104**
SIGNATURE NAME (PRINT OR TYPE) DATE PHONE NUMBER
6001 N.W. 23RD **OKLA. CITY** **OKLA. 73127** **redlab5841@gmail.com**
ADDRESS CITY STATE ZIP EMAIL ADDRESS

PLEASE TYPE OR USE BLACK INK ONLY
FORMATION RECORD

Give formation names and tops, if available, or descriptions and thickness of formations drilled through. Show intervals cored or drillstem tested.

NAMES OF FORMATIONS	TOP
CHASE	2350
TOP PENN	3297
BASE HEEBNER	4284
LANSING	4474
STARK SHALE	4934
CHEROKEE SHALE	5178
MISSISSIPPIAN	5250
BASE WARSAW	5344

LEASE NAME CHESTER PAUL

WELL NO. 27-1

FOR COMMISSION USE ONLY	
ITD on file <input type="checkbox"/> YES <input type="checkbox"/> NO	
APPROVED _____ DISAPPROVED _____	2) Reject Codes
<div></div> <div></div> <div></div> <div></div> <div></div>	

Were open hole logs run?	<u>X</u> yes <u> </u> no
Date Last log was run	<u>8-23-18</u> BOND LOG
Was CO ₂ encountered?	<u> </u> yes <u>X</u> no at what depths? _____
Was H ₂ S encountered?	<u> </u> yes <u>X</u> no at what depths? _____
Were unusual drilling circumstances encountered?	<u> </u> yes <u>X</u> no
If yes, briefly explain below	

Other remarks:

640 Acres

If more than three drainholes are proposed, attach a separate sheet indicating the necessary information.

Direction must be stated in degrees azimuth.
Please note, the horizontal drainhole and its end point must be located within the boundaries of the lease or spacing unit.

Directional surveys are required for all drainholes and directional wells.

640 Acres

BOTTOM HOLE LOCATION FOR DIRECTIONAL HOLE

SEC	TWP	RGE	COUNTY				
Spot Location				1/4	1/4	1/4	1/4
Measured Total Depth				True Vertical Depth		Feet From 1/4 Sec Lines FSL FWL	
BHL From Lease, Unit, or Property Line:							

BOTTOM HOLE LOCATION FOR HORIZONTAL HOLE: (LATERALS)

LATERAL #1							
SEC	TWP	RGE	COUNTY				
Spot Location				1/4	1/4	1/4	1/4
Depth of Deviation				Radius of Turn		Direction	
Measured Total Depth				True Vertical Depth		Total Length	
BHL From Lease, Unit, or Property Line:							

LATERAL #2							
SEC	TWP	RGE	COUNTY				
Spot Location				1/4	1/4	1/4	1/4
Depth of Deviation				Radius of Turn		Direction	
Measured Total Depth				True Vertical Depth		Total Length	
BHL From Lease, Unit, or Property Line:							

LATERAL #3							
SEC	TWP	RGE	COUNTY				
Spot Location				1/4	1/4	1/4	1/4
Depth of Deviation				Radius of Turn		Direction	
Measured Total Depth				True Vertical Depth		Total Length	
BHL From Lease, Unit, or Property Line:							