

Oklahoma Corporation Commission
Oil & Gas Conservation Division
Post Office Box 52000
Oklahoma City, Oklahoma 73152-2000
Rule 165: 10-3-25

Form 1002A

API No.: 35019263150002

Completion Report

Spud Date: February 10, 2019

OTC Prod. Unit No.: 019-227393-0-0000

Drilling Finished Date: February 14, 2020

1st Prod Date: October 06, 2021

Amended

Completion Date: October 06, 2021

Amend Reason: INITIAL COMPLETION, CORRECT PRODUCTION CASING DEPTH, AND
LATERAL DETAILS

Drill Type: HORIZONTAL HOLE

Min Gas Allowable: Yes

Well Name: NAYLOR 3-11H2X35

Purchaser/Measurer: TARGA PIPELINE MID-
CONTINENT LLC

First Sales Date: 10/06/2021

Location: CARTER 11 4S 2E
SE NW NW NE
559 FNL 2300 FEL of 1/4 SEC
Latitude: 34.229156 Longitude: -97.06306
Derrick Elevation: 802 Ground Elevation: 777

Operator: XTO ENERGY INC 21003

22777 SPRINGWOODS VILLAGE PARKWAY
SPRING, TX 77389-1425

Completion Type		Location Exception		Increased Density	
X	Single Zone	Order No		Order No	
	Multiple Zone	723037		689887	
	Commingled			689955	

Casing and Cement							
Type	Size	Weight	Grade	Feet	PSI	SAX	Top of CMT
CONDUCTOR	20	53	A53 B	80			SURFACE
SURFACE	13 3/8	54.5	J-55	1995		855	SURFACE
PRODUCTION	5 1/2	23	P-110	25281		2770	12197

Liner								
Type	Size	Weight	Grade	Length	PSI	SAX	Top Depth	Bottom Depth
There are no Liner records to display.								

Total Depth: 25289

Packer	
Depth	Brand & Type
There are no Packer records to display.	

Plug	
Depth	Plug Type
There are no Plug records to display.	

Initial Test Data

Test Date	Formation	Oil BBL/Day	Oil-Gravity (API)	Gas MCF/Day	Gas-Oil Ratio Cu FT/BBL	Water BBL/Day	Pumpin or Flowing	Initial Shut-In Pressure	Choke Size	Flow Tubing Pressure
Nov 13, 2021	WOODFORD	32	50	2594	81063	2210	FLOWING		22/64	2532

Completion and Test Data by Producing Formation

Formation Name: WOODFORD

Code: 319WDFD

Class: GAS

Spacing Orders

Order No	Unit Size
199785	640
584421	640
723036	MULTIUNIT

Perforated Intervals

From	To
15045	25133

Acid Volumes

4,012 GALLONS

Fracture Treatments

36 STAGES - 563,639 BARRELS TREATED WATER
1,853,990 POUNDS 100 MESH SAND
6,432,310 POUNDS 40/80 WHITE SAND
6,666,620 POUNDS 40/70 WHITE SAND

Formation	Top
WOODFORD	14591

Were open hole logs run? No
Date last log run:

Were unusual drilling circumstances encountered? No
Explanation:

Other Remarks

OCC - THE FORMATION TOP IS TRUE VERTICAL DEPTH, THE FORMATION TOP 14957' IS THE MEASURED DEPTH FOR THE SAME FORMATION.

Lateral Holes

Sec: 35 TWP: 3S RGE: 2S County: CARTER

NE NE NW NE

19 FNL 1336 FEL of 1/4 SEC

Depth of Deviation: 14200 Radius of Turn: 605 Direction: 5 Total Length: 10139

Measured Total Depth: 25289 True Vertical Depth: 13239 End Pt. Location From Release, Unit or Property Line: 19

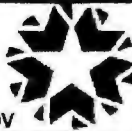
FOR COMMISSION USE ONLY

Status: Accepted

1147364

API NO. 35-019-26315
OTC PROD. 019-227393-0-0000
UNIT NO.

Oil and Gas Conservation Division
P.O. Box 52000
Oklahoma City, OK 73152-2000
405-522-0577
OCCCentralProcessing@OCC.OK.GOV



OKLAHOMA
Corporation
Commission

RECEIVED

Form 1002A
Rev. 2020

DEC 10 2021

ORIGINAL
AMENDED (Reason)

Initial Completion, Correct prod csg depth & lateral details

Rule 165:10-3-25

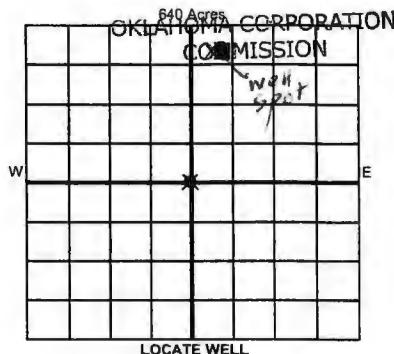
COMPLETION REPORT

TYPE OF DRILLING OPERATION

☐ STRAIGHT HOLE ☐ DIRECTIONAL HOLE ☒ HORIZONTAL HOLE
SERVICE WELL

If directional or horizontal, see reverse for bottom hole location.

COUNTY	Carter	SEC	11	TWP	4S	RGE	2E	SPUD DATE	2/10/19
LEASE NAME	Naylor	WELL NO.	3-11H2X35	DATE OF WELL COMPLETION	10/6/21	DRLG FINISHED DATE			2/14/20
SE 1/4 NW 1/4 NW 1/4 NE 1/4	FNL	559	FEL	2300	RECOMP DATE				
ELEVATION Derrick FL	802	Ground	777	Latitude	34.229156	Longitude	-97.063060		
OPERATOR NAME	XTO Energy Inc				OTC / OCC OPERATOR NO.	21003			
ADDRESS	22777 Springwoods Village parkway								
CITY	Spring	STATE	TX	ZIP	77389				



COMPLETION TYPE

<input checked="" type="radio"/> SINGLE ZONE	
<input type="radio"/> MULTIPLE ZONE	
Application Date	
<input type="radio"/> COMMINGLED	
Application Date	
LOCATION EXCEPTION ORDER NO.	695620-10
MULTIUNIT ORDER NO.	723036-10 699463-10
INCREASED DENSITY ORDER NO.	689887, 689955

CASING & CEMENT (Attach Form 1002C)

TYPE	SIZE	WEIGHT	GRADE	FEET	PSI	SAX	TOP OF CMT
CONDUCTOR	20"	53#	A53 B	80			Surface
SURFACE	13 3/8"	54.5#	J-55	1995		855	Surface
INTERMEDIATE							
PRODUCTION	5 1/2"	23#	P-110	25281		2770	12197
LINER							

PACKER @ _____ BRAND & TYPE _____ PLUG @ _____ TYPE _____ PLUG @ _____ TYPE _____ TOTAL DEPTH 25289
PACKER @ _____ BRAND & TYPE _____ PLUG @ _____ TYPE _____ PLUG @ _____ TYPE _____

COMPLETION & TEST DATA BY PRODUCING FORMATION

FORMATION	Woodford						
SPACING & SPACING ORDER NUMBER	(640) 584421, 199785	(640)					Reported to Frac Trends
CLASS: Oil, Gas, Dry, Inj, Disp, Comm Disp, Svc	Gas						
PERFORATED INTERVALS	15,045' - 25,133'						
ACID/VOLUME	4012 Gals						
FRACTURE TREATMENT (Fluids/Prop Amounts)	36 Stages - 563,639 BTW, 1,853,990# 100 Mesh Sand, 6,432,310# 40/80 White Sand, 6,666,620# 40/70 White Sand						

Min Gas Allowable (165:10-17-7)

Purchaser/Measurer

Targa Pipeline Mid-Continent LLC

INITIAL TEST DATA

V

Oil Allowable (165:10-13-3)

First Sales Date

10/6/21

INITIAL TEST DATE	11/13/21					
OIL-BBL/DAY	32					
OIL-GRAVITY (API)	50					
GAS-MCF/DAY	2594					
GAS-OIL RATIO CU FT/BBL	81063					
WATER-BBL/DAY	2210					
PUMPING OR FLOWING	Flowing					
INITIAL SHUT-IN PRESSURE	N/A					
CHOKE SIZE	22/64"					
FLOW TUBING PRESSURE	2532					

A record of the formations drilled through, and pertinent remarks are presented on the reverse. I declare that I have knowledge of the contents of this report and am authorized by my organization to make this report, which was prepared by me or under my supervision and direction, with the data and facts stated herein to be true, correct, and complete to the best of my knowledge and belief.

SIGNATURE	NAME (PRINT OR TYPE)	DATE	PHONE NUMBER
210 Park Ave, Suite 2350	Oklahoma City OK 73102	12/9/21	405-594-8453
ADDRESS	CITY STATE ZIP	EMAIL ADDRESS	
		liv.adams@exxonmobil.com	

PLEASE TYPE OR USE BLACK INK ONLY
FORMATION RECORD

Give formation names and tops, if available, or descriptions and thickness of formations drilled through. Show intervals cored or drillstem tested.

LEASE NAME _____ MAYOR _____ WELL NO. 1-11H2X35

NAMES OF FORMATIONS	TOP
Woodford	14957 MD 14591 TVD

FOR COMMISSION USE ONLY

ITD on file ☐ YES ☐ NO

APPROVED _____ DISAPPROVED _____

2) Reject Codes _____

Were open hole logs run? ☐ yes ☒ no

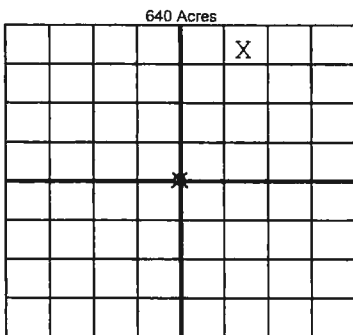
Date Last log was run _____

Was CO₂ encountered? ☐ yes ☒ no at what depths? _____

Was H₂S encountered? ☐ yes ☒ no at what depths? _____

Were unusual drilling circumstances encountered? ☐ yes ☒ no
If yes, briefly explain below.

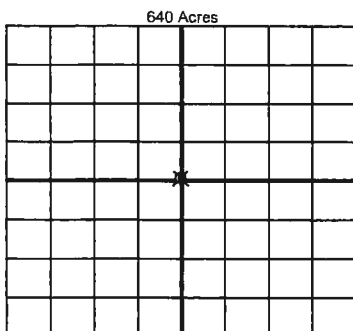
Other remarks: Initial Completion, Correct prod csg depth & lateral details.



If more than three drainholes are proposed, attach a separate sheet indicating the necessary information.

Direction must be stated in degrees azimuth. Please note, the horizontal drainhole and its end point must be located within the boundaries of the lease or spacing unit.

Directional surveys are required for all drainholes and directional wells



BOTTOM HOLE LOCATION FOR DIRECTIONAL HOLE

SEC	TWP	RGE	COUNTY
1/4	1/4	1/4	1/4
Measured Total Depth		True Vertical Depth	BHL From Lease, Unit, or Property Line:

BOTTOM HOLE LOCATION FOR HORIZONTAL HOLE: (LATERALS)

LATERAL #1

SEC	35	TWP	3S	RGE	2E	COUNTY	Carter
NE	1/4	NE	1/4	NW	1/4	NE	1/4
Depth of Deviation		14200		Radius of Turn		605	
Measured Total Depth		25289		True Vertical Depth		13239	
Feet From 1/4 Sec Lines		FNL 19		FEL 1336		Direction 5	
Total Length		10139		BHL From Lease, Unit, or Property Line:		19	

LATERAL #2

SEC	TWP	RGE	COUNTY
1/4	1/4	1/4	1/4
Depth of Deviation		Radius of Turn	
Measured Total Depth		True Vertical Depth	
Feet From 1/4 Sec Lines		Total Length	
BHL From Lease, Unit, or Property Line:			

LATERAL #3

SEC	TWP	RGE	COUNTY
1/4	1/4	1/4	1/4
Depth of Deviation		Radius of Turn	
Measured Total Depth		True Vertical Depth	
Feet From 1/4 Sec Lines		Total Length	
BHL From Lease, Unit, or Property Line:			