

Oklahoma Corporation Commission  
Oil & Gas Conservation Division  
Post Office Box 52000  
Oklahoma City, Oklahoma 73152-2000  
Rule 165: 10-3-25

Form 1002A

API No.: 35049249140002

**Completion Report**

Spud Date: November 27, 2012

OTC Prod. Unit No.: 049-209926-0-0000

Drilling Finished Date: December 08, 2012

**Amended**

1st Prod Date: February 04, 2013

Amend Reason: RECOMPLETION

Completion Date: January 07, 2013

Recomplete Date: December 12, 2018

**Drill Type: STRAIGHT HOLE**

Min Gas Allowable: Yes

Well Name: EVA 1

Purchaser/Measurer: TARGA

Location: GARVIN 1 1N 2W  
S2 NW SE NW  
985 FSL 1650 FWL of 1/4 SEC  
Latitude: 34.58859 Longitude: -97.36517  
Derrick Elevation: 976 Ground Elevation: 959

First Sales Date: 01/01/2015

Operator: MACKELLAR INC 1345  
PO BOX 18298  
7100 N CLASSEN BLVD STE 100  
OKLAHOMA CITY, OK 73154-0298

Completion Type		Location Exception		Increased Density	
X	Single Zone	Order No		Order No	
	Multiple Zone	There are no Location Exception records to display.		There are no Increased Density records to display.	
	Commingled				

Casing and Cement							
Type	Size	Weight	Grade	Feet	PSI	SAX	Top of CMT
CONDUCTOR	16			43		10	SURFACE
SURFACE	8 5/8	24 & 36	J-55	416		250	SURFACE
PRODUCTION	5 1/2	17	J-55	6966		350	4849

Liner								
Type	Size	Weight	Grade	Length	PSI	SAX	Top Depth	Bottom Depth
There are no Liner records to display.								

**Total Depth: 6970**

Packer		Plug	
Depth	Brand & Type	Depth	Plug Type
There are no Packer records to display.		6790	RBP

Initial Test Data
-------------------

Test Date	Formation	Oil BBL/Day	Oil-Gravity (API)	Gas MCF/Day	Gas-Oil Ratio Cu FT/BBL	Water BBL/Day	Pumpin or Flowing	Initial Shut-In Pressure	Choke Size	Flow Tubing Pressure
Dec 10, 2018	GIBSON	1	46.2	12	12000	2	PUMPING	200	OPEN	48

#### Completion and Test Data by Producing Formation

Formation Name: GIBSON

Code: 404GBSN

Class: OIL

#### Spacing Orders

Order No	Unit Size
NONE	

#### Perforated Intervals

From	To
6730	6735

#### Acid Volumes

NOVEMBER 9, 2018 - 500 GALLONS 7 1/2%; NOVEMBER 30, 2018 - 250 GALLONS 15%
---

#### Fracture Treatments

486 BARRELS H2O + 135 GALLONS GEL + 13,904 POUNDS 20/40 SAND
--

Formation	Top
HART SAND	6812

Were open hole logs run? Yes

Date last log run: December 07, 2012

Were unusual drilling circumstances encountered? No

Explanation:

#### Other Remarks

There are no Other Remarks.

#### FOR COMMISSION USE ONLY

1145135

Status: Accepted

API NO. 049-24914  
OTC PROD. UNIT NO. 049-209926

PLEASE TYPE OR USE BLACK INK ONLY  
NOTE:

Attach copy of original 1002A  
if recompletion or reentry.

OKLAHOMA CORPORATION COMMISSION  
Oil & Gas Conservation Division  
Post Office Box 52000  
Oklahoma City, Oklahoma 73152-2000  
Rule 165:10-3-25

Form 1002A  
Rev. 2009

☐ ORIGINAL  
☒ AMENDED (Reason)

### RECOMPLETION

### COMPLETION REPORT

#### TYPE OF DRILLING OPERATION

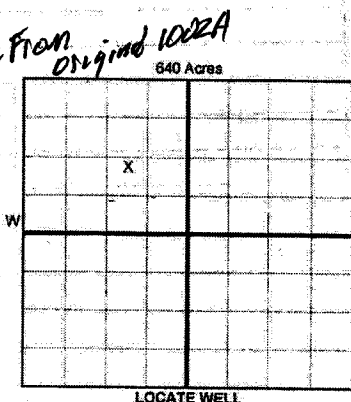
☒ STRAIGHT HOLE ☐ DIRECTIONAL HOLE ☐ HORIZONTAL HOLE  
☐ SERVICE WELL

If directional or horizontal, see reverse for bottom hole location.

COUNTY	GARVIN	SEC	1	TWP	1N	RGE	2W
LEASE NAME	EVA			WELL NO.	1		
3/4 NW 1/4 SE 1/4 NW 1/4	FSL OF 1/4 SEC	985	FWL OF 1/4 SEC	1650			
ELEVATION N Derrick	976	Ground	959	Latitude (if known)	34.58859		
OPERATOR NAME	MacKellar, Inc.			OTC/OCC OPERATOR NO.	01345		
ADDRESS	P.O. Box 18298						
CITY	Oklahoma City	STATE	OK	ZIP	73154-0298		

SPUD DATE 11-27-2012  
DRUG FINISHED DATE 12-0-2012  
DATE OF WELL COMPLETION 1-7-2013  
1st PROD DATE 2-4-2013

RECOMP DATE 12/12/18  
Longitude (if known) -97.36517



#### COMPLETION TYPE

☒ SINGLE ZONE  
☐ MULTIPLE ZONE  
Application Date  
COMINGLED  
Application Date  
LOCATION  
EXCEPTION ORDER  
INCREASED DENSITY  
ORDER NO.

#### CASING & CEMENT (Form 1002C must be attached)

TYPE	SIZE	WEIGHT	GRADE	FEET	PSI	SAX	TOP OF CMT
CONDUCTOR	16			43		10	surface
SURFACE	8 5/8	24.36	J-55	NO CHANGE 416		250	surface
INTERMEDIATE							
PRODUCTION	5 1/2	17	J-55	6966		350	4849
LINER							

PACKER @ BRAND & TYPE PLUG @ 6790' TYPE RBP PLUG @ TYPE TOTAL DEPTH 6970'  
PACKER @ BRAND & TYPE PLUG @ TYPE PLUG @ TYPE

#### COMPLETION & TEST DATA BY PRODUCING FORMATION

FORMATION	GIBSON
SPACING & SPACING ORDER NUMBER	none
CLASS: Oil, Gas, Dry, Inj, Disp, Comm Disp, Svc	OIL
	6730'-6735'
PERFORATED INTERVALS	5/21 SHOTS
ACID/VOLUME	11/9/10 - 500GA 7-1/2% 250GA 15% - 11/30/10
FRACTURE TREATMENT (Fluids/Prop Amounts)	486 BBLS H2O + 135 GALS GEL + 13,904# 20/40 SAND

Min Gas Allowable (165:10-17-7) ☒ OR Oil Allowable (165:10-13-3)  
Gas Purchaser/Measurer TARGA  
First Sales Date 1/1/2015

#### INITIAL TEST DATA

INITIAL TEST DATE	12/10/2018
OIL-BBL/DAY	1
OIL-GRAVITY (API)	46.2
GAS-MCF/DAY	12
GAS-OIL RATIO CU FT/BBBL	12,000
WATER-BBL/DAY	2
PUMPING OR FLOWING	pumping
INITIAL SHUT-IN PRESSURE	200#
CHOKE SIZE	open
FLOW TUBING PRESSURE	48

A record of the formations drilled through, and pertinent remarks are presented on the reverse. I declare that I have knowledge of the contents of this report and am authorized by my organization to make this report, which was prepared by me or under my supervision and direction, with the data and facts stated herein to be true, correct, and complete to the best of my knowledge and belief.

SIGNATURE J. BRUCE MACKELLAR  
P.O. Box 18298 Oklahoma City OK 73154-0298  
ADDRESS CITY STATE ZIP  
DATE 4/29/2020 PHONE NUMBER 405.848.2877  
EMAIL ADDRESS db\_mackellar@coxinet.net