

Oklahoma Corporation Commission
Oil & Gas Conservation Division
Post Office Box 52000
Oklahoma City, Oklahoma 73152-2000
Rule 165: 10-3-25

Form 1002A

API No.: 35081239440001

Completion Report

Spud Date: September 17, 2007

OTC Prod. Unit No.: 081-122487-0-0000

Drilling Finished Date: October 19, 2007

Amended

1st Prod Date: March 15, 2008

Amend Reason: RECOMPLETION

Completion Date: November 20, 2007

Recomplete Date: January 30, 2020

Drill Type: DIRECTIONAL HOLE

Min Gas Allowable: Yes

HORIZONTAL HOLE

Well Name: VESTA 1-14H

Purchaser/Measurer: SCISSORTAIL

Location: LINCOLN 15 14N 4E
SE SE SE SE
213 FSL 180 FEL of 1/4 SEC
Derrick Elevation: 895 Ground Elevation: 879

First Sales Date: 02/01/2020

Operator: PRAIRIE GAS COMPANY OF OKLAHOMA LLC 24073

2250 E 73RD ST STE 500
TULSA, OK 74136-6834

Completion Type		Location Exception		Increased Density	
X	Single Zone	Order No		Order No	
	Multiple Zone	712400		There are no Increased Density records to display.	
	Commingled				

Casing and Cement							
Type	Size	Weight	Grade	Feet	PSI	SAX	Top of CMT
SURFACE	9 5/8			459		255	SURFACE
PRODUCTION	7			5512		450	1500

Liner								
Type	Size	Weight	Grade	Length	PSI	SAX	Top Depth	Bottom Depth
There are no Liner records to display.								

Total Depth: 8906

Packer		Plug	
Depth	Brand & Type	Depth	Plug Type
There are no Packer records to display.		4237	CIBP

Initial Test Data

Test Date	Formation	Oil BBL/Day	Oil-Gravity (API)	Gas MCF/Day	Gas-Oil Ratio Cu FT/BBL	Water BBL/Day	Pumpin or Flowing	Initial Shut-In Pressure	Choke Size	Flow Tubing Pressure
Feb 05, 2020	PRUE			45		2059	PUMPING			

Completion and Test Data by Producing Formation

Formation Name: PRUE

Code: 404PRUE

Class: GAS

Spacing Orders

Order No	Unit Size
707976	160

Perforated Intervals

From	To
3806	3866

Acid Volumes

2,478 GALLONS 15% NEFE

Fracture Treatments

1,260 BARRELS 25 POUNDS GEL, 100,000 POUNDS 16/30 SAND

Formation	Top
OSWEGO LIME	3740
PRUE SAND	3803
RED FORK SAND	4135
MISSISSIPPI LIME	4658
WOODFORD SHALE	5155
HUNTON LIME	5259
SYLVAN SHALE	5370

Were open hole logs run? No

Date last log run:

Were unusual drilling circumstances encountered? No

Explanation:

Other Remarks

There are no Other Remarks.

Bottom Holes

Sec: 14 TWP: 14N RGE: 4E County: LINCOLN

SW NE SW SW

883 FSL 881 FWL of 1/4 SEC

Depth of Deviation: 0 Radius of Turn: 0 Direction: 0 Total Length: 0

Measured Total Depth: 5517 True Vertical Depth: 4928 End Pt. Location From Release, Unit or Property Line: 881

Lateral Holes

Sec: 14 TWP: 14N RGE: 4E County: LINCOLN

NW NW NE SW

2584 FSL 1403 FWL of 1/4 SEC

Depth of Deviation: 5249 Radius of Turn: 750 Direction: 45 Total Length: 1949

Measured Total Depth: 7433 True Vertical Depth: 4830 End Pt. Location From Release, Unit or Property Line: 1403

Sec: 14 TWP: 14N RGE: 4E County: LINCOLN

SE SE SW NE

83 FSL 1114 FWL of 1/4 SEC

Depth of Deviation: 5753 Radius of Turn: 1515 Direction: 59 Total Length: 3151

Measured Total Depth: 8906 True Vertical Depth: 4809 End Pt. Location From Release, Unit or Property Line: 1526

FOR COMMISSION USE ONLY	
Status: Accepted	1145410

EMAIL ADDRESS

PLEASE TYPE OR USE BLACK INK ONLY

FORMATION RECORD

Give formation names and tops, if available, or descriptions and thickness of formations drilled through. Show intervals cored or dristestem tested.

LEASE NAME

Vesta

WELL NO.

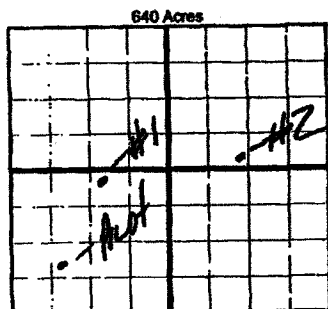
1-14H

NAMES OF FORMATIONS	TOP
Oswego LM.	3740'
Prue SO.	3803'
Red Fork SO.	4135'
Miss LM.	4658'
Woodford SH.	5155'
Hutton LM.	5,259'
Sylvan SH.	5,370'

FOR COMMISSION USE ONLY	
ITD on file <input checked="" type="checkbox"/> YES <input type="checkbox"/> NO	
APPROVED <u>SPV</u>	DISAPPROVED
<u>S-5-08</u>	2) Reject Codes

Were open hole logs run?	yes <input type="checkbox"/> no <input checked="" type="checkbox"/>
Date Last log was run	
Was CO ₂ encountered?	yes <input type="checkbox"/> no <input checked="" type="checkbox"/> at what depths?
Was H ₂ S encountered?	yes <input type="checkbox"/> no <input checked="" type="checkbox"/> at what depths?
Were unusual drilling circumstances encountered?	yes <input type="checkbox"/> no <input checked="" type="checkbox"/>
If yes, briefly explain.	

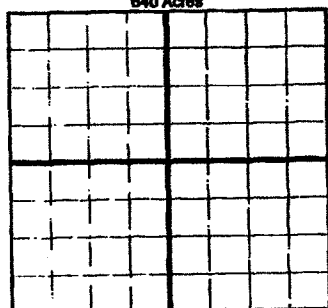
Other remarks:



If more than three drainholes are proposed, attach a separate sheet indicating the necessary information.

Direction must be stated in degrees azimuth. Please note, the horizontal drainhole and its end point must be located within the boundaries of the lease or spacing unit.

Directional surveys are required for all drainholes and directional wells.



BOTTOM HOLE LOCATION FOR DIRECTIONAL HOLE

SEC 14	TWP 14N	RGE 4E	COUNTY Lincoln
Spot Location SW 1/4	NE 1/4	SW 1/4	SW 1/4
Measured Total Depth	5517'	True Vertical Depth	4928'
Feet From 1/4 Sec Lines	883'	FSL	881'
BHL From Lease, Unit, or Property Line:	881		

BOTTOM HOLE LOCATION FOR HORIZONTAL HOLE: (LATERALS)

SEC 14	TWP 14N	RGE 4E	COUNTY Lincoln
Spot Location NW 1/4	NW 1/4	NE 1/4	SW 1/4
Depth of Deviation	5249'	Radius of Turn	250.52
Measured Total Depth	7,133'	True Vertical Depth	4830'
Feet From 1/4 Sec Lines	2584'	FSL	1403'
Direction	45	Total Length	1,919.28'
End Pt Location From Lease, Unit or Property Line:	1403		

LATERAL #2

SEC 14	TWP 14N	RGE 4E	COUNTY Lincoln
Spot Location SE 1/4	SE 1/4	SW 1/4	NE 1/4
Depth of Deviation	5753'	Radius of Turn	1515.49
Measured Total Depth	8,906'	True Vertical Depth	4809'
Feet From 1/4 Sec Lines	83'	FSL	1,114'
Direction	59.10	Total Length	3,151.15'
End Pt Location From Lease, Unit or Property Line:	1526		

LATERAL #3

SEC	TWP	RGE	COUNTY
Spot Location	1/4	1/4	1/4
Depth of Deviation	Radius of Turn		Dir
Measured Total Depth	True Vertical Depth	End Pt Location	

kinda use as back

API NO. 081-23944
OTC PROD. UNIT NO. 081-122487

(PLEASE TYPE OR USE BLACK INK ONLY)

OKLAHOMA CORPORATION COMMISSION

Oil & Gas Conservation Division
Post Office Box 52000
Oklahoma City, Oklahoma 73152-2000
Rule 165:10-3-25

Form 1002A
Rev. 2009

1002A
Addendum

ORIGINAL
AMENDED (Reason)

Recompletion

COMPLETION REPORT

TYPE OF DRILLING OPERATION
☐ STRAIGHT HOLE ☐ DIRECTIONAL HOLE ☒ HORIZONTAL HOLE
☐ SERVICE WELL

SPUD DATE 9/17/07
DRLG FINISHED DATE 10/19/07
DATE OF WELL COMPLETION 11/20/07
1st PROD DATE 3/15/08
RECOMP DATE 1/30/20
WELL NO. 1-14H
FSL OF 1/4 SEC 213
FWL OF 1/4 SEC 2460
ELEVATION 895
Ground 879
Latitude (if known)
Longitude (if known)
OTC/OCC OPERATOR NO. 24073

640 Acres
LOCATE WELL

If directional or horizontal, see reverse for bottom hole location.

COUNTY Lincoln SEC 15 TWP 14N RGE 4E
LEASE NAME Vesta
SE 1/4 SE 1/4 SE 1/4 SE 1/4 FSL OF 1/4 SEC 213
ELEVATION 895 Ground 879
OPERATOR NAME Prairie Gas Company of Oklahoma, LLC
ADDRESS 2250 E 73rd Street, Suite 500
CITY Tulsa STATE OK ZIP 74136

COMPLETION TYPE

☒ SINGLE ZONE
☐ MULTIPLE ZONE
Application Date
COMINGLED
Application Date
LOCATION EXCEPTION ORDER NO. 712400
INCREASED DENSITY ORDER NO.

CASING & CEMENT (Attach Form 1002C)

TYPE	SIZE	WEIGHT	GRADE	FEET	PSI	SAX	TOP OF CMT
CONDUCTOR							
SURFACE	9 5/8"			459		255	Surface
INTERMEDIATE							
PRODUCTION	7"			5512		450	1500
LINER							

TOTAL DEPTH 8906 MD

PACKER @ BRAND & TYPE
PACKER @ BRAND & TYPE

PLUG @ TYPE PLUG @ 4237 TYPE CIBP
PLUG @ TYPE PLUG @ TYPE

COMPLETION & TEST DATA BY PRODUCING FORMATION

FORMATION True
SPACING & SPACING ORDER NUMBER 160 / 707976
CLASS: Oil, Gas, Dry, Inj, Disp, Comm Disp, Svc Gas
PERFORATED INTERVALS 3806-3866
ACID/VOLUME 2478 gal 15% NeFe
FRACTURE TREATMENT (Fluids/Prop Amounts) 1260 Bbls 25# Gel
100,000# 16/30 Sand

RECEIVED

JUL 09 2020

Oklahoma Corporation
Commission

ScissorTail
2/1/2020



Min Gas Allowable (165:10-17-7)
OR
Oil Allowable (165:10-13-3)

Gas Purchaser/Measurer
First Sales Date

INITIAL TEST DATA

INITIAL TEST DATE	2/5/2020
OIL-BBL/DAY	0
OIL-GRAVITY (API)	
GAS-MCF/DAY	45
GAS-OIL RATIO CU FT/BBL	
WATER-BBL/DAY	2059
PUMPING OR FLOWING	Pumping
INITIAL SHUT-IN PRESSURE	
CHOKE SIZE	
FLOW TUBING PRESSURE	

A record of the formations drilled through, and pertinent remarks are presented on the reverse. I declare that I have knowledge of the contents of this report and am authorized by my organization to make this report, which was prepared by me or under my supervision and direction, with the data and facts stated herein to be true, correct, and complete to the best of my knowledge and belief.

SIGNATURE Kim Booth
2250 E. 73rd St., Suite 500
ADDRESS
Tulsa OK 74136
CITY STATE ZIP
DATE 7/7/20
PHONE NUMBER 539-867-2095
EMAIL ADDRESS kbooth@pgcollc.com