

Oklahoma Corporation Commission
Oil & Gas Conservation Division
Post Office Box 52000
Oklahoma City, Oklahoma 73152-2000
Rule 165: 10-3-25

Form 1002A

API No.: 35109208580002

Completion Report

Spud Date: November 01, 1983

OTC Prod. Unit No.: 109-79535

Drilling Finished Date: November 18, 1983

Amended

1st Prod Date: February 13, 1984

Amend Reason: DEEPEN (SEE REMARKS)

Completion Date: February 13, 1984

Recomplete Date: April 12, 2019

Drill Type: STRAIGHT HOLE

Well Name: PATRICK-JESS 2

Purchaser/Measurer:

Location: OKLAHOMA 4 14N 3W
C SE NE
660 FSL 1980 FWL of 1/4 SEC
Derrick Elevation: 1059 Ground Elevation: 1051

First Sales Date:

Operator: GLB EXPLORATION INC 18634

7716 MELROSE LN
OKLAHOMA CITY, OK 73127-6002

Completion Type		Location Exception		Increased Density	
	Single Zone	Order No		Order No	
	Multiple Zone	There are no Location Exception records to display.		There are no Increased Density records to display.	
	Commingled				

Casing and Cement							
Type	Size	Weight	Grade	Feet	PSI	SAX	Top of CMT
SURFACE	8 5/8	24	K-55	835		450	SURFACE
PRODUCTION	5 1/2	15.5	J-55	6474		400	5466

Liner								
Type	Size	Weight	Grade	Length	PSI	SAX	Top Depth	Bottom Depth
There are no Liner records to display.								

Total Depth: 7216

Packer		Plug	
Depth	Brand & Type	Depth	Plug Type
There are no Packer records to display.		5800	CEMENT

Initial Test Data										
Test Date	Formation	Oil BBL/Day	Oil-Gravity (API)	Gas MCF/Day	Gas-Oil Ratio Cu FT/BBL	Water BBL/Day	Pumpin or Flowing	Initial Shut-In Pressure	Choke Size	Flow Tubing Pressure
There are no Initial Data records to display.										

Completion and Test Data by Producing Formation

Formation Name: NONE

Code:

Class: PLUG AND ABANDON

Formation	Top
BASAL MCLISH SAND	6846
OIL CREEK	6990
ARBUCKLE	7065

Were open hole logs run? Yes

Date last log run: February 28, 2019

Were unusual drilling circumstances encountered? No

Explanation:

Other Remarks

OEEPENED WELL FROM END OF 5 1/2" CASING TO 7,216'. FORMATIONS WET. SET CEMENT PLUG FROM TOTAL DEPTH TO 5,800' TO PLUG OFF BARTLESVILLE PERFORATIONS. PLAN TO SUBMIT RECOMPLETION INTENT FOR OTHER FORMATIONS BEHIND PIPE. OCC - OPERATOR CHANGED PLANS PLUGGED WELL 4/12/2019

FOR COMMISSION USE ONLY

1142285

Status: Accepted

RECEIVED

Form 1002A
Rev. 2009

MAR 08 2019

Oklahoma Corporation
Commission

OKLAHOMA CORPORATION COMMISSION

Oil & Gas Conservation Division
Post Office Box 52000

Oklahoma City, Oklahoma 73152-2000

Rule 165:10-3-25

COMPLETION REPORT

API
NO. 109-20858
OTC PROD.
UNIT NO. 109-79535

PLEASE TYPE OR USE BLACK INK ONLY

NOTE:

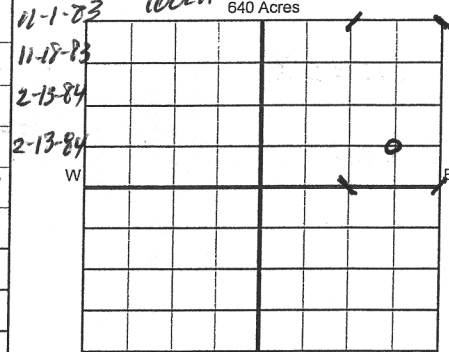
Attach copy of original 1002A if recompletion or ree

☐ ORIGINAL
☒ AMENDED (Reason)Deepen (see remarks)

TYPE OF DRILLING OPERATION

☒ STRAIGHT HOLE ☐ DIRECTIONAL HOLE ☐ HORIZONTAL HOLE
☐ SERVICE WELL

If directional or horizontal, see reverse for bottom hole location.

COUNTY OKLAHOMA SEC 4 TWP 14N RGE 3W
LEASE NAME PATRICK-JESS WELL NO. 2
C 1/4 SE 1/4 NE 1/4 1/4 FSL 660 FWL OF 1/4 SEC 1980
ELEVATION N Derrick 1059 Ground 1051 Latitude (if known)
OPERATOR NAME GLB EXPLORATION, INC. OTC/OCC OPERATOR N 18634-0
ADDRESS 7716 MELROSE LANE
CITY OKLAHOMA CITY STATE OK ZIP 73127SPUD DATE 2/24/19
DRLG FINISHED DATE 2/28/19
DATE OF WELL COMPLETION 2/28/19
1st PROD DATE 2-13-84
RECOMP DATE 4-12-2019
Longitude (if known)

LOCATE WELL

COMPLETION TYPE

☐ SINGLE ZONE
☐ MULTIPLE ZONE
Application Date
☐ COMMINGLED
Application Date
LOCATION
EXCEPTION ORDER
INCREASED DENSITY
ORDER NO.

CASING & CEMENT (Form 1002C must be attached)

TYPE	SIZE	WEIGHT	GRADE	FEET	PSI	SAX	TOP OF CMT
CONDUCTOR							
SURFACE	8 5/8	24	L-55	835		450	SURFACE
INTERMEDIATE							
PRODUCTION	5 1/2	15.5	J-55	6474		400	5966
LINER							
TOTAL DEPTH						7216	

PACKER @ _____ BRAND & TYPE Cement PLUG @ 5800 TYPE Cement PLUG @ _____ TYPE _____
PACKER @ _____ BRAND & TYPE _____ PLUG @ _____ TYPE _____ PLUG @ _____ TYPE _____

COMPLETION & TEST DATA BY PRODUCING FORMATION

FORMATION	<u>NONE</u>						
SPACING & SPACING ORDER NUMBER							
CLASS: Oil, Gas, Dry, Inj, Disp, Comm Disp, Svc	<u>PTA</u>						
PERFORATED INTERVALS							
ACID/VOLUME							
FRACTURE TREATMENT (Fluids/Prop Amounts)							

Min Gas Allowable (165:10-17-7)

Gas Purchaser/Measurer

OR

First Sales Date

INITIAL TEST DATA

Oil Allowable (165:10-13-3)

INITIAL TEST DATE							
OIL-BBL/DAY							
OIL-GRAVITY (API)							
GAS-MCF/DAY							
GAS-OIL RATIO CU FT/BBL							
WATER-BBL/DAY							
PUMPING OR FLOWING							
INITIAL SHUT-IN PRESSURE							
CHOKE SIZE							
FLOW TUBING PRESSURE							

AS SUBMITTED

A record of the formations drilled through, and pertinent remarks are presented on the reverse. I declare that I have knowledge of the contents of this report and am authorized by my organization to make this report, which was prepared by me or under my supervision and direction, with the data and facts stated herein to be true, correct, and complete to the best of my knowledge and belief.

SIGNATURE Glenn Blumstein NAME (PRINT OR TYPE)
7716 MELROSE LANE ADDRESS
OKC CITY OK STA 73127 ZIP
3/6/19 DATE 405-757-0049 PHONE NUMBER
glb@glbexplorationinc.com EMAIL ADDRESS

PLEASE TYPE OR USE BLACK INK ONLY
FORMATION RECORD

Give formation names and tops, if available, or descriptions and thickness of formations drilled through. Show intervals cored or drillstem tested.

LEASE NAME PATRICK - Jess

WELL NO. 2

NAMES OF FORMATIONS	TOP
BASH McLISH Sand	6846
OIL CREEK	6990
ARBuckle	7065

FOR COMMISSION USE ONLY	
ITD on file <input type="checkbox"/> YES <input type="checkbox"/> NO	
APPROVED _____	DISAPPROVED _____
2) Reject Codes	

Were open hole logs run?	<u>X</u> yes <input type="checkbox"/> no
Date Last log was run	<u>2/28/19</u>
Was CO ₂ encountered?	<input type="checkbox"/> yes <u>X</u> no at what depths? _____
Was H ₂ S encountered?	<input type="checkbox"/> yes <u>X</u> no at what depths? _____
Were unusual drilling circumstances encountered?	<input type="checkbox"/> yes <u>X</u> no
If yes, briefly explain below	

Other remarks: DEEPEMED WELL FROM END OF 5 1/2" CASING TO 7216. FORMATIONS WET. SET CEMENT PLUG FROM TD TO 5800' TO PLUG OFF BARTESVILLE PERFORATIONS. PLAN TO SUBMITT RECOMPLETION INTENT FOR OTHER FORMATIONS BEHIND PIPE. ⁰⁰⁰ Operator Changed plans plugged well 4-12-2019

640 Acres

If more than three drainholes are proposed, attach a separate sheet indicating the necessary information.

Direction must be stated in degrees azimuth. Please note, the horizontal drainhole and its end point must be located within the boundaries of the lease or spacing unit.

Directional surveys are required for all drainholes and directional wells.

640 Acres

BOTTOM HOLE LOCATION FOR DIRECTIONAL HOLE

SEC	TWP	RGE	COUNTY
Spot Location	1/4	1/4	1/4
Measured Total Depth	True Vertical Depth		
Feet From 1/4 Sec Lines FSL FWL			
BHL From Lease, Unit, or Property Line:			

BOTTOM HOLE LOCATION FOR HORIZONTAL HOLE: (LATERALS)

LATERAL #1			
SEC	TWP	RGE	COUNTY
Spot Location	1/4	1/4	1/4
Depth of Deviation	Radius of Turn		Direction
Measured Total Depth	True Vertical Depth		Total Length
BHL From Lease, Unit, or Property Line:			

LATERAL #2			
SEC	TWP	RGE	COUNTY
Spot Location	1/4	1/4	1/4
Depth of Deviation	Radius of Turn		Direction
Measured Total Depth	True Vertical Depth		Total Length
BHL From Lease, Unit, or Property Line:			

LATERAL #3			
SEC	TWP	RGE	COUNTY
Spot Location	1/4	1/4	1/4
Depth of Deviation	Radius of Turn		Direction
Measured Total Depth	True Vertical Depth		Total Length
BHL From Lease, Unit, or Property Line:			