

Oklahoma Corporation Commission
Oil & Gas Conservation Division
Post Office Box 52000
Oklahoma City, Oklahoma 73152-2000
Rule 165: 10-3-25

Form 1002A

API No.: 35069201880000

Completion Report

Spud Date: September 27, 2018

OTC Prod. Unit No.: 069-224743

Drilling Finished Date: October 25, 2018

1st Prod Date: January 06, 2019

Completion Date: December 14, 2018

Drill Type: HORIZONTAL HOLE

Well Name: ANDERSON 1-15H10X3

Purchaser/Measurer:

Location: JOHNSTON 15 4S 4E
SE NE NW NW
395 FNL 1210 FWL of 1/4 SEC
Latitude: 35.214935 Longitude: -96.87646
Derrick Elevation: 0 Ground Elevation: 735

First Sales Date:

Operator: XTO ENERGY INC 21003

22777 SPRINGWOODS VILLAGE PKWY
SPRING, TX 77389-1425

Completion Type	
X	Single Zone
	Multiple Zone
	Commingled

Location Exception	
Order No	
686566	

Increased Density	
Order No	
There are no Increased Density records to display.	

Casing and Cement							
Type	Size	Weight	Grade	Feet	PSI	SAX	Top of CMT
CONDUCTOR	20	94	J-55	110			
SURFACE	13 3/8	54.5	J-55	629		360	SURFACE
INTERMEDIATE	9 5/8	39.99	P-110	9251		675	6751
PRODUCTION	5 1/2	23	P-110	19749		2845	4325

Liner								
Type	Size	Weight	Grade	Length	PSI	SAX	Top Depth	Bottom Depth
There are no Liner records to display.								

Total Depth: 19749

Packer	
Depth	Brand & Type
There are no Packer records to display.	

Plug	
Depth	Plug Type
There are no Plug records to display.	

Initial Test Data

Test Date	Formation	Oil BBL/Day	Oil-Gravity (API)	Gas MCF/Day	Gas-Oil Ratio Cu FT/BBL	Water BBL/Day	Pumpin or Flowing	Initial Shut-In Pressure	Choke Size	Flow Tubing Pressure
Feb 23, 2019	CANEY	250	45	161	644	523	GAS LIFT	1692	64/64	155

Completion and Test Data by Producing Formation

Formation Name: CANEY

Code: 354CNEY

Class: OIL

Spacing Orders

Order No	Unit Size
547807	640
553147	640
687295	MULTIUNIT

Perforated Intervals

From	To
9385	19614

Acid Volumes

55,000 GALLONS

Fracture Treatments

50 STAGES - 643,807 BBLS WATER, 2,239,811 POUNDS 100 MESH SAND, 23,152,334 POUNDS 40/70 SAND

Formation	Top
CANEY	9177

Were open hole logs run? No

Date last log run:

Were unusual drilling circumstances encountered? No

Explanation:

Other Remarks

IRREGULAR SECTION. OCC - THIS DOCUMENT IS ACCEPTED BASED ON THE DATA SUBMITTED NEITHER THE FINAL LOCATION EXCEPTION NOR THE FINAL MULTIUNIT ORDERS HAVE BEEN ISSUED.

Lateral Holes

Sec: 3 TWP: 4S RGE: 4E County: JOHNSTON

NE NW NW NW

58 FNL 634 FWL of 1/4 SEC

Depth of Deviation: 8250 Radius of Turn: 827 Direction: 359 Total Length: 667

Measured Total Depth: 19749 True Vertical Depth: 9112 End Pt. Location From Release, Unit or Property Line: 58

FOR COMMISSION USE ONLY

1142283

Status: Accepted

API NO. 069-20188
OTC PROD. UNIT NO. 069-224743

(PLEASE TYPE OR USE BLACK INK ONLY)

OKLAHOMA CORPORATION COMMISSION
Oil & Gas Conservation Division
Post Office Box 52000
Oklahoma City, Oklahoma 73152-2000
Rule 165:10-3-25

RECEIVED

MAR 07 2019

Form 1002A
Rev. 2009

Oklahoma Corporation
Commission

☒ ORIGINAL
☐ AMENDED (Reason)

COMPLETION REPORT

TYPE OF DRILLING OPERATION

☐ STRAIGHT HOLE ☐ DIRECTIONAL HOLE ☒ HORIZONTAL HOLE
☐ SERVICE WELL

If directional or horizontal, see reverse for bottom hole location.

COUNTY Johnston SEC 15 TWP 4S RGE 4E
LEASE NAME Anderson 1-15H10X3
SE 1/4 NE 1/4 NW 1/4 NW 1/4 FNL OF 1/4 SEC 395 FWL OF 1/4 SEC 1210
ELEVATION 735' Derrick FL Ground Latitude (if known) 35.214935 Longitude (if known) -96.87646
OPERATOR NAME XTO Energy Inc. OTC / OCC OPERATOR NO. 21003
ADDRESS 210 Park Avenue, Suite 2350
CITY Oklahoma City STATE OK RPORATIO ZIP 73102

SPUD DATE 9/27/2018
DRLG FINISHED DATE 10/25/2018
DATE OF WELL COMPLETION 12/14/2018
1st PROD DATE 1/6/2019
RECOMP DATE

640 Acres
LOCATE WELL

COMPLETION TYPE

☒ SINGLE ZONE
☐ MULTIPLE ZONE
☐ COMMINGLED
LOCATION EXCEPTION ORDER NO. 686566, 687295
INCREASED DENSITY ORDER NO.

CASING & CEMENT (Attach Form 1002C)

TYPE	SIZE	WEIGHT	GRADE	FEET	PSI	SAX	TOP OF CMT
CONDUCTOR	20"	94	J-55	110			
SURFACE	13 3/8"	54.5	J-55	629		360	surface
INTERMEDIATE	9 5/8"	39.99	P-110	9,251		675	6751
PRODUCTION	5 1/2"	23	P-110	19749		2845	4325
LINER							
TOTAL DEPTH							19749'

PACKER @ BRAND & TYPE PLUG @ TYPE PLUG @ TYPE
PACKER @ BRAND & TYPE PLUG @ TYPE PLUG @ TYPE

COMPLETION & TEST DATA BY PRODUCING FORMATION

FORMATION	Caney					
SPACING & SPACING ORDER NUMBER	Oil 553147(640) 547807(640) 687295 (Multicunit)					
CLASS: Oil, Gas, Dry, Inj, Disp, Comm Disp, Svc	50 Stages	sec 3	sec 10			
PERFORATED INTERVALS	9385-19614					
ACID/VOLUME	55,000 gals					
FRACTURE TREATMENT (Fluids/Prop Amounts)	643,807 BTW					
	2,239,811# 100 Mesh sand					
	23,152,334# 40/70 sand					

Min Gas Allowable (165:10-17-7)
OR
Oil Allowable (165:10-13-3)

Gas Purchaser/Measurer
First Sales Date

INITIAL TEST DATA

INITIAL TEST DATE	2/23/2019					
OIL-BBL/DAY	250					
OIL-GRAVITY (API)	45					
GAS-MCF/DAY	161					
GAS-OIL RATIO CU FT/BBL	644					
WATER-BBL/DAY	523					
PUMPING OR FLOWING	Gas Lift					
INITIAL SHUT-IN PRESSURE	1692					
CHOKE SIZE	64/64"					
FLOW TUBING PRESSURE	155					

AS SUBMITTED

A record of the formations drilled through, and pertinent remarks are presented on the reverse. I declare that I have knowledge of the contents of this report and am authorized by my organization to make this report, which was prepared by me or under my supervision and direction, with the data and facts stated herein to be true, correct, and complete to the best of my knowledge and belief.

Signature: Debbie Waggoner
210 Park Avenue, Suite 2350
Oklahoma City
ADDRESS CITY STATE ZIP
NAME (PRINT OR TYPE) Debbie Waggoner
DATE 3/5/2019
PHONE NUMBER 405-319-3243
debbie_waggoner@xtoenergy.com
EMAIL ADDRESS

PLEASE TYPE OR USE BLACK INK ONLY
FORMATION RECORD

Give formation names and tops, if available, or descriptions and thickness of formations drilled through. Show intervals cored or drillstem tested.

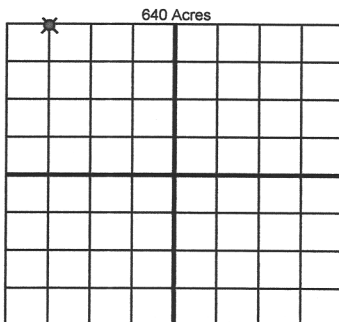
NAMES OF FORMATIONS	TOP
CANEY	9177 MD
	8995 TVD

LEASE NAME Anderson WELL NO. 1-15H10X3

FOR COMMISSION USE ONLY	
ITD on file <input type="checkbox"/> YES <input type="checkbox"/> NO	
APPROVED _____	DISAPPROVED _____
2) Reject Codes	

Were open hole logs run?	____ yes ____ no
Date Last log was run	_____
Was CO ₂ encountered?	____ yes ____ no at what depths? _____
Was H ₂ S encountered?	____ yes ____ no at what depths? _____
Were unusual drilling circumstances encountered?	____ yes ____ no
If yes, briefly explain below	

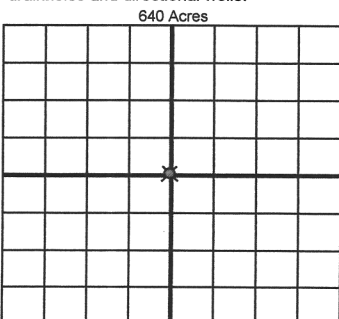
Other remarks: Irregular Section



If more than three drainholes are proposed, attach a separate sheet indicating the necessary information.

Direction must be stated in degrees azimuth.
Please note, the horizontal drainhole and its end point must be located within the boundaries of the lease or spacing unit.

Directional surveys are required for all drainholes and directional wells.



BOTTOM HOLE LOCATION FOR DIRECTIONAL HOLE

SEC	TWP	RGE	COUNTY
Spot Location	1/4	1/4	1/4
Measured Total Depth	True Vertical Depth	BHL From Lease, Unit, or Property Line:	

BOTTOM HOLE LOCATION FOR HORIZONTAL HOLE: (LATERALS)

LATERAL #1			
SEC	TWP	RGE	COUNTY
3	04S	04E	Johnston
Spot Location	NE 1/4	NW 1/4	NW 1/4
Depth of Deviation	8,250	Radius of Turn	827.6
Measured Total Depth	19,749	Direction	359-300.8
		Total Length	667
		BHL From Lease, Unit, or Property Line:	
		58 FNL & 634 FWL	

LATERAL #2			
SEC	TWP	RGE	COUNTY
Spot Location	1/4	1/4	1/4
Depth of Deviation	Radius of Turn	Direction	Total Length
Measured Total Depth	True Vertical Depth	BHL From Lease, Unit, or Property Line:	

LATERAL #3			
SEC	TWP	RGE	COUNTY
Spot Location	1/4	1/4	1/4
Depth of Deviation	Radius of Turn	Direction	Total Length
Measured Total Depth	True Vertical Depth	BHL From Lease, Unit, or Property Line:	