

Oklahoma Corporation Commission  
Oil & Gas Conservation Division  
Post Office Box 52000  
Oklahoma City, Oklahoma 73152-2000  
Rule 165: 10-3-25

Form 1002A

API No.: 35029213920000

**Completion Report**

Spud Date: February 02, 2019

OTC Prod. Unit No.: 029-225258-0-0000

Drilling Finished Date: February 22, 2019

1st Prod Date: May 20, 2019

Completion Date: May 16, 2019

**Drill Type:** HORIZONTAL HOLE

Well Name: TOMLINSON XLE 2H-23

Purchaser/Measurer: ATOKA MIDSTREAM LLC

Location: COAL 23 1N 9E  
NW SW SE SE  
471 FSL 1028 FEL of 1/4 SEC  
Latitude: 34.328728 Longitude: -96.1921102  
Derrick Elevation: 672 Ground Elevation: 650

First Sales Date: 05/20/2019

Operator: PABLO ENERGY II LLC 21896  
PO BOX 2945  
801 S FILLMORE AVE STE 130  
AMARILLO, TX 79105-2945

Completion Type		Location Exception		Increased Density	
X	Single Zone	Order No		Order No	
	Multiple Zone	698587		There are no Increased Density records to display.	
	Commingled				

Casing and Cement							
Type	Size	Weight	Grade	Feet	PSI	SAX	Top of CMT
CONDUCTOR	20			40		5	SURFACE
SURFACE	9 5/8	40	J-55	482		175	SURFACE
PRODUCTION	5 1/2	20	P-110	14039	800	1605	3780

Liner								
Type	Size	Weight	Grade	Length	PSI	SAX	Top Depth	Bottom Depth
There are no Liner records to display.								

**Total Depth: 14050**

Packer	
Depth	Brand & Type
There are no Packer records to display.	

Plug	
Depth	Plug Type
There are no Plug records to display.	

Initial Test Data
-------------------

Test Date	Formation	Oil BBL/Day	Oil-Gravity (API)	Gas MCF/Day	Gas-Oil Ratio Cu FT/BBL	Water BBL/Day	Pumpin or Flowing	Initial Shut-In Pressure	Choke Size	Flow Tubing Pressure
May 23, 2019	WOODFORD	5	42	4158	831600	1217	FLOWING	1210	46/64	760

#### Completion and Test Data by Producing Formation

Formation Name: WOODFORD

Code: 319WDFD

Class: GAS

#### Spacing Orders

Order No	Unit Size
634608	480

#### Perforated Intervals

From	To
7000	13940

#### Acid Volumes

48,914 GALLONS 15% HCL
------------------------

#### Fracture Treatments

218,381 BARRELS SLICK WATER, 7,317,940 POUNDS 40/70 SAND
--

Formation	Top
WAPANUCKA	4836
CROMWELL	5639
CANEY	6042
WOODFORD A1	6307
WOODFORD A2	6412

Were open hole logs run? No

Date last log run: February 21, 2019

Were unusual drilling circumstances encountered? No

Explanation:

#### Other Remarks

OCC- THE SPACED 480 ACRE UNIT IS AN IRREGULAR UNIT COMPRISING SE/4 SECTION 14 AND E/2 SECTION 23- 1N -9E.

#### Lateral Holes

Sec: 14 TWP: 1N RGE: 9E County: COAL

SE NE NW SE

578 FNL 1047 FWL of 1/4 SEC

Depth of Deviation: 6000 Radius of Turn: 689 Direction: 360 Total Length: 6968

Measured Total Depth: 14050 True Vertical Depth: 6758 End Pt. Location From Release, Unit or Property Line: 578

#### FOR COMMISSION USE ONLY

1143146

Status: Accepted

EMAIL ADDRESS

PLEASE TYPE OR USE BLACK INK ONLY

FORMATION RECORD

Give formation names and tops, if available, or descriptions and thickness of formations drilled through. Show intervals cored or drillstem tested.

LEASE NAME TOMLINSON XLE

WELL NO. 2H-23

NAMES OF FORMATIONS	TOP
WAPANUCKA	4836 TVD
CROMWELL	5639 TVD
CANEY	6042 TVD
WOODFORD A1	6307 TVD
WOODFORD A2	6412 TVD

FOR COMMISSION USE ONLY

ITD on file ☐ YES ☐ NO

APPROVED \_\_\_\_\_ DISAPPROVED \_\_\_\_\_

2) Reject Codes \_\_\_\_\_

Were open hole logs run? yes ☒ no ☐

Date Last log was run Geological Mud Log - 2/21/15

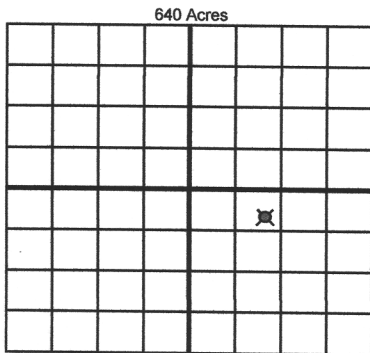
Was CO<sub>2</sub> encountered? yes ☒ no ☐ at what depths? \_\_\_\_\_

Was H<sub>2</sub>S encountered? yes ☒ no ☐ at what depths? \_\_\_\_\_

Were unusual drilling circumstances encountered? yes ☒ no ☐

If yes, briefly explain below \_\_\_\_\_

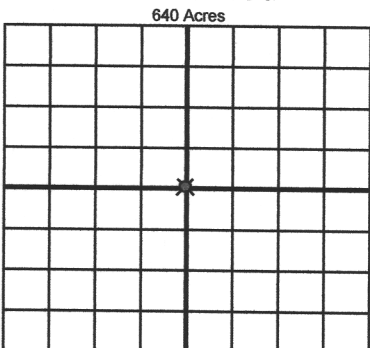
Other remarks: OCC - The spaced 480 acre unit is irregular and comprises of SE 1/4 Sec 14 and E 1/2 Sec 23-1N-4E.



If more than three drainholes are proposed, attach a separate sheet indicating the necessary information.

Direction must be stated in degrees azimuth. Please note, the horizontal drainhole and its end point must be located within the boundaries of the lease or spacing unit.

Directional surveys are required for all drainholes and directional wells.



BOTTOM HOLE LOCATION FOR DIRECTIONAL HOLE

SEC	TWP	RGE	COUNTY
Spot Location			
1/4	1/4	1/4	1/4
Measured Total Depth		True Vertical Depth	BHL From Lease, Unit, or Property Line:

BOTTOM HOLE LOCATION FOR HORIZONTAL HOLE: (LATERALS)

*Per Exhibit LE*

LATERAL #1	SEC 14	TWP 1N	RGE 9E	COUNTY	COAL 57BENL	1047					
Spot Location				SE 1/4	NE 1/4	NW 1/4	SE 1/4	Feet From 1/4 Sec Lines	FSL	FWL	
Depth of Deviation				6000'	Radius of Turn		689	Direction	360-355	Total Length	6968'
Measured Total Depth				14050'	True Vertical Depth		6,758	BHL From Lease, Unit, or Property Line:		570-578	

LATERAL #2

SEC	TWP	RGE	COUNTY	
Spot Location				
1/4	1/4	1/4	1/4	
Depth of Deviation		Radius of Turn	Direction	Total Length
Measured Total Depth		True Vertical Depth	BHL From Lease, Unit, or Property Line:	

LATERAL #3

SEC	TWP	RGE	COUNTY	
Spot Location				
1/4	1/4	1/4	1/4	
Depth of Deviation		Radius of Turn	Direction	Total Length
Measured Total Depth		True Vertical Depth	BHL From Lease, Unit, or Property Line:	

TEST: ☒ INITIAL  
☐ ANNUAL  
☐ RETEST

5/20/19

OKLAHOMA CORPORATION COMMISSION  
Oil & Gas Conservation Division  
Post Office Box 52000  
Oklahoma City, Oklahoma 73152-2000

RECEIVED

JUN 19 2019

Form 1016  
Rev. 2018

BACK PRESSURE TEST FOR NATURAL GAS WELLS

OAC 165:10-17-6

Oklahoma Corporation  
Commission

5,20,19

DATE OF TEST:

6/5/2019

DATE OF 1<sup>ST</sup> SALES: 5/20/2019

Operator		PABLO ENERGY II, LLC		Operator #		21896-0	
Address		1759 WEST 33RD ST, SUITE 120		City		EDMOND	
E-mail		gary.w@pabloenergy.com		Ph		405-513-7121	
Gas Volumes to be Reported to OCC by:		BlueMark		Gas Volume Reporter #		24180	
Producing Zone		WOODFORD 319 W DFD		OTC Lease #		029-225258	
Surface Location		471' FSL, 1028' FEL 1/4 SW 1/4 SE 1/4 SE 1/4		Sec		23	
Zone Location (if different)		2070' FSL, 1604' FEL 1/4 NE 1/4 NW 1/4 SE 1/4		Sec		14	
Field		W. COALGATE		Spacing Size		480	

COMPLETION: ☒ Single ☐ Multiple Zone ☐ Commingled ☐ Recompletion Date of Completion 05/16/19

Total Depth		14050'		Plug Back Depth		14039'		Packer Set Depth		Elevation		650' G.L.		
Csg Size		5 1/2"		WT		20.0		Depth Set		Perfs.		7000'-13940'		
Tbg Size		2 3/8"		WT		4.7		Depth Set		Perfs.				
Prod. Thru		CASING		Res. Temp. F		165 @ 10470		Mean Grd. Temp. F		Atm. Press. PSIA		14.4		
L	10470	H	10470	G <sub>g</sub>	.6949	%CO <sub>2</sub>	.468	%N <sub>2</sub>	1.255	H <sub>2</sub> S(ppm)	Prover	Meter Run	X	
													Taps	FLANGE

SHUT-IN DATA		FLOW DATA						TUBING DATA		CASING DATA		BHP DATA		FLOW (HRS)
		PROVER			DIFF									
PRESS	(HRS)	LINE SIZE	X	ORIFICE SIZE	PRESS	(INCHES)	TEMP	PRESS	TEMP	PRESS	TEMP	PRESS	TEMP	
					(PSIG)	(ROOTS)	(F)	(PSIG)	(F)	(PSIG)	(F)	(PSIG)	(F)	
1129	24	3.068		1.875	122	280	81	865	80	550	80			24 ✓

RATE OF FLOW CALCULATIONS

COEFFICIENT (24 HOUR)	$\sqrt{i_w P_m}$	PRESSURE P <sub>m</sub>	FLOW TEMP. FACTOR F <sub>t</sub>	GRAVITY FACTOR F <sub>g</sub>	SUPER COMPRESS FACTOR F <sub>sp</sub>	RATE OF FLOW (Q) MCFD
18.75	195.4277	136.4	.9804	1.1996	1.0128	4365

P <sub>i</sub>	TEMP. R	T <sub>i</sub>	Z
.2046	540.7	1.4069	.9749

Gas/Liquid Hydrocarbon Ratio	545.57	MCF/BBL
API Gravity of Liquid Hydrocarbons	60	Deg.
Specific Gravity Separator Gas	.6949	
Specific Gravity Flowing Fluid	.7001	
Critical Pressure	666.8	PSIA
Critical Pressure	666.61	PSIA
Critical Temperature	384.3	R
Critical Temperature	385.9	R

P<sub>c</sub> 1143.4 (PSIA) P<sub>c</sub><sup>2</sup> 1307.36

P <sub>w</sub>	P <sub>w</sub> <sup>2</sup>	P <sub>c</sub> <sup>2</sup> - P <sub>w</sub> <sup>2</sup>
564.4	318.55	988.82

[1]  $\frac{P_c^2}{P_c^2 - P_w^2} = 1.3222$  (Not to exceed 5.263)

[2]  $\left[ \frac{P_c^2}{P_c^2 - P_w^2} \right]^n = 1.2679$  WHAOF=Q

$\left[ \frac{P_c^2}{P_c^2 - P_w^2} \right]^n = 5534$

Calculated wellhead open flow		5534		MCFD @ 14.65		Angle of Slope		Slope, n		.850	
Remarks Conducted Test Backwards, Well is being produced through the casing.											
Oil Produced 8 BBLS Water Produced 506 BBLS											
Irregular 480-acre unit: SE Sec. 14 & E2 Sec. 23.											
Approved by Commission:				Conducted by:				Calculated by:			
Clint Sorrells				Thurmond-McGlothlin LLC				Checked by:			
WITNESSED - OCC FIELD STAFF: Y <input checked="" type="checkbox"/> N <input type="checkbox"/>						NAME: Del Lynch			DATE: 06/05/2019		

(over)

DR