

Oklahoma Corporation Commission  
Oil & Gas Conservation Division  
Post Office Box 52000  
Oklahoma City, Oklahoma 73152-2000  
Rule 165: 10-3-25

Form 1002A

API No.: 35085213350000

**Completion Report**

Spud Date: January 29, 2022

OTC Prod. Unit No.: 085-227713-0-0000

Drilling Finished Date: February 07, 2022

1st Prod Date: March 19, 2022

Completion Date: March 01, 2022

**Drill Type:** DIRECTIONAL HOLE

Min Gas Allowable: Yes

Well Name: FALCON 1-22

Purchaser/Measurer: CP ENERGY

Location: LOVE 27 6S 3W  
NE NE NW NW  
189 FNL 1135 FWL of 1/4 SEC  
Latitude: 34.01245477 Longitude: -97.50519279  
Derrick Elevation: 15 Ground Elevation: 832

First Sales Date: 04/04/2022

Operator: COMMAND ENERGY OPERATING LLC 24630

15 W 6TH ST STE 1300  
TULSA, OK 74119

Completion Type		Location Exception		Increased Density	
X	Single Zone	Order No		Order No	
	Multiple Zone	724104		There are no Increased Density records to display.	
	Commingled				

Casing and Cement							
Type	Size	Weight	Grade	Feet	PSI	SAX	Top of CMT
CONDUCTOR	20			65		110	SURFACE
SURFACE	9 5/8	36	J-55	401	160	150	SURFACE
PRODUCTION	5 1/2	17	N-80	7693	1650	240	6192

Liner								
Type	Size	Weight	Grade	Length	PSI	SAX	Top Depth	Bottom Depth
There are no Liner records to display.								

**Total Depth: 7700**

Packer	
Depth	Brand & Type
There are no Packer records to display.	

Plug	
Depth	Plug Type
There are no Plug records to display.	

Initial Test Data
-------------------

Test Date	Formation	Oil BBL/Day	Oil-Gravity (API)	Gas MCF/Day	Gas-Oil Ratio Cu FT/BBL	Water BBL/Day	Pumpin or Flowing	Initial Shut-In Pressure	Choke Size	Flow Tubing Pressure
Apr 01, 2022	SANDERS 6	5	32.8	10	2000	8	PUMPING			

Completion and Test Data by Producing Formation

Formation Name: SANDERS 6		Code: 404SDRS6	Class: OIL
Spacing Orders		Perforated Intervals	
Order No	Unit Size	From	To
169198	80	7512	7518
		7534	7540
		7554	7560
Acid Volumes		Fracture Treatments	
There are no Acid Volume records to display.		68,,082 GALLONS HVFR AND 65,829 POUNDS 16/30 SAND	

Formation	Top
DEESE	5790
WITT	6060
DYKEMAN	6464
TAYLOR	7222
SANDERS 6	7468

Were open hole logs run? No

Date last log run:

Were unusual drilling circumstances encountered? No

Explanation:

Other Remarks
There are no Other Remarks.

Bottom Holes
Sec: 22 TWP: 6S RGE: 3W County: LOVE  NE   NW   SE   SW  1170 FSL   1908 FWL of 1/4 SEC  Depth of Deviation: 0 Radius of Turn: 0 Direction: 0 Total Length: 0  Measured Total Depth: 7700 True Vertical Depth: 7518   End Pt. Location From Release, Unit or Property Line: 588

FOR COMMISSION USE ONLY
<div>Status: Accepted</div> <div>1148062</div>

API NO. 35-085 21335  
OTC PROD. UNIT NO. 227713

Oil and Gas Conservation Division  
P.O. Box 52000  
Oklahoma City, OK 73152-2000  
405-521-2331  
OCCCentralProcessing@OCC.OK.GOV



OKLAHOMA  
Corporation  
Commission

Form 1002A  
Rev. 2021

ORIGINAL  
AMENDED (Reason)

Rule 165:10-3-25

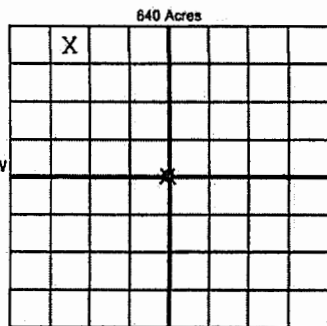
COMPLETION REPORT

TYPE OF DRILLING OPERATION

☐ STRAIGHT HOLE ☒ DIRECTIONAL HOLE ☐ HORIZONTAL HOLE  
☐ SERVICE WELL

If directional or horizontal, see reverse for bottom hole location.

COUNTY	Love	SEC	27	TWP	6S	RGE	3W	SPUD DATE	1/29/2022
LEASE NAME	Falcon	WELL NO.	1-22	DRLG FINISHED DATE	2/7/2022	DATE OF WELL COMPLETION	3/1/2022	1st PROD DATE	3/19/2022
NE 1/4 NE 1/4 NW 1/4 NW 1/4	189'	FWL	1,135'	RECOMP DATE					
ELEVATION Derrick FL	15.0'	Ground	832'	Latitude	34 00' 44.84"N	Longitude	-97 30' 18.69"W		
OPERATOR NAME	Command Energy Operating, LLC	OTC / OCC OPERATOR NO.	24630						
ADDRESS	15 west 6th street	Suite	1300						
CITY	Tulsa	STATE	Ok	ZIP	74119				



COMPLETION TYPE

<input checked="" type="radio"/> SINGLE ZONE	
<input type="radio"/> MULTIPLE ZONE	
Application Date	
COMMINLED	
Application Date	
LOCATION EXCEPTION ORDER NO.	724104 FO
MULTIUNIT ORDER NO.	X
INCREASED DENSITY ORDER NO.	X

CASING & CEMENT (Attach Form 1002C)

TYPE	SIZE	WEIGHT	GRADE	FEET	PSI	SAX	TOP OF CMT
CONDUCTOR	20"			65'		110	Surface
SURFACE	9 5/8"	36#	J-55	401	160	150	Surface
INTERMEDIATE							
PRODUCTION	5 1/2"	17#	N-80	7,693'	1,650	240	6,192'
LINER							

PACKER @ BRAND & TYPE PLUG @ TYPE PLUG @ TYPE PLUG @ TYPE TOTAL DEPTH 7,700'

COMPLETION & TEST DATA BY PRODUCING FORMATION

4045DRSG

FORMATION	6th Sanders						
SPACING & SPACING ORDER NUMBER	(80) 169198						
CLASS: Oil, Gas, Dry, Int, Deep, Comm Disp, Svc	Oil						
PERFORATED INTERVALS	7,512' - 7,518'						
	7,534' - 7,540'						
	7,554' - 7,560'						
ACID/VOLUME	X						
FRACTURE TREATMENT (Fluids/Prop Amounts)	68,082 gals HVFR & 65,829# 16/30 sd						

RECEIVED  
APR 05 2022  
OKLAHOMA CORPORATION COMMISSION

☒ Min Gas Allowable (165:10-17-7)  
OR  
☐ Oil Allowable (165:10-13-3)

Purchaser/Measurer  
First Sales Date

CP Energy  
4/4/2022

INITIAL TEST DATA

INITIAL TEST DATE	4/1/2022						
OIL-BBL/DAY	5						
OIL-GRAVITY (API)	32.8						
GAS-MCF/DAY	10						
GAS-OIL RATIO CU FT/BBL	2000						
WATER-BBL/DAY	8						
PUMPING OR FLOWING	Pumping						
INITIAL SHUT-IN PRESSURE	X						
CHOKE SIZE	X						
FLOW TUBING PRESSURE	X						

A record of the formations drilled through, and pertinent remarks are presented on the reverse. I declare that I have knowledge of the contents of this report and am authorized by my organization to make this report, which was prepared by me or under my supervision and direction, with the data and facts stated herein to be true, correct, and complete to the best of my knowledge and belief.

*James Lollar*  
SIGNATURE  
15 west 6th street Suite 1300  
ADDRESS  
Tulsa  
CITY  
Ok  
STATE  
74119  
ZIP  
DATE  
539-867-1887  
PHONE NUMBER  
jllollar@cetulsa.com  
EMAIL ADDRESS

PLEASE TYPE OR USE BLACK INK ONLY  
FORMATION RECORD

Give formation names and tops, if available, or descriptions and thickness of formations drilled through. Show intervals cored or drillstem tested.

NAMES OF FORMATIONS	TOP
Deese	5,790'
Witt	6,060'
Dykeman	6,464'
Taylor	7,222'
6th Sanders	7,468'

LEASE NAME Falcon WELL NO. 1-22

FOR COMMISSION USE ONLY	
ITD on file <input type="checkbox"/> YES <input type="checkbox"/> NO	
APPROVED <input type="checkbox"/> DISAPPROVED <input type="checkbox"/>	2) Reject Codes

Were open hole logs run?	<input type="radio"/> yes <input checked="" type="radio"/> no
Date Last log was run	
Was CO <sub>2</sub> encountered?	<input type="radio"/> yes <input checked="" type="radio"/> no at what depths?
Was H <sub>2</sub> S encountered?	<input type="radio"/> yes <input checked="" type="radio"/> no at what depths?
Were unusual drilling circumstances encountered?	<input type="radio"/> yes <input checked="" type="radio"/> no
If yes, briefly explain below	

Other remarks:

---



---



---



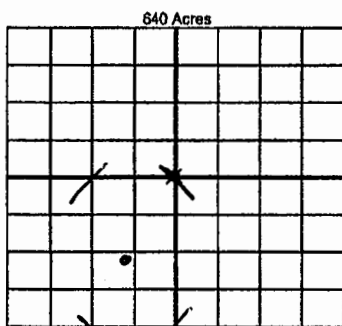
---



---



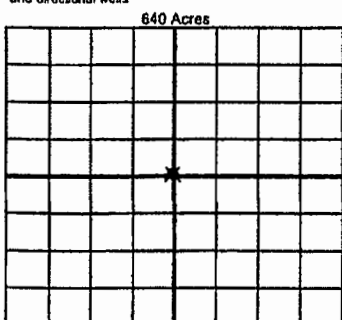
---



If more than three drainholes are proposed, attach a separate sheet indicating the necessary information.

Direction must be stated in degrees azimuth. Please note, the horizontal drainhole and its end point must be located within the boundaries of the lease or spacing unit.

Directional surveys are required for all drainholes and directional wells



BOTTOM HOLE LOCATION FOR DIRECTIONAL HOLE

SEC	TWP	RGE	COUNTY	Love
22	6S	3W		
NE 1/4	NW 1/4	SE 1/4	SW 1/4	
Feet From 1/4 Sec Lines				FSL <input type="checkbox"/> 1170 <input type="checkbox"/> 1902
Measured Total Depth		True Vertical Depth		BHL From Lease, Unit, or Property Line:
7,700'		7,518'		588 - 640 FWL E 1/2 of SW 1/4

BOTTOM HOLE LOCATION FOR HORIZONTAL HOLE: (LATERALS)

LATERAL #1				
SEC	TWP	RGE	COUNTY	
1/4	1/4	1/4	1/4	Feet From 1/4 Sec Lines
Depth of Deviation		Radius of Turn		Direction
Measured Total Depth		True Vertical Depth		Total Length
BHL From Lease, Unit, or Property Line:				

LATERAL #2				
SEC	TWP	RGE	COUNTY	
1/4	1/4	1/4	1/4	Feet From 1/4 Sec Lines
Depth of Deviation		Radius of Turn		Direction
Measured Total Depth		True Vertical Depth		Total Length
BHL From Lease, Unit, or Property Line:				

LATERAL #3				
SEC	TWP	RGE	COUNTY	
1/4	1/4	1/4	1/4	Feet From 1/4 Sec Lines
Depth of Deviation		Radius of Turn		Direction
Measured Total Depth		True Vertical Depth		Total Length
BHL From Lease, Unit, or Property Line:				