

Oklahoma Corporation Commission
Oil & Gas Conservation Division
Post Office Box 52000
Oklahoma City, Oklahoma 73152-2000
Rule 165: 10-3-25

Form 1002A

API No.: 35029214020000

Completion Report

Spud Date: February 26, 2021

OTC Prod. Unit No.: 029-227245-0-0000

Drilling Finished Date: May 03, 2021

1st Prod Date: June 17, 2021

Completion Date: June 05, 2021

Drill Type: HORIZONTAL HOLE

Min Gas Allowable: Yes

Well Name: HB #3-14/11H

Purchaser/Measurer: SOUTHWEST ENERGY LP

Location: COAL 23 2N 9E
NE SW NE NW
727 FNL 1847 FWL of 1/4 SEC
Latitude: 34.63410534 Longitude: -96.33048313
Derrick Elevation: 795 Ground Elevation: 770

First Sales Date: 06/17/2021

Operator: CANYON CREEK ENERGY ARKOMA LLC 24379

615 EAST 4TH STREET
TULSA, OK 74120-3017

Completion Type		Location Exception		Increased Density	
X	Single Zone	Order No		Order No	
	Multiple Zone	720820		717623	
	Commingled			717673	

Casing and Cement							
Type	Size	Weight	Grade	Feet	PSI	SAX	Top of CMT
CONDUCTOR	20	94	H-40	40			
SURFACE	9 5/8	36	J-55	504		190	SURFACE
PRODUCTION	5 1/2	20	P-110	16664		2145	5105

Liner								
Type	Size	Weight	Grade	Length	PSI	SAX	Top Depth	Bottom Depth
There are no Liner records to display.								

Total Depth: 16690

Packer	
Depth	Brand & Type
There are no Packer records to display.	

Plug	
Depth	Plug Type
There are no Plug records to display.	

Initial Test Data

Test Date	Formation	Oil BBL/Day	Oil-Gravity (API)	Gas MCF/Day	Gas-Oil Ratio Cu FT/BBL	Water BBL/Day	Pumpin or Flowing	Initial Shut-In Pressure	Choke Size	Flow Tubing Pressure
Jul 02, 2022	ALL ZONES PRODUCING	67	45	3738	55791	4047	FLOWING	220	F.O.	225

Completion and Test Data by Producing Formation

Formation Name: WOODFORD

Code: 319WDFD

Class: GAS

Spacing Orders

Order No	Unit Size
537141	640
542037	640
720819	MULTIUNIT

Perforated Intervals

From	To
7248	15469
15536	15701

Acid Volumes

There are no Acid Volume records to display.

Fracture Treatments

329,193 BARRELS, 20,429,280 POUNDS

Formation Name: MISSISSIPPIAN

Code: 359MSSP

Class: GAS

Spacing Orders

Order No	Unit Size
537141	640
542037	640
720819	MULTIUNIT

Perforated Intervals

From	To
15469	15536
15701	16406

Acid Volumes

There are no Acid Volume records to display.

Fracture Treatments

FRAC'D WITH WOODFORD

Formation	Top
WOODFORD	6522

Were open hole logs run? No

Date last log run:

Were unusual drilling circumstances encountered? No

Explanation:

Other Remarks

There are no Other Remarks.

Lateral Holes

Sec: 11 TWP: 2N RGE: 9E County: COAL

SW NE NE NW

569 FNL 2090 FWL of 1/4 SEC

Depth of Deviation: 5754 Radius of Turn: 1404 Direction: 3 Total Length: 9532

Measured Total Depth: 16690 True Vertical Depth: 6911 End Pt. Location From Release, Unit or Property Line: 569

FOR COMMISSION USE ONLY

Status: Accepted

1148047

API NO. 029 21402 X
OTC PROD. UNIT NO. 029-227245

PLEASE TYPE OR USE BLACK INK ONLY
NOTE:

Attach copy of original 1002A
if recompletion or reentry.

OKLAHOMA CORPORATION COMMISSION
Oil & Gas Conservation Division
Post Office Box 52000
Oklahoma City, Oklahoma 73152-2000
Rule 165:10-3-25

Form 1002A
Rev. 2009

☒ ORIGINAL
☐ AMENDED (Reason)

COMPLETION REPORT

TYPE OF DRILLING OPERATION

☐ STRAIGHT HOLE ☐ DIRECTIONAL HOLE ☒ HORIZONTAL HOLE
☐ SERVICE WELL

If directional or horizontal, see reverse for bottom hole location.

COUNTY	Coal	SEC	23	TWP	2N	RGE	9E	SPUD DATE	2/26/2021
LEASE NAME	HB							DRLG FINISHED DATE	5/3/2021
NE 1/4 SW 1/4 NE 1/4 NW 1/4	FNL OF 224 FWL OF 730							DATE OF WELL COMPLETION	6/5/2021
ELEVATION	795	Ground	770	Latitude (if known)				1st PROD DATE	6/17/2021
OPERATOR NAME	Canyon Creek Energy							RECOMP DATE	
ADDRESS	615 E. 4th Street							OTC/OCC OPERATOR NO.	24379-0
CITY	Tulsa			STATE	OK		ZIP	74120	

640 Acres

LOCATE WELL

COMPLETION TYPE

<input checked="" type="checkbox"/> SINGLE ZONE
<input type="checkbox"/> MULTIPLE ZONE
Application Date
<input type="checkbox"/> COMINGLED
Application Date
LOCATION
EXCEPTION ORDER
INCREASED DENSITY
ORDER NO.

CASING & CEMENT (Form 1002C must be attached)

TYPE	SIZE	WEIGHT	GRADE	FEET	PSI	SAX	TOP OF CMT
CONDUCTOR	20"	94#	H-40	40			
SURFACE	9 5/8"	36#	J55	4000 504		190	Surface
INTERMEDIATE							
PRODUCTION	5 1/2"	20#	P110	16,664		2145	5105
LINER							
						TOTAL DEPTH	16,690

PACKER @ BRAND & TYPE PLUG @ TYPE PLUG @ TYPE
PACKER @ BRAND & TYPE PLUG @ TYPE PLUG @ TYPE

COMPLETION & TEST DATA BY PRODUCING FORMATION

FORMATION	Woodford	Mississippian	Woodford	Mississippian	
SPACING & SPACING ORDER NUMBER	640 537141/542037 -- 640		720819 FO Multumit		Need Report to Frac Prodc
CLASS: Oil, Gas, Dry, Inj, Disp, Comm Disp, Svc	Gas				RECEIVED
PERFORATED INTERVALS	7248-15469	15469-15536	15536-15701	15701-16406	APR 14 2022
ACID/VOLUME					OKLAHOMA CORPORATION COMMISSION
FRACTURE TREATMENT (Fluids/Prop Amounts)	329,193 bbls				
	20,429,280 #s				

☒ Min Gas Allowable (165:10-17-7)
OR
☐ Oil Allowable (165:10-13-3)

Gas Purchaser/Measurer
First Sales Date

Southwest Energy LP
6/17/2021

INITIAL TEST DATA

INITIAL TEST DATE	7/2/2022				
OIL-BBL/DAY	67				
OIL-GRAVITY (API)	45				
GAS-MCF/DAY	3738				
GAS-OIL RATIO CU FT/BBL	65.9 55791				
WATER-BBL/DAY	4047				
PUMPING OR FLOWING	Flowing				
INITIAL SHUT-IN PRESSURE	220				
CHOKE SIZE	F.O.				
FLOW TUBING PRESSURE	225				

A record of the formations drilled through, and pertinent remarks are presented on the reverse. I declare that I have knowledge of the contents of this report and am authorized by my organization to make this report, which was prepared by me or under my supervision and direction, with the data and facts stated herein to be true, correct, and complete to the best of my knowledge and belief.

SIGNATURE	C Daniel Jacobs	DATE	4/12/2022	PHONE NUMBER	(918) 561-6737
615 E. 4th Street	Tulsa	OK	74120	djacobs@cceok.com	
ADDRESS	CITY	STATE	ZIP	EMAIL ADDRESS	

PLEASE TYPE OR USE BLACK INK ONLY
FORMATION RECORD

Give formation names and tops, if available, or descriptions and thickness of formations drilled through. Show intervals cored or drillstem tested.

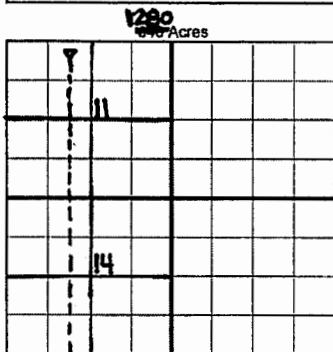
NAMES OF FORMATIONS	TOP
Woodford	6,522

LEASE NAME HB WELL NO. 3-14/11H

FOR COMMISSION USE ONLY	
ITD on file <input type="checkbox"/> YES <input type="checkbox"/> NO	
APPROVED _____	DISAPPROVED _____
2) Reject Codes	

Were open hole logs run?	yes	<input checked="" type="checkbox"/> no
Date Last log was run	_____	
Was CO ₂ encountered?	yes	<input checked="" type="checkbox"/> no at what depths? _____
Was H ₂ S encountered?	yes	<input checked="" type="checkbox"/> no at what depths? _____
Were unusual drilling circumstances encountered?	yes	<input checked="" type="checkbox"/> no
If yes, briefly explain below		

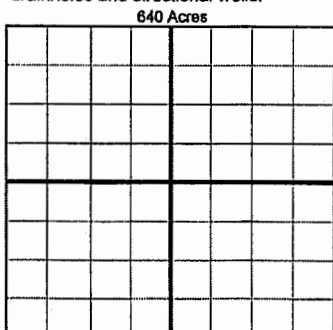
Other remarks:



If more than three drainholes are proposed, attach a separate sheet indicating the necessary information.

Direction must be stated in degrees azimuth. Please note, the horizontal drainhole and its end point must be located within the boundaries of the lease or spacing unit.

Directional surveys are required for all drainholes and directional wells.



BOTTOM HOLE LOCATION FOR DIRECTIONAL HOLE

SEC	TWP	RGE	COUNTY
Spot Location	1/4	1/4	1/4
Measured Total Depth	True Vertical Depth		BHL From Lease, Unit, or Property Line:

BOTTOM HOLE LOCATION FOR HORIZONTAL HOLE: (LATERALS)

Per Exhibit C

SEC	TWP	RGE	COUNTY
11	2N	9E	Coal
Spot Location	SW 1/4	NE 1/4	NW 1/4
Depth of Deviation	5,754	Radius of Turn	1404
Measured Total Depth	16,690	True Vertical Depth	6,911
Direction		3 180	Total Length
BHL From Lease, Unit, or Property Line:		569'FNL, 2090'FWL	

LATERAL #2

SEC	TWP	RGE	COUNTY
Spot Location	1/4	1/4	1/4
Depth of Deviation	Radius of Turn		Direction
Measured Total Depth	True Vertical Depth		BHL From Lease, Unit, or Property Line:

LATERAL #3

SEC	TWP	RGE	COUNTY
Spot Location	1/4	1/4	1/4
Depth of Deviation	Radius of Turn		Direction
Measured Total Depth	True Vertical Depth		BHL From Lease, Unit, or Property Line: