

Oklahoma Corporation Commission  
Oil & Gas Conservation Division  
Post Office Box 52000  
Oklahoma City, Oklahoma 73152-2000  
Rule 165: 10-3-25

Form 1002A

API No.: 35045203570001

**Completion Report**

Spud Date: March 06, 1974

OTC Prod. Unit No.: 045-046844-0-0000

Drilling Finished Date: March 24, 1974

**Amended**

1st Prod Date: April 30, 1974

Amend Reason: RECOMPLETION

Completion Date: April 30, 1974

Recomplete Date: December 08, 2021

**Drill Type: STRAIGHT HOLE**

Min Gas Allowable: Yes

Well Name: O'HAIR 1

Purchaser/Measurer: N/A

Location: ELLIS 1 24N 25W  
C SW SW  
660 FSL 660 FWL of 1/4 SEC  
Latitude: 36.5815568 Longitude: -99.8352718  
Derrick Elevation: 2297 Ground Elevation: 2287

First Sales Date:

Operator: LATIGO OIL AND GAS INC 10027  
PO BOX 1208  
5815 OKLAHOMA AVE  
WOODWARD, OK 73802-1208

Completion Type		Location Exception		Increased Density	
X	Single Zone	Order No		Order No	
	Multiple Zone	There are no Location Exception records to display.		There are no Increased Density records to display.	
	Commingled				

Casing and Cement							
Type	Size	Weight	Grade	Feet	PSI	SAX	Top of CMT
SURFACE	8 5/8	32		789		350	SURFACE
PRODUCTION	5 1/2	15 / 17		8182		225	

Liner								
Type	Size	Weight	Grade	Length	PSI	SAX	Top Depth	Bottom Depth
There are no Liner records to display.								

**Total Depth: 8210**

Packer	
Depth	Brand & Type
There are no Packer records to display.	

Plug	
Depth	Plug Type
6760	BP
7900	PBTD

Initial Test Data
-------------------

Test Date	Formation	Oil BBL/Day	Oil-Gravity (API)	Gas MCF/Day	Gas-Oil Ratio Cu FT/BBL	Water BBL/Day	Pumpin or Flowing	Initial Shut-In Pressure	Choke Size	Flow Tubing Pressure
Feb 21, 2022	OSWEGO	1				1	PUMPING			

<b>Completion and Test Data by Producing Formation</b>					
Formation Name: OSWEGO		Code: 404OSWG		Class: OIL	
<b>Spacing Orders</b>		<b>Perforated Intervals</b>			
<b>Order No</b>	<b>Unit Size</b>	<b>From</b>		<b>To</b>	
UNSPACED		6691		6699	
<b>Acid Volumes</b>		<b>Fracture Treatments</b>			
5,000 GALLONS 15% HCL		N/A			

Formation	Top
OSWEGO	6600

Were open hole logs run? Yes

Date last log run: March 24, 1974

Were unusual drilling circumstances encountered? No

Explanation:

<b>Other Remarks</b>
SET BP OVER MORROW. PRODUCE OSWEGO ONLY.

<b>FOR COMMISSION USE ONLY</b>	
Status: Accepted	1148055

RECEIVED

APR 28 2022 Form 1002A Rev. 2021

API NO. 35-04520357  
 OTC PROD. UNIT NO. 045046844

Oil and Gas Conservation Division  
 P.O. Box 52000  
 Oklahoma City, OK 73152-2000  
 405-521-2331  
 OCCentralProcessing@OCC.OK.GOV



**OKLAHOMA**  
 Corporation  
 Commission

OKLAHOMA CORPORATION  
 COMMISSION

8 ORIGINAL AMENDED (Reason) \_\_\_\_\_ Recompletion \_\_\_\_\_ Rule 185:10-3-25

COMPLETION REPORT

TYPE OF DRILLING OPERATION

☒ STRAIGHT HOLE ☐ DIRECTIONAL HOLE ☐ HORIZONTAL HOLE  
☐ SERVICE WELL

If directional or horizontal, see reverse for bottom hole location.

COUNTY Ellis SEC 01 TWP 24N RGE 25W

LEASE NAME O'Hair WELL NO. 1

1/4 C 1/4 SW 1/4 SW 1/4 FSL 660 FWL 660

ELEVATION 2297 Ground 2287 Latitude 36.581709 Longitude -99.83614

OPERATOR NAME Latigo Oil & Gas, Inc. OTC / OCC OPERATOR NO. 10027

ADDRESS PO Box 1208

CITY Woodward STATE OK ZIP 73802-1208

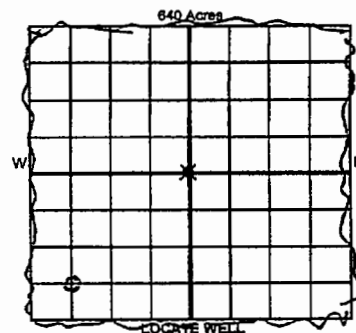
SPUD DATE 03/06/1974

DRLG FINISHED DATE 03/24/1974

DATE OF WELL COMPLETION 04/30/1974

1st PROD DATE 04/30/1974

RECOMP DATE 12/08/2021



COMPLETION TYPE

☒ SINGLE ZONE  
☐ MULTIPLE ZONE  
☐ COMMINGLED  
 LOCATION EXCEPTION ORDER NO.  
 MULTUNIT ORDER NO.  
 INCREASED DENSITY ORDER NO.

CASING & CEMENT (Attach Form 1002C)

TYPE	SIZE	WEIGHT	GRADE	FEET	PSI	SAX	TOP OF CMT
CONDUCTOR							
SURFACE	8-5/8"	32		789		350	SURFACE
INTERMEDIATE							
PRODUCTION	5-1/2"	15/17		8182		225	
LINER							

PACKER @ \_\_\_\_\_ BRAND & TYPE \_\_\_\_\_ PLUG @ 6760' TYPE BP PLUG @ \_\_\_\_\_ TYPE \_\_\_\_\_ TOTAL DEPTH 8210  
 PACKER @ \_\_\_\_\_ BRAND & TYPE \_\_\_\_\_ PLUG @ 7900 TYPE PBD PLUG @ \_\_\_\_\_ TYPE \_\_\_\_\_

COMPLETION & TEST DATA BY PRODUCING FORMATION

FORMATION	Oswego					No Frac
SPACING & SPACING ORDER NUMBER	Unspaced					
CLASS: Oil Gas, Dry, Inj. Disp, Comm Disp, Svc	Oil					
PERFORATED INTERVALS	6691'-6699'					
ACID/VOLUME	5000 Gal 15% HCL					
FRACTURE TREATMENT (Fluids/Prop Amounts)	NA					

Min Gas Allowable (185:10-17-7)



OR

Oil Allowable (185:10-13-3)

Purchaser/Measurer

NA

First Sales Date

NA

INITIAL TEST DATA

INITIAL TEST DATE	2/21/2022					
OIL-BBL/DAY	1					
OIL-GRAVITY (API)						
GAS-MCF/DAY	0					
GAS-OIL RATIO CU FT/BBL	0					
WATER-BBL/DAY	1					
PUMPING OR FLOWING	Pumping					
INITIAL SHUT-IN PRESSURE	0					
CHOKE SIZE	NA					
FLOW TUBING PRESSURE	NA					

A record of the formations drilled through, and pertinent remarks are presented on the reverse. I declare that I have knowledge of the contents of this report and am authorized by my organization to make this report, which was prepared by me or under my supervision and direction, with the data and facts stated herein to be true, correct, and complete to the best of my knowledge and belief.

SIGNATURE  
 PO Box 1208

Woodward CITY STATE OK ZIP 73802-1208

4/28/2022 DATE  
 580-256-1416 PHONE NUMBER  
 RyanB@latigooil.com EMAIL ADDRESS

PLEASE TYPE OR USE BLACK INK ONLY  
FORMATION RECORD

Give formation names and tops, if available, or descriptions and thickness of formations drilled through. Show intervals cored or drillstem tested.

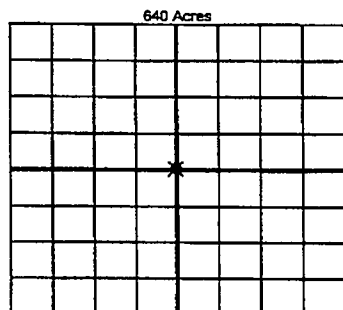
NAMES OF FORMATIONS	TOP
Oswego	6600

LEASE NAME O'Hair WELL NO. 1

FOR COMMISSION USE ONLY	
ITD on file	<input type="checkbox"/> YES <input type="checkbox"/> NO
APPROVED	DISAPPROVED
2) Reject Codes	

Were open hole logs run?	<input checked="" type="radio"/> yes <input type="radio"/> no
Date last log was run	3-24-74
Was CO <sub>2</sub> encountered?	<input type="radio"/> yes <input checked="" type="radio"/> no at what depths? <u>                    </u>
Was H <sub>2</sub> S encountered?	<input type="radio"/> yes <input checked="" type="radio"/> no at what depths? <u>                    </u>
Were unusual drilling circumstances encountered?	<input type="radio"/> yes <input checked="" type="radio"/> no
If yes, briefly explain below	

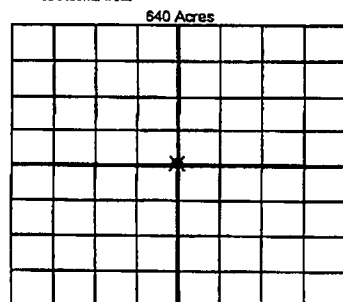
Other remarks: SET BP OVER MORROW. PRODUCE OSWEGO ONLY



If more than three drainholes are proposed, attach a separate sheet indicating the necessary information.

Direction must be stated in degrees azimuth. Please note, the horizontal drainhole and its end point must be located within the boundaries of the lease or spacing unit.

Directional surveys are required for all drainholes and directional wells



BOTTOM HOLE LOCATION FOR DIRECTIONAL HOLE

SEC	TWP	RGE	COUNTY
1/4	1/4	1/4	1/4
Measured Total Depth		True Vertical Depth	Feet From 1/4 Sec Lines BHL From Lease, Unit, or Property Line:

BOTTOM HOLE LOCATION FOR HORIZONTAL HOLE: (LATERALS)

LATERAL #1

SEC	TWP	RGE	COUNTY
1/4	1/4	1/4	1/4
Depth of Deviation		Radius of Turn	Direction Total Length
Measured Total Depth		True Vertical Depth	BHL From Lease, Unit, or Property Line:

LATERAL #2

SEC	TWP	RGE	COUNTY
1/4	1/4	1/4	1/4
Depth of Deviation		Radius of Turn	Direction Total Length
Measured Total Depth		True Vertical Depth	BHL From Lease, Unit, or Property Line:

LATERAL #3

SEC	TWP	RGE	COUNTY
1/4	1/4	1/4	1/4
Depth of Deviation		Radius of Turn	Direction Total Length
Measured Total Depth		True Vertical Depth	BHL From Lease, Unit, or Property Line: