

Oklahoma Corporation Commission
Oil & Gas Conservation Division
Post Office Box 52000
Oklahoma City, Oklahoma 73152-2000
Rule 165: 10-3-25

Form 1002A

API No.: 35087222120000

Completion Report

Spud Date: January 27, 2019

OTC Prod. Unit No.: 087-225690-0-0000

Drilling Finished Date: March 15, 2019

1st Prod Date: June 03, 2019

Completion Date: June 03, 2019

Drill Type: HORIZONTAL HOLE

Min Gas Allowable: Yes

Well Name: TERRI 1621 6H

Purchaser/Measurer: ENABLE GATHERING &
PROCESSING

First Sales Date: 06/03/2019

Location: MCCLAIN 16 8N 4W
NE NE NW NE
276 FNL 1603 FEL of 1/4 SEC
Latitude: 35.174147443 Longitude: -97.622719208
Derrick Elevation: 0 Ground Elevation: 1170

Operator: EOG RESOURCES INC 16231

3817 NW EXPRESSWAY STE 500
OKLAHOMA CITY, OK 73112-1483

Completion Type		Location Exception		Increased Density	
X	Single Zone	Order No		Order No	
	Multiple Zone	695444		692480	
	Commingled			692481	

Casing and Cement							
Type	Size	Weight	Grade	Feet	PSI	SAX	Top of CMT
SURFACE	9 5/8	36	J-55	1047		485	SURFACE
PRODUCTION	5 1/2	20	P-110	19919		2630	6886

Liner								
Type	Size	Weight	Grade	Length	PSI	SAX	Top Depth	Bottom Depth
There are no Liner records to display.								

Total Depth: 19930

Packer	
Depth	Brand & Type
There are no Packer records to display.	

Plug	
Depth	Plug Type
There are no Plug records to display.	

Initial Test Data

Test Date	Formation	Oil BBL/Day	Oil-Gravity (API)	Gas MCF/Day	Gas-Oil Ratio Cu FT/BBL	Water BBL/Day	Pumpin or Flowing	Initial Shut-In Pressure	Choke Size	Flow Tubing Pressure
Jun 06, 2019	WOODFORD	136	40	298	2192	6936	FLOWING	1900	128	365

Completion and Test Data by Producing Formation	
Formation Name: WOODFORD	Code: 319WDFD
Class: OIL	

Spacing Orders	
Order No	Unit Size
601388	640
628255	640
671519	640
672465	640-NPT
695619	MULTIUNIT

Perforated Intervals	
From	To
9726	19848

Acid Volumes
2,200 GALLONS 7.5% HCL TOTAL ACID

Fracture Treatments
15,443,022 GALLONS TOTAL FLUID, 23,700,090 POUNDS TOTAL PROPPANT

Formation	Top
WOODFORD	9560

Were open hole logs run? No

Date last log run:

Were unusual drilling circumstances encountered? No

Explanation:

Other Remarks
OCC - THIS DOCUMENT IS ACCEPTED BASED ON THE DATA SUBMITTED NEITHER THE FINAL LOCATION EXCEPTION NOR THE FINAL MULTIUNIT ORDERS HAVE BEEN SUBMITTED.

Lateral Holes
Sec: 21 TWP: 8N RGE: 4W County: MCCLAIN SW SE SW SE 207 FSL 1926 FEL of 1/4 SEC Depth of Deviation: 9079 Radius of Turn: 681 Direction: 173 Total Length: 10170 Measured Total Depth: 19930 True Vertical Depth: 9641 End Pt. Location From Release, Unit or Property Line: 207

FOR COMMISSION USE ONLY	
Status: Accepted	1143496

API NO. 087-22212
OTC PROD. UNIT NO. 087-225690

PLEASE TYPE OR USE BLACK INK ONLY
NOTE:

Attach copy of original 1002A
if recompletion or reentry.

OKLAHOMA CORPORATION COMMISSION
Oil & Gas Conservation Division
Post Office Box 52000
Oklahoma City, Oklahoma 73152-2000
Rule 165:10-3-25

RECEIVED

Form 1002A
Rev. 2009

JUL 02 2019

OKLAHOMA CORPORATION
COMMISSION

☒ ORIGINAL
☐ AMENDED (Reason) _____

COMPLETION REPORT

TYPE OF DRILLING OPERATION

☐ STRAIGHT HOLE ☐ DIRECTIONAL HOLE ☒ HORIZONTAL HOLE
☐ SERVICE WELL

If directional or horizontal, see reverse for bottom hole location.

COUNTY	MCCLAIN	SEC	16	TWP	8N	RGE	4W	SPUD DATE	1/27/19
LEASE NAME	TERRI 1621			WELL NO.	6H	DATE OF WELL COMPLETION	6/3/19	DRLG FINISHED DATE	3/15/19
NE 1/4 NE 1/4 NW 1/4 NE 1/4	FNL OF 1/4 SEC 276			FEL OF 1/4 SEC	1,603	1st PROD DATE	6/3/19	RECOMP DATE	
ELEVATION N Derrick	Ground	1,170	Latitude (if known)	35.174147443			Longitude (if known)	-97.622719208	
OPERATOR NAME	EOG Resources, Inc.				OTC/OCC OPERATOR NO.	16231			
ADDRESS	3817 NW Expressway, Suite 500								
CITY	Oklahoma City	STATE	OK	ZIP	73112				

640 Acres									
X									
W E									
LOCATE WELL									

COMPLETION TYPE

<input checked="" type="checkbox"/> SINGLE ZONE	
<input type="checkbox"/> MULTIPLE ZONE	
Application Date	
<input type="checkbox"/> COMMINGLED	
Application Date	
LOCATION EXCEPTION ORDER	695444 I.O.
INCREASED DENSITY ORDER NO.	692480, 692481

CASING & CEMENT (Form 1002C must be attached)

TYPE	SIZE	WEIGHT	GRADE	FEET	PSI	SAX	TOP OF CMT
CONDUCTOR							
SURFACE	9 5/8	36	J-55	1,047		485	SURFACE
INTERMEDIATE							
PRODUCTION *	5 1/2	20	P-110	19,919		2,630	6,886
LINER							
						TOTAL DEPTH	19,930

PACKER @ _____ BRAND & TYPE _____ PLUG @ _____ TYPE _____ PLUG @ _____ TYPE _____
PACKER @ _____ BRAND & TYPE _____ PLUG @ _____ TYPE _____ PLUG @ _____ TYPE _____

COMPLETION & TEST DATA BY PRODUCING FORMATION

FORMATION	WOODFORD								
SPACING & SPACING ORDER NUMBER	640/601388, 628255, 671519, 672465 - MU - 695619	I.O.							Reported to FracFocus
CLASS: Oil, Gas, Dry, Inj, Disp, Comm Disp, Svc	oil								
PERFORATED INTERVALS	9,726 - 19,848								
ACID/VOLUME	TOTAL ACID - 2,200 GALS 7.5% HCL								
FRACTURE TREATMENT (Fluids/Prop Amounts)	TOTAL FLUID - 15,443,022 GALS TOTAL PROP - 23,700,090 LBS								

Min Gas Allowable (165:10-17-7)

Gas Purchaser/Measurer

Enable Gathering & Processing

☒

OR

First Sales Date

6/3/2019

INITIAL TEST DATA

INITIAL TEST DATE	6/6/2019						
OIL-BBL/DAY	136						
OIL-GRAVITY (API)	40						
GAS-MCF/DAY	298						
GAS-OIL RATIO CU FT/BBL	2,192						
WATER-BBL/DAY	6,936						
PUMPING OR FLOWING	FLOWING						
INITIAL SHUT-IN PRESSURE	1,900						
CHOKE SIZE	128						
FLOW TUBING PRESSURE	365						

AS SUBMITTED

A record of the formations drilled through, and pertinent remarks are presented on the reverse. I declare that I have knowledge of the contents of this report and am authorized by my organization to make this report, which was prepared by me or under my supervision and direction, with the data and facts stated herein to be true, correct, and complete to the best of my knowledge and belief.

Joni Reeder
SIGNATURE NAME (PRINT OR TYPE) DATE PHONE NUMBER
3817 NW Expressway, Suite 500 Oklahoma City OK 73112 7/2/19 405-246-3100
ADDRESS CITY STATE ZIP EMAIL ADDRESS
joni_reeder@eogresources.com

PLEASE TYPE OR USE BLACK INK ONLY
FORMATION RECORD

Give formation names and tops, if available, or descriptions and thickness of formations drilled through. Show intervals cored or drillstem tested.

LEASE NAME

TERRI 1621

WELL NO.

6H

NAMES OF FORMATIONS	TOP
WOODFORD MD	9,560

FOR COMMISSION USE ONLY

ITD on file ☐ YES ☐ NO

APPROVED _____ DISAPPROVED _____

2) Reject Codes

Were open hole logs run? _____ yes ☒ no

Date Last log was run _____ N/A

Was CO₂ encountered? _____ yes ☒ no at what depths? _____

Was H₂S encountered? _____ yes ☒ no at what depths? _____

Were unusual drilling circumstances encountered? _____ yes ☒ no

If yes, briefly explain below:

Other remarks:

640 Acres

If more than three drainholes are proposed, attach a separate sheet indicating the necessary information.

Direction must be stated in degrees azimuth.
Please note, the horizontal drainhole and its end point must be located within the boundaries of the lease or spacing unit.

Directional surveys are required for all drainholes and directional wells.

640 Acres

BOTTOM HOLE LOCATION FOR DIRECTIONAL HOLE

SEC	TWP	RGE	COUNTY
Spot Location	1/4	1/4	1/4
Measured Total Depth	True Vertical Depth	BHL From Lease, Unit, or Property Line:	

BOTTOM HOLE LOCATION FOR HORIZONTAL HOLE: (LATERALS)

LATERAL #1	SEC	TWP	RGE	COUNTY
SW 1/4 SE 1/4 SW 1/4 SE 1/4	21	8N	4W	MCCLAIN
Spot Location	SW 1/4 SE 1/4 SW 1/4 SE 1/4	Feet From 1/4 Sec Lines	FSL 207	FEL 1,926
Depth of Deviation	9,079	Radius of Turn	681	Direction 173
Measured Total Depth	19,930	True Vertical Depth	9,641	Total Length 10,170
		BHL From Lease, Unit, or Property Line:	207	

LATERAL #2

SEC	TWP	RGE	COUNTY
Spot Location	1/4	1/4	1/4
Depth of Deviation	Radius of Turn	Direction	Total Length
Measured Total Depth	True Vertical Depth	BHL From Lease, Unit, or Property Line:	

LATERAL #3

SEC	TWP	RGE	COUNTY
Spot Location	1/4	1/4	1/4
Depth of Deviation	Radius of Turn	Direction	Total Length
Measured Total Depth	True Vertical Depth	BHL From Lease, Unit, or Property Line:	

Image @ 1002A

TOPOGRAPHIC LAND SURVEYORS OF OKLAHOMA
13800 WIRELESS WAY, OKLA. CITY, OKLA. 73134 • LOCAL (405) 843-4847 • OUT OF STATE (800) 654-3219
Certificate of Authorization No. 1293 LS

MCCLAIN County, Oklahoma
276° FNL-1603° FEL Section 16 Township 6N Range 4W I.M.

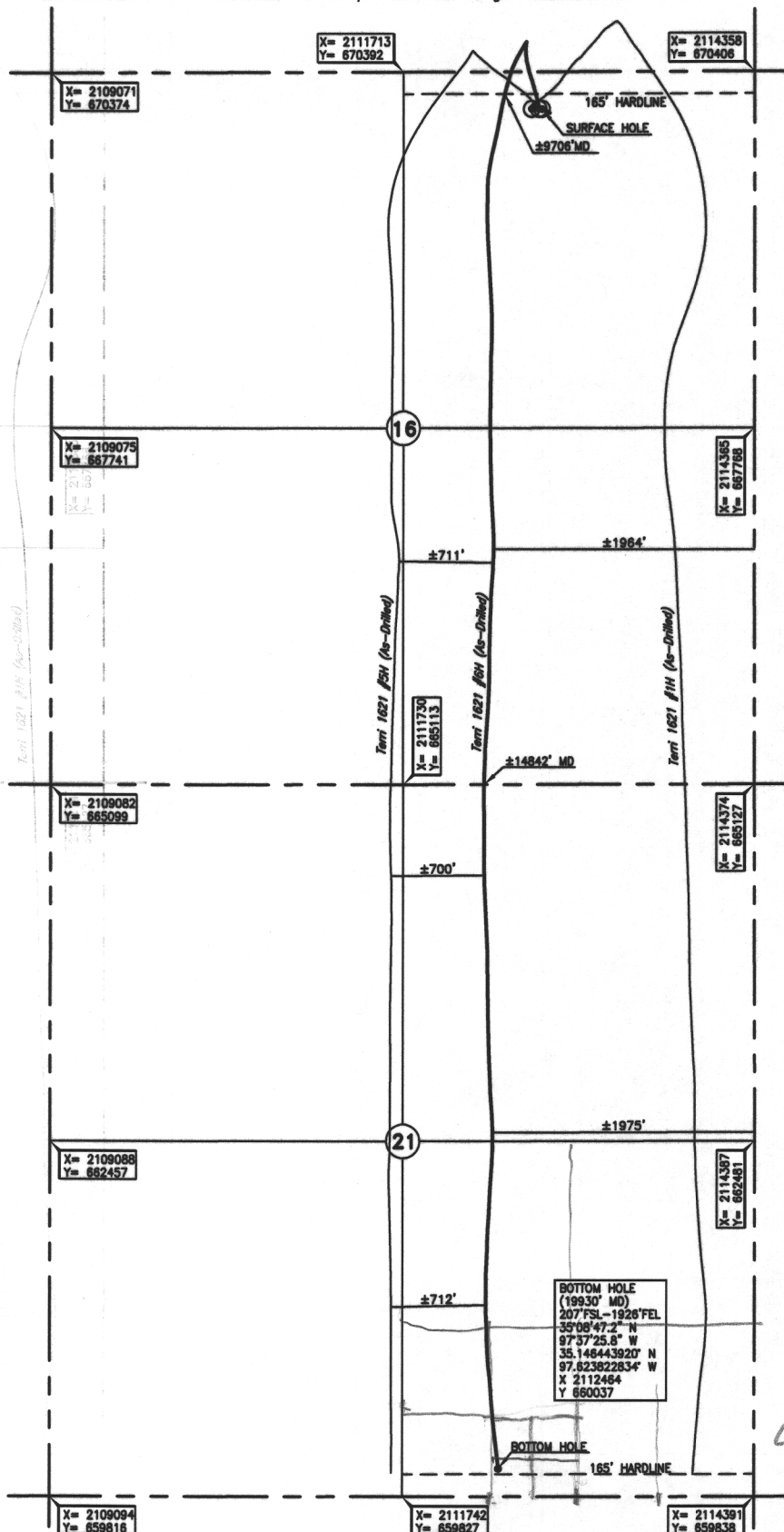


Operator: EOG RESOURCES, INC.
Lease Name: TERRI 1621
Topography & Vegetation Loc. fell on existing pod
Good Drill Site? Yes
Reference Stakes or Alternate Location
Stakes Set None
Best Accessibility to Location From North off county road
Distance & Direction From Hwy Jct. of St. Hwy. 9 East and US Hwy. 277, go ±0.5 mi. S-SW on St. Hwy. 9--US Hwy. 277, then ±1.0 mi. West on county road to the NE Cor. of Sec. 16--T6N--R4W

Well No.: #6H

ELEVATION:

1170' Gr. at level pod



Location of well receiver
see topographic sheet

DATUM: NAD-27
LAT: 35°10'26.9" N
LONG: 97°37'21.8" W
LAT: 35.174147443° N
LONG: 97.622719208° W
STATE PLANE
COORDINATES: (US Feet)
ZONE: OK SOUTH
X: 2112757
Y: 670122

Project # 125092 Date of Drawing: Mar. 21, 2019
Date Staked: Jan. 7, 2019 JP

FINAL AS-DRILLED PLAT

AS-DRILLED INFORMATION
FURNISHED BY EOG RESOURCES, INC.

BNL
SW SE SW SE