

Oklahoma Corporation Commission
Oil & Gas Conservation Division
Post Office Box 52000
Oklahoma City, Oklahoma 73152-2000
Rule 165: 10-3-25

Form 1002A

API No.: 35071240700001

Completion Report

Spud Date: June 27, 2006

OTC Prod. Unit No.: 071-117910-0-0000

Drilling Finished Date: July 01, 2006

Amended

1st Prod Date: July 12, 2006

Amend Reason: RECOMPLETION

Completion Date: July 11, 2006

Recomplete Date: January 29, 2019

Drill Type: STRAIGHT HOLE

Well Name: STATE A-4

Purchaser/Measurer:

Location: KAY 33 25N 1W
SW SE NE NE
1065 FNL 565 FEL of 1/4 SEC
Derrick Elevation: 0 Ground Elevation: 950

First Sales Date:

Operator: KODA OPERATING LLC 24242

4870 S LEWIS AVE STE 240
TULSA, OK 74105-5153

Completion Type		Location Exception		Increased Density	
X	Single Zone	Order No		Order No	
	Multiple Zone	687626		There are no Increased Density records to display.	
	Commingled				

Casing and Cement							
Type	Size	Weight	Grade	Feet	PSI	SAX	Top of CMT
SURFACE	8 5/8	23	J-55	307		200	SURFACE
PRODUCTION	5 1/2	15.5	J-55	2749		250	1654

Liner								
Type	Size	Weight	Grade	Length	PSI	SAX	Top Depth	Bottom Depth
There are no Liner records to display.								

Total Depth: 2767

Packer		Plug	
Depth	Brand & Type	Depth	Plug Type
There are no Packer records to display.		2410	RBP

Initial Test Data										
Test Date	Formation	Oil BBL/Day	Oil-Gravity (API)	Gas MCF/Day	Gas-Oil Ratio Cu FT/BBL	Water BBL/Day	Pumpin or Flowing	Initial Shut-In Pressure	Choke Size	Flow Tubing Pressure
Jan 29, 2019	ELGIN					250	PUMPING			

Completion and Test Data by Producing Formation

Formation Name: ELGIN

Code: 406ELGN

Class: DRY

Spacing Orders

Order No	Unit Size
509030	160

Perforated Intervals

From	To
2029	2040

Acid Volumes

17 BARRELS 15% HCL, 462 BARRELS FLUID

Fracture Treatments

NONE

Formation	Top
NEWKIRK	1660
ELGIN	2010

Were open hole logs run? Yes

Date last log run: July 02, 2006

Were unusual drilling circumstances encountered? No

Explanation:

Other Remarks

PERFORATED VERTZ ZONE @ 1,677' TO 1,701'. SQUEEZED OFF PERFORATIONS WITH 40 SACKS CEMENT. OCC- ORDER 240901 SPECIAL ORDER ON DRILLING AND PLUGGING WELLS IN AREA OF SALT FORK AND ARKASNSAS RIVERS (SEE ORDER FOR DETAILS).

FOR COMMISSION USE ONLY

1143387

Status: Accepted

API NO. 071-24070
OTC PROD.
UNIT NO. 071-117910-0-0000

(PLEASE TYPE OR USE BLACK INK ONLY)

OKLAHOMA CORPORATION COMMISSION
Oil & Gas Conservation Division
Post Office Box 52000
Oklahoma City, Oklahoma 73152-2000
Rule 165:10-3-25

RECEIVED
DEC 02 2019

Form 1002A
Rev. 2009

☒ ORIGINAL
☒ AMENDED (Reason)

Re-Completion

TYPE OF DRILLING OPERATION

☒ STRAIGHT HOLE ☐ DIRECTIONAL HOLE ☐ HORIZONTAL HOLE
SERVICE WELL

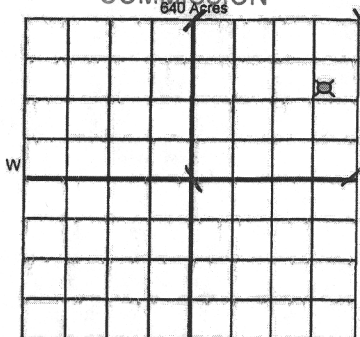
If directional or horizontal, see reverse for bottom hole location.

COUNTY	KAY	SEC	33	TWP	25N	RGE	1W
LEASE NAME	STATE			WELL NO.	A4		
SW 1/4 SE 1/4 NE 1/4 NE 1/4	FNL OF 1/4 SEC 1065			FEL OF 1/4 SEC 565			
ELEVATION	Ground	950	Latitude (if known)		Longitude (if known)		
OPERATOR NAME	KODA OPERATING, LLC			OTC / OCC OPERATOR NO.	24242		
ADDRESS	4870 S LEWIS AVE, STE 240						
CITY	TULSA		STATE	OK	ZIP	74105	

COMPLETION REPORT

SPUD DATE 6/27/2006
DRLG FINISHED DATE 7/1/2006
DATE OF WELL COMPLETION 7/11/2006
1st PROD DATE 7/12/2006
RECOMP DATE 1/29/2019

OKLAHOMA CORPORATION COMMISSION



COMPLETION TYPE

<input checked="" type="checkbox"/> SINGLE ZONE	
<input type="checkbox"/> MULTIPLE ZONE	
Application Date	
<input type="checkbox"/> COMMINGLED	
Application Date	
LOCATION EXCEPTION ORDER NO.	687626
INCREASED DENSITY ORDER NO.	240901

CASING & CEMENT (Attach Form 1002C)

TYPE	SIZE	WEIGHT	GRADE	FEET	PSI	SAX	TOP OF CMT
CONDUCTOR							
SURFACE	8 5/8	23	J-55	307		200	SURFACE
INTERMEDIATE							
PRODUCTION	5 1/2	15.5	J-55	2749		250	1654
LINER							

PACKER @ _____ BRAND & TYPE _____ PLUG @ 2410 TYPE RBP PLUG @ _____ TYPE _____
PACKER @ _____ BRAND & TYPE _____ PLUG @ _____ TYPE _____ PLUG @ _____ TYPE _____

TOTAL DEPTH 2,767

COMPLETION & TEST DATA BY PRODUCING FORMATION

FORMATION	ELGIN						No Frac
SPACING & SPACING ORDER NUMBER	509030-160 ACRES						
CLASS: Oil, Gas, Dry, Inj, Disp, Comm Disp, Svc	DRY						
	2029-2040						
PERFORATED INTERVALS							
ACID/VOLUME	15% HCL-17 BBLS						
	462 BBLS FLUID						
FRACTURE TREATMENT (Fluids/Prop Amounts)	none						

Min Gas Allowable (165:10-17-7)

Gas Purchaser/Measurer

OR
Oil Allowable (165:10-13-3)

First Sales Date

INITIAL TEST DATA

INITIAL TEST DATE	1/29/2019					
OIL-BBL/DAY	0					
OIL-GRAVITY (API)						
GAS-MCF/DAY	0					
GAS-OIL RATIO CU FT/BBL						
WATER-BBL/DAY	250					
PUMPING OR FLOWING	PUMPING					
INITIAL SHUT-IN PRESSURE						
CHOKE SIZE						
FLOW TUBING PRESSURE						

AS SUBMITTED

A record of the formations drilled through, and pertinent remarks are presented on the reverse. I declare that I have knowledge of the contents of this report and am authorized by my organization to make this report, which was prepared by me or under my supervision and direction, with the data and facts stated herein to be true, correct, and complete to the best of my knowledge and belief.

JOHN BROWN

12-2-19

918-492-0254

SIGNATURE

NAME (PRINT OR TYPE)

DATE

PHONE NUMBER

4870 S LEWIS AVE, STE 240

TULSA

OK

74105

JOHN@ORIONEXPLORATION.COM

ADDRESS

CITY

STATE

ZIP

EMAIL ADDRESS

PLEASE TYPE OR USE BLACK INK ONLY
FORMATION RECORD

Give formation names and tops, if available, or descriptions and thickness of formations drilled through. Show intervals cored or drillstem tested.

LEASE NAME _____ STATE _____ WELL NO. A4

NAMES OF FORMATIONS	TOP
NEWKIRK	1,660
ELGIN	2,010

FOR COMMISSION USE ONLY

ITD on file ☐ YES ☐ NO

APPROVED _____ DISAPPROVED _____

2) Reject Codes

Were open hole logs run? ☒ yes ☐ no

Date Last log was run 7/2/2006

Was CO₂ encountered? ☐ yes ☐ no at what depths? _____

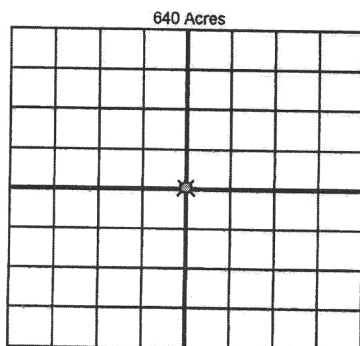
Was H₂S encountered? ☐ yes ☐ no at what depths? _____

Were unusual drilling circumstances encountered? ☐ yes ☐ no

If yes, briefly explain below

Other remarks: Perf'd Vertz zone @ 1677' to 1701'. Squeezed off perfs with 40 sax cement.

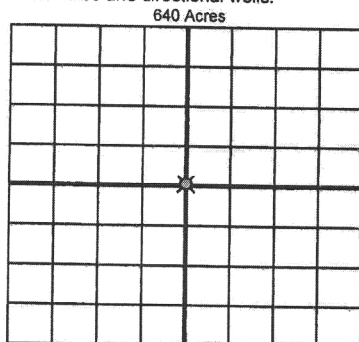
OCC - Order 240901 special order on drilling & plugging wells in area of Salt Fork & Arkansas Rivers (see order for details)



If more than three drainholes are proposed, attach a separate sheet indicating the necessary information.

Direction must be stated in degrees azimuth. Please note, the horizontal drainhole and its end point must be located within the boundaries of the lease or spacing unit.

Directional surveys are required for all drainholes and directional wells.



BOTTOM HOLE LOCATION FOR DIRECTIONAL HOLE

SEC	TWP	RGE	COUNTY
Spot Location			
1/4	1/4	1/4	1/4
Measured Total Depth		True Vertical Depth	Feet From 1/4 Sec Lines FSL FWL
BHL From Lease, Unit, or Property Line:			

BOTTOM HOLE LOCATION FOR HORIZONTAL HOLE: (LATERALS)

LATERAL #1

SEC	TWP	RGE	COUNTY
Spot Location			
1/4	1/4	1/4	1/4
Depth of Deviation	Radius of Turn	Direction	Total Length
Measured Total Depth		True Vertical Depth	BHL From Lease, Unit, or Property Line:

LATERAL #2

SEC	TWP	RGE	COUNTY
Spot Location			
1/4	1/4	1/4	1/4
Depth of Deviation	Radius of Turn	Direction	Total Length
Measured Total Depth		True Vertical Depth	BHL From Lease, Unit, or Property Line:

LATERAL #3

SEC	TWP	RGE	COUNTY
Spot Location			
1/4	1/4	1/4	1/4
Depth of Deviation	Radius of Turn	Direction	Total Length
Measured Total Depth		True Vertical Depth	BHL From Lease, Unit, or Property Line:

API NO. 071-24070 (PLEASE TYPE OR USE BLACK INK ONLY)

OTC PROD. UNIT NO. 071-117910-0-0000

OKLAHOMA CORPORATION COMMISSION

Oil & Gas Conservation Division

Post Office Box 52000

Oklahoma City, Oklahoma 73152-2000

Rule 165:10-3-25

COMPLETION REPORT

RECEIVED

Form 1002A

Rev. 2009

JUL 01 2019

OKLAHOMA CORPORATION COMMISSION

ORIGINAL
AMENDED (Reason)

Re-Completion

TYPE OF DRILLING OPERATION

☒ STRAIGHT HOLE ☐ DIRECTIONAL HOLE ☐ HORIZONTAL HOLE
☐ SERVICE WELL

If directional or horizontal, see reverse for bottom hole location.

COUNTY	KAY	SEC	33	TWP	25N	RGE	1W
LEASE NAME	STATE			WELL NO.	A4		
SW 1/4	SE 1/4	NE 1/4	NE 1/4	FND OF 1/4 SEC	1065	FEL OF 1/4 SEC	565
ELEVATION	Ground	950	Latitude (if known)	Longitude (if known)			
OPERATOR NAME	KODA OPERATING, LLC			OTC / OCC OPERATOR NO.	24242		
ADDRESS	4870 S LEWIS AVE, STE 240						
CITY	TULSA	STATE	OK	ZIP	74105		

COMPLETION TYPE

<input checked="" type="checkbox"/> SINGLE ZONE	
<input type="checkbox"/> MULTIPLE ZONE	
<input type="checkbox"/> COMMINGLED	
LOCATION EXCEPTION ORDER NO.	687626
INCREASED DENSITY ORDER NO.	240901

CASING & CEMENT (Attach Form 1002C)

TYPE	SIZE	WEIGHT	GRADE	FEET	PSI	SAX	TOP OF CMT
CONDUCTOR							
SURFACE	8 5/8	23	J-55	307		200	SURFACE
INTERMEDIATE							
PRODUCTION	5 1/2	15.5	J-55	2749		250	1654
LINER							

 PACKER @ _____ BRAND & TYPE _____ PLUG @ _____ TYPE _____ PLUG @ _____ TYPE _____
 PACKER @ _____ BRAND & TYPE _____ PLUG @ _____ TYPE _____ PLUG @ _____ TYPE _____

TOTAL DEPTH 2,767

COMPLETION & TEST DATA BY PRODUCING FORMATION

406 ELGIN

FORMATION	ELGIN					No Frac
SPACING & SPACING ORDER NUMBER	509030-160 ACRES					
CLASS: Oil, Gas, Dry, Inj, Disp, Comm Disp, Svc	OIL					
	2029-2040					
PERFORATED INTERVALS						
ACID/VOLUME	15%HCL-17 BBLS					
	462 BBLS FLUID					
FRACTURE TREATMENT (Fluids/Prop Amounts)	none					

Min Gas Allowable (165:10-17-7)

Gas Purchaser/Measurer



OR

First Sales Date

INITIAL TEST DATA

Oil Allowable (165:10-13-3)

INITIAL TEST DATE	1/29/2019				
OIL-BBL/DAY	0				
OIL-GRAVITY (API)					
GAS-MCF/DAY	0				
GAS-OIL RATIO CU FT/BBL					
WATER-BBL/DAY	250				
PUMPING OR FLOWING					
INITIAL SHUT-IN PRESSURE					
CHOKE SIZE					
FLOW TUBING PRESSURE					

AS SUBMITTED

A record of the formations drilled through, and pertinent remarks are presented on the reverse. I declare that I have knowledge of the contents of this report and am authorized by my organization to make this report, which was prepared by me or under my supervision and direction, with the data and facts stated herein to be true, correct, and complete to the best of my knowledge and belief.

STEVE MILLER

6-26-19

918-492-0254

SIGNATURE

NAME (PRINT OR TYPE)

DATE

PHONE NUMBER

4870 S LEWIS AVE, STE 240

TULSA

OK

74105

STEVE@ORIONEXPLORATION.COM

ADDRESS

CITY

STATE

ZIP

EMAIL ADDRESS

PLEASE TYPE OR USE BLACK INK ONLY
FORMATION RECORD

Give formation names and tops, if available, or descriptions and thickness of formations drilled through. Show intervals cored or drillstem tested.

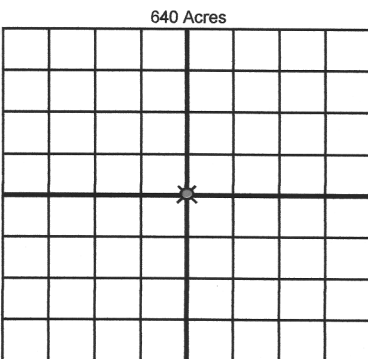
NAMES OF FORMATIONS	TOP
NEWKIRK	1,660
ELGIN	2,010

LEASE NAME _____ STATE _____ WELL NO. A4

FOR COMMISSION USE ONLY	
ITD on file <input type="checkbox"/> YES <input type="checkbox"/> NO	
APPROVED _____	DISAPPROVED _____
2) Reject Codes	

Were open hole logs run?	<u>X</u> yes	no
Date Last log was run	<u>7/2/2006</u>	
Was CO ₂ encountered?	yes	no at what depths? _____
Was H ₂ S encountered?	yes	no at what depths? _____
Were unusual drilling circumstances encountered?	yes	no
If yes, briefly explain below		

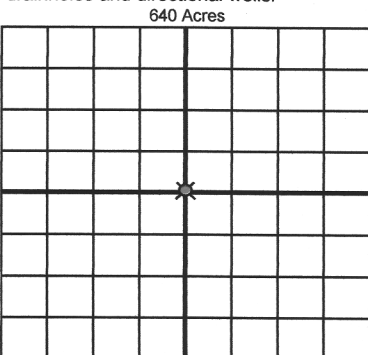
Other remarks: Perf'd Vertz zone @ 1677' to 1701'. Squeezed off perfs with 40 sax cement.



If more than three drainholes are proposed, attach a separate sheet indicating the necessary information.

Direction must be stated in degrees azimuth.
Please note, the horizontal drainhole and its end point must be located within the boundaries of the lease or spacing unit.

Directional surveys are required for all drainholes and directional wells.



BOTTOM HOLE LOCATION FOR DIRECTIONAL HOLE

SEC	TWP	RGE	COUNTY
Spot Location	1/4	1/4	1/4
Measured Total Depth	True Vertical Depth	BHL From Lease, Unit, or Property Line:	

BOTTOM HOLE LOCATION FOR HORIZONTAL HOLE: (LATERALS)

LATERAL #1

SEC	TWP	RGE	COUNTY
Spot Location	1/4	1/4	1/4
Depth of Deviation	Radius of Turn	Direction	Total Length
Measured Total Depth	True Vertical Depth	BHL From Lease, Unit, or Property Line:	

LATERAL #2

SEC	TWP	RGE	COUNTY
Spot Location	1/4	1/4	1/4
Depth of Deviation	Radius of Turn	Direction	Total Length
Measured Total Depth	True Vertical Depth	BHL From Lease, Unit, or Property Line:	

LATERAL #3

SEC	TWP	RGE	COUNTY
Spot Location	1/4	1/4	1/4
Depth of Deviation	Radius of Turn	Direction	Total Length
Measured Total Depth	True Vertical Depth	BHL From Lease, Unit, or Property Line:	