

Oklahoma Corporation Commission
Oil & Gas Conservation Division
Post Office Box 52000
Oklahoma City, Oklahoma 73152-2000
Rule 165: 10-3-25

Form 1002A

API No.: 35071240530001

Completion Report

Spud Date: April 15, 2006

OTC Prod. Unit No.: 071-118692-0-0000

Drilling Finished Date: April 25, 2006

1st Prod Date: June 10, 2006

Amended

Completion Date: May 30, 2006

Amend Reason: RECOMPLETION

Recomplete Date: March 01, 2019

Drill Type: STRAIGHT HOLE

Well Name: SHELBY-STATE 2-36

Purchaser/Measurer:

Location: KAY 36 25N 1W
NW SW SE SW
375 FSL 1440 FWL of 1/4 SEC
Derrick Elevation: 0 Ground Elevation: 980

First Sales Date:

Operator: KODA OPERATING LLC 24242

4870 S LEWIS AVE STE 240
TULSA, OK 74105-5153

Completion Type		Location Exception		Increased Density	
X	Single Zone	Order No		Order No	
	Multiple Zone	There are no Location Exception records to display.		There are no Increased Density records to display.	
	Commingled				

Casing and Cement							
Type	Size	Weight	Grade	Feet	PSI	SAX	Top of CMT
SURFACE	9 5/8	36	J-55	301		200	SURFACE
PRODUCTION	7	26	J-55	4745		550	3732

Liner								
Type	Size	Weight	Grade	Length	PSI	SAX	Top Depth	Bottom Depth
There are no Liner records to display.								

Total Depth: 4752

Packer		Plug	
Depth	Brand & Type	Depth	Plug Type
There are no Packer records to display.		4150	CIBP

Initial Test Data										
Test Date	Formation	Oil BBL/Day	Oil-Gravity (API)	Gas MCF/Day	Gas-Oil Ratio Cu FT/BBL	Water BBL/Day	Pumpin or Flowing	Initial Shut-In Pressure	Choke Size	Flow Tubing Pressure
Jun 03, 2019	LAYTON	20	40.3	115	5750	1800	PUMPING			

Completion and Test Data by Producing Formation

Formation Name: LAYTON

Code: 405LYTN

Class: OIL

Spacing Orders

Order No	Unit Size
522474	80

Perforated Intervals

From	To
3160	3166

Acid Volumes

1,000 GALS 15% ACID

Fracture Treatments

460 BBLS FLUID & 12,000 LBS 16/30 SAND
--

Formation	Top
LAYTON	3150

Were open hole logs run? Yes

Date last log run: May 12, 2006

Were unusual drilling circumstances encountered? No

Explanation:

Other Remarks

OCC - ORIGINAL 1002A SHOWED DV TOOL AT 3,223'. OCC - ORDER 240901 IS A SPECIAL ORDER ON DRILLING AND PLUGGING WELLS IN AREA OF SALT FORK AND ARKANSAS RIVER BASIN (SEE ORDER FOR DETAILS).

FOR COMMISSION USE ONLY

1143390

Status: Accepted

API NO. 071-24053

(PLEASE TYPE OR USE BLACK INK ONLY)

OTC PROD.
UNIT NO. 071-118692-0-0000

OKLAHOMA CORPORATION COMMISSION

Oil & Gas Conservation Division

Post Office Box 52000

Oklahoma City, Oklahoma 73152-2000

Rule 165:10-3-25

RECEIVED
DEC 02 2019

Form 1002A

Rev. 2009

☒ ORIGINAL
☐ AMENDED (Reason)

RE-COMPLETION

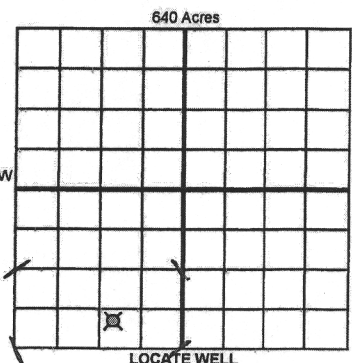
COMPLETION REPORT

TYPE OF DRILLING OPERATION

☒ STRAIGHT HOLE ☐ DIRECTIONAL HOLE ☐ HORIZONTAL HOLE
☐ SERVICE WELL

If directional or horizontal, see reverse for bottom hole location.

COUNTY	KAY	SEC	36	TWP	25N	RGE	1W
LEASE NAME	SHELBY STATE			WELL NO.	2-36		
NW 1/4 SW 1/4 SE 1/4 SW 1/4	FSL OF 1/4 SEC	375	FWL OF 1/4 SEC	1440	DATE OF WELL COMPLETION	5/30/2006	
ELEVATION Derrick FL	Ground	980	Latitude (if known)	Longitude (if known)		1st PROD DATE 6/10/2006	
OPERATOR NAME	KODA OPERATING, LLC			OTC / OCC OPERATOR NO.	24242		
ADDRESS	4870 S LEWIS AVE, STE 240						
CITY	TULSA	STATE	OK	ZIP	74105		



COMPLETION TYPE

<input checked="" type="checkbox"/>	SINGLE ZONE	
<input type="checkbox"/>	MULTIPLE ZONE	
<input type="checkbox"/>	Application Date	
<input type="checkbox"/>	COMMINGLED	
<input type="checkbox"/>	Application Date	
<input type="checkbox"/>	LOCATION EXCEPTION	
<input type="checkbox"/>	ORDER NO.	
<input type="checkbox"/>	INCREASED DENSITY	
<input type="checkbox"/>	ORDER NO.	240901

CASING & CEMENT (Attach Form 1002C)

TYPE	SIZE	WEIGHT	GRADE	FEET	PSI	SAX	TOP OF CMT
CONDUCTOR							
SURFACE	9 5/8	36	J-55	301		200	SURFACE
INTERMEDIATE							
PRODUCTION	7	26	J-55	4745		550	3732
LINER							

PACKER @ _____ BRAND & TYPE _____ PLUG @ 4150 TYPE CBP PLUG @ _____ TYPE _____ TOTAL DEPTH 4,752
 PACKER @ _____ BRAND & TYPE _____ PLUG @ _____ TYPE _____ PLUG @ _____ TYPE _____

COMPLETION & TEST DATA BY PRODUCING FORMATION

FORMATION	LAYTON						
SPACING & SPACING ORDER NUMBER	522474 - 80 ACRES						
CLASS: Oil, Gas, Dry, Inj, Disp, Comm Disp, Svc	OIL & GAS	per 60R					
	3160-3166						
PERFORATED INTERVALS							
ACID/VOLUME	1000 GAL 15% ACID						
FRACTURE TREATMENT (Fluids/Prop Amounts)	460 BBLs FLUID						
	12,000# 16/30 SAND						

Monitor Report
to Frac Fluids

Min Gas Allowable (165:10-17-7)

Gas Purchaser/Measurer

☐ OR
 Oil Allowable (165:10-13-3)

First Sales Date

INITIAL TEST DATA

INITIAL TEST DATE	6/3/2019					
OIL-BBL/DAY	20					
OIL-GRAVITY (API)	40.3					
GAS-MCF/DAY	115					
GAS-OIL RATIO CU FT/BBL	5750					
WATER-BBL/DAY	1800					
PUMPING OR FLOWING	PUMPING					
INITIAL SHUT-IN PRESSURE						
CHOKE SIZE						
FLOW TUBING PRESSURE						

AS SUBMITTED

A record of the formations drilled through, and pertinent remarks are presented on the reverse. I declare that I have knowledge of the contents of this report and am authorized by my organization to make this report, which was prepared by me or under my supervision and direction, with the data and facts stated herein to be true, correct, and complete to the best of my knowledge and belief.

JOHN BROWN

12-2-19

918-492-0254

SIGNATURE

NAME (PRINT OR TYPE)

DATE

PHONE NUMBER

4870 S LEWIS AVE, STE 240

TULSA

OK

74105

JOHN@ORIONEXPLORATION.COM

ADDRESS

CITY

STATE

ZIP

EMAIL ADDRESS

Give formation names and tops, if available, or descriptions and thickness of formations drilled through. Show intervals cored or drillstem tested.

FOR COMMISSION USE ONLY	
ITD on file	<input type="checkbox"/> YES <input type="checkbox"/> NO
APPROVED	DISAPPROVED
2) Reject Codes	

Were open hole logs run? X yes no

Date Last log was run 5/12/2006

Were CO₂ encountered? yes no at what depths?

Were H₂S encountered? yes no at what depths?

Were unusual drilling circumstances encountered? yes no

If yes, briefly explain below

Other remarks:

Other remarks: CCC-Order 240901 is a special order on drilling + plugging
wells in area of Salt Fork and Arkansas River Basin (see
order for details)

640 Acres

If more than three drainholes are proposed, attach a separate sheet indicating the necessary information.

Direction must be stated in degrees azimuth.
Please note, the horizontal drainhole and its end
point must be located within the boundaries of the
lease or spacing unit.

Directional surveys are required for all drainholes and directional wells.

640 Acres

SEC	TWP	RGE	COUNTY			
Spot Location			Feet From 1/4 Sec Lines		FSL	FWL
1/4	1/4	1/4	1/4			
Measured Total Depth		True Vertical Depth		BHL From Lease, Unit, or Property Line:		

LATERAL #1						
SEC	TWP	RGE	COUNTY			
Spot Location						
1/4	1/4	1/4	1/4	Feet From 1/4 Sec Lines	FSL	FWL
Depth of Deviation		Radius of Turn		Direction	Total Length	
Measured Total Depth		True Vertical Depth		BHL From Lease, Unit, or Property Line:		

SEC	TWP	RGE	COUNTY				
Spot Location							
1/4	1/4	1/4	1/4	Feet From 1/4 Sec Lines	FSL		FWL
Depth of Deviation		Radius of Turn		Direction	Total Length		
Measured Total Depth		True Vertical Depth		BHL From Lease, Unit, or Property Line:			

SEC	TWP	RGE	COUNTY				
Spot Location				Feet From 1/4 Sec Lines	FSL		FWL
1/4	1/4	1/4	1/4				
Depth of Deviation		Radius of Turn	Direction	Total Length			
Measured Total Depth		True Vertical Depth	BHL From Lease, Unit, or Property Line:				

API NO. 071-24053 (PLEASE TYPE OR USE BLACK INK ONLY)

OTC PROD. UNIT NO. 071-18892-0-000

OKLAHOMA CORPORATION COMMISSION

Oil & Gas Conservation Division

Post Office Box 52000

Oklahoma City, Oklahoma 73152-2000

Rule 165:10-3-25

RECEIVED

Form 1002A

Rev. 2009

JUL 01 2019

OKLAHOMA CORPORATION COMMISSION

☐ ORIGINAL
☒ AMENDED (Reason)

RE-COMPLETION

COMPLETION REPORT

TYPE OF DRILLING OPERATION

☒ STRAIGHT HOLE ☐ DIRECTIONAL HOLE ☐ HORIZONTAL HOLE
☐ SERVICE WELL

If directional or horizontal, see reverse for bottom hole location.

COUNTY	KAY	SEC	36	TWP	25N	RGE	1W
LEASE NAME	SHELBY STATE			WELL NO.	2-36		
NW 1/4 SW 1/4 SE 1/4 SW 1/4	FSL OF 1/4 SEC	375	FWL OF 1/4 SEC	1440	DATE OF WELL COMPLETION	5/30/2006	
ELEVATION	Ground	980	Latitude (if known)	Longitude (if known)			
OPERATOR NAME	KODA OPERATING, LLC			OTC / OCC OPERATOR NO.	24242		
ADDRESS	4870 S LEWIS AVE, STE 240						
CITY	TULSA	STATE	OK	ZIP	74105		

COMPLETION TYPE

<input checked="" type="checkbox"/> SINGLE ZONE	
<input type="checkbox"/> MULTIPLE ZONE	
Application Date	
<input type="checkbox"/> COMMINGLED	
Application Date	
LOCATION EXCEPTION ORDER NO.	
INCREASED DENSITY ORDER NO.	240901

CASING & CEMENT (Attach Form 1002C)

TYPE	SIZE	WEIGHT	GRADE	FEET	PSI	SAX	TOP OF CMT
CONDUCTOR							
SURFACE	9 5/8	36	J-55	301		200	SURFACE
INTERMEDIATE							
PRODUCTION	7	26	J-55	4745		550	3732
LINER							
						TOTAL DEPTH	4,752

 PACKER @ _____ BRAND & TYPE _____ PLUG @ 4150 TYPE CBP PLUG @ _____ TYPE _____
 PACKER @ _____ BRAND & TYPE _____ PLUG @ _____ TYPE _____ PLUG @ _____ TYPE _____

COMPLETION & TEST DATA BY PRODUCING FORMATION

405 LVTN

FORMATION	LAYTON					
SPACING & SPACING ORDER NUMBER	522474 - 80 ACRES					
CLASS: Oil, Gas, Dry, Inj, Disp, Comm Disp, Svc	OIL & GAS	Per GOR				
PERFORATED INTERVALS	3160-3166					
ACID/VOLUME						
FRACTURE TREATMENT (Fluids/Prop Amounts)						

Min Gas Allowable (165:10-17-7)

Gas Purchaser/Measurer



OR

First Sales Date

Oil Allowable (165:10-13-3)

INITIAL TEST DATA

INITIAL TEST DATE	6/3/2019					
OIL-BBL/DAY	20					
OIL-GRAVITY (API)						
GAS-MCF/DAY	115					
GAS-OIL RATIO CU FT/BBL	5750					
WATER-BBL/DAY	1800					
PUMPING OR FLOWING						
INITIAL SHUT-IN PRESSURE						
CHOKE SIZE						
FLOW TUBING PRESSURE						

AS SUBMITTED

A record of the formations drilled through, and pertinent remarks are presented on the reverse. I declare that I have knowledge of the contents of this report and am authorized by my organization to make this report, which was prepared by me or under my supervision and direction, with the data and facts stated herein to be true, correct, and complete to the best of my knowledge and belief.

STEVE MILLER

6-26-19

918-492-0254

SIGNATURE

NAME (PRINT OR TYPE)

DATE

PHONE NUMBER

4870 S LEWIS AVE, STE 240

TULSA

OK

74105

STEVE@ORIONEXPLORATION.COM

ADDRESS

CITY

STATE

ZIP

EMAIL ADDRESS

PLEASE TYPE OR USE BLACK INK ONLY
FORMATION RECORD

Give formation names and tops, if available, or descriptions and thickness of formations drilled through. Show intervals cored or drillstem tested.

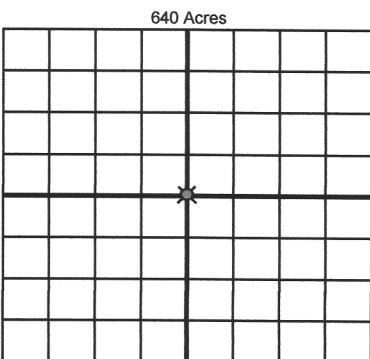
LEASE NAME SHELBY STATE WELL NO. 2-36

NAMES OF FORMATIONS	TOP
LAYTON	3,150

FOR COMMISSION USE ONLY	
ITD on file <input type="checkbox"/> YES <input type="checkbox"/> NO	
APPROVED _____	DISAPPROVED _____
2) Reject Codes	

Were open hole logs run?	<u>X</u> yes <input type="checkbox"/> no
Date Last log was run	<u>5/12/2006</u>
Was CO ₂ encountered?	<input type="checkbox"/> yes <input type="checkbox"/> no at what depths? _____
Was H ₂ S encountered?	<input type="checkbox"/> yes <input type="checkbox"/> no at what depths? _____
Were unusual drilling circumstances encountered?	<input type="checkbox"/> yes <input type="checkbox"/> no
If yes, briefly explain below	

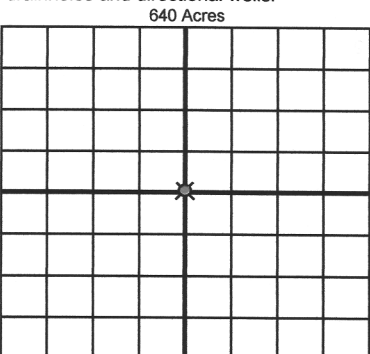
Other remarks: OCC - original 1002A showed DV-tool at 3223'



If more than three drainholes are proposed, attach a separate sheet indicating the necessary information.

Direction must be stated in degrees azimuth. Please note, the horizontal drainhole and its end point must be located within the boundaries of the lease or spacing unit.

Directional surveys are required for all drainholes and directional wells.



BOTTOM HOLE LOCATION FOR DIRECTIONAL HOLE

SEC	TWP	RGE	COUNTY
Spot Location			
1/4	1/4	1/4	1/4
Measured Total Depth		True Vertical Depth	BHL From Lease, Unit, or Property Line:

BOTTOM HOLE LOCATION FOR HORIZONTAL HOLE: (LATERALS)

LATERAL #1

SEC	TWP	RGE	COUNTY
Spot Location			
1/4	1/4	1/4	1/4
Depth of Deviation		Radius of Turn	Direction
Measured Total Depth		True Vertical Depth	BHL From Lease, Unit, or Property Line:

LATERAL #2

SEC	TWP	RGE	COUNTY
Spot Location			
1/4	1/4	1/4	1/4
Depth of Deviation		Radius of Turn	Direction
Measured Total Depth		True Vertical Depth	BHL From Lease, Unit, or Property Line:

LATERAL #3

SEC	TWP	RGE	COUNTY
Spot Location			
1/4	1/4	1/4	1/4
Depth of Deviation		Radius of Turn	Direction
Measured Total Depth		True Vertical Depth	BHL From Lease, Unit, or Property Line: