

Oklahoma Corporation Commission
Oil & Gas Conservation Division
Post Office Box 52000
Oklahoma City, Oklahoma 73152-2000
Rule 165: 10-3-25

Form 1002A

API No.: 35087222430001

Completion Report

Spud Date: July 20, 2019

OTC Prod. Unit No.: 087-226134-0-0000

Drilling Finished Date: August 03, 2019

1st Prod Date: September 26, 2019

Completion Date: September 26, 2019

Drill Type: HORIZONTAL HOLE

Min Gas Allowable: Yes

Well Name: WARHAWK 0631 2H

Purchaser/Measurer: ENABLE GATHERING &
PROCESSING

Location: MCCLAIN 7 9N 4W
NW SE NE NW
829 FNL 2084 FWL of 1/4 SEC
Derrick Elevation: 0 Ground Elevation: 1354

First Sales Date: 09/26/2019

Operator: EOG RESOURCES INC 16231

3817 NW EXPRESSWAY STE 500
OKLAHOMA CITY, OK 73112-1483

Completion Type		Location Exception		Increased Density	
X	Single Zone	Order No		Order No	
	Multiple Zone	700572		699123	
	Commingled			700141	

Casing and Cement							
Type	Size	Weight	Grade	Feet	PSI	SAX	Top of CMT
SURFACE	9 5/8	36	J-55	1234		480	SURFACE
PRODUCTION	5 1/2	20	P-110	19850		2628	8900

Liner								
Type	Size	Weight	Grade	Length	PSI	SAX	Top Depth	Bottom Depth
There are no Liner records to display.								

Total Depth: 19855

Packer		Plug	
Depth	Brand & Type	Depth	Plug Type
There are no Packer records to display.		There are no Plug records to display.	

Initial Test Data										
Test Date	Formation	Oil BBL/Day	Oil-Gravity (API)	Gas MCF/Day	Gas-Oil Ratio Cu FT/BBL	Water BBL/Day	Pumpin or Flowing	Initial Shut-In Pressure	Choke Size	Flow Tubing Pressure
Sep 28, 2019	WOODFORD	794	40	985	1241	7171	FLOWING	1600	128	484

Completion and Test Data by Producing Formation

Formation Name: WOODFORD

Code: 319WDFD

Class: OIL

Spacing Orders

Order No	Unit Size
645373	640
689814	640
700571	MULTIUNIT

Perforated Intervals

From	To
9650	19756

Acid Volumes

3,016 GALLONS 7.5% HCL TOTAL ACID

Fracture Treatments

19,460,772 GALLONS TOTAL FLUID, 25,366,750 POUNDS TOTAL PROPPANT

Formation	Top
WOODFORD	9434

Were open hole logs run? No

Date last log run:

Were unusual drilling circumstances encountered? No

Explanation:

Other Remarks

OCC - THIS DOCUMENT IS ACCEPTED BASED ON THE DATA SUBMITTED NEITHER THE FINAL LOCATION EXCEPTION NOR THE FINAL MULTIUNIT ORDERS HAVE BEEN SUBMITTED.

Lateral Holes

Sec: 31 TWP: 10N RGE: 4W County: MCCLAIN

NW NE NW NW

189 FNL 957 FWL of 1/4 SEC

Depth of Deviation: 8950 Radius of Turn: 795 Direction: 8 Total Length: 10110

Measured Total Depth: 19855 True Vertical Depth: 8910 End Pt. Location From Release, Unit or Property Line: 189

FOR COMMISSION USE ONLY

1144237

Status: Accepted

API NO. 087-22243X
OTC PROD. UNIT NO. 087-226134

PLEASE TYPE OR USE BLACK INK ONLY
NOTE:

Attach copy of original 1002A
if recompletion or reentry.

OKLAHOMA CORPORATION COMMISSION
Oil & Gas Conservation Division
Post Office Box 52000
Oklahoma City, Oklahoma 73152-2000
Rule 165:10-3-25

RECEIVED
OCT 14 2019

Form 1002A
Rev. 2009

☒ ORIGINAL
☐ AMENDED (Reason)

COMPLETION REPORT

TYPE OF DRILLING OPERATION

☐ STRAIGHT HOLE ☐ DIRECTIONAL HOLE ☒ HORIZONTAL HOLE
☐ SERVICE WELL

If directional or horizontal, see reverse for bottom hole location.

COUNTY	MCCLAIN	SEC	7	TWP	9N	RGE	4W	SPUD DATE	7/20/2019
LEASE NAME	WARHAWK 0631			WELL NO.	2H			DRLG FINISHED DATE	8/3/19
NW 1/4 SE 1/4 NE 1/4 NW 1/4	FNL 1/4 SEC 829			FWL OF 1/4 SEC	2,084			DATE OF WELL COMPLETION	9/26/19
ELEVATION	Ground 1,354			Latitude (if known)				1st PROD DATE	9/26/19
FL				Longitude (if known)				RECOMP DATE	
OPERATOR NAME	EOG Resources, Inc.			OTC/OCC OPERATOR NO.	16231				
ADDRESS	3817 NW Expressway, Suite 500								
CITY	Oklahoma City			STATE	OK		ZIP	73112	

OKLAHOMA CORPORATION COMMISSION

LOCATE WELL

COMPLETION TYPE

<input checked="" type="checkbox"/> SINGLE ZONE
<input type="checkbox"/> MULTIPLE ZONE
Application Date
<input type="checkbox"/> COMMINGLED
Application Date
LOCATION EXCEPTION ORDER
INCREASED DENSITY ORDER NO.

CASING & CEMENT (Form 1002C must be attached)

TYPE	SIZE	WEIGHT	GRADE	FEET	PSI	SAX	TOP OF CMT
CONDUCTOR							
SURFACE	9 5/8	36	J-55	1,234		480	SURFACE
INTERMEDIATE							
PRODUCTION	5 1/2	20	P-110	19,850		2,628	8,900
LINER							
				TOTAL DEPTH	19,855		

PACKER @ _____ BRAND & TYPE _____ PLUG @ _____ TYPE _____ PLUG @ _____ TYPE _____
PACKER @ _____ BRAND & TYPE _____ PLUG @ _____ TYPE _____ PLUG @ _____ TYPE _____

COMPLETION & TEST DATA BY PRODUCING FORMATION

FORMATION	WOODFORD
SPACING & SPACING ORDER NUMBER	640/689814, 645373 - MU 700571 I.O.
CLASS: Oil, Gas, Dry, Inj, Disp, Comm Disp, Svc	6 OIL 31
PERFORATED INTERVALS	9,650 - 19,756
ACID/VOLUME	TOTAL ACID - 3,016 GALS 7.5% HCL
FRACTURE TREATMENT (Fluids/Prop Amounts)	TOTAL FLUID - 19,460,772 GALS TOTAL PROP - 25,366,750 LBS

Reported to Frac Focus

☒ Min Gas Allowable (165:10-17-7)
OR
Oil Allowable (165:10-13-3)

Gas Purchaser/Measurer
First Sales Date

Enable Gathering & Processing
9/26/2019

INITIAL TEST DATA

INITIAL TEST DATE	9/28/2019
OIL-BBL/DAY	794
OIL-GRAVITY (API)	40
GAS-MCF/DAY	985
GAS-OIL RATIO CU FT/BBL	1,241
WATER-BBL/DAY	7,171
PUMPING OR FLOWING	FLOWING
INITIAL SHUT-IN PRESSURE	1,600
CHOKE SIZE	128
FLOW TUBING PRESSURE	484

AS SUBMITTED

A record of the formations drilled through, and pertinent remarks are presented on the reverse. I declare that I have knowledge of the contents of this report and am authorized by my organization to make this report, which was prepared by me or under my supervision and direction, with the data and facts stated herein to be true, correct, and complete to the best of my knowledge and belief.

SIGNATURE	Joni Reeder	DATE	10/11/2019	PHONE NUMBER	405-246-3100
ADDRESS	3817 NW Expressway, Suite 500	CITY	Oklahoma City	STATE	OK
		ZIP	73112	EMAIL ADDRESS	joni_reeder@eogresources.com

FORMATION RECORD

LEASE NAME

WARHAWK 0631

WELL NO. 2H

NAMES OF FORMATIONS	TOP
<div data-bbox="130 153 583 187">WOODFORD MD</div>	<div data-bbox="583 153 715 187">9,434</div>

FOR COMMISSION USE ONLY	
ITD on file	<input type="checkbox"/> YES <input type="checkbox"/> NO
APPROVED	DISAPPROVED
<div>2) Reject Codes</div> <div> <div></div> <div></div> <div></div> <div></div> <div></div> </div>	

Were open hole logs run? ___ yes X no

Date Last log was run N/A _____

Was CO₂ encountered? ___ yes X no at what depths? _____

Was H₂S encountered? ___ yes X no at what depths? _____

Were unusual drilling circumstances encountered? ___ yes X no
If yes, briefly explain below:

Other remarks:

640 Acres

Direction must be stated in degrees azimuth.
Please note, the horizontal drainhole and its end point must be located within the boundaries of the lease or spacing unit.

640 Acres

A 10x10 grid representing 640 acres. The grid is divided into four 5x5 quadrants by a thick black cross. The top-left quadrant is shaded light blue. The top-right quadrant is shaded light green. The bottom-left quadrant is shaded light orange. The bottom-right quadrant is shaded light purple. The text '640 Acres' is written in black at the top center of the grid.

BOTTOM HOLE LOCATION FOR DIRECTIONAL HOLE

SEC	TWP	RGE	COUNTY			
Spot Location						
1/4	1/4	1/4	1/4	Feet From 1/4 Sec Lines	FSL	FWL
Measured Total Depth		True Vertical Depth		BHL From Lease, Unit, or Property Line:		

BOTTOM HOLE LOCATION FOR HORIZONTAL HOLE: (LATERALS)

LATERAL #1

SEC 31	TWP 10N	RGE 4W	COUNTY MCCLAIN			
Spot Location			Feet From 1/4 Sec Lines		FNL 189	FWL 957
NW 1/4	NE 1/4	NW 1/4	NW 1/4			
Depth of Deviation	8,950	Radius of Turn	795	Direction 8.38	Total Length	10,110
Measured Total Depth		True Vertical Depth		BHL From Lease, Unit, or Property Line:		
19,855		8,910		189		

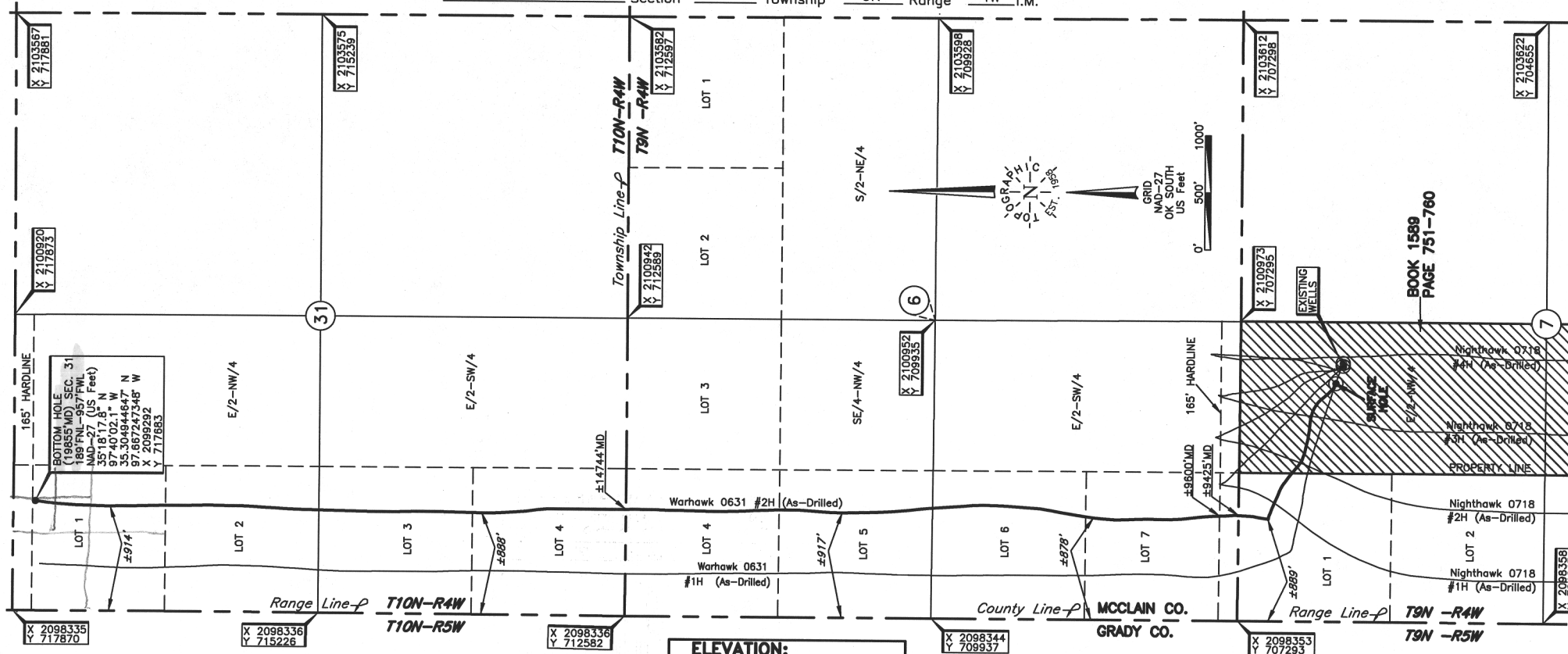
LATERAL #2

SEC	TWP	RGE	COUNTY
Spot Location			
1/4	1/4	1/4	1/4
Feet From 1/4 Sec Lines		FSL	FWL
Depth of Deviation	Radius of Turn	Direction	Total Length
Measured Total Depth	True Vertical Depth	BHL From Lease, Unit, or Property Line:	

LATERAL #3

SEC	TWP	RGE	COUNTY			
Spot Location						
1/4	1/4	1/4	1/4	Feet From 1/4 Sec Lines	FSL	FWL
Depth of Deviation	Radius of Turn			Direction	Total Length	
Measured Total Depth		True Vertical Depth		BHL From Lease, Unit, or Property Line:		

TOPOGRAPHIC LAND SURVEYORS OF OKLAHOMA
13800 WIRELESS WAY, OKLA. CITY, OKLA. 73134 * LOCAL (405) 843-4847 * OUT OF STATE (800) 654-3219
MCCLAIN *Certificate of Authorization No. 1293 LS* _____ County, Oklahoma
829°FNL - 2084°FWL Section 7 Township 9N Range 4W I.M.



Operator: EOG RESOURCES, INC.

Lease Name: WARHAWK 0631

Well No.: #2H

Topography & Vegetation Location fell on level pad.

Good Drill Site? _____ Yes

Reference Stakes or Alternate Location
Stakes Set None

Best Accessibility to Location From North off county road

Distance & Direction

from Hwy Jct or Town From the Jct. of St. Hwy. 76 and St. Hwy. 37, go 1 mile South on St. Hwy. 76, then 1 mile West to the NW corner of Section 7, T9N - R4W.

ELEVATION:

1354' Gr. at Level Pad

DATUM: NAD-27

LAT: 35°16'26.8"N

LONG: 97°39'48.7"W

LAT: 35.274118512°N

LONG: 97.663530274°W

STATE PLANE

COORDINATES: (US Feet)

ZONE: OK SOUTH

X: 2100438

X: 2100450
Y: 706466

This information was gathered with a GPS receiver with ± 1 foot Horiz./Vert. accuracy.

Date of Drawing: August 5, 2019

Project # 124508E Date Staked: July 05, 2019 AL

FINAL AS-DRILLED PLAT

AS-DRILLED INFORMATION
FURNISHED BY EOG RESOURCES, INC.