

Oklahoma Corporation Commission
Oil & Gas Conservation Division
Post Office Box 52000
Oklahoma City, Oklahoma 73152-2000
Rule 165: 10-3-25

Form 1002A

API No.: 35045237620000

Completion Report

Spud Date: October 28, 2018

OTC Prod. Unit No.: 045-225641-0-0000

Drilling Finished Date: December 23, 2018

1st Prod Date: March 25, 2019

Completion Date: January 14, 2019

Drill Type: HORIZONTAL HOLE

Min Gas Allowable: Yes

Well Name: WEST HOG 30X31-19-25 2HC

Purchaser/Measurer: ENABLE

Location: ELLIS 30 19N 25W
NW NW NE NW
300 FNL 1620 FWL of 1/4 SEC
Latitude: 36.09973599 Longitude: -99.91118895
Derrick Elevation: 2453 Ground Elevation: 2432

First Sales Date: 3/25/19

Operator: FOURPOINT ENERGY LLC 23429

100 SAINT PAUL ST STE 400
DENVER, CO 80206-5140

Completion Type		Location Exception		Increased Density	
X	Single Zone	Order No		Order No	
	Multiple Zone	700969		682971	
	Commingled				

Casing and Cement							
Type	Size	Weight	Grade	Feet	PSI	SAX	Top of CMT
SURFACE	13 3/8	54.5	J-55	834	2600	835	SURFACE
INTERMEDIATE	7	29	P-110	8560	1600	670	SURFACE
PRODUCTION	4 1/2	13.5	P-110	19697	2800	1100	11381

Liner								
Type	Size	Weight	Grade	Length	PSI	SAX	Top Depth	Bottom Depth
There are no Liner records to display.								

Total Depth: 19701

Packer	
Depth	Brand & Type
There are no Packer records to display.	

Plug	
Depth	Plug Type
There are no Plug records to display.	

Initial Test Data

Test Date	Formation	Oil BBL/Day	Oil-Gravity (API)	Gas MCF/Day	Gas-Oil Ratio Cu FT/BBL	Water BBL/Day	Pumpin or Flowing	Initial Shut-In Pressure	Choke Size	Flow Tubing Pressure
May 17, 2019	CLEVELAND	359	46	791	2203	1525	PUMPING	725	64/64	320

Completion and Test Data by Producing Formation	
Formation Name: CLEVELAND	Code: 405CLVD
Class: GAS	

Spacing Orders	
Order No	Unit Size
161049	640
700968	MULTI UNIT

Perforated Intervals	
From	To
9600	19507

Acid Volumes	
262760 BBLs TOTAL FLUID PUMPED-PUMPDOWN-ACID	

Fracture Treatments	
8753860 LBS OF COMMON WHITE 100 MESH SAND & 1572740 LBS OF PREMIUM WHITE 40/70 MESH SAND. 271982 BBL TOTAL TREATED WATER+PUMPDOWN +ACID	

Formation	Top
CLEVELAND	8893

Were open hole logs run? No

Date last log run:

Were unusual drilling circumstances encountered? No

Explanation:

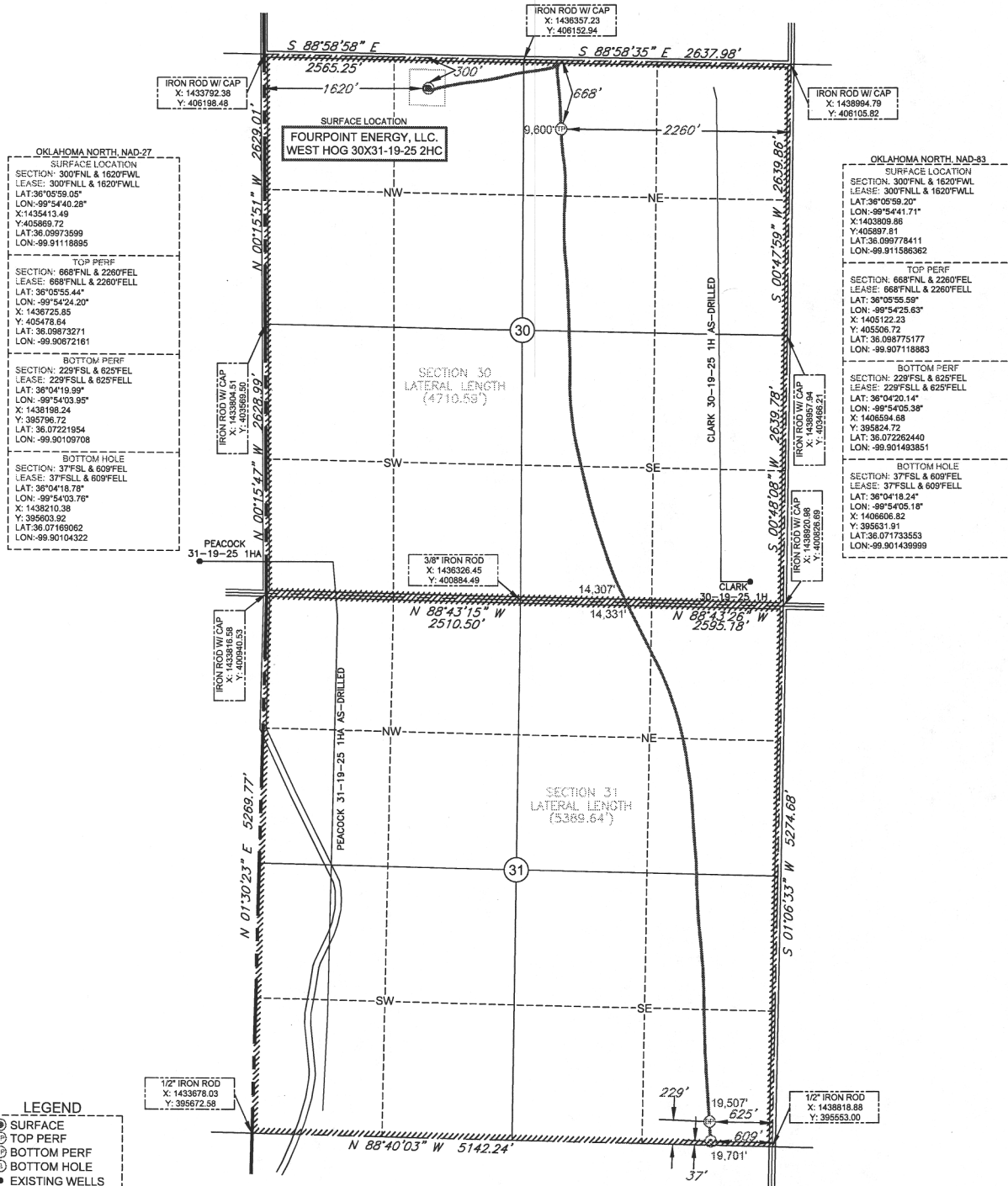
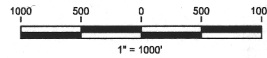
Other Remarks
There are no Other Remarks.

Lateral Holes
Sec: 31 TWP: 19N RGE: 25W County: ELLIS SW SE SE SE 37 FSL 609 FEL of 1/4 SEC Depth of Deviation: 8673 Radius of Turn: 691 Direction: 171 Total Length: 9943 Measured Total Depth: 19701 True Vertical Depth: 9207 End Pt. Location From Release, Unit or Property Line: 37

FOR COMMISSION USE ONLY	
Status: Accepted	1142704

AS-DRILLED PLAT

COMPANY: FOURPOINT ENERGY, LLC. LEASE NAME: WEST HOG 30X31-19-25 2HC
 SECTION: 30 TOWNSHIP: T-19-N RANGE: R-25-W FOOTAGES: 300'FNL & 1620'FWL
 COUNTY: ELLIS STATE: OK
 LATITUDE: 36°05'59.20" LONGITUDE: -99°54'41.71" ELEVATION: 2432'GR
 DIRECTION: ±5 MILES SOUTHWEST OF ARNETT, OK
 TOPOGRAPHY & VEGETATION: PAD
 BEST ACCESSIBILITY: FROM EXISTING LEASE ROAD



- LEGEND**
- SURFACE
 - ⊙ TOP PERF
 - ⊙ BOTTOM PERF
 - ⊙ BOTTOM HOLE
 - EXISTING WELLS
 - PROPOSED WELLS
 - ▤ LEASE LINE

FOURPOINT ENERGY

FILE: ORFS-8500-264

DATE: 4-18-19

SURVEYED BY: B.A.

DRAWN BY: K.Y.

CHECKED BY: C.L.

REVISION:

1	JKW	FIX DRILL PATH
2		
3		
4		
5		

I, Codi Lamberson, HEREBY STATE THAT THE LOCATION PLAT SHOWN HEREON IS TRUE AND CORRECT TO THE BEST OF MY KNOWLEDGE AND BELIEF AS SURVEYED BY ME OR UNDER MY SUPERVISION.

Codi Lamberson
 April 30, 2019
 Codi Lamberson, P.L.S. 1963
 SURVEYED ON THE GROUND: MAY 7, 2018



NOTE:
 BEARINGS, DISTANCES & COORDINATES BASED ON OKLAHOMA STATE
 PLANE COORDINATE SYSTEM
 GPS OBSERVATION, OK NORTH ZONE, NAD-27
 GRID, US SURVEY FEET

BORE PATH INFORMATION PROVIDED BY FOURPOINT ENERGY, LLC.
 OPEN RANGE FIELD SERVICES HAS NOT PERFORMED A SURVEY ON THE GROUND

OPEN RANGE
 (CA-7624 LS 7/31/2018)
 1503 S. BARNES, PAMPA, TX 79065
 O: 806.665.0770
 39350 IH-10 WEST, BOERNE, TX 78006
 O: 830.816.5009