

Oklahoma Corporation Commission
Oil & Gas Conservation Division
Post Office Box 52000
Oklahoma City, Oklahoma 73152-2000
Rule 165: 10-3-25

Form 1002A

API No.: 35037293810002

Completion Report

Spud Date: August 26, 2017

OTC Prod. Unit No.: 037-222523-0-3550

Drilling Finished Date: September 01, 2017

Amended

1st Prod Date: October 21, 2017

Amend Reason: RECOMPLETION AND CHANGE WELL NAME

Completion Date: October 09, 2017

Recomplete Date: June 27, 2019

Drill Type: STRAIGHT HOLE

Well Name: HEYBURN (HEYBURN BARTLESVILLE UNIT 10) 10

Purchaser/Measurer:

Location: CREEK 21 17N 9E
C N2 SE NE
990 FSL 1980 FWL of 1/4 SEC
Derrick Elevation: 0 Ground Elevation: 0

First Sales Date:

Operator: CARTLEDGE & CARTLEDGE OIL COMPANY INC 11750
PO BOX 40
435 N MAIN ST
KIEFER, OK 74041-0040

| Completion Type | | Location Exception | | Increased Density | |
|-----------------|---------------|---|--|--|--|
| X | Single Zone | Order No | | Order No | |
| | Multiple Zone | There are no Location Exception records to display. | | There are no Increased Density records to display. | |
| | Commingled | | | | |

| Casing and Cement | | | | | | | |
|-------------------|-------|--------|-------|------|-----|-----|------------|
| Type | Size | Weight | Grade | Feet | PSI | SAX | Top of CMT |
| SURFACE | 8 5/8 | | | 508 | | 290 | SURFACE |
| PRODUCTION | 5 1/2 | | | 2960 | | 160 | 1580 |

| Liner | | | | | | | | |
|--|------|--------|-------|--------|-----|-----|-----------|--------------|
| Type | Size | Weight | Grade | Length | PSI | SAX | Top Depth | Bottom Depth |
| There are no Liner records to display. | | | | | | | | |

Total Depth: 2960

| Packer | | Plug | |
|--------|-------------------|---------------------------------------|-----------|
| Depth | Brand & Type | Depth | Plug Type |
| 2850 | 5 1/2" 32A PACKER | There are no Plug records to display. | |

| Initial Test Data | | | | | | | | | | |
|-------------------|-----------|-------------|-------------------|-------------|-------------------------|---------------|-------------------|--------------------------|------------|----------------------|
| Test Date | Formation | Oil BBL/Day | Oil-Gravity (API) | Gas MCF/Day | Gas-Oil Ratio Cu FT/BBL | Water BBL/Day | Pumpin or Flowing | Initial Shut-In Pressure | Choke Size | Flow Tubing Pressure |
| Jul 08, 2019 | DUTCHER | 100 | 33.8 | 100 | 1000 | | PUMPING | 700 | | |

| Completion and Test Data by Producing Formation | | | |
|---|-----------|---|------------|
| Formation Name: DUTCHER | | Code: 403DTCR | Class: OIL |
| Spacing Orders | | Perforated Intervals | |
| Order No | Unit Size | From | To |
| NONE | | 2900 | 2910 |
| Acid Volumes | | Fracture Treatments | |
| NONE | | OIL FRAC, 10,000 POUNDS SAND, 7,854 GALLONS WATER | |

| Formation | Top |
|--------------|------|
| BARTLESVILLE | 2426 |
| DUTCHER | 2900 |

Were open hole logs run? No
Date last log run:

Were unusual drilling circumstances encountered? No
Explanation:

| Other Remarks |
|--|
| OCC - PER THE OPERATOR, THE BARTLESVILLE PERFORATIONS FROM 2,426' TO 2,518' WERE SQUEEZED OFF. |

| FOR COMMISSION USE ONLY | |
|-------------------------|---------|
| Status: Accepted | 1145464 |

OIL AND GAS CONSERVATION DIVISION
P.O. Box 52000
Oklahoma City, OK 73152-2000
405-522-0577
occentralprocessing@occ.ok.gov



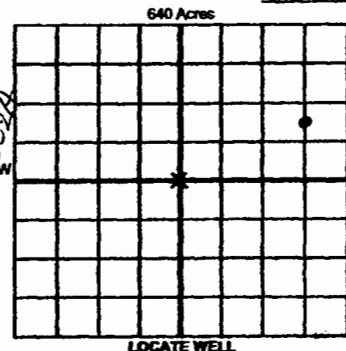
OKLAHOMA
Corporation
Commission

Form 1002A
Rev. 2009

-02

API NO. **037-29381**
OTC PROD. UNIT NO. **037-**

☒ ORIGINAL
☐ AMENDED (Reason) *Recompletion*
WELL COMPLETION REPORT
OAC 165-10-3-25 (PLEASE TYPE OR USE BLACK INK ONLY)
TYPE OF DRILLING OPERATION *change well name*
☒ STRAIGHT HOLE ☐ DIRECTIONAL HOLE ☐ HORIZONTAL HOLE
If directional or horizontal, see reverse for bottom hole location.
COUNTY *Creek* SEC *21* TWP *17N* RGE *9E*
LEASE NAME *Heyburn* WELL NO. *10* SPUD DATE *8-26-2017*
DATE OF WELL COMPLETION *10-9-2017*
1st PROD DATE *10-21-2017*
RECOMP DATE *6/27/19*
ELEVATION *Ground* FSL OF 1/4 SEC *990* FWL OF 1/4 SEC *1980*
Longitude (if known)
OPERATOR NAME *Cartledge + Cartledge Oil Co.* OTC/OCC OPERATOR NO. *11750*
ADDRESS *Po Box 40*
CITY *Kiefer* STATE *OK* ZIP *74041*



COMPLETION TYPE
☒ SINGLE ZONE *Dutcher*
☐ MULTIPLE ZONE
Application Date
COMINGLED
Application Date
LOCATION EXCEPTION
ORDER NO.
INCREASED DENSITY
ORDER NO.

| CASING & CEMENT (Attach Form 1002C) | | | | | | | |
|-------------------------------------|--------------|--------|-------|-------------|-----|-------------|----------------|
| TYPE | SIZE | WEIGHT | GRADE | FEET | PSI | SAX | TOP OF CMT |
| CONDUCTOR | | | | | | | |
| SURFACE | <i>8 5/8</i> | | | <i>508</i> | | <i>290</i> | <i>surface</i> |
| INTERMEDIATE | | | | | | | |
| PRODUCTION | <i>5 1/2</i> | | | <i>2960</i> | | <i>160</i> | <i>1580</i> |
| LINER | | | | | | | |
| TOTAL DEPTH | | | | | | <i>2960</i> | |

PACKER @ BRAND & TYPE PLUG @ TYPE PLUG @ TYPE
PACKER @ BRAND & TYPE PLUG @ TYPE PLUG @ TYPE

COMPLETION & TEST DATA BY PRODUCING FORMATION

| | | | | | | | |
|---|---|--|--|--|--|--|--------------------|
| FORMATION | <i>Dutcher</i> | | | | | | <i>New Frac</i> |
| SPACING & SPACING ORDER NUMBER | <i>none</i> | | | | | | <i>Reported to</i> |
| CLASS: Oil, Gas, Dry, Inj, Disp, Comm Disp, Svc | <i>oil</i> | | | | | | <i>Frac Focus</i> |
| PERFORATED INTERVALS | <i>2900</i> <i>2910</i> | | | | | | |
| ACID/VOLUME | <i>no</i> | | | | | | |
| FRACTURE TREATMENT (Fluids/Prop Amounts) | <i>oil frac</i> <i>10,000 # sand</i> <i>7854 gals water</i> | | | | | | |

☐ Min Gas Allowable (165-10-17-7) OR ☐ Gas Purchaser/Measurer First Sales Date
☐ Oil Allowable (165-10-13-3)

INITIAL TEST DATA

| | | | | | | |
|--------------------------|---------------------|--|--|--|--|--|
| INITIAL TEST DATE | <i>7/8/19</i> | | | | | |
| OIL-BBL/DAY | <i>100</i> | | | | | |
| OIL-GRAVITY (API) | <i>33.8</i> | | | | | |
| GAS-MCF/DAY | <i>100,000</i> | | | | | |
| GAS-OIL RATIO CU FT/BBL | <i>1000</i> | | | | | |
| WATER-BBL/DAY | <i>0</i> | | | | | |
| PUMPING OR FLOWING | <i>Both Pumping</i> | | | | | |
| INITIAL SHUT-IN PRESSURE | <i>700</i> | | | | | |
| CHOKE SIZE | <i>—</i> | | | | | |
| FLOW TUBING PRESSURE | | | | | | |

A record of the formations drilled through, and pertinent remarks are presented on the reverse. I declare that I have knowledge of the contents of this report and am authorized by my organization to make this report, which was prepared by me or under my supervision and direction, with the data and facts stated herein to be true, correct, and complete to the best of my knowledge and belief.

SIGNATURE *Allison Vila* NAME (PRINT OR TYPE) *7/20/20* DATE *918-321* PHONE NUMBER *3034*
ADDRESS *Po Box 40* CITY *Kiefer* STATE *OK* ZIP *74041* EMAIL ADDRESS *cartoil@sbcglobal.net*

PLEASE TYPE OR USE BLACK INK ONLY
FORMATION RECORD

Give formation names and tops, if available, or descriptions and thickness of formations drilled through. Show intervals cored or drillstem tested.

| NAMES OF FORMATIONS | TOP |
|---------------------|------|
| Bartlesville | 2426 |
| Dutcher | 2900 |

LEASE NAME

Heyburn

WELL NO.

10

FOR COMMISSION USE ONLY

ITD on file ☐ YES ☐ NO

APPROVED DISAPPROVED

2) Reject Codes

Were open hole logs run? ☐ yes ☒ no

Date Last log was run

Was CO₂ encountered? ☐ yes ☒ no at what depths?

Was H₂S encountered? ☐ yes ☒ no at what depths?

Were unusual drilling circumstances encountered?

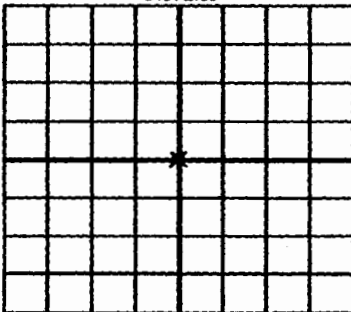
If yes, briefly explain below.

☐ yes ☒ no

Other remarks:

OCC-per the Operator the Bartlesville perforations from 2426 to 2518 was squeezed off.

640 Acres

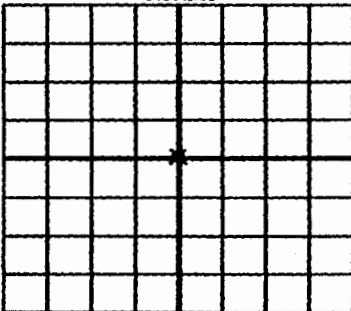


If more than three drainholes are proposed, attach a separate sheet indicating the necessary information.

Direction must be stated in degrees azimuth. Please note, the horizontal drainhole and its end point must be located within the boundaries of the lease or spacing unit.

Directional surveys are required for all drainholes and directional wells.

640 Acres



BOTTOM HOLE LOCATION FOR DIRECTIONAL HOLE

| | | | |
|----------------------|-----|---|--------|
| SEC | TWP | RGE | COUNTY |
| Spot Location | | Feet From 1/4 Sec Lines | |
| 1/4 | 1/4 | 1/4 | 1/4 |
| Measured Total Depth | | True Vertical Depth | |
| | | BHL From Lease, Unit, or Property Line: | |

BOTTOM HOLE LOCATION FOR HORIZONTAL HOLE: (LATERALS)

LATERAL #1

| | | | |
|----------------------|-----|---|-----------|
| SEC | TWP | RGE | COUNTY |
| Spot Location | | Feet From 1/4 Sec Lines | |
| 1/4 | 1/4 | 1/4 | 1/4 |
| Depth of Deviation | | Radius of Turn | Direction |
| Measured Total Depth | | True Vertical Depth | |
| | | BHL From Lease, Unit, or Property Line: | |

LATERAL #2

| | | | |
|----------------------|-----|---|-----------|
| SEC | TWP | RGE | COUNTY |
| Spot Location | | Feet From 1/4 Sec Lines | |
| 1/4 | 1/4 | 1/4 | 1/4 |
| Depth of Deviation | | Radius of Turn | Direction |
| Measured Total Depth | | True Vertical Depth | |
| | | BHL From Lease, Unit, or Property Line: | |

LATERAL #3

| | | | |
|----------------------|-----|---|-----------|
| SEC | TWP | RGE | COUNTY |
| Spot Location | | Feet From 1/4 Sec Lines | |
| 1/4 | 1/4 | 1/4 | 1/4 |
| Depth of Deviation | | Radius of Turn | Direction |
| Measured Total Depth | | True Vertical Depth | |
| | | BHL From Lease, Unit, or Property Line: | |