

Oklahoma Corporation Commission
Oil & Gas Conservation Division
Post Office Box 52000
Oklahoma City, Oklahoma 73152-2000
Rule 165: 10-3-25

Form 1002A

API No.: 35045237260000

Completion Report

Spud Date: August 07, 2018

OTC Prod. Unit No.: 045-224899

Drilling Finished Date: October 29, 2018

1st Prod Date: January 07, 2019

Completion Date: January 07, 2019

Drill Type: HORIZONTAL HOLE

Min Gas Allowable: Yes

Well Name: CARROLL 26 2H

Purchaser/Measurer: DCP MIDSTREAM

Location: ELLIS 35 18N 24W
NW NW NE NW
250 FNL 1600 FWL of 1/4 SEC
Derrick Elevation: 0 Ground Elevation: 0

First Sales Date: 01/07/2019

Operator: EOG RESOURCES INC 16231

3817 NW EXPRESSWAY STE 500
OKLAHOMA CITY, OK 73112-1483

Completion Type		Location Exception		Increased Density	
X	Single Zone	Order No		Order No	
	Multiple Zone	673719		672488	
	Commingled				

Casing and Cement							
Type	Size	Weight	Grade	Feet	PSI	SAX	Top of CMT
SURFACE	9 5/8	36	J-55	1055		355	SURFACE
PRODUCTION	7	29	P-110	8870		445	1721

Liner								
Type	Size	Weight	Grade	Length	PSI	SAX	Top Depth	Bottom Depth
LINER	4 1/2	11.6	P-110	5653	0	450	8641	14294

Total Depth: 14709

Packer	
Depth	Brand & Type
There are no Packer records to display.	

Plug	
Depth	Plug Type
There are no Plug records to display.	

Initial Test Data										
Test Date	Formation	Oil BBL/Day	Oil-Gravity (API)	Gas MCF/Day	Gas-Oil Ratio Cu FT/BBL	Water BBL/Day	Pumpin or Flowing	Initial Shut-In Pressure	Choke Size	Flow Tubing Pressure
Jan 11, 2019	MARMATON	586	44	937	1599	2350	FLOWING	720	56	360

Completion and Test Data by Producing Formation

Formation Name: MARMATON

Code: 404MRMN

Class: OIL

Spacing Orders

Order No	Unit Size
584952	640

Perforated Intervals

From	To
9742	14679

Acid Volumes

25,000 GALLONS 7.5% HCL TOTAL ACID

Fracture Treatments

3,386,030 GALLONS TOTAL FLUID, 2,466,247 POUNDS TOTAL PROPPANT

Formation	Top
MARMATON	9748

Were open hole logs run? No

Date last log run:

Were unusual drilling circumstances encountered? No

Explanation:

Other Remarks

WELL NAME CHANGED FROM THAT ON APPROVED PERMIT TO DRILL TO INCLUDE "26" IN LEASE NAME RATHER THAN WELL NUMBER. OCC - THIS DOCUMENT IS ACCEPTED BASED ON THE DATA SUBMITTED THE FINAL LOCATION EXCEPTION HAS NOT BEEN SUBMITTED. IT APPEARS THE COMPLETION INTERVAL MAY HAVE VIOLATED THE INTERIM ORDER AS TO DISTANCE FROM THE WEST LINE THIS WILL BE DEALT WITH ON THE FINAL LOCATION EXCEPTION HEARING.

Lateral Holes

Sec: 26 TWP: 18N RGE: 24W County: ELLIS

NW NW NE NW

175 FNL 1642 FWL of 1/4 SEC

Depth of Deviation: 8949 Radius of Turn: 1171 Direction: 2 Total Length: 4589

Measured Total Depth: 14709 True Vertical Depth: 9469 End Pt. Location From Release, Unit or Property Line: 175

FOR COMMISSION USE ONLY

1142021

Status: Accepted

EMAIL ADDRESS _____

PLEASE TYPE OR USE BLACK INK ONLY

FORMATION RECORD

Give formation names and tops, if available, or descriptions and thickness of formations drilled through. Show intervals cored or drillstem tested.

LEASE NAME _____

WELL NO. _____

NAMES OF FORMATIONS	TOP
MARMATON MD	9,748

FOR COMMISSION USE ONLY	
ITD on file	<input type="checkbox"/> YES <input type="checkbox"/> NO
APPROVED	DISAPPROVED
2) Reject Codes	

Were open hole logs run?	yes	<input checked="" type="checkbox"/> no
Date Last log was run	N/A	
Was CO ₂ encountered?	yes	<input checked="" type="checkbox"/> no at what depths? _____
Was H ₂ S encountered?	yes	<input checked="" type="checkbox"/> no at what depths? _____
Were unusual drilling circumstances encountered?	yes	<input checked="" type="checkbox"/> no
If yes, briefly explain below:		

Other remarks:

NAME CHANGED FROM THAT ON APPROVED PERMIT TO DRILL TO INCLUDE "26" IN LEASE NAME RATHER THAN WELL NO.

640 Acres

If more than three drainholes are proposed, attach a separate sheet indicating the necessary information.

Direction must be stated in degrees azimuth.
Please note, the horizontal drainhole and its end point must be located within the boundaries of the lease or spacing unit.

Directional surveys are required for all drainholes and directional wells.

640 Acres

BOTTOM HOLE LOCATION FOR DIRECTIONAL HOLE

SEC	TWP	RGE	COUNTY
Spot Location			
1/4	1/4	1/4	Feet From 1/4 Sec Lines
Measured Total Depth	True Vertical Depth	BHL From Lease, Unit, or Property Line:	

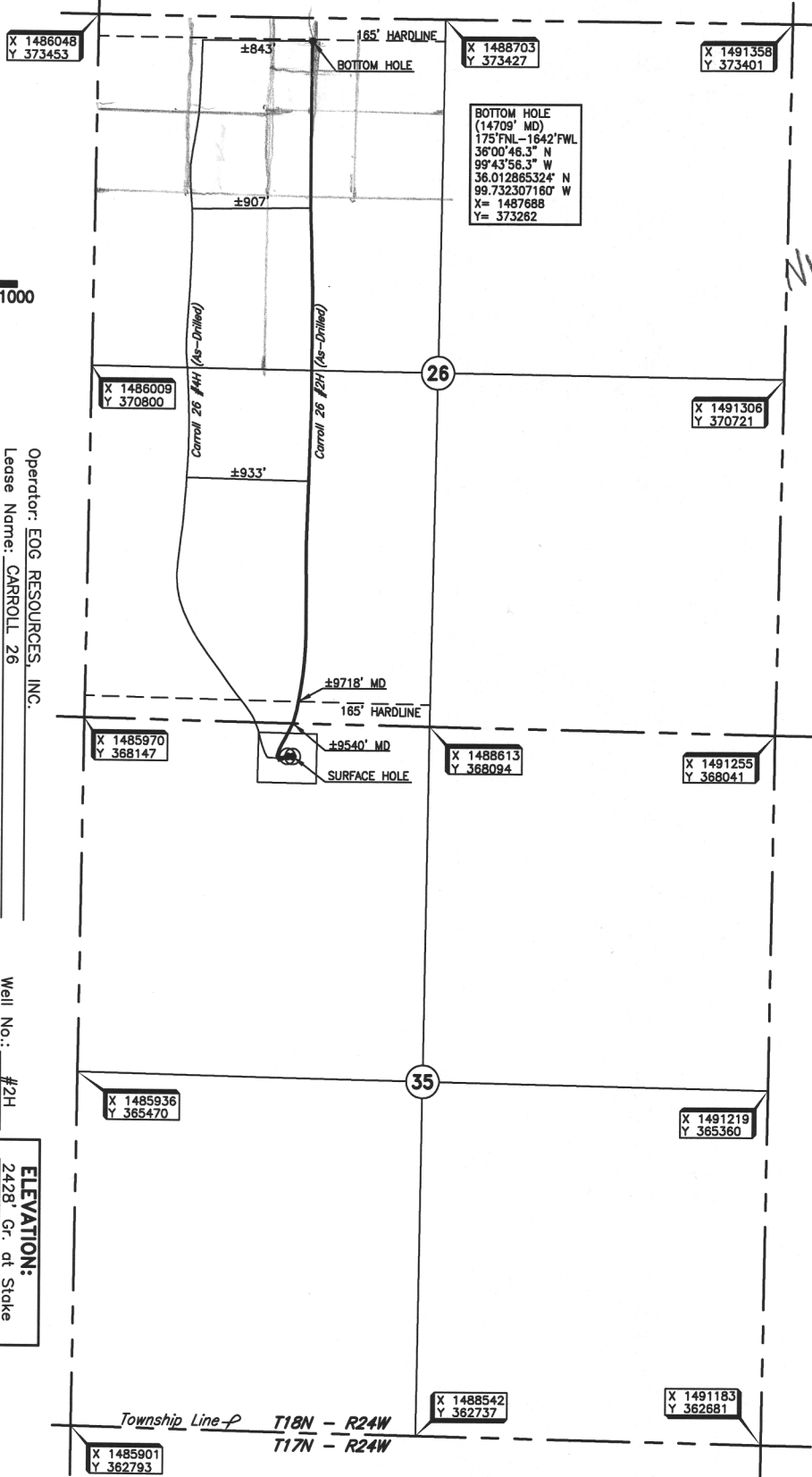
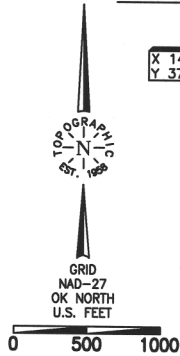
BOTTOM HOLE LOCATION FOR HORIZONTAL HOLE: (LATERALS)

LATERAL #1			
SEC	TWP	RGE	COUNTY
26	18N	24W	Ellis
Spot Location			
NW 1/4	NW 1/4	NE 1/4	NW 1/4
Depth of Deviation	8,949	Radius of Turn	1171
Measured Total Depth	14,709	Direction	2X
True Vertical Depth		Total Length	4,589
BHL From Lease, Unit, or Property Line:		175	

LATERAL #2			
SEC	TWP	RGE	COUNTY
Spot Location			
1/4	1/4	1/4	1/4
Depth of Deviation	Radius of Turn	Direction	Total Length
Measured Total Depth	True Vertical Depth	BHL From Lease, Unit, or Property Line:	

LATERAL #3			
SEC	TWP	RGE	COUNTY
Spot Location			
1/4	1/4	1/4	1/4
Depth of Deviation	Radius of Turn	Direction	Total Length
Measured Total Depth	True Vertical Depth	BHL From Lease, Unit, or Property Line:	

County, Oklahoma
 250' FNL - 1600' FWL Section 35 Township 18N Range 24W I.M.



Operator: EOG RESOURCES, INC.
 Lease Name: CARROLL 26
 Topography & Vegetation: Location fell in rolling sandy grass pasture.
 Good Drill Site? Yes
 Reference Stakes or Alternate Location: Stakes Set None
 Best Accessibility to Location: From West off lease road.
 Distance & Direction: From the Jct. of U.S. Hwy. 60 and U.S. Hwy. 283, go ±9.5 miles South, then ±1 mile East to the NW corner of Section 35, T18N - R24W.

ELEVATION:
 2428' Gr. at Stake

DATUM: NAD-27
 LAT: 35°59'52.9\"/>

306135 Date of Drawing: November 13, 2018
 Invoice # 285813 Date Staked: December 19, 2017 JP

FINAL AS-DRILLED PLAT

AS-DRILLED INFORMATION
 FURNISHED BY EOG RESOURCES, INC.