

Oklahoma Corporation Commission
Oil & Gas Conservation Division
Post Office Box 52000
Oklahoma City, Oklahoma 73152-2000
Rule 165: 10-3-25

Form 1002A

API No.: 35051244380001

Completion Report

Spud Date: October 06, 2018

OTC Prod. Unit No.: 051-224787

Drilling Finished Date: November 03, 2018

1st Prod Date: December 15, 2018

Completion Date: December 15, 2018

Drill Type: HORIZONTAL HOLE

Min Gas Allowable: Yes

Well Name: DESKINS 2932 4H

Purchaser/Measurer: ENABLE GATHERING &
PROCESSING

First Sales Date: 12/15/2018

Location: GRADY 29 8N 5W
SE NW NW NW
425 FNL 510 FWL of 1/4 SEC
Derrick Elevation: 0 Ground Elevation: 1325

Operator: EOG RESOURCES INC 16231

3817 NW EXPRESSWAY STE 500
OKLAHOMA CITY, OK 73112-1483

Completion Type		Location Exception		Increased Density	
X	Single Zone	Order No		Order No	
	Multiple Zone	687889		689178	
	Commingled			689179	

Casing and Cement							
Type	Size	Weight	Grade	Feet	PSI	SAX	Top of CMT
SURFACE	10 3/4	40.5	J-55	1008		385	SURFACE
PRODUCTION	5 1/2 X 7	20 / 32	P-110	20717		3273	10437

Liner								
Type	Size	Weight	Grade	Length	PSI	SAX	Top Depth	Bottom Depth
There are no Liner records to display.								

Total Depth: 20722

Packer		Plug	
Depth	Brand & Type	Depth	Plug Type
There are no Packer records to display.		There are no Plug records to display.	

Initial Test Data										
Test Date	Formation	Oil BBL/Day	Oil-Gravity (API)	Gas MCF/Day	Gas-Oil Ratio Cu FT/BBL	Water BBL/Day	Pumpin or Flowing	Initial Shut-In Pressure	Choke Size	Flow Tubing Pressure
Dec 22, 2018	WOODFORD	389	42	319	820	1891	FLOWING	2100	128	3009

Completion and Test Data by Producing Formation

Formation Name: WOODFORD

Code: 319WDFD

Class: OIL

Spacing Orders

Order No	Unit Size
683855	640
685999	640
687888	MULTIUNIT

Perforated Intervals

From	To
11675	20623

Acid Volumes

9,024 GALLONS 7.5% HCL TOTAL ACID

Fracture Treatments

12,711,080 GALLONS TOTAL FLUID, 17,404,128 POUNDS TOTAL PROPPANT
--

Formation	Top
WOODFORD	11441

Were open hole logs run? No

Date last log run:

Were unusual drilling circumstances encountered? No

Explanation:

Other Remarks

OCC - THIS DOCUMENT IS ACCEPTED BASED ON THE DATA SUBMITTED NEITHER THE FINAL LOCATION EXCEPTION NOR THE FINAL MULTIUNIT ORDERS HAVE BEEN ISSUED.

Lateral Holes

Sec: 32 TWP: 8N RGE: 5W County: GRADY

NW NE SE SW

1002 FSL 2288 FWL of 1/4 SEC

Depth of Deviation: 10590 Radius of Turn: 1166 Direction: 181 Total Length: 8966

Measured Total Depth: 20722 True Vertical Depth: 11489 End Pt. Location From Release, Unit or Property Line: 1002

FOR COMMISSION USE ONLY

1142026

Status: Accepted

API NO. 051-24438
OTC PROD. UNIT NO. 051-224787

PLEASE TYPE OR USE BLACK INK ONLY
NOTE:

Attach copy of original 1002A
if recompletion or reentry.

OKLAHOMA CORPORATION COMMISSION
Oil & Gas Conservation Division
Post Office Box 52000
Oklahoma City, Oklahoma 73152-2000
Rule 165:10-3-25

RECEIVED

Form 1002A
Rev. 2009

FEB 01 2019

OKLAHOMA CORPORATION
COMMISSION

640 Acres

☒ ORIGINAL
☐ AMENDED (Reason)

TYPE OF DRILLING OPERATION

☐ STRAIGHT HOLE ☐ DIRECTIONAL HOLE ☒ HORIZONTAL HOLE
☐ SERVICE WELL

If directional or horizontal, see reverse for bottom hole location.

COUNTY	Grady	SEC	29	TWP	8N	RGE	5W	SPUD DATE	10/6/18
LEASE NAME	DESKINS 2932				WELL NO.	4H	DRLG FINISHED DATE	11/3/2018	
SE 1/4 NW 1/4 NW 1/4 NW 1/4	FNL 1/4 SEC	425	FWL OF 1/4 SEC	510	DATE OF WELL COMPLETION	12/15/2018			
ELEVATION N Derrick FL	Ground	1325	Latitude (if known)		1st PROD DATE	12/15/2018			
RECOMP DATE					Longitude (if known)				
OPERATOR NAME	EOG Resources, Inc.				OTC/OCC OPERATOR NO.	16231			
ADDRESS	3817 NW Expressway, Suite 500								
CITY	Oklahoma City	STATE	OK	ZIP	73112				

X									

LOCATE WELL

COMPLETION TYPE

<input checked="" type="checkbox"/> SINGLE ZONE
<input type="checkbox"/> MULTIPLE ZONE
Application Date
COMMINGLED
Application Date
LOCATION EXCEPTION ORDER
INCREASED DENSITY ORDER NO.

CASING & CEMENT (Form 1002C must be attached)

TYPE	SIZE	WEIGHT	GRADE	FEET	PSI	SAX	TOP OF CMT
CONDUCTOR							
SURFACE	10 3/4	40.5	J-55	1,008		385	SURFACE
INTERMEDIATE							
PRODUCTION * Tapered String	5 1/2 x 7	20/32	P-110	20,717		3,273	10,437
LINER							
				TOTAL DEPTH	20,722		

PACKER @ _____ BRAND & TYPE _____ PLUG @ _____ TYPE _____ PLUG @ _____ TYPE _____
PACKER @ _____ BRAND & TYPE _____ PLUG @ _____ TYPE _____ PLUG @ _____ TYPE _____

COMPLETION & TEST DATA BY PRODUCING FORMATION

FORMATION	WOODFORD						
SPACING & SPACING ORDER NUMBER	640/683855, 685999						
CLASS: Oil, Gas, Dry, Inj, Disp, Comm Disp, Svc	Dil						
PERFORATED INTERVALS	11,675 - 20,623						
ACID/VOLUME	TOTAL ACID - 9024 GALS 7.5% HCL						
FRACTURE TREATMENT (Fluids/Prop Amounts)	TOTAL FLUID - 12,711,080 GALS TOTAL PROP - 17,404,128 LBS						

Min Gas Allowable (165:10-17-7)

☒ OR

Oil Allowable (165:10-13-3)

Gas Purchaser/Measurer

First Sales Date

Enable Gathering & Processing

12/15/2018

INITIAL TEST DATA

INITIAL TEST DATE	12/22/2018						
OIL-BBL/DAY	389						
OIL-GRAVITY (API)	42						
GAS-MCF/DAY	319						
GAS-OIL RATIO CU FT/BBL	820						
WATER-BBL/DAY	1891						
PUMPING OR FLOWING	FLOWING						
INITIAL SHUT-IN PRESSURE	2100						
CHOKE SIZE	128						
FLOW TUBING PRESSURE	3009						

AS SUBMITTED

A record of the formations drilled through, and pertinent remarks are presented on the reverse. I declare that I have knowledge of the contents of this report and am authorized by my organization to make this report which was prepared by me or under my supervision and direction, with the data and facts stated herein to be true, correct, and complete to the best of my knowledge and belief.

SIGNATURE	Joni Reeder	NAME (PRINT OR TYPE)	Joni Reeder	DATE	405-246-3100
ADDRESS	3817 NW Expressway, Suite 500	CITY	Oklahoma City	STATE	OK
		ZIP	73112	EMAIL ADDRESS	joni_reeder@eogresources.com

PLEASE TYPE OR USE BLACK INK ONLY
FORMATION RECORD

Give formation names and tops, if available, or descriptions and thickness of formations drilled through. Show intervals cored or drillstem tested.

LEASE NAME _____

WELL NO. _____

NAMES OF FORMATIONS	TOP
WOODFORD MD	11,441

FOR COMMISSION USE ONLY	
ITD on file <input type="checkbox"/> YES <input type="checkbox"/> NO	
APPROVED _____	DISAPPROVED _____
2) Reject Codes	

Were open hole logs run?	yes	<input checked="" type="checkbox"/> no
Date Last log was run	N/A	
Was CO ₂ encountered?	yes	<input checked="" type="checkbox"/> no at what depths? _____
Was H ₂ S encountered?	yes	<input checked="" type="checkbox"/> no at what depths? _____
Were unusual drilling circumstances encountered?	yes	<input checked="" type="checkbox"/> no
If yes, briefly explain below:		

Other remarks:

640 Acres

If more than three drainholes are proposed, attach a separate sheet indicating the necessary information.

Direction must be stated in degrees azimuth.
Please note, the horizontal drainhole and its end point must be located within the boundaries of the lease or spacing unit.

Directional surveys are required for all drainholes and directional wells.

640 Acres

BOTTOM HOLE LOCATION FOR DIRECTIONAL HOLE

SEC	TWP	RGE	COUNTY
Spot Location			
1/4	1/4	1/4	1/4
Measured Total Depth	True Vertical Depth	BHL From Lease, Unit, or Property Line:	

BOTTOM HOLE LOCATION FOR HORIZONTAL HOLE: (LATERALS)

LATERAL #1

SEC	32	TWP	8N	RGE	5W	COUNTY	Grady
Spot Location							
NW	1/4	NE	1/4	SE	1/4	SW	1/4
Depth of Deviation		10,590		Radius of Turn		1,166	
Measured Total Depth		20,722		True Vertical Depth		11,489	
Feet From 1/4 Sec Lines		181		FSL		1,002	
Total Length		8,966		BHL From Lease, Unit, or Property Line:		1,002	

LATERAL #2

SEC	TWP	RGE	COUNTY
Spot Location			
1/4	1/4	1/4	1/4
Depth of Deviation	Radius of Turn		Direction
Measured Total Depth	True Vertical Depth		Total Length
BHL From Lease, Unit, or Property Line:			

LATERAL #3

SEC	TWP	RGE	COUNTY
Spot Location			
1/4	1/4	1/4	1/4
Depth of Deviation	Radius of Turn		Direction
Measured Total Depth	True Vertical Depth		Total Length
BHL From Lease, Unit, or Property Line:			

GRADY

County, Oklahoma

425' FNL-510' FWL Section 29 Township 8N Range 5W I.M.



Operator: EOG RESOURCES, INC.
 Lease Name: DESKINS 2932
 Topography & Vegetation Conductor on level pad
 Good Drill Site? Yes
 Reference Stakes or Alternate Location
 Stakes Set None
 Best Accessibility to Location From West off county road
 Distance & Direction
 from Hwy Jct or Town From Tuttle, Oklahoma, go ± 6 miles East on St. Hwy 37, then ± 8 miles South, ± 3 miles West, ± 2 miles South to the Northwest Corner of Section 29, T8N-R5W.

Well No.: 4H

ELEVATION:
1321' Gr. at Level Pad

X 2072239
Y 649052

X 2072228
Y 659625

X 2072231
Y 656672

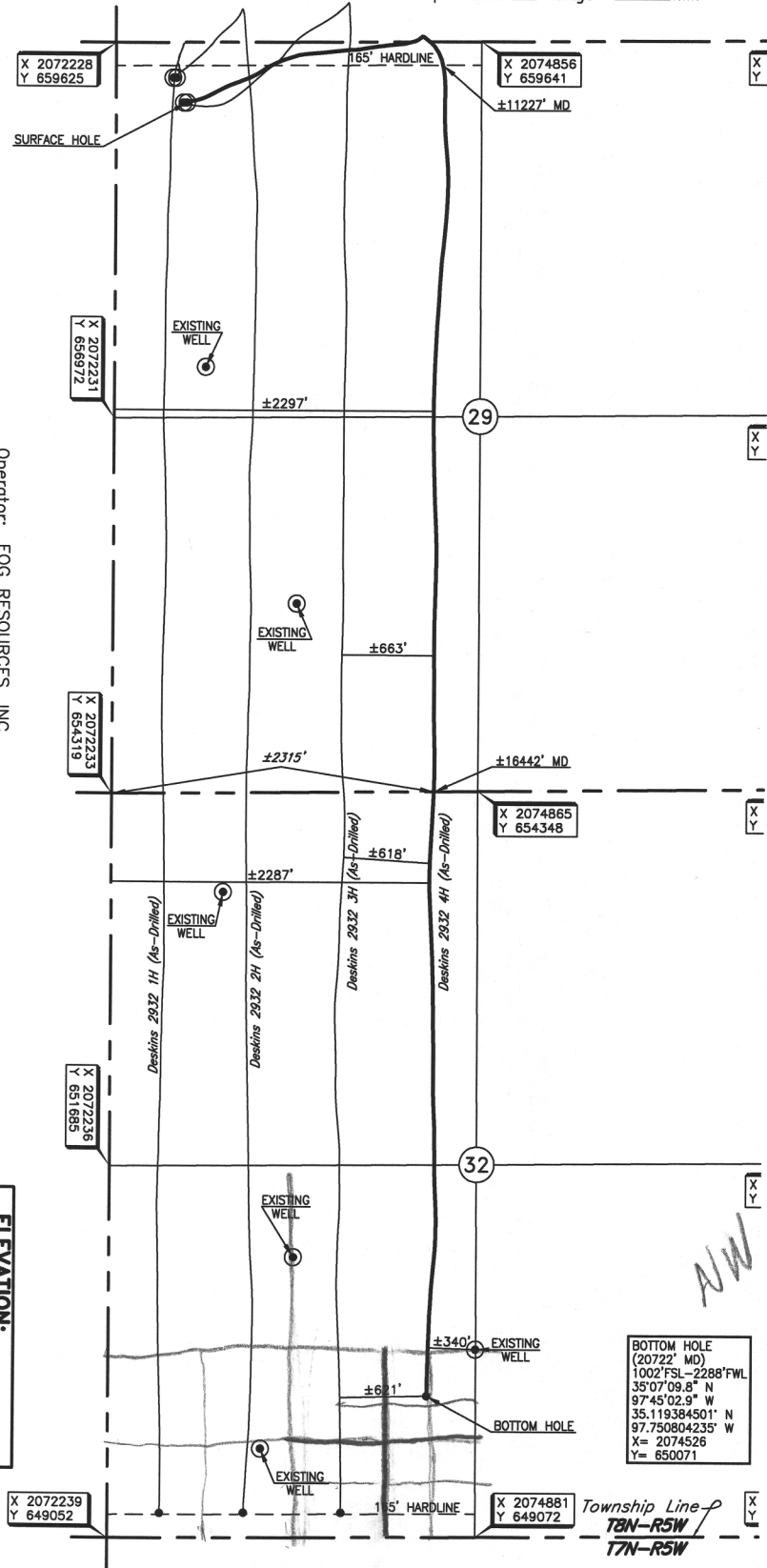
X 2072233
Y 654319

X 2072236
Y 651665

X 2074856
Y 659641

X 2074865
Y 654348

X 2074881
Y 649072



BOTTOM HOLE
 (20722' MD)
 1002' FSL-2288' FWL
 35°07'09.8" N
 97°45'02.9" W
 35.119384501° N
 97.750804235° W
 X= 2074526
 Y= 650071

(accuracy of receiver was gathered with 1 ft with 1 ft accuracy)

DATUM: NAD-27
 LAT: 35°08'40.1" N
 LONG: 97°45'24.1" W
 LAT: 35.144486042° N
 LONG: 97.756705114° W
 STATE PLANE
 COORDINATES (US FEET):
 ZONE: OK SOUTH
 X: 2072739
 Y: 659203

306017 Date of Drawing: Oct. 31, 2018
 Invoice # 300827B Date Staked: August 16, 2018 JP

FINAL AS-DRILLED PLAT

AS-DRILLED INFORMATION
 FURNISHED BY EOG RESOURCES, INC.