

Oklahoma Corporation Commission
Oil & Gas Conservation Division
Post Office Box 52000
Oklahoma City, Oklahoma 73152-2000
Rule 165: 10-3-25

Form 1002A

API No.: 35045237110001

Completion Report

Spud Date: September 23, 2018

OTC Prod. Unit No.: 045-224897

Drilling Finished Date: October 11, 2018

1st Prod Date: January 02, 2019

Completion Date: January 02, 2019

Drill Type: HORIZONTAL HOLE

Min Gas Allowable: Yes

Well Name: ROBERTA 35 4H

Purchaser/Measurer: DCP MIDSTREAM

Location: ELLIS 2 17N 24W
SE NE NW NE
635 FNL 1460 FEL of 1/4 SEC
Derrick Elevation: 0 Ground Elevation: 2418

First Sales Date: 01/03/2019

Operator: EOG RESOURCES INC 16231

3817 NW EXPRESSWAY STE 500
OKLAHOMA CITY, OK 73112-1483

Completion Type	
X	Single Zone
	Multiple Zone
	Commingled

Location Exception	
Order No	
665721	
678972	

Increased Density	
Order No	
665303	

Casing and Cement							
Type	Size	Weight	Grade	Feet	PSI	SAX	Top of CMT
SURFACE	9 5/8	36	J-55	1508		760	SURFACE
PRODUCTION	7	29	P-110	8898		440	1690

Liner								
Type	Size	Weight	Grade	Length	PSI	SAX	Top Depth	Bottom Depth
LINER	4 1/2	11.6	P-110	6536	0	500	8658	15194

Total Depth: 15212

Packer		Plug	
Depth	Brand & Type	Depth	Plug Type
There are no Packer records to display.		There are no Plug records to display.	

Initial Test Data										
Test Date	Formation	Oil BBL/Day	Oil-Gravity (API)	Gas MCF/Day	Gas-Oil Ratio Cu FT/BBL	Water BBL/Day	Pumpin or Flowing	Initial Shut-In Pressure	Choke Size	Flow Tubing Pressure
Jan 12, 2019	MARMATON	239	44	81	339	484	FLOWING	400	64	1180

Completion and Test Data by Producing Formation

Formation Name: MARMATON

Code: 404MRMN

Class: OIL

Spacing Orders

Order No	Unit Size
610233	640

Perforated Intervals

From	To
10365	15183

Acid Volumes

24,000 GALLONS 7.5% HCL TOTAL ACID

Fracture Treatments

4,705,008 GALLONS SLICKWATER TOTAL FLUID, 5,809,699 POUNDS TOTAL PROPPANT
--

Formation	Top
MARMATON	9757

Were open hole logs run? No

Date last log run:

Were unusual drilling circumstances encountered? No

Explanation:

Other Remarks

WELL NAME CHANGED FROM THAT ON APPROVED PERMIT TO DRILL TO INCLUDE "35" IN LEASE NAME RATHER THAN WELL NUMBER. OCC - THIS DOCUMENT IS ACCEPTED BASED ON THE DATA SUBMITTED THE FINAL LOCATION EXCEPTION HAS NOT BEEN SUBMITTED.

Lateral Holes

Sec: 35 TWP: 18N RGE: 24W County: ELLIS

SW NE NE NE

385 FNL 439 FEL of 1/4 SEC

Depth of Deviation: 9044 Radius of Turn: 1045 Direction: 1 Total Length: 5123

Measured Total Depth: 15212 True Vertical Depth: 9496 End Pt. Location From Release, Unit or Property Line: 385

FOR COMMISSION USE ONLY

1142020

Status: Accepted

PLEASE TYPE OR USE BLACK INK ONLY
NOTE:

Attach copy of original 1002A
if recompletion or reentry.

OKLAHOMA CORPORATION COMMISSION
Oil & Gas Conservation Division
Post Office Box 52000
Oklahoma City, Oklahoma 73152-2000
Rule 165:10-3-25

RECEIVED

Form 1002A
Rev. 2009

FEB 01 2019

**Oklahoma Corporation
Commission**

X	ORIGINAL
	AMENDED (Reason)

COMPLETION REPORT

TYPE OF DRILLING OPERATION

☐ STRAIGHT HOLE ☐ DIRECTIONAL HOLE ☒ HORIZONTAL HOLE
☐ SERVICE WELL

If directional or horizontal, see reverse for bottom hole location.


COUNTY	Ellis	SEC	2	TWP	17N	RGE	24W	DATE OF WELL COMPLETION	1/2/2019	
LEASE NAME	ROBERTA 35				WELL NO.	4H	1st PROD DATE			1/2/2019
SE 1/4	NE 1/4	NW 1/4	NE 1/4	FNL	635	FEL	1460	RECOMP DATE		
ELEVATION	Ground				2418	Latitude (if known)		Longitude (if known)		
OPERATOR NAME	EOG Resources, Inc.					OTC/OCC OPERATOR NO.		16231		
ADDRESS		3817 NW Expressway, Suite 500								
CITY	Oklahoma City				STATE	OK	ZIP	73112		

640 Acres

A 10x10 grid with a thick horizontal line at row 5 and a thick vertical line at column 5. The intersection is labeled 'X'. The label 'W' is at the left edge of row 5, and 'E' is at the top edge of column 5.

LOCATE WELL

COMPLETION TYPE

X	SINGLE ZONE	
	MULTIPLE ZONE	
	Application Date	
	COMMINGLED	
	Application Date	
LOCATION		665721, 678972 
EXCEPTION ORDER		
INCREASED DENSITY ORDER NO.		665303

CASING & CEMENT (Form 1002C must be attached)

TYPE	SIZE	WEIGHT	GRADE	FEET	PSI	SAX	TOP OF CMT
CONDUCTOR							
SURFACE	9 5/8	36	J-55	1508		760	SURFACE
INTERMEDIATE	7	29	P-110	8,898		440	1,690
PRODUCTION							
LINER	4 1/2	11.6	P-110	8658 - 15,194		500	8,658
PLUG @	TYPE	PLUG @	TYPE	TOTAL DEPTH		15,212	

PACKER @	BRAND & TYPE	PLUG @	TYPE	PLUG @	TYPE
PACKER @	BRAND & TYPE	PLUG @	TYPE	PLUG @	TYPE

COMPLETION & TEST DATA BY PRODUCING FORMATION

FORMATION	MARMATON					<i>Reported to Frac Fo</i>
SPACING & SPACING ORDER NUMBER	640/610233					
CLASS: Oil, Gas, Dry, Inj, Disp, Comm Disp, Svc	OIL					
PERFORATED INTERVALS						
	10,365 - 15,183					
ACID/VOLUME	TOTAL ACID - 24,000 GALS 7.5% HCL					
FRACTURE TREATMENT (Fluids/Prop Amounts)						
	TOTAL FLUID - 4,705,008 GALS SLICKWATER					
	TOTAL PROP - 5,809,699 LBS					

Reported to Four Focus

Min Gas Allowable (165:10-17-7)

☒ OR

Oil Allowable (165:10-13-3)

Gas Purchaser/Measurer
First Sales Date

DCP Midstream
1/3/2019

INITIAL TEST DATA

INITIAL TEST DATE	1/12/2019				
OIL-BBL/DAY	239				
OIL-GRAVITY (API)	44				
GAS-MCF/DAY	81				
GAS-OIL RATIO CU FT/BBL	339				
WATER-BBL/DAY	484				
PUMPING OR FLOWING	FLOWING				
INITIAL SHUT-IN PRESSURE	400				
CHOKE SIZE	64				
FLOW TUBING PRESSURE	1180				

AS SUBMITTED

A record of the formations drilled through, and pertinent remarks are presented on the reverse. I declare that I have knowledge of the contents of this report and am authorized by my organization to make this report, which was prepared by me or under my supervision and direction, with the data and facts stated herein to be true, correct, and complete to the best of my knowledge and belief.

SIGNATURE

Joni Reeder

1/28/2019

405-246-3100

3817 NW Expressway, Suite 500

Oklahoma City

NAME (PRINT OR TYPE)

DATE _____

PHONE NUMBER _____

ADDRESS

CITY

STATE

ZIP

ioni_reeder@eogresources.com

EMAIL ADDRESS

PLEASE TYPE OR USE BLACK INK ONLY

FORMATION RECORD

Give formation names and tops, if available, or descriptions and thickness of formations drilled through. Show intervals cored or drillstem tested.

LEASE NAME _____

WELL NO. _____

NAMES OF FORMATIONS	TOP
MARMATON MD	9,757

FOR COMMISSION USE ONLY	
ITD on file <input type="checkbox"/> YES <input type="checkbox"/> NO	
APPROVED _____	DISAPPROVED _____
2) Reject Codes	

Were open hole logs run?	yes <input type="checkbox"/> no <input checked="" type="checkbox"/>
Date Last log was run	N/A
Was CO ₂ encountered?	yes <input type="checkbox"/> no <input checked="" type="checkbox"/> at what depths? _____
Was H ₂ S encountered?	yes <input type="checkbox"/> no <input checked="" type="checkbox"/> at what depths? _____
Were unusual drilling circumstances encountered?	yes <input type="checkbox"/> no <input checked="" type="checkbox"/>
If yes, briefly explain below: _____	

Other remarks:

NAME CHANGED FROM THAT ON APPROVED PERMIT TO DRILL TO INCLUDE "35" IN LEASE NAME RATHER THAN WELL NO.

640 Acres

1

If more than three drainholes are proposed, attach a separate sheet indicating the necessary information.

Direction must be stated in degrees azimuth.
Please note, the horizontal drainhole and its end point must be located within the boundaries of the lease or spacing unit.

Directional surveys are required for all drainholes and directional wells.

640 Acres

--

BOTTOM HOLE LOCATION FOR DIRECTIONAL HOLE

SEC	TWP	RGE	COUNTY
Spot Location	1/4	1/4	1/4
Measured Total Depth	True Vertical Depth	BHL From Lease, Unit, or Property Line:	

BOTTOM HOLE LOCATION FOR HORIZONTAL HOLE: (LATERALS)

LATERAL #1

SEC	TWP	RGE	COUNTY
35	18N	24W	Ellis
Spot Location	NE 1/4	NE 1/4	NE 1/4
Depth of Deviation	9,044	Radius of Turn	1,045
Measured Total Depth	15,212	True Vertical Depth	9,496
Feet From 1/4 Sec Lines	FNL 385	FEL 439	
Direction	1.35	Total Length	5,123
BHL From Lease, Unit, or Property Line:	385		

LATERAL #2

SEC	TWP	RGE	COUNTY
Spot Location	1/4	1/4	1/4
Depth of Deviation	Radius of Turn	Direction	Total Length
Measured Total Depth	True Vertical Depth	BHL From Lease, Unit, or Property Line:	

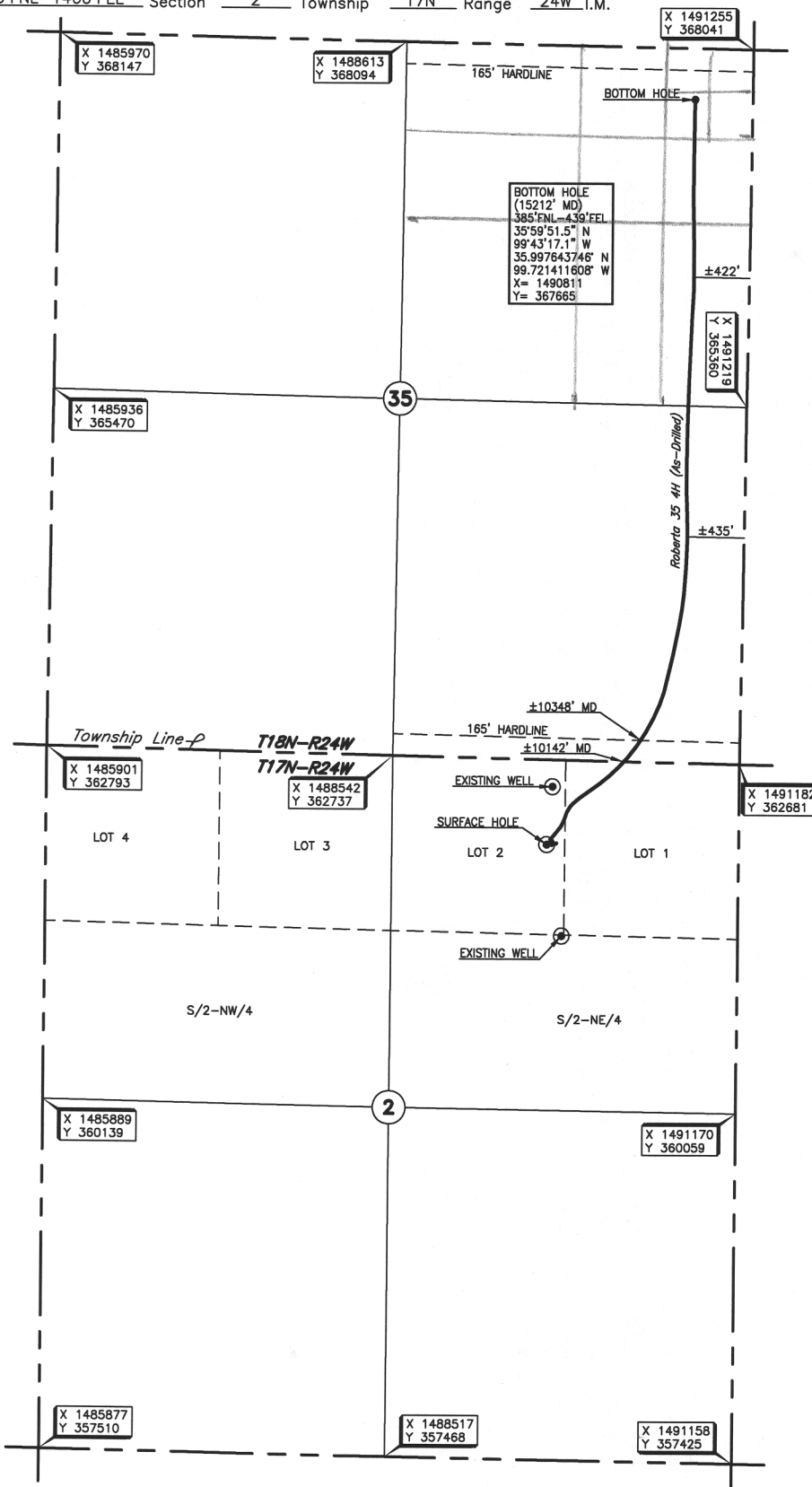
LATERAL #3

SEC	TWP	RGE	COUNTY
Spot Location	1/4	1/4	1/4
Depth of Deviation	Radius of Turn	Direction	Total Length
Measured Total Depth	True Vertical Depth	BHL From Lease, Unit, or Property Line:	

ELLIS County, Oklahoma
 635' FNL-1460' FEL Section 2 Township 17N Range 24W I.M.



Operator: EOG RESOURCES, INC.
 Lease Name: ROBERTA 35
 Topography & Vegetation Loc. fell in sandy grass pasture, ± 436' SW. of existing well.
 Well No.: 4H
 ELEVATION: 2416' Gr. at Stake
 Good Drill Site? Yes
 Best Accessibility to Location From the junction of US Hwy 283 S. & US Hwy 60/St. Hwy 51, East of Arnett, Oklahoma, go Distance & Direction
 From Hwy Jct or Town From South off county road
 Reference Stakes or Alternate Location Stakes Set None
 ± 10.5 miles South on US Hwy 283, then ± 2 miles East to the Northeast Corner of Section 2, T17N-R24W.



DATUM: NAD-27
 LAT: 35°58'56.1" N
 LONG: 99°43'29.2" W
 LAT: 35.982242432° N
 LONG: 99.724765674° W
 STATE PLANE
 COORDINATES (US FEET):
 ZONE: OK NORTH
 X: 1489720
 Y: 362077

304985 Date of Drawing: Oct. 16, 2018
 Invoice # 288137 Date Staked: Apr. 26, 2017 JP

FINAL AS-DRILLED PLAT

AS-DRILLED INFORMATION
 FURNISHED BY EOG RESOURCES, INC.

This information was gathered with a GPS receiver with a horizontal accuracy of ± 1 foot.