

Oklahoma Corporation Commission
Oil & Gas Conservation Division
Post Office Box 52000
Oklahoma City, Oklahoma 73152-2000
Rule 165: 10-3-25

Form 1002A

API No.: 35045237250000

Completion Report

Spud Date: August 05, 2018

OTC Prod. Unit No.: 045-224900

Drilling Finished Date: October 13, 2018

1st Prod Date: January 07, 2019

Completion Date: January 07, 2019

Drill Type: HORIZONTAL HOLE

Min Gas Allowable: Yes

Well Name: CARROLL 26 4H

Purchaser/Measurer: DCP MIDSTREAM

Location: ELLIS 35 18N 24W
NW NW NE NW
250 FNL 1560 FWL of 1/4 SEC
Derrick Elevation: 0 Ground Elevation: 2429

First Sales Date: 01/07/2019

Operator: EOG RESOURCES INC 16231

3817 NW EXPRESSWAY STE 500
OKLAHOMA CITY, OK 73112-1483

Completion Type		Location Exception		Increased Density	
X	Single Zone	Order No		Order No	
	Multiple Zone	674555		672488	
	Commingled				

Casing and Cement							
Type	Size	Weight	Grade	Feet	PSI	SAX	Top of CMT
SURFACE	9 5/8	36	J-55	1055		355	SURFACE
PRODUCTION	7	29	P-110	8880		445	3000

Liner								
Type	Size	Weight	Grade	Length	PSI	SAX	Top Depth	Bottom Depth
LINER	4 1/2	11.6	P-110	6295	0	470	8638	14933

Total Depth: 14933

Packer	
Depth	Brand & Type
There are no Packer records to display.	

Plug	
Depth	Plug Type
There are no Plug records to display.	

Initial Test Data										
Test Date	Formation	Oil BBL/Day	Oil-Gravity (API)	Gas MCF/Day	Gas-Oil Ratio Cu FT/BBL	Water BBL/Day	Pumpin or Flowing	Initial Shut-In Pressure	Choke Size	Flow Tubing Pressure
Jan 11, 2019	MARMATON	293	44	414	1413	1298	FLOWING	750	56	260

Completion and Test Data by Producing Formation

Formation Name: MARMATON

Code: 404MRMN

Class: OIL

Spacing Orders

Order No	Unit Size
584952	640

Perforated Intervals

From	To
9810	14917

Acid Volumes

26,092 GALLONS TOTAL ACID

Fracture Treatments

5,715,654 GALLONS TOTAL FLUID, 7,687,740 POUNDS TOTAL PROPPANT

Formation	Top
MARMATON	9595

Were open hole logs run? No

Date last log run:

Were unusual drilling circumstances encountered? No

Explanation:

Other Remarks

WELL NAME CHANGED FROM THAT ON APPROVED PERMIT TO DRILL TO INCLUDE "26" IN LEASE NAME RATHER THAN WELL NUMBER. OCC - THIS DOCUMENT IS ACCEPTED BASED ON THE DATA SUBMITTED THE FINAL LOCATION EXCEPTION HAS NOT BEEN SUBMITTED.

Lateral Holes

Sec: 26 TWP: 18N RGE: 24W County: ELLIS

NW NE NW NW

179 FNL 799 FWL of 1/4 SEC

Depth of Deviation: 8880 Radius of Turn: 865 Direction: 2 Total Length: 5188

Measured Total Depth: 14933 True Vertical Depth: 9477 End Pt. Location From Release, Unit or Property Line: 179

FOR COMMISSION USE ONLY

1142022

Status: Accepted

RECEIVED

FEB 01 2019

Oklahoma Corporation
Commission

Form 1002A
Rev. 2009

API NO. 045-23725
OTC PROD. UNIT NO. 045-224900

PLEASE TYPE OR USE BLACK INK ONLY
NOTE:

Attach copy of original 1002A
if recompletion or reentry.

OKLAHOMA CORPORATION COMMISSION
Oil & Gas Conservation Division
Post Office Box 52000
Oklahoma City, Oklahoma 73152-2000
Rule 165:10-3-25

☒ ORIGINAL
☐ AMENDED (Reason) _____

COMPLETION REPORT

TYPE OF DRILLING OPERATION

☐ STRAIGHT HOLE ☐ DIRECTIONAL HOLE ☒ HORIZONTAL HOLE
☐ SERVICE WELL

If directional or horizontal, see reverse for bottom hole location.

COUNTY	Ellis	SEC	35	TWP	18N	RGE	24W	SPUD DATE	8/5/2018	
LEASE NAME	CARROLL 26			WELL NO.	4H			DRLG FINISHED DATE	10/13/2018	
NW 1/4 NW 1/4 NE 1/4 NW 1/4	FNL 1/4 SEC 250			FWL OF 1/4 SEC	1560			DATE OF WELL COMPLETION	1/7/2019	
ELEVATION N Derrick	Ground	2429	Latitude (if known)			Longitude (if known)			1st PROD DATE	1/7/2019
OPERATOR NAME	EOG Resources, Inc.				OTC/OCC OPERATOR NO.	16231				
ADDRESS	3817 NW Expressway, Suite 500									
CITY	Oklahoma City	STATE	OK	ZIP	73112					

640 Acres

LOCATE WELL

COMPLETION TYPE

<input checked="" type="checkbox"/> SINGLE ZONE	
<input type="checkbox"/> MULTIPLE ZONE	
Application Date	
COMINGLED Application Date	
LOCATION EXCEPTION ORDER	674555 <i>5.0</i>
INCREASED DENSITY ORDER NO.	672488

CASING & CEMENT (Form 1002C must be attached)

TYPE	SIZE	WEIGHT	GRADE	FEET	PSI	SAX	TOP OF CMT
CONDUCTOR							
SURFACE	9 5/8	36	J-55	1,055		355	SURFACE
INTERMEDIATE	7	29	P-110	8,880		445	3,000
PRODUCTION							
LINER	4 1/2	11.6	P-110	<i>8638</i> 14,933		470	8,638
						TOTAL DEPTH	14,933

PACKER @ _____ BRAND & TYPE _____ PLUG @ _____ TYPE _____ PLUG @ _____ TYPE _____
PACKER @ _____ BRAND & TYPE _____ PLUG @ _____ TYPE _____ PLUG @ _____ TYPE _____

COMPLETION & TEST DATA BY PRODUCING FORMATION - *404 MARMATON*

FORMATION	MARMATON						
SPACING & SPACING ORDER NUMBER	640/584952						
CLASS: Oil, Gas, Dry, Inj, Disp, Comm Disp, Svc	OIL						
PERFORATED INTERVALS	9,810 - 14,917						
ACID/VOLUME	TOTAL ACID - 26,092 GALS						
FRACTURE TREATMENT (Fluids/Prop Amounts)	TOTAL FLUID - 5,715,654 GALS						
	TOTAL PROP - 7,687,740 LBS						

Monitor Report to Face Focus

☒ Min Gas Allowable (165:10-17-7)
OR
☐ Oil Allowable (165:10-13-3)

Gas Purchaser/Measurer
First Sales Date

DCP Midstream
1/7/2019

INITIAL TEST DATA

INITIAL TEST DATE	1/11/2019						
OIL-BBL/DAY	293						
OIL-GRAVITY (API)	44						
GAS-MCF/DAY	414						
GAS-OIL RATIO CU FT/BBL	1413						
WATER-BBL/DAY	1298						
PUMPING OR FLOWING	FLOWING						
INITIAL SHUT-IN PRESSURE	750						
CHOKE SIZE	56						
FLOW TUBING PRESSURE	260						

AS SUBMITTED

A record of the formations drilled through, and pertinent remarks are presented on the reverse. I declare that I have knowledge of the contents of this report and am authorized by my organization to make this report, which was prepared by me or under my supervision and direction, with the data and facts stated herein to be true, correct, and complete to the best of my knowledge and belief.

Joni Reeder
SIGNATURE NAME (PRINT OR TYPE) DATE PHONE NUMBER
3817 NW Expressway, Suite 500 Oklahoma City OK 73112
ADDRESS CITY STATE ZIP
EMAIL ADDRESS joni_reeder@eogresources.com

PLEASE TYPE OR USE BLACK INK ONLY

FORMATION RECORD

Give formation names and tops, if available, or descriptions and thickness of formations drilled through. Show intervals cored or drillstem tested.

LEASE NAME _____

WELL NO. _____

NAMES OF FORMATIONS		TOP
MARMATON	MD	9,595

FOR COMMISSION USE ONLY	
ITD on file	<input type="checkbox"/> YES <input type="checkbox"/> NO
APPROVED	DISAPPROVED
2) Reject Codes	

Were open hole logs run?	yes	<input checked="" type="checkbox"/> no
Date Last log was run	N/A	
Was CO ₂ encountered?	yes	<input checked="" type="checkbox"/> no at what depths? _____
Was H ₂ S encountered?	yes	<input checked="" type="checkbox"/> no at what depths? _____
Were unusual drilling circumstances encountered?	yes	<input checked="" type="checkbox"/> no
If yes, briefly explain below:		

Other remarks:

NAME CHANGED FROM THAT ON APPROVED PERMIT TO DRILL TO INCLUDE "26" IN LEASE NAME RATHER THAN WELL NO.

640 Acres

If more than three drainholes are proposed, attach a separate sheet indicating the necessary information.

Direction must be stated in degrees azimuth.
Please note, the horizontal drainhole and its end point must be located within the boundaries of the lease or spacing unit.

Directional surveys are required for all drainholes and directional wells.

640 Acres

BOTTOM HOLE LOCATION FOR DIRECTIONAL HOLE

SEC	TWP	RGE	COUNTY
Spot Location			
1/4	1/4	1/4	1/4
Measured Total Depth		True Vertical Depth	BHL From Lease, Unit, or Property Line:

BOTTOM HOLE LOCATION FOR HORIZONTAL HOLE: (LATERALS)

LATERAL #1

SEC	TWP	RGE	COUNTY
26	18N	24W	Ellis
Spot Location			
NW 1/4	NE 1/4	NW 1/4	NW 1/4
Depth of Deviation		Radius of Turn	Direction
8,880		865	2, 1/2
Measured Total Depth		True Vertical Depth	Total Length
14,933		9,477	5,188
			BHL From Lease, Unit, or Property Line:
			179

LATERAL #2

SEC	TWP	RGE	COUNTY
Spot Location			
1/4	1/4	1/4	1/4
Depth of Deviation		Radius of Turn	Direction
Measured Total Depth		True Vertical Depth	Total Length
			BHL From Lease, Unit, or Property Line:

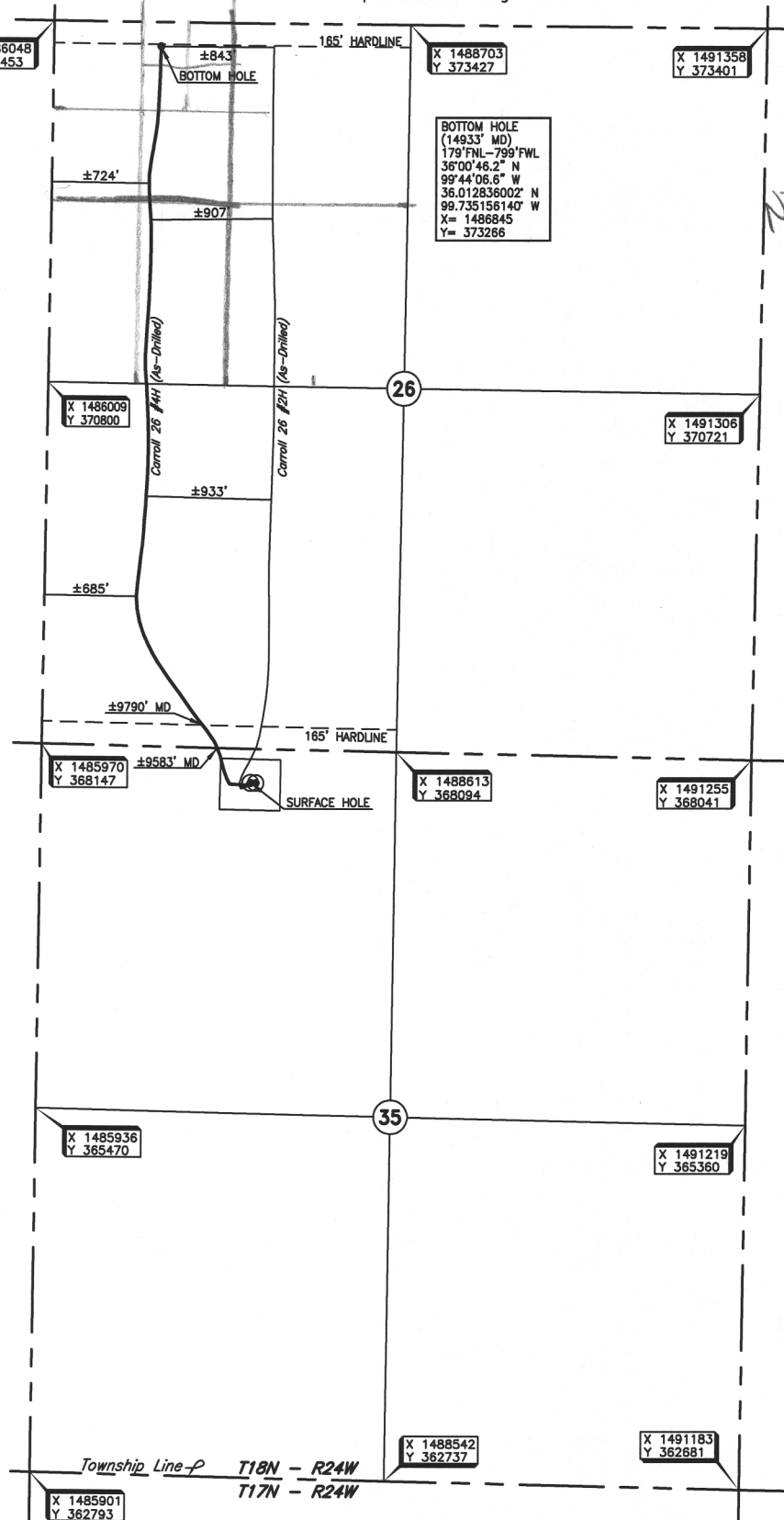
LATERAL #3

SEC	TWP	RGE	COUNTY
Spot Location			
1/4	1/4	1/4	1/4
Depth of Deviation		Radius of Turn	Direction
Measured Total Depth		True Vertical Depth	Total Length
			BHL From Lease, Unit, or Property Line:

13800 WIRELESS WAY, OKLA. CITY, OKLA. 73134 * LOCAL (405) 843-4847 * OUT OF STATE (800) 654-3219
Certificate of Authorization No. 1293 LS

County, Oklahoma

250'FNL - 1560'FWL, Section 35 Township 18N Range 24W I.M.



NW NE NW NW

Operator: EOG RESOURCES, INC. Well No.: #4H **ELEVATION:**
 Lease Name: CARROLL 26 2429' Gr. at Stake
 Topography & Vegetation Location fell in rolling sandy grass pasture.
 Good Drill Site? Yes Reference Stakes or Alternate Location
 Stakes Set None
 Best Accessibility to Location From West off lease road.
 Distance & Direction From the jct. of U.S. Hwy. 60 and U.S. Hwy. 283, go ±9.5 miles South, then ±1 mile East
 from Hwy jct or town to the NW corner of Section 35, T18N - R24W.

DATUM: NAD-27
 LAT: 35°59'52.9"N
 LONG: 99°43'57.1"W
 LAT: 35.998035739°N
 LONG: 99.732525464°W
 STATE PLANE
 COORDINATES: (US Feet)
 ZONE: OK NORTH
 X: 1487527
 Y: 367866

Invoice # 306136 Date of Drawing: November 13, 2018
 285813A Date Staked: December 19, 2017 JP

AS-DRILLED INFORMATION
FURNISHED BY EOG RESOURCES, INC.