

Oklahoma Corporation Commission
Oil & Gas Conservation Division
Post Office Box 52000
Oklahoma City, Oklahoma 73152-2000
Rule 165: 10-3-25

Form 1002A

API No.: 35123074290004

Completion Report

Spud Date: June 28, 1936

OTC Prod. Unit No.:

Drilling Finished Date: July 28, 1936

Amended

1st Prod Date: July 28, 1936

Amend Reason: PLUG AND ABANDON WELLBORE

Completion Date: August 12, 1936

Recomplete Date: October 09, 2019

Drill Type: STRAIGHT HOLE

Well Name: FITTS WEST UNIT 14-7

Purchaser/Measurer:

Location: PONTOTOC 30 2N 7E
NW NW SE NE
1105 FSL 1600 FWL of 1/4 SEC
Derrick Elevation: 758 Ground Elevation: 0

First Sales Date:

Operator: SHERIDAN PRODUCTION COMPANY LLC 22220

1360 POST OAK BLVD STE 2500
HOUSTON, TX 77056-3030

Completion Type		Location Exception		Increased Density	
X	Single Zone	Order No		Order No	
	Multiple Zone	There are no Location Exception records to display.		There are no Increased Density records to display.	
	Commingled				

Casing and Cement							
Type	Size	Weight	Grade	Feet	PSI	SAX	Top of CMT
SURFACE	12 1/2	50		520		500	SURFACE
PRODUCTION	6 5/8	24		3328		1200	1000

Liner								
Type	Size	Weight	Grade	Length	PSI	SAX	Top Depth	Bottom Depth
There are no Liner records to display.								

Total Depth: 3631

Packer	
Depth	Brand & Type
There are no Packer records to display.	

Plug	
Depth	Plug Type
620	CEMENT
1100	CEMENT
1735	CIBP
2395	CIBP

Initial Test Data

Test Date	Formation	Oil BBL/Day	Oil-Gravity (API)	Gas MCF/Day	Gas-Oil Ratio Cu FT/BBL	Water BBL/Day	Pumpin or Flowing	Initial Shut- In Pressure	Choke Size	Flow Tubing Pressure
-----------	-----------	----------------	----------------------	----------------	----------------------------	------------------	----------------------	---------------------------------	---------------	-------------------------

There are no Initial Data records to display.

Completion and Test Data by Producing Formation

Formation Name: CROMWELL

Code: 402CMWL

Class: PLUG AND ABANDON

Spacing Orders

Order No	Unit Size
There are no Spacing Order records to display.	

Perforated Intervals

From	To
2450	2592

Acid Volumes

There are no Acid Volume records to display.
--

Fracture Treatments

There are no Fracture Treatments records to display.
--

Formation	Top
SEE PREVIOUS	0

Were open hole logs run? No

Date last log run:

Were unusual drilling circumstances encountered? No

Explanation:

Other Remarks

PLUGGED AS OF OCTOBER 9, 2019. RIH SET 6-5/8" CIBP @ 2,395' BAIL DUMP 20' CEMENT TO 2,375'. RIH WITH 2-7/8" TUBING TO 2,365'. RIH WITH 6-5/8" CIBP, SET @ 1,735', BAIL DUMP 20' CEMENT ON TOP TO 1,715'. EOT @ 1,100'; MIX 40 SACKS CLASS H NEAT CEMENT; CEMENT PLUG FROM 866' - 1,100'. RIH WITH 3-1/8" PERFORATING GUN; TAG CEMENT @ 882'; PERFORATED 6-5/8" @ 620' - 621'; PUMPED 20 BARRELS FW, MIX 560 SACKS CLASS H NEAT CEMENT; TAG TOP OF CEMENT @ 108'. FILL 7" CASING WITH 160 GALLONS CONCRETE, CAP WELL. WITNESSED BY DEL LYNCH - OCC. INJECTION ORDER NUMBER 153622 TERMINATED.

FOR COMMISSION USE ONLY

1144153

Status: Accepted

API NO. 12307429
OTC PROD. UNIT NO.

(PLEASE TYPE OR USE BLACK INK ONLY)

OKLAHOMA CORPORATION COMMISSION
Oil & Gas Conservation Division
Post Office Box 52000
Oklahoma City, Oklahoma 73152-2000
Rule 165:10-3-25

RECEIVED

Form 1002A
Rev. 2009

NOV 12 2019

OKLAHOMA CORPORATION COMMISSION

ORIGINAL
☒ AMENDED (Reason)

P&A WELLBORE

COMPLETION REPORT

TYPE OF DRILLING OPERATION

☒ STRAIGHT HOLE ☐ DIRECTIONAL HOLE ☐ HORIZONTAL HOLE
☐ SERVICE WELL

If directional or horizontal, see reverse for bottom hole location.

COUNTY	PONTOTOC	SEC	30	TWP	2N	RGE	7E	SPUD DATE	6/28/1936	
LEASE NAME	FITTS WEST UNIT						WELL NO.	14-7	DRLG FINISHED DATE	7/28/1936
NW 1/4 NW 1/4 SE 1/4 NE 1/4		FSL OF 1/4 SEC	1105	FWL OF 1/4 SEC		1600	DATE OF WELL COMPLETION	8/12/1936	1st PROD DATE	7/28/1936
ELEVATION Derrick FL	758	Ground	Latitude (if known)				Longitude (if known)		RECOMP DATE	10/09/2019
OPERATOR NAME	SHERIDAN PRODUCTION COMPANY LLC						OTC / OCC OPERATOR NO.	22220		
ADDRESS	1360 POST OAK BLVD., STE 2500									
CITY	HOUSTON			STATE	TX	ZIP	77056			

LOCATE WELL

COMPLETION TYPE

<input checked="" type="checkbox"/> SINGLE ZONE	
<input type="checkbox"/> MULTIPLE ZONE	
Application Date	
<input type="checkbox"/> COMMINGLED	
Application Date	
LOCATION EXCEPTION ORDER NO.	
INCREASED DENSITY ORDER NO.	

CASING & CEMENT (Attach Form 1002C)

TYPE	SIZE	WEIGHT	GRADE	FEET	PSI	SAX	TOP OF CMT
CONDUCTOR							
SURFACE	12-1/2	50		520		500	Surface
INTERMEDIATE							
PRODUCTION	6-5/8	24		3328		1200	1000
LINER							

PACKER @ _____ BRAND & TYPE _____ PLUG @ 620 TYPE CEM PLUG @ 1100 TYPE CEM
PACKER @ _____ BRAND & TYPE _____ PLUG @ 1735 TYPE CIBP PLUG @ 2395 TYPE CIBP

TOTAL DEPTH 3328

3631 Per Original 1002A

COMPLETION & TEST DATA BY PRODUCING FORMATION

FORMATION	CROMWELL					
SPACING & SPACING ORDER NUMBER	153622					
CLASS: Oil, Gas, Dry, Inj, Disp, Comm Disp, Svc	PLA DRY					
PERFORATED INTERVALS	2450					
	2592					
ACID VOLUME						
FRACTURE TREATMENT (Fluids/Prop Amounts)						

Min Gas Allowable (165:10-17-7)

Gas Purchaser/Measurer

OR

First Sales Date

Oil Allowable (165:10-13-3)

INITIAL TEST DATA

INITIAL TEST DATE	INJ					
OIL-BBL/DAY						
OIL-GRAVITY (API)						
GAS-MCF/DAY						
GAS-OIL RATIO CU FT/BBL						
WATER-BBL/DAY						
PUMPING OR FLOWING						
INITIAL SHUT-IN PRESSURE						
CHOKE SIZE						
FLOW TUBING PRESSURE						

AS SUBMITTED

A record of the formations drilled through, and pertinent remarks are presented on the reverse. I declare that I have knowledge of the contents of this report and am authorized by my organization to make this report, which was prepared by me or under my supervision and direction, with the data and facts stated herein to be true, correct, and complete to the best of my knowledge and belief.

Signature	JOYCE A WILLIAMS	DATE	11/4/2019	PHONE NUMBER	713-548-1070
1360 POST OAK BLVD., STE 2500	HOUSTON TX 77056	jwilliams@sheridanproduction.com			
ADDRESS	CITY	STATE	ZIP	EMAIL ADDRESS	

TYPE SR USE BEACH II FORMATION RECORD

LEASE NAME FITTS WEST UNIT

WELL NO. 14-7

NAMES OF FORMATIONS	TOP
SEE PREVIOUS	

FOR COMMISSION USE ONLY	
ITD on file	<input type="checkbox"/> YES <input type="checkbox"/> NO
APPROVED	DISAPPROVED
2) Reject Codes	

Were open hole logs run? _____ yes _____ no

Date Last log was run _____

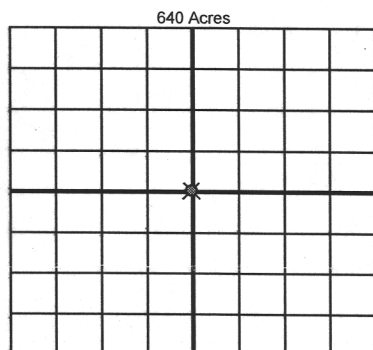
Was CO₂ encountered? _____ yes _____ no at what depths? _____

Was H₂S encountered? _____ yes _____ no at what depths? _____

Were unusual drilling circumstances encountered? _____ yes _____ no

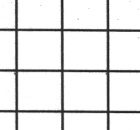
If yes, briefly explain below

Other remarks:	PLUGGED AS OF 10/09/19. RIH SET 6-5/8" CIBP @ 2395' BAIL DUMP 20' CEMENT TO 2375'. RIH w/2-7/8" TBG TO 2365'. RIH w/6-5/8" CIBP, SET @ 1735', BAIL DUMP 20' CEMENT ON TOP TO 1715'. EOT @ 1100'; MIX 40 SX CL H NEAT CEMENT; CEMENT PLUG FROM 866-1100'. RIH w 3-1/8" PERF GUN; TAG CMT @ 882'; PERF 6-5/8" @ 620-621'; PUMP 20 BBLS FW, MIX 560 SX CL H NEAT CEMENT; TAG TOC @ 108'. FILL 7" CSG w/160 GALS CONCRETE, CAP WELL. WITNESSED BY DEL LYNCH - OCC
	INJ ORDER #153622 TERMINATED.



Direction must be stated in degrees azimuth.
Please note, the horizontal drainhole and its end point must be located within the boundaries of the lease or spacing unit.

640 Acres



SEC	TWP	RGE	COUNTY			
Spot Location			Feet From 1/4 Sec Lines		FSL	FWL
1/4	1/4	1/4	1/4			
Measured Total Depth		True Vertical Depth		BHL From Lease, Unit, or Property Line:		

LATERAL #1						
SEC	TWP	RGE	COUNTY			
Spot Location						
1/4	1/4	1/4	Feet From 1/4 Sec Lines	FSL		FWL
Depth of Deviation		Radius of Turn	Direction	Total Length		
Measured Total Depth		True Vertical Depth	BHL From Lease, Unit, or Property Line:			

SEC	TWP	RGE	COUNTY						
Spot Location		1/4	1/4	1/4	1/4	Feet From 1/4 Sec Lines	FSL		FWL
Depth of Deviation		Radius of Turn		Direction		Total Length			
Measured Total Depth		True Vertical Depth		BHL From Lease, Unit, or Property Line:					

SEC	TWP	RGE	COUNTY			
Spot Location			Feet From 1/4 Sec Lines	FSL		FWL
1/4	1/4	1/4	1/4			
Depth of Deviation		Radius of Turn	Direction	Total Length		
Measured Total Depth		True Vertical Depth	BHL From Lease, Unit, or Property Line:			