

Oklahoma Corporation Commission  
Oil & Gas Conservation Division  
Post Office Box 52000  
Oklahoma City, Oklahoma 73152-2000  
Rule 165: 10-3-25

Form 1002A

API No.: 35063248650000

**Completion Report**

Spud Date: December 21, 2018

OTC Prod. Unit No.: 063-225914-0-0000

Drilling Finished Date: February 10, 2019

1st Prod Date: August 08, 2019

Completion Date: August 08, 2019

**Drill Type:** HORIZONTAL HOLE

Well Name: LETTY 4-3/34H

Purchaser/Measurer: NEXTERA ENERGY POWER  
MARKETING

First Sales Date: 8/8/2019

Location: HUGHES 3 6N 10E  
SE NW NE SW  
2165 FSL 1798 FWL of 1/4 SEC  
Latitude: 35.020041666 Longitude: -96.24126944  
Derrick Elevation: 890 Ground Elevation: 867

Operator: TRINITY OPERATING USG LLC 23879

1717 S BOULDER AVE STE 201  
TULSA, OK 74119-4842

Completion Type		Location Exception		Increased Density	
X	Single Zone	Order No		Order No	
	Multiple Zone	671611		690782	
	Commingled			690783	

Casing and Cement							
Type	Size	Weight	Grade	Feet	PSI	SAX	Top of CMT
SURFACE	13.375	48	H-40	210		165	SURFACE
INTERMEDIATE	9.625	36	J-55	3251		225	SURFACE
PRODUCTION	5.5	20	P-110	12882		1410	2703

Liner								
Type	Size	Weight	Grade	Length	PSI	SAX	Top Depth	Bottom Depth
There are no Liner records to display.								

**Total Depth: 12909**

Packer	
Depth	Brand & Type
There are no Packer records to display.	

Plug	
Depth	Plug Type
There are no Plug records to display.	

Initial Test Data
-------------------

Test Date	Formation	Oil BBL/Day	Oil-Gravity (API)	Gas MCF/Day	Gas-Oil Ratio Cu FT/BBL	Water BBL/Day	Pumpin or Flowing	Initial Shut-In Pressure	Choke Size	Flow Tubing Pressure
Aug 19, 2019	WOODFORD			2114		1454	FLOWING		FULL	760

#### Completion and Test Data by Producing Formation

Formation Name: WOODFORD

Code: 319WDFD

Class: GAS

#### Spacing Orders

Order No	Unit Size
671387	MULTIUNIT
626818	640
628077	640

#### Perforated Intervals

From	To
5561	12764

#### Acid Volumes

51,996 TOTAL GALS ACID
------------------------

#### Fracture Treatments

10,740,786 TOTAL GALS SLICKWATER
7,867,637 TOTAL LBS SAND

Formation	Top
BOOCH COAL	2664
MIDDLE BOOCH	2817
LOWER BOOCH	2884
HARTSHORNE	3029
ATOKA	3100
GILCREASE SANSTONE	3714
SPIRO SANDSTONE	4112
WAPANUCKA LIMESTONE	4232
UNION VALLEY	4451
CROMWELL	4515
JEFFERSON	4696
FALSE CANEY	4892
CANEY	5081
MAYES	5346
WOODFORD	5346

Were open hole logs run? No

Date last log run:

Were unusual drilling circumstances encountered? No

Explanation:

#### Other Remarks

OCC – THIS DOCUMENT IS ACCEPTED BASED ON DATA SUBMITTED, THE FINAL LOCATION EXCEPTION FOR ORDER 671611 HAS NOT BEEN ISSUED.

OCC – THIS DOCUMENT IS ACCEPTED BASED ON DATA SUBMITTED, THE FINAL MULTIUNIT HORIZONTAL WELL FOR ORDER 671387 HAS NOT BEEN ISSUED.

#### Lateral Holes

Sec: 34 TWP: 7N RGE: 10E County: HUGHES

SW SW NE NW

1158 FNL 1497 FWL of 1/4 SEC

Depth of Deviation: 4946 Radius of Turn: 400 Direction: 358 Total Length: 7334

Measured Total Depth: 12909 True Vertical Depth: 5314 End Pt. Location From Release, Unit or Property Line: 1158

**FOR COMMISSION USE ONLY**

Status: Accepted

1144069

12-1-2019

Oklahoma Corporation Commission  
Oil & Gas Conservation Division  
Post Office Box 52000  
Oklahoma City, Oklahoma 73152-2000  
Rule 165: 10-3-25

Form 1002A

**1002A**  
**Addendum**

API No.: 063248650000

## Completion Report

Spud Date: December 21, 2018

OTC Prod. Unit No.: 063-225914-0-0000

Drilling Finished Date: February 10, 2019

1st Prod Date: August 08, 2019

Completion Date: August 08, 2019

Drill Type: HORIZONTAL HOLE

Well Name: LETTY 4-3/34H

Location: HUGHES 3 6N 10E  
SE NW NE SW  
2165 FSL 1798 FWL of 1/4 SEC  
Latitude: 35.020041666 Longitude: -96.24126944  
Derrick Elevation: 890 Ground Elevation: 867

Operator: TRINITY OPERATING USG LLC 23879

1717 S BOULDER AVE STE 201  
TULSA, OK 74119-4842

Purchaser/Measurer: NEXTERA ENERGY POWER MARKETING

First Sales Date: 8/8/2019

Multinut

Sec 3 - 44.8008% 225914 I

Sec 34 - 55.1192% 225914 AI

D. J. J.

Completion Type	
X	Single Zone
	Multiple Zone
	Commingle

Location Exception	
Order No	
671611	

Increased Density	
Order No	
690782	
690783	

Casing and Cement							
Type	Size	Weight	Grade	Feet	PSI	SAX	Top of CMT
SURFACE	13.375	48	H-40	210		165	SURFACE
INTERMEDIATE	9.625	36	J-55	3251		225	SURFACE
PRODUCTION	5.5	20	P-110	12882		1410	2703

Liner								
Type	Size	Weight	Grade	Length	PSI	SAX	Top Depth	Bottom Depth
There are no Liner records to display.								

Total Depth: 12909

Packer	
Depth	Brand & Type
There are no Packer records to display.	

Plug	
Depth	Plug Type
There are no Plug records to display.	

Initial Test Data
-------------------

8-11-2019

317 WDFD

1 XMT - Shale

December 13, 2019

1 of 3

E2  
E2

JR

Test Date	Formation	Oil BBL/Day	Oil-Gravity (API)	Gas MCF/Day	Gas-Oil Ratio Cu FT/BBL	Water BBL/Day	Pumpin or Flowing	Initial Shut-In Pressure	Choke Size	Flow Tubing Pressure
Aug 19, 2019	WOODFORD			2114		1454	FLOWING		FULL	760

**Completion and Test Data by Producing Formation**

Formation Name: WOODFORD

Code: 319WDFD

Class: GAS

**Spacing Orders**

Order No	Unit Size
671387	MULTIUNIT
626818	640 H
628077	640 H

**Perforated Intervals**

From	To
5561	12764

**Acid Volumes**

51,996 TOTAL GALS ACID

**Fracture Treatments**

10,740,786 TOTAL GALS SLICKWATER

7,867,637 TOTAL LBS SAND

Formation	Top
BOOCH COAL	2664
MIDDLE BOOCH	2817
LOWER BOOCH	2884
HARTSHORNE	3029
ATOKA	3100
GILCREASE SANSTONE	3714
SPIRO SANDSTONE	4112
WAPANUCKA LIMESTONE	4232
UNION VALLEY	4451
CROMWELL	4515
JEFFERSON	4696
FALSE CANEY	4892
CANEY	5081
MAYES	5346
WOODFORD	5346

Were open hole logs run? No

Date last log run:

Were unusual drilling circumstances encountered? No

Explanation:

**Other Remarks**

OCC – THIS DOCUMENT IS ACCEPTED BASED ON DATA SUBMITTED, THE FINAL LOCATION EXCEPTION FOR ORDER 671611 HAS NOT BEEN ISSUED.

OCC – THIS DOCUMENT IS ACCEPTED BASED ON DATA SUBMITTED, THE FINAL MULTIUNIT HORIZONTAL WELL FOR ORDER 671387 HAS NOT BEEN ISSUED.

**Lateral Holes**

Sec: 34 TWP: 7N RGE: 10E County: HUGHES

SW SW NE NW

1158 FNL 1497 FWL of 1/4 SEC

Depth of Deviation: 4946 Radius of Turn: 400 Direction: 358 Total Length: 7334

Measured Total Depth: 12909 True Vertical Depth: 5314 End Pt. Location From Release, Unit or Property Line: 1158

**FOR COMMISSION USE ONLY**

1144069

Status: Accepted

# BHL SUMMARY - LOCATION OF WELLBORE AND COMPLETION INTERVAL

TRINITY OPERATING (USG) LLC

Letty 4-3/34H  
3-6N-10E & 34-7N-10E  
Hughes Co.

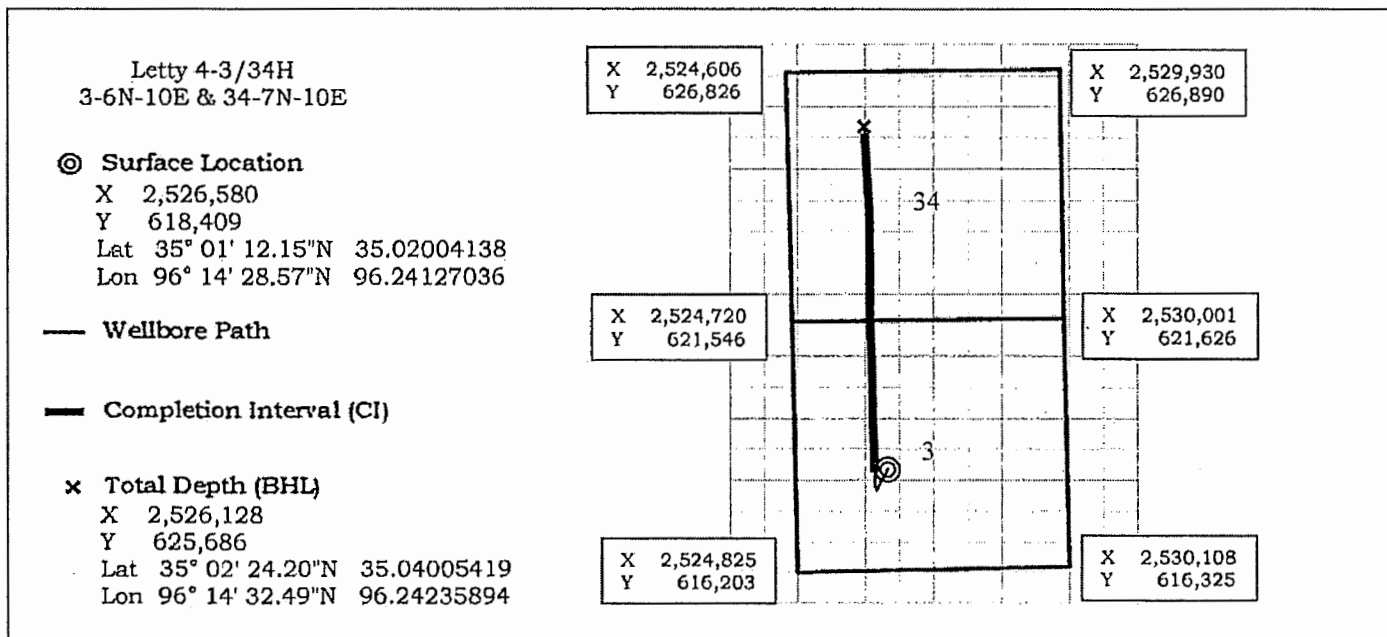
~~CD 2017-5979~~ (MUH) Interim Order 671387  
CD 2017-5980 (LE) Interim Order 671611  
NCT 165' FSL sec 3, NCT 165' FNL sec 34, NCT 1,400' FWL

	MD	TVD	Location	X	Y
Surface Location			2165' FSL & 1798' FWL of sec. 3-6N-10E	2,526,580	618,409
Woodford top	5,553'	5,350'	2106' FSL & 1548' FWL of sec. 3-6N-10E	2,526,331	618,345
Shallowest Perforation	5,561'	5,353'	2114' FSL & 1548' FWL of sec. 3-6N-10E	2,526,331	618,352
North line of sec. 34 / South line of sec. 3	8,788'	5,300'	0' FNL & 1525' FWL of sec. 3-6N-10E	2,526,245	621,570
Deepest Perforation	12,764'	5,316'	1303' FNL & 1507' FWL of sec. 34-7N-10E	2,526,141	625,542
Total Depth (BHL) in Woodford	12,909'	5,314'	1158' FNL & 1497' FWL of sec. 34-7N-10E	2,526,128	625,686

Perforations in sections 3 and 34 are in the Woodford only.

The completion interval (CI) is from shallowest perforation 5,561' to deepest perforation 12,764' MD.

Formation tops and completion interval (CI)	MD	Length of CI in each unit (% of total)
Shallowest Perforation	5,561	
North line of sec. 34 / South line of sec. 3	8,788	3,227' in section 3 (44.8008%)
Deepest Perforation	12,764	3,976' in section 34 (55.1992%)
Total Depth (BHL) in Woodford	12,909	7,203' total length of CI (100%)



10-K-49



MUHzW/LE

**Isopach: Woodford Shale**

 $Cl = 10^4$ 

Scale as indicated

### ATTRIBUTE MAP

- Calvin  
Senora  
Senora  
Stuart  
Thurman  
Redfork  
Booch  
Booch  
Hartshome  
Hartshome  
Hartshome  
Hartshome  
Gilcrease  
Union Valley  
Union Valley  
Cromwell  
Cromwell  
Jefferson  
Woodford  
Woodford

## WELL SYMBOLS

- Location Only  
 ● Oil Well  
 ☼ Gas Well  
 ⦿ Dry Hole  
 ⦿<sub>SWD</sub> Salt Water Disposal  
 ⊕ Unknown Status  
 ⊗ Well Type Not Listed

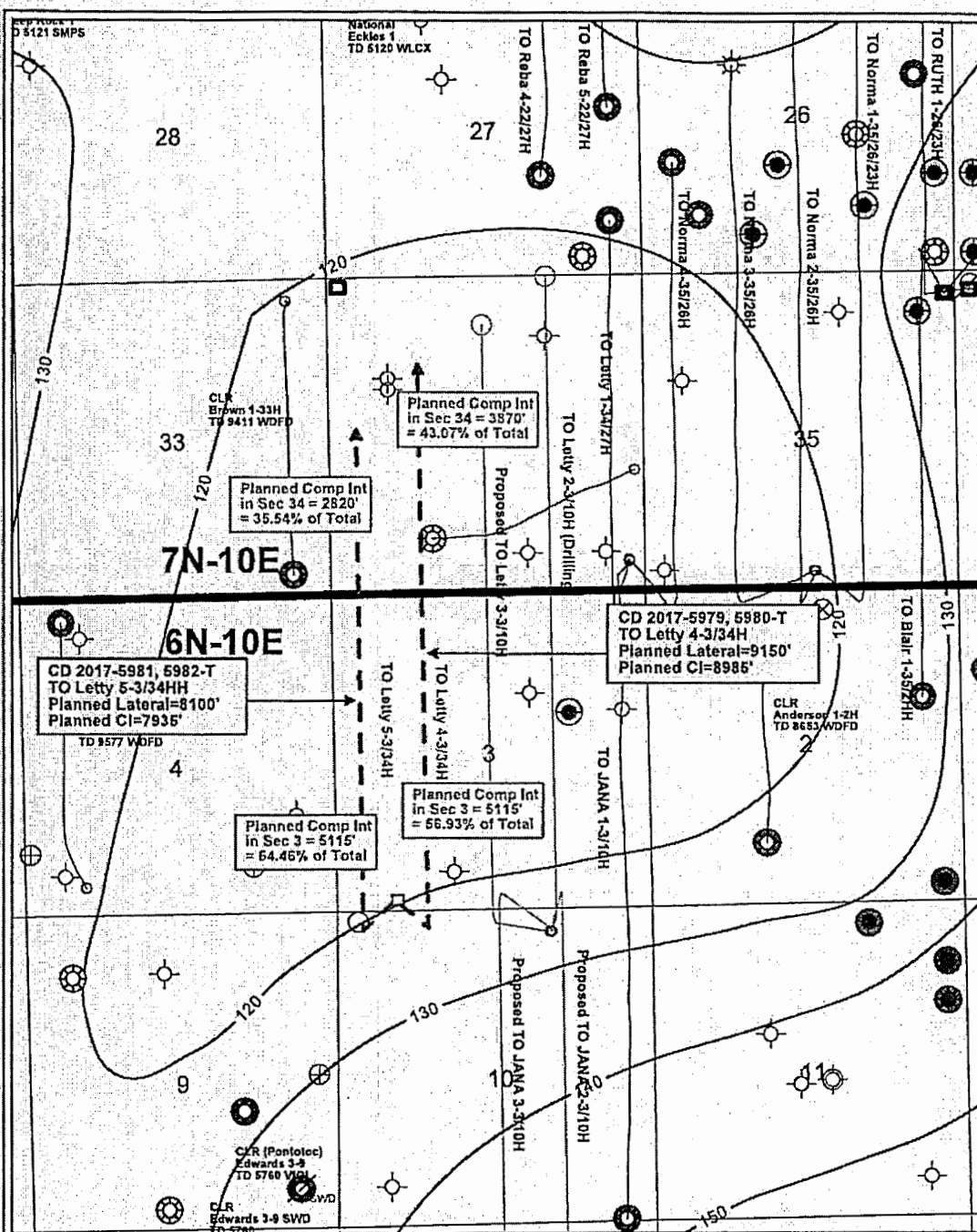
CD 2017-5979, 5980-7  
TO Letty 4-3/34H

CD 2017-5981, 5982-T  
TO Letty 5-3/34H

Only wells TD in Mississippian  
or deeper Labeled

Hughes Co., OK

By: AAH (26 September 2017)



PETRA 9/26/2017 1:00:14 PM

THIS DOCUMENT WAS RETRIEVED FROM PANOPTICON.COM. IT IS THE INTELLECTUAL PROPERTY OF PANOPTICA, LLC. POSSESSION OF THIS DOCUMENT BY ANYONE OTHER THAN A LICENSED PANOPTICON.COM SUBSCRIBER OR REMOVAL OF THIS DOCUMENT IS PROHIBITED.

ELISE CRUCHON  
EXHIBIT 2  
GSR  
REPORTER

10-2-17