

Oklahoma Corporation Commission
Oil & Gas Conservation Division
Post Office Box 52000
Oklahoma City, Oklahoma 73152-2000
Rule 165: 10-3-25

Form 1002A

API No.: 35019262570001

Completion Report

Spud Date: October 14, 2020

OTC Prod. Unit No.: 019-028650-0-0000

Drilling Finished Date: October 15, 2020

1st Prod Date: February 04, 2021

Completion Date: February 03, 2021

Drill Type: STRAIGHT HOLE

Well Name: OIL CITY UNIT 63

Purchaser/Measurer:

Location: CARTER 27 3S 2W
SW SE SE NW
165 FSL 2145 FWL of 1/4 SEC
Derrick Elevation: 1038 Ground Elevation: 1033

First Sales Date:

Operator: KODIAK OIL & GAS INC 23226

204 N WALNUT ST
MUENSTER, TX 76252-2766

Completion Type		Location Exception		Increased Density	
X	Single Zone	Order No		Order No	
	Multiple Zone	There are no Location Exception records to display.		There are no Increased Density records to display.	
	Commingled				

Casing and Cement							
Type	Size	Weight	Grade	Feet	PSI	SAX	Top of CMT
PRODUCTION	5 1/2	17	J	1173		180	SURFACE

Liner								
Type	Size	Weight	Grade	Length	PSI	SAX	Top Depth	Bottom Depth
There are no Liner records to display.								

Total Depth: 1200

Packer		Plug	
Depth	Brand & Type	Depth	Plug Type
There are no Packer records to display.		There are no Plug records to display.	

Initial Test Data										
Test Date	Formation	Oil BBL/Day	Oil-Gravity (API)	Gas MCF/Day	Gas-Oil Ratio Cu FT/BBL	Water BBL/Day	Pumpin or Flowing	Initial Shut-In Pressure	Choke Size	Flow Tubing Pressure
Feb 06, 2021	PONTOTOC	4	21			34	PUMPING	40	0	

Completion and Test Data by Producing Formation										
---	--	--	--	--	--	--	--	--	--	--

Formation Name: PONTOTOC		Code: 419PNTC	Class: OIL
Spacing Orders		Perforated Intervals	
Order No	Unit Size	From	To
47075	UNIT	948	952
67235	UNIT	966	1020
Acid Volumes		Fracture Treatments	
There are no Acid Volume records to display.		There are no Fracture Treatments records to display.	

Formation	Top
PONTOTOC	850

Were open hole logs run? Yes
Date last log run: October 16, 2020

Were unusual drilling circumstances encountered? No
Explanation:

Other Remarks
There are no Other Remarks.

FOR COMMISSION USE ONLY	
Status: Accepted	1146134

API NO. 35-019-26257
OTC PROD. UNIT NO. 019-028650

Oil and Gas Conservation Division
P.O. Box 52000
Oklahoma City, OK 73152-2000
405-522-0577
OCCentralProcessing@OCC.OK.GOV



OKLAHOMA
Corporation
Commission

Received
2-10-21
DKD

Form 1002A
Rev. 2020

ORIGINAL
AMENDED (Reason)

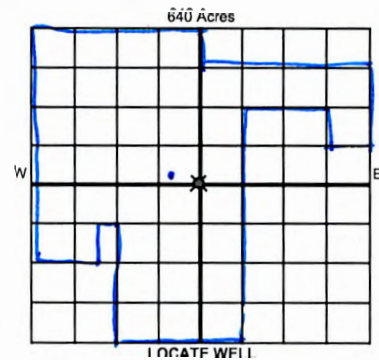
Rule 165:10-3-25

COMPLETION REPORT

TYPE OF DRILLING OPERATION
☒ STRAIGHT HOLE ☐ DIRECTIONAL HOLE ☐ HORIZONTAL HOLE
☐ SERVICE WELL
If directional or horizontal, see reverse for bottom hole location.

SPUD DATE 10-14-2020
DRLG FINISHED DATE 10-15-2020
DATE OF WELL COMPLETION 02/03/2021
1st PROD DATE 02/04/2021

COUNTY CARTER SEC 27 TWP 3S RGE 2W
LEASE NAME OIL CITY UNIT WELL NO. 63
SW 1/4 SE 1/4 SE 1/4 NW 1/4 FSL 165 FWL 2145
ELEVATION Derrick FL 1038 Ground 1033 Latitude Longitude
OPERATOR NAME KODIAK OIL & GAS, INC OTC / OCC OPERATOR NO. 23226
ADDRESS 204 N WALNUT ST
CITY MUENSTER STATE TX ZIP 76252



COMPLETION TYPE

☒ SINGLE ZONE
☐ MULTIPLE ZONE
Application Date
☐ COMMINGLED
Application Date
LOCATION EXCEPTION ORDER NO.
MULTIUNIT ORDER NO.
INCREASED DENSITY ORDER NO.

CASING & CEMENT (Attach Form 1002C)

TYPE	SIZE	WEIGHT	GRADE	FEET	PSI	SAX	TOP OF CMT
CONDUCTOR							
SURFACE							
INTERMEDIATE							
PRODUCTION	5 1/2	17#	J	1173		180	SURFACE
LINER							

PACKER @ BRAND & TYPE PLUG @ TYPE PLUG @ TYPE PLUG @ TYPE
PACKER @ BRAND & TYPE PLUG @ TYPE PLUG @ TYPE
TOTAL DEPTH 1200

COMPLETION & TEST DATA BY PRODUCING FORMATION

FORMATION	PONTOTOC						No Frac
SPACING & SPACING ORDER NUMBER (unit)	47075 & 67235 (unit)						
CLASS: Oil, Gas, Dry, Inj, Disp, Comm Disp, Svc	Oil						
PERFORATED INTERVALS	948'-952'						
	966-1020						
ACID/VOLUME	none						
FRACTURE TREATMENT (Fluids/Prop Amounts)	none						

Min Gas Allowable (165:10-17-7)

OR

Oil Allowable (165:10-13-3)

Purchaser/Measurer

First Sales Date

INITIAL TEST DATA

INITIAL TEST DATE	2/6/2021					
OIL-BBL/DAY	4					
OIL-GRAVITY (API)	21					
GAS-MCF/DAY	0					
GAS-OIL RATIO CU FT/BBL	0					
WATER-BBL/DAY	34					
PUMPING OR FLOWING	PUMPING					
INITIAL SHUT-IN PRESSURE	40					
CHOKE SIZE	0					
FLOW TUBING PRESSURE	0					

A record of the formations drilled through and pertinent remarks are presented on the reverse. I declare that I have knowledge of the contents of this report and am authorized by my organization to make this report, which was prepared by me or under my supervision and direction, with the data and facts stated herein to be true, correct, and complete to the best of my knowledge and belief.

SIGNATURE MEL WALTERSCHEID
204 N WALNUT ST MUENSTER TX 76252
ADDRESS CITY STATE ZIP
DATE 2/8/2021 PHONE NUMBER 940-759-4001
EMAIL ADDRESS WFW@NTIN.NET

Give formation names and tops, if available, or descriptions and thickness of formations drilled through. Show intervals cored or drillstem tested.

Give formation names and tops, if available, or descriptions and thickness of formations drilled through. Show intervals cored or drillstem tested.

LEASE NAME	OIL CITY UNIT	WELL NO.	63
------------	---------------	----------	----

UNITED THROUGH: SHOW INTERVALS CORDED OR UNIFORM TESTED.	
NAMES OF FORMATIONS	TOP
PONTOTOC	850

FOR COMMISSION USE ONLY	
ITD on file	<input type="checkbox"/> YES <input type="checkbox"/> NO
APPROVED	DISAPPROVED
2) Reject Codes	

Were open hole logs run? ☒ yes ☐ no

Date Last log was run 10/16/2020

Was CO₂ encountered? ☐ yes ☒ no at what depths? _____

Was H₂S encountered? ☐ yes ☒ no at what depths? _____

Were unusual drilling circumstances encountered? ☐ yes ☒ no

If yes, briefly explain below _____

Other remarks:

If more than three drainholes are proposed, attach a separate sheet indicating the necessary information.

Direction must be stated in degrees azimuth.
Please note, the horizontal drainhole and its end
point must be located within the boundaries of the
lease or spacing unit.

Directional surveys are required for all drainholes and directional wells.

640 Acres

BOTTOM HOLE LOCATION FOR DIRECTIONAL HOLE

SEC	TWP	RGE	COUNTY
1/4	1/4	1/4	1/4
Measured Total Depth	True Vertical Depth	Feet From 1/4 Sec Lines	
		BHL From Lease, Unit, or Property Line:	

BOTTOM HOLE LOCATION FOR HORIZONTAL HOLE: (LATERALS)

LATERAL #1

EXTERNAL #1							
SEC	TWP	RGE	COUNTY				
1/4		1/4		1/4		1/4	
Feet From 1/4 Sec Lines							
Depth of Deviation		Radius of Turn		Direction		Total Length	
Measured Total Depth		True Vertical Depth		BHL From Lease, Unit, or Property Line:			

LATERAL #2

SEC	TWP	RGE	COUNTY			
1/4		1/4		1/4		1/4
Feet From 1/4 Sec Lines						
Depth of Deviation		Radius of Turn		Direction		Total Length
Measured Total Depth		True Vertical Depth		BHL From Lease, Unit, or Property Line:		

LATERAL #3

CATALOG #3									
SEC	TWP	RGE	COUNTY						
1/4		1/4	1/4		1/4		Feet From 1/4 Sec Lines		
Depth of Deviation		Radius of Turn		Direction			Total Length		
Measured Total Depth		True Vertical Depth		BHL From Lease, Unit, or Property Line:					