

Oklahoma Corporation Commission  
Oil & Gas Conservation Division  
Post Office Box 52000  
Oklahoma City, Oklahoma 73152-2000  
Rule 165: 10-3-25

Form 1002A

API No.: 35087221520001

**Completion Report**

Spud Date: August 25, 2018

OTC Prod. Unit No.: 087-224499

Drilling Finished Date: September 10, 2018

1st Prod Date: November 02, 2018

Completion Date: November 02, 2018

**Drill Type:** HORIZONTAL HOLE

Min Gas Allowable: Yes

Well Name: MCMAHAN 0112 1H

Purchaser/Measurer: ENABLE GATHERING & PROCESSING

Location: MCCLAIN 36 9N 4W  
NE SW SW SW  
525 FSL 388 FWL of 1/4 SEC  
Derrick Elevation: 0 Ground Elevation: 1254

First Sales Date: 11/02/2018

Operator: EOG RESOURCES INC 16231

3817 NW EXPRESSWAY STE 500  
OKLAHOMA CITY, OK 73112-1483

Completion Type		Location Exception		Increased Density	
X	Single Zone	Order No		Order No	
	Multiple Zone	689170		N/A	
	Commingled				

Casing and Cement							
Type	Size	Weight	Grade	Feet	PSI	SAX	Top of CMT
SURFACE	9 5/8	36	J-55	1006		400	SURFACE
PRODUCTION	5 1/2 X 7	29 / 32	P-110	16997		1965	8711

Liner								
Type	Size	Weight	Grade	Length	PSI	SAX	Top Depth	Bottom Depth
There are no Liner records to display.								

**Total Depth: 17004**

Packer		Plug	
Depth	Brand & Type	Depth	Plug Type
There are no Packer records to display.		There are no Plug records to display.	

Initial Test Data										
Test Date	Formation	Oil BBL/Day	Oil-Gravity (API)	Gas MCF/Day	Gas-Oil Ratio Cu FT/BBL	Water BBL/Day	Pumpin or Flowing	Initial Shut-In Pressure	Choke Size	Flow Tubing Pressure
Nov 09, 2018	WOODFORD	403	38	193	479	2563	FLOWING	500	128	1610

**Completion and Test Data by Producing Formation**

Formation Name: WOODFORD

Code: 319WDFD

Class: OIL

**Spacing Orders**

Order No	Unit Size
684683	640
687006	640
689169	MULTIUNIT

**Perforated Intervals**

From	To
9794	16869

**Acid Volumes**

2,516 GALLONS 7.5% HCL TOTAL ACID
-----------------------------------

**Fracture Treatments**

10,236,972 GALLONS TOTAL FLUID, 13,279,800 POUNDS TOTAL PROPPANT
--

Formation	Top
WOODFORD	9143

Were open hole logs run? Yes

Date last log run:

Were unusual drilling circumstances encountered? No

Explanation:

**Other Remarks**

WELL NAME CHANGED FROM THAT ON APPROVED PERMIT TO DRILL TO INCLUDE "0112" IN LEASE NAME RATHER THAN WELL NUMBER. 8-3/4" PILOT HOLE DRILLED TO 9,512', PLUGGED BACK WITH 2 CEMENT PLUGS. PLUG 1 FROM 8,812' - 9,512', CEMENTED WITH 300 SACKS. PLUG 2 FROM 8,312' - 8,812', CEMENTED WITH 270 SACKS. SIDETRACK 8-3/4" PILOT HOLE @ 8,520' MD AND DRILLED SIDETRACK 1 TO 17,004' MD. 7" X 5-1/2" PRODUCTION CASING SET AT 16,997' AND CEMENTED WITH 1,965 SACKS. OCC - THIS DOCUMENT IS ACCEPTED BASED ON THE DATA SUBMITTED NEITHER THE FINAL LOCATION EXCEPTION NOR THE FINAL MULTIUNIT ORDERS HAVE BEEN SUBMITTED.

**Lateral Holes**

Sec: 36 TWP: 9N RGE: 4W County: MCCLAIN

SE NW SW SW

669 FSL 476 FWL of 1/4 SEC

Depth of Deviation: 8665 Radius of Turn: 398 Direction: 34 Total Length: 393

Measured Total Depth: 9456 True Vertical Depth: 9454 End Pt. Location From Release, Unit or Property Line: 476

Sec: 12 TWP: 8N RGE: 4W County: MCCLAIN

NE SW SW NW

2169 FNL 386 FWL of 1/4 SEC

Depth of Deviation: 8520 Radius of Turn: 2198 Direction: 179 Total Length: 6286

Measured Total Depth: 17004 True Vertical Depth: 9387 End Pt. Location From Release, Unit or Property Line: 386

**FOR COMMISSION USE ONLY**

1141750



PLEASE TYPE OR USE BLACK INK ONLY  
NOTE:

Attach copy of original 1002A  
if recompletion or reentry.

**OKLAHOMA CORPORATION COMMISSION**  
Oil & Gas Conservation Division  
Post Office Box 52000  
Oklahoma City, Oklahoma 73152-2000  
Rule 165-10-3-25

RECEIVED

Form 1002A  
Rev. 2009

DEC 27 2018

OKLAHOMA CORPORATION  
COMMISSION

X	ORIGINAL
	AMENDED (Reason)

## COMPLETION REPORT

## TYPE OF DRILLING OPERATION

☐ STRAIGHT HOLE ☐ DIRECTIONAL HOLE ☒ HORIZONTAL HOLE  
☐ SERVICE WELL

If directional or horizontal, see reverse for bottom hole location.

COUNTY	MCCLAIN	SEC	36	TWP	9N	RGE	4W	DATE OF WELL COMPLETION	11/2/2018
LEASE NAME	MCMAHAN 0112					WELL NO.	1H	1st PROD DATE	11/2/2018
NE 1/4 SW 1/4 SW 1/4 SW 1/4	FSL 1/4 SEC	525	FWL 1/4 SEC	388	RECOMP DATE				
ELEVATION N Derrick FL	Ground	1254	Latitude (if known)			Longitude (if known)			
OPERATOR NAME	EOG Resources, Inc.					OTC/OCC OPERATOR NO.		16231	
ADDRESS					3817 NW Expressway, Suite 500				
CITY	Oklahoma City				STATE	OK	ZIP	73112	

A 10x10 grid with a bold cross dividing it into four 5x5 quadrants. The top-left quadrant is labeled 'W' and the bottom-left quadrant is labeled 'X'.

**COMPLETION TYPE**

X	SINGLE ZONE
	MULTIPLE ZONE
	Application Date
	COMMINGLED
	Application Date
LOCATION	
EXCEPTION ORDER	201804292, 201804293
INCREASED DENSITY	
ORDER NO.	N/A

**CASING & CEMENT (Form 1002C must be attached)**

STRENGTH & CEMENT (Form 1002B must be attached)							
TYPE	SIZE	WEIGHT	GRADE	FEET	PSI	SAX	TOP OF CMT
CONDUCTOR							
SURFACE	9 5/8	36	J-55	1,006		400	SURFACE
INTERMEDIATE							
PRODUCTION TAPERED STRING	5 1/2 X 7	29/32	P-110	16,997		1,965	8,711
LINER							
PLUG @	TYPE	PLUG @	TYPE	TOTAL DEPTH		17,004	

PACKER @	BRAND & TYPE	PLUG @	TYPE	PLUG @	TYPE
PACKER @	BRAND & TYPE	PLUG @	TYPE	PLUG @	TYPE

**COMPLETION & TEST DATA BY PRODUCING FORMATION**

FORMATION	WOODFORD				
SPACING & SPACING ORDER NUMBER	640/684683, 687006	689169ED 201804292 MU			Reported to Phase Focus
CLASS: Oil, Gas, Dry, Inj. Disp, Comm Disp, Svc	OIL				
PERFORATED INTERVALS					
	9,794 - 16,869				
ACID/VOLUME	Total Acid - 2,516 GALS 7.5% HCL				
FRACTURE TREATMENT (Fluids/Prop Amounts)					
	Total Fluid - 10,236,972 GALS				
	Total Prop - 13,279,800 LBS				

Min Gas Allowable (165:10-17-7)

Gas Purchaser/Measurer

### Enable Gathering & Processing

☒

OR

First Sales Date

11/2/2018

### INITIAL TEST DATA

INITIAL TEST DATE	11/9/2018					
OIL-BBL/DAY	403					
OIL-GRAVITY ( API)	38					
GAS-MCF/DAY	193					
GAS-OIL RATIO CU FT/BBL	479					
WATER-BBL/DAY	2563					
PUMPING OR FLOWING	FLOWING					
INITIAL SHUT-IN PRESSURE	500					
CHOKE SIZE	128					
FLOW TUBING PRESSURE	1610					

# AS SUBMITTED

A record of the formations drilled through, and pertinent remarks are presented on the reverse. I declare that I have knowledge of the contents of this report and am authorized by my organization to make this report, which was prepared by me or under my supervision and direction, with the data and facts stated herein to be true, correct, and complete to the best of my knowledge and belief.

SIGNATURE

Joni Reeder

12/27/2018

PHONE NUMBER \_\_\_\_\_

3817 NW Expressway, Suite 500

Oklahoma City

NAME (PRINT OR TYPE)

OK 73112

toni\_reeder@eogresources.com

ADDRESS

CITY

STATE

ZIP

EMAIL ADDRESS \_\_\_\_\_

## PLEASE TYPE OR USE BLACK INK ONLY

## FORMATION RECORD

Give formation names and tops, if available, or descriptions and thickness of formations drilled through. Show intervals cored or drillstem tested.

NAMES OF FORMATIONS	TOP
WOODFORD	9,143

LEASE NAME \_\_\_\_\_

WELL NO. \_\_\_\_\_

## FOR COMMISSION USE ONLY

ITD on file ☐ YES ☐ NO

APPROVED \_\_\_\_\_ DISAPPROVED \_\_\_\_\_

2) Reject Codes

Were open hole logs run?

☒ yes ☐ no

Date Last log was run

N/A

Was CO<sub>2</sub> encountered?☐ yes ☒ no at what depths? \_\_\_\_\_Was H<sub>2</sub>S encountered?☐ yes ☒ no at what depths? \_\_\_\_\_

Were unusual drilling circumstances encountered?

☐ yes ☒ no

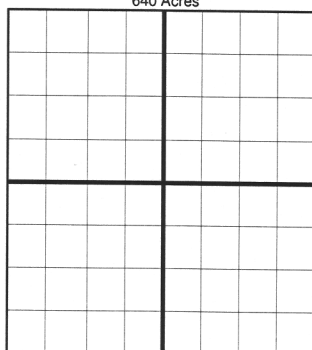
If yes, briefly explain below:

Other remarks:

NAME CHANGED FROM THAT ON APPROVED PERMIT TO DRILL TO INCLUDE "0112" IN LEASE NAME RATHER THAN WELL NO.

8-3/4" Pilot hole drilled to 9,512', plugged back with 2 cement plugs. Plug 1 from 8,812' - 9,512', cemented w/300 sacks. Plug 2 from 8,312' - 8,812' cemented w/270 sacks. Sidetrack 8-3/4" pilot hole @8,520' MD and drilled sidetrack 1 to 17,004' MD. 7" x 5-1/2" production casing set at 16,997' and cemented w/1965 sacks.

640 Acres

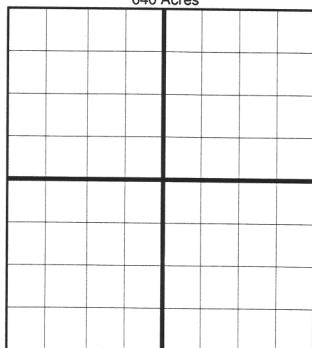


If more than three drainholes are proposed, attach a separate sheet indicating the necessary information.

Direction must be stated in degrees azimuth.  
Please note, the horizontal drainhole and its end point must be located within the boundaries of the lease or spacing unit.

Directional surveys are required for all drainholes and directional wells.

640 Acres



## BOTTOM HOLE LOCATION FOR DIRECTIONAL HOLE

SEC	TWP	RGE	COUNTY
Spot Location	1/4	1/4	1/4
Measured Total Depth	True Vertical Depth	Feet From 1/4 Sec Lines	FSL
		BHL From Lease, Unit, or Property Line:	FWL

## BOTTOM HOLE LOCATION FOR HORIZONTAL HOLE: (LATERALS)

## OPEN HOLE LATERAL

SEC	TWP	RGE	COUNTY
36	9N	4W	MCCLAIN
Spot Location	SE 1/4	NW 1/4	SW 1/4
Depth of Deviation	8,665	Radius of Turn	398
Measured Total Depth	9,456	True Vertical Depth	9,454
		Feet From 1/4 Sec Lines	FSL 669
		Direction	34
		Total Length	393
		BHL From Lease, Unit, or Property Line:	476

## LATERAL ST1

SEC	TWP	RGE	COUNTY
12	8N	4W	
Spot Location	NE 1/4	SW 1/4	NW 1/4
Depth of Deviation	8,520	Radius of Turn	2198
Measured Total Depth	17,004	True Vertical Depth	9,387
		Feet From 1/4 Sec Lines	FNL 2,169
		Direction	179
		Total Length	6,286
		BHL From Lease, Unit, or Property Line:	386

## LAYTERAL 2

SEC	TWP	RGE	COUNTY
Spot Location	1/4	1/4	1/4
Depth of Deviation	Radius of Turn	Direction	Total Length
Measured Total Depth	True Vertical Depth	BHL From Lease, Unit, or Property Line:	

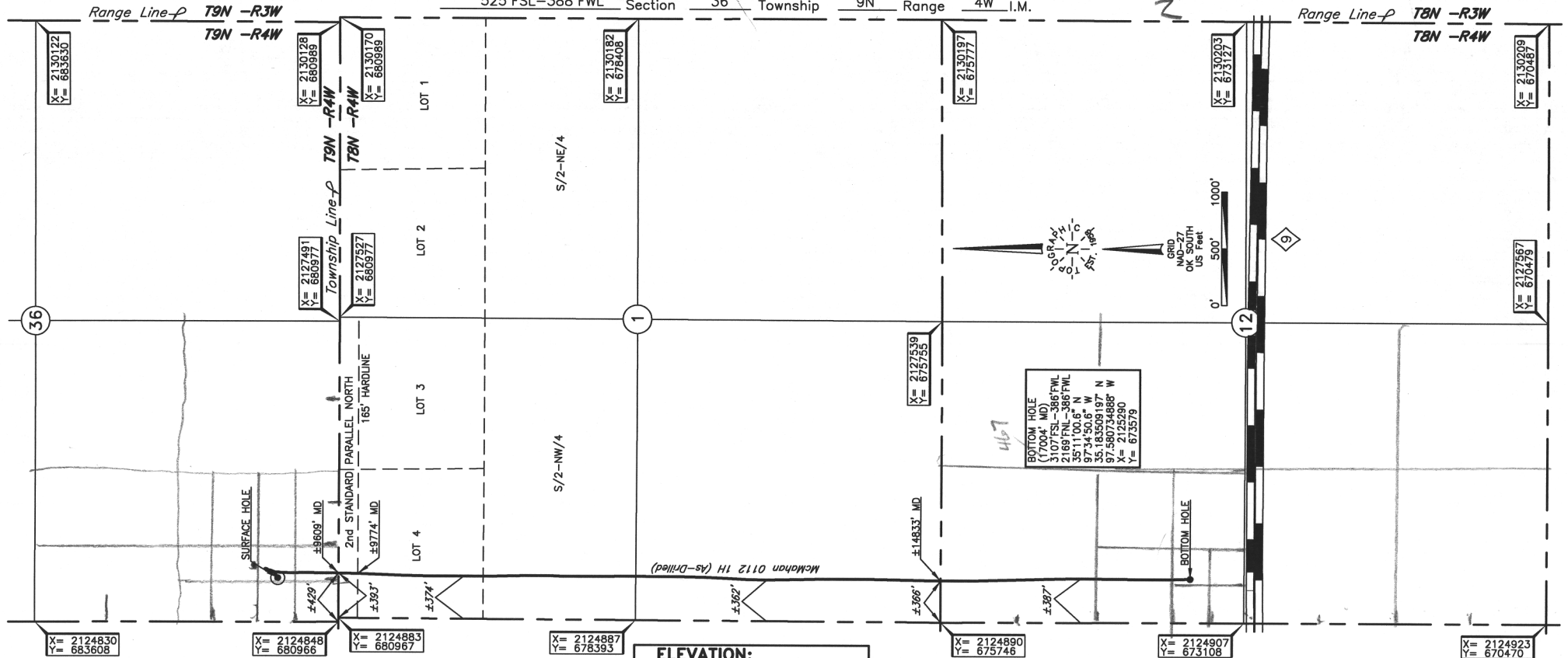
# TOPOGRAPHIC LAND SURVEYORS OF OKLAHOMA

13800 WIRELESS WAY, OKLA. CITY, OKLA. 73134 • LOCAL (405) 843-4847 • OUT OF STATE (800) 654-3219

MCCLAIN Certificate of Authorization No. 1293 LS

County, Oklahoma

525' FSL-388' FWL Section 36 Township 9N Range 4W I.M.



Operator: EOG RESOURCES, INC.

Lease Name: MCMAHAN 0112

Well No.: 1H

Topography & Vegetation Loc. fell on level pad.

Good Drill Site? ☐ Yes ☐ No Reference Stakes or Alternate Location Stakes Set ☐ None ☐ Yes

Best Accessibility to Location From West off county road

Distance & Direction

from Hwy Jct or Town From the junction of St Hwy. 9 and US Hwy. 62 South of Newcastle, OK, go ±1.5 miles North on US Hwy. 62, then go ±1 mile East to the SW Cor. of Sec. 36-9N-4W.

303101 Date of Drawing: Sep. 17, 2018  
 Invoice # 300959 Date Staked: May 15, 2018 JP

## FINAL AS-DRILLED PLAT

AS-DRILLED INFORMATION  
 FURNISHED BY EOG RESOURCES, INC.

This information was gathered with a GPS receiver with ±1 foot Horiz./Vert. accuracy.