

Oklahoma Corporation Commission
Oil & Gas Conservation Division
Post Office Box 52000
Oklahoma City, Oklahoma 73152-2000
Rule 165: 10-3-25

Form 1002A

API No.: 35031017130001

Completion Report

Spud Date: March 07, 1943

OTC Prod. Unit No.: 10917

Drilling Finished Date: March 28, 1943

Amended

1st Prod Date: April 06, 1943

Amend Reason: TEMPORARY EXEMPTION FROM PLUGGING

Completion Date: April 06, 1943

Recomplete Date: December 28, 2018

Drill Type: STRAIGHT HOLE

Well Name: SPENCER RESERVATION UNIT (MAY E SPENCER 1) 2-1

Purchaser/Measurer:

Location: COMANCHE 8 3N 10W
C NW NW
1980 FSL 1980 FWL of 1/4 SEC
Derrick Elevation: 0 Ground Elevation: 1239

First Sales Date:

Operator: BOSTEX OPERATING COMPANY 4432
PO BOX 7
511 CLAY ST
NOCONA, TX 76255-0007

Completion Type		Location Exception		Increased Density	
X	Single Zone	Order No		Order No	
	Multiple Zone	There are no Location Exception records to display.		There are no Increased Density records to display.	
	Commingled				

Casing and Cement							
Type	Size	Weight	Grade	Feet	PSI	SAX	Top of CMT
SURFACE	8 5/8	32		151		75	SURFACE
PRODUCTION	5 1/2	17		1043		150	SURFACE

Liner								
Type	Size	Weight	Grade	Length	PSI	SAX	Top Depth	Bottom Depth
There are no Liner records to display.								

Total Depth: 1122

Packer		Plug	
Depth	Brand & Type	Depth	Plug Type
There are no Packer records to display.		There are no Plug records to display.	

Initial Test Data										
Test Date	Formation	Oil BBL/Day	Oil-Gravity (API)	Gas MCF/Day	Gas-Oil Ratio Cu FT/BBL	Water BBL/Day	Pumpin or Flowing	Initial Shut-In Pressure	Choke Size	Flow Tubing Pressure
There are no Initial Data records to display.										

Completion and Test Data by Producing Formation

Formation Name: PERMIAN

Code: 459PRMN

Class: TA

Spacing Orders**Order No****Unit Size**

There are no Spacing Order records to display.

Perforated Intervals**From****To**

790

812

Acid Volumes

There are no Acid Volume records to display.

Fracture Treatments

There are no Fracture Treatments records to display.

Formation**Top**

Were open hole logs run? No

Date last log run:

Were unusual drilling circumstances encountered? No

Explanation:

Other Remarks

FORM FILED IN SUPPORT OF FORM 1003A TEMPORARY EXEMPTION FROM PLUGGING. WELL CURRENTLY SHUT IN. WELL TO BE REWORKED AND RETURNED TO PRODUCTION.

FOR COMMISSION USE ONLY

1141738

Status: Accepted

API NO. 3503101713
OTC PROD. UNIT NO. 10917

PLEASE TYPE OR USE BLACK INK ONLY

NOTE:

Attach copy of original 1002A
if recompletion or reentry.

OKLAHOMA CORPORATION COMMISSION
Oil & Gas Conservation Division
Post Office Box 52000
Oklahoma City, Oklahoma 73152-2000
Rule 165:10-3-25

RECEIVED

DEC 21 2018

Oklahoma Corporation
Commission

Form 1002A
Rev. 2009

☐ ORIGINAL
☒ AMENDED (Reason)

Temp Exemption from Plugging

COMPLETION REPORT

TYPE OF DRILLING OPERATION

☒ STRAIGHT HOLE ☐ DIRECTIONAL HOLE ☐ HORIZONTAL HOLE
☐ SERVICE WELL

If directional or horizontal, see reverse for bottom hole location.

COUNTY Comanche SEC 8 TWP 3N RGE 10W

LEASE NAME Spencer Reservation Unit WELL NO. 2-1

C 1/4 NW 1/4 NW 1/4 1/4 FSL OF 1980 FWL OF 1980

ELEVATION Derrick FL Ground 1239 Latitude (if known) Longitude (if known)

OPERATOR NAME Bostex Operating Company OTC/OCC OPERATOR NO. 4432

ADDRESS PO Box 7

CITY Nocona STATE TX ZIP 76255

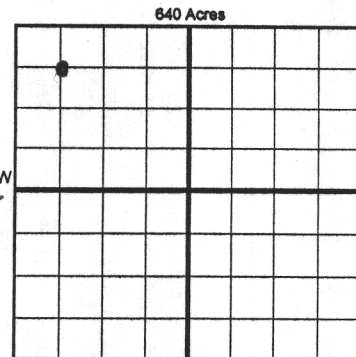
SPUD DATE 03/07/43

DRLG FINISHED DATE 03/28/43

DATE OF WELL COMPLETION 4-6-43

1st PROD DATE 4-6-43

RECOMP DATE 12-28-18



COMPLETION TYPE

☒ SINGLE ZONE
☐ MULTIPLE ZONE
Application Date
☐ COMINGLED
Application Date
LOCATION
EXCEPTION ORDER
INCREASED DENSITY
ORDER NO.

CASING & CEMENT (Form 1002C must be attached)

TYPE	SIZE	WEIGHT	GRADE	FEET	PSI	SAX	TOP OF CMT
CONDUCTOR							
SURFACE	8 5/8"	32#		151		75	Surface
INTERMEDIATE							
PRODUCTION	5 1/2"	17#		1043		150	Surface
LINER							

PACKER ② BRAND & TYPE PLUG ② 822 TYPE PBTD PLUG ② TYPE
PACKER ② BRAND & TYPE PLUG ② TYPE PLUG ② TYPE

TOTAL DEPTH 1122

COMPLETION & TEST DATA BY PRODUCING FORMATION

459 PERMIN

original 1002A

FORMATION	(Spencer "G") Permian						
SPACING & SPACING ORDER NUMBER							
CLASS: Oil, Gas, Dry, Inj, Disp, Comm Disp, Svc	Oil TA						
	790-812						
PERFORATED INTERVALS							
ACID/VOLUME							
FRACTURE TREATMENT (Fluids/Prop Amounts)							

Min Gas Allowable (165:10-17-7)

Gas Purchaser/Measurer

☐ OR

First Sales Date

INITIAL TEST DATA

Oil Allowable (165:10-13-3)

INITIAL TEST DATE							
OIL-BBL/DAY							
OIL-GRAVITY (API)							
GAS-MCF/DAY							
GAS-OIL RATIO CU FT/BBL							
WATER-BBL/DAY							
PUMPING OR FLOWING							
INITIAL SHUT-IN PRESSURE							
CHOKE SIZE							
FLOW TUBING PRESSURE							

AS SUBMITTED

A record of the formations drilled through, and pertinent remarks are presented on the reverse. I declare that I have knowledge of the contents of this report and am authorized by my organization to make this report, which was prepared by me or under my supervision and direction, with the data and facts stated herein to be true, correct, and complete to the best of my knowledge and belief.

Kelly Davis
SIGNATURE NAME (PRINT OR TYPE) 12-11-2018 940-759-2053
PO Box 7 Nocona TX 76255
ADDRESS CITY STATE ZIP kdavis@ntin.net
EMAIL ADDRESS

FORMATION RECORD

LEASE NAME **Spencer Reservation Unit** WELL NO. **2-1**

NAMES OF FORMATIONS	TOP

FOR COMMISSION USE ONLY	
ITD on file	<input type="checkbox"/> YES <input type="checkbox"/> NO
APPROVED	DISAPPROVED
2) Reject Codes _____ _____ _____ _____ _____	

Were open hole logs run? ☐ yes ☐ no

Date Last log was run _____

Was CO₂ encountered? ☐ yes ☐ no at what depths? _____

Was H₂S encountered? ☐ yes ☐ no at what depths? _____

Were unusual drilling circumstances encountered? ☐ yes ☐ no

If yes, briefly explain below

Other remarks: Form filed in support of Form 1003A Temporary Exemption from Plugging.

Well currently shut in. Well to be reworked and returned to production.

640 Acres

A 10x10 grid representing 640 acres. The grid is divided into four 5x5 quadrants by a thick horizontal line and a thick vertical line intersecting at the center. The text '640 Acres' is written at the top center of the grid.

Direction must be stated in degrees azimuth.
Please note, the horizontal drainhole and its end
point must be located within the boundaries of the
lease or spacing unit.

640 Acres

A 10x10 grid representing 640 acres. The grid is divided into four equal quadrants by a thick vertical line and a thick horizontal line. The top-left quadrant is labeled '640 Acres'.

BOTTOM HOLE LOCATION FOR DIRECTIONAL HOLE

SEC	TWP	RGE	COUNTY
Spot Location			
1/4	1/4	1/4	1/4
Measured Total Depth		True Vertical Depth	Feet From 1/4 Sec Lines FSL FWL
			BHL From Lease, Unit, or Property Line:

BOTTOM HOLE LOCATION FOR HORIZONTAL HOLE: (LATERALS)

LATERAL #1						
SEC	TWP	RGE	COUNTY			
Spot Location			Feet From 1/4 Sec Lines		FSL	FWL
1/4		1/4	1/4			
Depth of Deviation		Radius of Turn	Direction		Total Length	
Measured Total Depth		True Vertical Depth	BHL From Lease, Unit, or Property Line:			

LATERAL #2							
SEC	TWP	RGE	COUNTY				
Spot Location				Feet From 1/4 Sec Lines	FSL	FWL	
1/4	1/4	1/4	1/4				
Depth of Deviation		Radius of Turn		Direction		Total Length	
Measured Total Depth		True Vertical Depth		BHL From Lease, Unit, or Property Line:			

LATERAL #3							
SEC	TWP	RGE	COUNTY				
Spot Location				Feet From 1/4 Sec Lines	FSL	FWL	
1/4	1/4	1/4	1/4				
Depth of Deviation		Radius of Turn		Direction		Total Length	
Measured Total Depth		True Vertical Depth		BHL From Lease, Unit, or Property Line:			