

Oklahoma Corporation Commission
Oil & Gas Conservation Division
Post Office Box 52000
Oklahoma City, Oklahoma 73152-2000
Rule 165: 10-3-25

Form 1002A

API No.: 35019262920000

Completion Report

Spud Date: April 30, 2018

OTC Prod. Unit No.:

Drilling Finished Date: May 04, 2018

1st Prod Date: December 04, 2018

Completion Date: November 26, 2018

Drill Type: STRAIGHT HOLE

Well Name: W B JOHNSON 5

Purchaser/Measurer:

Location: CARTER 26 2S 2W
NW NE NE SW
2350 FSL 2219 FWL of 1/4 SEC
Derrick Elevation: 0 Ground Elevation: 941

First Sales Date:

Operator: BURTON PAUL LLC 11307

2435 DEESE RD
ARDMORE, OK 73401-5569

Completion Type		Location Exception		Increased Density	
X	Single Zone	Order No		Order No	
	Multiple Zone	There are no Location Exception records to display.		There are no Increased Density records to display.	
	Commingled				

Casing and Cement							
Type	Size	Weight	Grade	Feet	PSI	SAX	Top of CMT
PRODUCTION	5 1/2	15.5		1197		185	SURFACE

Liner								
Type	Size	Weight	Grade	Length	PSI	SAX	Top Depth	Bottom Depth
There are no Liner records to display.								

Total Depth: 1198

Packer		Plug	
Depth	Brand & Type	Depth	Plug Type
There are no Packer records to display.		There are no Plug records to display.	

Initial Test Data										
Test Date	Formation	Oil BBL/Day	Oil-Gravity (API)	Gas MCF/Day	Gas-Oil Ratio Cu FT/BBL	Water BBL/Day	Pumpin or Flowing	Initial Shut-In Pressure	Choke Size	Flow Tubing Pressure
Dec 04, 2018	DEESE	3	24				PUMPING			

Completion and Test Data by Producing Formation										
---	--	--	--	--	--	--	--	--	--	--

Formation Name: DEESE		Code: 404DEESS	Class: OIL
Spacing Orders		Perforated Intervals	
Order No	Unit Size	From	To
NONE		1075	1100
Acid Volumes		Fracture Treatments	
2,500 GALLONS		There are no Fracture Treatments records to display.	

Formation	Top
------------------	------------

Were open hole logs run? Yes
Date last log run: May 04, 2018

Were unusual drilling circumstances encountered? No
Explanation:

Other Remarks
There are no Other Remarks.

FOR COMMISSION USE ONLY	
Status: Accepted	1141816

API NO. 35-019-26292
OTC PROD. UNIT NO. 11307

(PLEASE TYPE OR USE BLACK INK ONLY)

OKLAHOMA CORPORATION COMMISSION

Oil & Gas Conservation Division

Post Office Box 52000

Oklahoma City, Oklahoma 73152-2000

Rule 165:10-3-25

RECEIVED

JAN 07 2018

Oklahoma Corporation
Commission

Form 1002A

Rev. 2009

☒ ORIGINAL
☐ AMENDED (Reason)

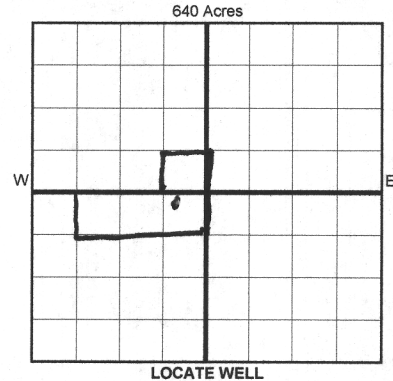
COMPLETION REPORT

TYPE OF DRILLING OPERATION

☒ STRAIGHT HOLE ☐ DIRECTIONAL HOLE ☐ HORIZONTAL HOLE
☐ SERVICE WELL

If directional or horizontal, see reverse for bottom hole location.

COUNTY	CARTER	SEC	26	TWP	2S	RGE	2W	SPUD DATE	4-30-18
LEASE NAME	WB JOHNSON			WELL NO.	5	DRLG FINISHED DATE	5-4-18	DATE OF WELL COMPLETION	11-26-18
NW 1/4 NE 1/4 NE 1/4 SW 1/4	FSL OF 1/4 SEC	2350	FWL OF 1/4 SEC	2219	1st PROD DATE	12-4-18	RECOMP DATE		
ELEVATION Derrick FL	Ground	941	Latitude (if known)		Longitude (if known)				
OPERATOR NAME	PAUL BURTON, LLC			OTC/OCC OPERATOR NO.	11307				
ADDRESS	2435 DEESE RD.								
CITY	ARDMORE	STATE	OK	ZIP	73401				



COMPLETION TYPE

☒ SINGLE ZONE
☐ MULTIPLE ZONE
Application Date
COMMINGLED
Application Date
LOCATION EXCEPTION
ORDER NO.
INCREASED DENSITY
ORDER NO.

CASING & CEMENT (Form 1002C must be attached)

TYPE	SIZE	WEIGHT	GRADE	FEET	PSI	SAX	TOP OF CMT
CONDUCTOR							
SURFACE							
INTERMEDIATE							
PRODUCTION	5 1/2	15.5		1197		125 287	SURFACE
LINER							
TOTAL DEPTH						1,198	

Per 1002C
CBL shows good bond DKN

PACKER @ _____ BRAND & TYPE _____ PLUG @ _____ TYPE _____ PLUG @ _____ TYPE _____
PACKER @ _____ BRAND & TYPE _____ PLUG @ _____ TYPE _____ PLUG @ _____ TYPE _____

COMPLETION & TEST DATA BY PRODUCING FORMATION

FORMATION	DEESE								
SPACING & SPACING ORDER NUMBER	none								No Frac
CLASS: Oil, Gas, Dry, Inj, Disp, Comm Disp, Svc	OIL								
PERFORATED INTERVALS	1075-1100								
ACID/VOLUME	2500 GALS								
FRACTURE TREATMENT (Fluids/Prop Amounts)									

Min Gas Allowable (165:10-17-7)

Gas Purchaser/Measurer

First Sales Date

OR
Oil Allowable (165:10-13-3)

INITIAL TEST DATA

INITIAL TEST DATE	12/4/2018								
OIL-BBL/DAY	3								
OIL-GRAVITY (API)	24								
GAS-MCF/DAY									
GAS-OIL RATIO CU FT/BBL									
WATER-BBL/DAY	0								
PUMPING OR FLOWING	PUMP								
INITIAL SHUT-IN PRESSURE	0								
CHOKE SIZE									
FLOW TUBING PRESSURE									

AS SUBMITTED

A record of the formations drilled through, and pertinent remarks are presented on the reverse. I declare that I have knowledge of the contents of this report and am authorized by my organization to make this report, which was prepared by me or under my supervision and direction, with the data and facts stated herein to be true, correct, and complete to the best of my knowledge and belief.

Jessie Burton
SIGNATURE

TESSIE BURTON, MANAGER

1/2/2019

580-465-1990

2435 DEESE RD.

ARDMORE

NAME (PRINT OR TYPE)

73401

DATE

PHONE NUMBER

ADDRESS

CITY

STATE

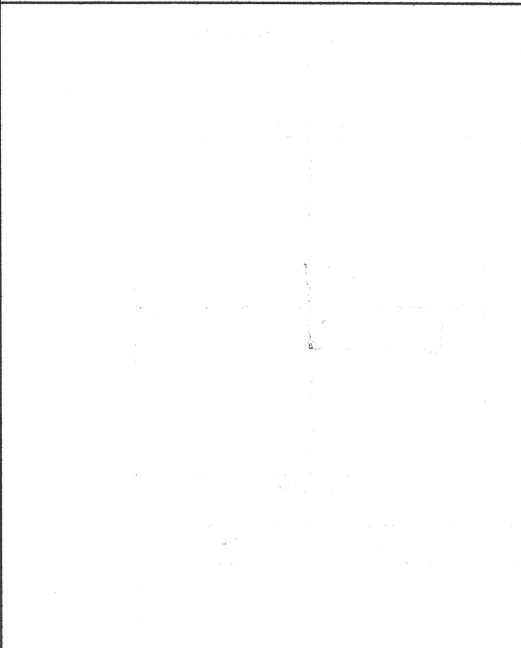
ZIP

NWILDCATJIM@YAHOO.COM

EMAIL ADDRESS

Give formation names and tops, if available, or descriptions and thickness of formations drilled through. Show intervals cored or drillstem tested.

WELL NO. _____

NAMES OF FORMATIONS	TOP
	<p>1. ...</p> <p>2. ...</p> <p>3. ...</p> <p>4. ...</p> <p>5. ...</p> <p>6. ...</p> <p>7. ...</p> <p>8. ...</p> <p>9. ...</p> <p>10. ...</p> <p>11. ...</p> <p>12. ...</p> <p>13. ...</p> <p>14. ...</p> <p>15. ...</p> <p>16. ...</p> <p>17. ...</p> <p>18. ...</p> <p>19. ...</p> <p>20. ...</p> <p>21. ...</p> <p>22. ...</p> <p>23. ...</p> <p>24. ...</p> <p>25. ...</p> <p>26. ...</p> <p>27. ...</p> <p>28. ...</p> <p>29. ...</p> <p>30. ...</p> <p>31. ...</p> <p>32. ...</p> <p>33. ...</p> <p>34. ...</p> <p>35. ...</p> <p>36. ...</p> <p>37. ...</p> <p>38. ...</p> <p>39. ...</p> <p>40. ...</p> <p>41. ...</p> <p>42. ...</p> <p>43. ...</p> <p>44. ...</p> <p>45. ...</p> <p>46. ...</p> <p>47. ...</p> <p>48. ...</p> <p>49. ...</p> <p>50. ...</p> <p>51. ...</p> <p>52. ...</p> <p>53. ...</p> <p>54. ...</p> <p>55. ...</p> <p>56. ...</p> <p>57. ...</p> <p>58. ...</p> <p>59. ...</p> <p>60. ...</p> <p>61. ...</p> <p>62. ...</p> <p>63. ...</p> <p>64. ...</p> <p>65. ...</p> <p>66. ...</p> <p>67. ...</p> <p>68. ...</p> <p>69. ...</p> <p>70. ...</p> <p>71. ...</p> <p>72. ...</p> <p>73. ...</p> <p>74. ...</p> <p>75. ...</p> <p>76. ...</p> <p>77. ...</p> <p>78. ...</p> <p>79. ...</p> <p>80. ...</p> <p>81. ...</p> <p>82. ...</p> <p>83. ...</p> <p>84. ...</p> <p>85. ...</p> <p>86. ...</p> <p>87. ...</p> <p>88. ...</p> <p>89. ...</p> <p>90. ...</p> <p>91. ...</p> <p>92. ...</p> <p>93. ...</p> <p>94. ...</p> <p>95. ...</p> <p>96. ...</p> <p>97. ...</p> <p>98. ...</p> <p>99. ...</p> <p>100. ...</p>

FOR COMMISSION USE ONLY	
ITD on file	<input type="checkbox"/> YES <input type="checkbox"/> NO
APPROVED	DISAPPROVED
	2) Reject Codes <hr/> <hr/> <hr/> <hr/> <hr/>

Were open hole logs run? X yes no

Date Last log was run 5/4/2018

Was CO₂ encountered? yes X no at what depths?

Was H₂S encountered? yes X no at what depths?

Were unusual drilling circumstances encountered? yes X no

If yes, briefly explain below

Other remarks:

640 Acres

Direction must be stated in degrees azimuth.
Please note, the horizontal drainhole and its end point must be located within the boundaries of the lease or spacing unit.

640 Acres

A blank 10x10 grid with a thick vertical line in the 5th column and a thick horizontal line in the 5th row, dividing the grid into four 5x5 quadrants. The top-left quadrant is shaded gray.

SEC	TWP	RGE	COUNTY
Spot Location			
1/4	1/4	1/4	1/4
Measured Total Depth	True Vertical Depth	BHL From Lease, Unit, or Property Line:	

LATERAL #1						
SEC	TWP	RGE	COUNTY			
Spot Location						
1/4	1/4	1/4	Feet From 1/4 Sec Lines	FSL	FWL	
Depth of Deviation		Radius of Turn	Direction	Total Length		
Measured Total Depth		True Vertical Depth	BHL From Lease, Unit, or Property Line:			

SEC	TWP	RGE	COUNTY			
Spot Location				Feet From 1/4 Sec Lines	FSL	FWL
1/4	1/4	1/4	1/4			
Depth of Deviation		Radius of Turn	Direction	Total Length		
Measured Total Depth		True Vertical Depth	BHL From Lease, Unit, or Property Line:			

SEC	TWP	RGE	COUNTY			
Spot Location				Feet From 1/4 Sec Lines	FSL	FWL
1/4	1/4	1/4	1/4			
Depth of Deviation		Radius of Turn	Direction	Total Length		
Measured Total Depth		True Vertical Depth	BHL From Lease, Unit, or Property Line:			