

Oklahoma Corporation Commission  
Oil & Gas Conservation Division  
Post Office Box 52000  
Oklahoma City, Oklahoma 73152-2000  
Rule 165: 10-3-25

Form 1002A

API No.: 35071247200002

**Completion Report**

Spud Date: December 14, 2013

OTC Prod. Unit No.: 071-212687-0-0000

Drilling Finished Date: December 24, 2013

**Amended**

1st Prod Date: April 26, 2014

Amend Reason: RECOMPLETION

Completion Date: April 25, 2014

Recomplete Date: November 29, 2018

**Drill Type: STRAIGHT HOLE**

Well Name: STEVE 1-36

Purchaser/Measurer:

Location: KAY 36 27N 1E  
SE NW SW SW  
950 FSL 400 FWL of 1/4 SEC  
Latitude: 36.7703082 Longitude: -97.1554048  
Derrick Elevation: 1047 Ground Elevation: 1038

First Sales Date:

Operator: ORION EXPLORATION LLC 22221

4870 S LEWIS AVE STE 240  
TULSA, OK 74105-5153

Completion Type		Location Exception		Increased Density	
	Single Zone	Order No		Order No	
	Multiple Zone	There are no Location Exception records to display.		There are no Increased Density records to display.	
X	Commingled				

Casing and Cement							
Type	Size	Weight	Grade	Feet	PSI	SAX	Top of CMT
SURFACE	9 5/8	36	J-55	350		200	SURFACE
PRODUCTION	5 1/2	17	L-80	4280		270	3584

Liner								
Type	Size	Weight	Grade	Length	PSI	SAX	Top Depth	Bottom Depth
There are no Liner records to display.								

**Total Depth: 4280**

Packer	
Depth	Brand & Type
There are no Packer records to display.	

Plug	
Depth	Plug Type
3660	CBP
3890	CBP
4150	CBP

Initial Test Data
-------------------

Test Date	Formation	Oil BBL/Day	Oil-Gravity (API)	Gas MCF/Day	Gas-Oil Ratio Cu FT/BBL	Water BBL/Day	Pumpin or Flowing	Initial Shut-In Pressure	Choke Size	Flow Tubing Pressure
Nov 12, 2018	CLEVELAND	15				110				
Nov 29, 2018	LAYTON	10				1100				

#### Completion and Test Data by Producing Formation

Formation Name: LAYTON

Code: 405LYTN

Class: OIL

##### Spacing Orders

Order No	Unit Size
N/A	

##### Perforated Intervals

From	To
2898	2924

##### Acid Volumes

1,000 GALLONS 15% HCL, 776 BARRELS
------------------------------------

##### Fracture Treatments

There are no Fracture Treatments records to display.
--

Formation Name: CLEVELAND

Code: 405CLVD

Class: OIL

##### Spacing Orders

Order No	Unit Size
N/A	

##### Perforated Intervals

From	To
3234	3250

##### Acid Volumes

1,000 GALLONS 15% HCL, 754 BARRELS
------------------------------------

##### Fracture Treatments

There are no Fracture Treatments records to display.
--

Formation	Top
LAYTON	2900
CLEVELAND	3210

Were open hole logs run? Yes

Date last log run: December 20, 2013

Were unusual drilling circumstances encountered? No

Explanation:

#### Other Remarks

There are no Other Remarks.

#### FOR COMMISSION USE ONLY

1143347

Status: Accepted

API NO. 071-24720  
OTC PROD. UNIT NO. 071-212687

(PLEASE TYPE OR USE BLACK INK ONLY)

OKLAHOMA CORPORATION COMMISSION

Oil & Gas Conservation Division

Post Office Box 52000

Oklahoma City, Oklahoma 73152-2000

Rule 165:10-3-25

RECEIVED

Form 1002A

Rev. 2009

JUL 01 2019

OKLAHOMA CORPORATION COMMISSION

640 Acres

ORIGINAL  
☒ AMENDED (Reason)

RE-COMPLETION

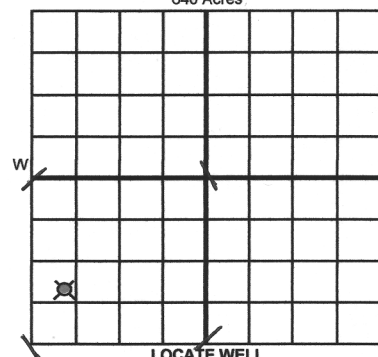
COMPLETION REPORT

TYPE OF DRILLING OPERATION

☒ STRAIGHT HOLE ☐ DIRECTIONAL HOLE ☐ HORIZONTAL HOLE  
☐ SERVICE WELL

If directional or horizontal, see reverse for bottom hole location.

COUNTY	KAY	SEC	36	TWP	27N	RGE	IE	SPUD DATE	12/14/2013
LEASE NAME	STEVE							DRLG FINISHED DATE	12/24/2013
SE 1/4 NW 1/4 SW 1/4 SW 1/4	FSL OF 1/4 SEC		950	FWL OF 1/4 SEC		400		DATE OF WELL COMPLETION	4/25/2014
ELEVATION Derrick FL	1047	Ground	1038	Latitude (if known)		36.7703082		1st PROD DATE	4/26/2014
OPERATOR NAME	ORION EXPLORATION, LLC							RECOMP DATE	11/29/2018
ADDRESS	4870 S. LEWIS AVE, STE 240							Longitude (if known)	~ 97.1554048
CITY	TULSA		STATE	OK		ZIP	74105		



COMPLETION TYPE

<input type="checkbox"/> SINGLE ZONE	
<input type="checkbox"/> MULTIPLE ZONE	
<input checked="" type="checkbox"/> COMMINGLED	03/27/19
LOCATION EXCEPTION ORDER NO.	
INCREASED DENSITY ORDER NO.	

CASING & CEMENT (Attach Form 1002C)

TYPE	SIZE	WEIGHT	GRADE	FEET	PSI	SAX	TOP OF CMT
CONDUCTOR							
SURFACE	9 5/8	36#	J-55	350		200	surface
INTERMEDIATE							
PRODUCTION	5 1/2	17#	L-80	4280		270	3584
LINER							
TOTAL DEPTH							4,280

PACKER @ \_\_\_\_\_ BRAND & TYPE \_\_\_\_\_ PLUG @ 4150 TYPE CBP PLUG @ 3660 TYPE CBP  
PACKER @ \_\_\_\_\_ BRAND & TYPE \_\_\_\_\_ PLUG @ 3890 TYPE CBP PLUG @ \_\_\_\_\_ TYPE \_\_\_\_\_

COMPLETION & TEST DATA BY PRODUCING FORMATION

FORMATION	LAYTON	CLEVELAND				
SPACING & SPACING ORDER NUMBER	N/A	N/A				No Frac
CLASS: Oil, Gas, Dry, Inj, Disp, Comm Disp, Svc	OIL	OIL				
PERFORATED INTERVALS	2914-2924	3234-3250				
ACID/VOLUME	15% HCL-1000 GAL	15% HCL-1000 GAL				
FRACTURE TREATMENT (Fluids/Prop Amounts)	776 BBLs	754 BBLs				

Min Gas Allowable (165:10-17-7)

Gas Purchaser/Measurer

INITIAL TEST DATA

Oil Allowable (165:10-13-3)

First Sales Date

INITIAL TEST DATE	11/29/2018	11/12/2018			
OIL-BBL/DAY	10 BOPD	15 BOPD			
OIL-GRAVITY ( API)					
GAS-MCF/DAY	0 MCFD	0 MCFD			
GAS-OIL RATIO CU FT/BBL					
WATER-BBL/DAY	1100 BWPD	110 BWPD			
PUMPING OR FLOWING					
INITIAL SHUT-IN PRESSURE					
CHOKE SIZE					
FLOW TUBING PRESSURE					

AS SUBMITTED

A record of the formations drilled through, and pertinent remarks are presented on the reverse. I declare that I have knowledge of the contents of this report and am authorized by my organization to make this report, which was prepared by me or under my supervision and direction, with the data and facts stated herein to be true, correct, and complete to the best of my knowledge and belief.

SIGNATURE	STEVE MILLER	DATE	6-26-19	PHONE NUMBER	918-492-0254
ADDRESS	4870 S LEWIS AVE, STE 240	CITY	TULSA	STATE	OK
		ZIP	74105	EMAIL ADDRESS	STEVE@ORIONEXPLORATION.COM

Give formation names and tops, if available, or descriptions and thickness of formations drilled through. Show intervals cored or drillstem tested.

FOR COMMISSION USE ONLY	
ITD on file	<input type="checkbox"/> YES <input type="checkbox"/> NO
APPROVED	DISAPPROVED
2) Reject Codes	

Were open hole logs run?	<u>X</u>	yes	<u>    </u>	no
Date Last log was run	<u>12/20/2013</u>			
Was CO <sub>2</sub> encountered?	<u>    </u>	yes	<u>    </u>	no at what depths? <u>                    </u>
Was H <sub>2</sub> S encountered?	<u>    </u>	yes	<u>    </u>	no at what depths? <u>                    </u>
Were unusual drilling circumstances encountered?	<u>    </u>	yes	<u>    </u>	no
If yes, briefly explain below				

Other remarks:

Direction must be stated in degrees azimuth.  
Please note, the horizontal drainhole and its end point must be located within the boundaries of the lease or spacing unit.

SEC	TWP	RGE	COUNTY			
Spot Location			Feet From 1/4 Sec Lines		FSL	FWL
1/4	1/4	1/4	1/4			
Measured Total Depth		True Vertical Depth		BHL From Lease, Unit, or Property Line:		

LATERAL #1						
SEC	TWP	RGE	COUNTY			
Spot Location 1/4                      1/4                      1/4                      1/4				Feet From 1/4 Sec Lines	FSL	FWL
Depth of Deviation		Radius of Turn		Direction	Total Length	
Measured Total Depth		True Vertical Depth		BHL From Lease, Unit, or Property Line:		

SEC	TWP	RGE	COUNTY				
Spot Location			Feet From 1/4 Sec Lines		FSL		FWL
1/4	1/4	1/4	1/4				
Depth of Deviation		Radius of Turn	Direction	Total Length			
Measured Total Depth		True Vertical Depth	BHL From Lease, Unit, or Property Line:				

SEC	TWP	RGE	COUNTY				
Spot Location				Feet From 1/4 Sec Lines		FSL	FWL
1/4	1/4	1/4	1/4				
Depth of Deviation		Radius of Turn		Direction		Total Length	
Measured Total Depth		True Vertical Depth		BHL From Lease, Unit, or Property Line:			