

Oklahoma Corporation Commission
Oil & Gas Conservation Division
Post Office Box 52000
Oklahoma City, Oklahoma 73152-2000
Rule 165: 10-3-25

Form 1002A

API No.: 35133203370001

Completion Report

Spud Date: October 20, 1969

OTC Prod. Unit No.: 133-033303-0-0000

Drilling Finished Date: October 28, 1969

Amended

1st Prod Date: November 12, 1969

Amend Reason: RECOMPLETION

Completion Date: November 11, 1969

Recomplete Date: November 04, 2021

Drill Type: STRAIGHT HOLE

Well Name: FRANK HARJOCHE 14

Purchaser/Measurer:

Location: SEMINOLE 10 8N 6E
E2 SW NW SW
1650 FSL 500 FWL of 1/4 SEC
Latitude: 35.1783824 Longitude: -96.6681988
Derrick Elevation: 0 Ground Elevation: 915

First Sales Date:

Operator: KEENER OIL & GAS COMPANY 19336

1648 S BOSTON AVE STE 200
TULSA, OK 74119-4416

Completion Type		Location Exception		Increased Density	
X	Single Zone	Order No		Order No	
	Multiple Zone	There are no Location Exception records to display.		There are no Increased Density records to display.	
	Commingled				

Casing and Cement							
Type	Size	Weight	Grade	Feet	PSI	SAX	Top of CMT
SURFACE	10.75	32	8R	894		580	SURFACE
PRODUCTION	7	20	8R	4435		150	

Liner								
Type	Size	Weight	Grade	Length	PSI	SAX	Top Depth	Bottom Depth
There are no Liner records to display.								

Total Depth: 4265

Packer	
Depth	Brand & Type
3835.65	7" CPW

Plug	
Depth	Plug Type
4080	CIBP
4239	PBTD

Initial Test Data

Test Date	Formation	Oil BBL/Day	Oil-Gravity (API)	Gas MCF/Day	Gas-Oil Ratio Cu FT/BBL	Water BBL/Day	Pumpin or Flowing	Initial Shut-In Pressure	Choke Size	Flow Tubing Pressure
Nov 11, 2021	MARSHALL	14	35			650	PUMPING			

Completion and Test Data by Producing Formation									
Formation Name: MARSHALL				Code: 202MRSL			Class: OIL		
Spacing Orders				Perforated Intervals					
Order No		Unit Size		From			To		
N/A				4038			4050		
Acid Volumes				Fracture Treatments					
500 BARRELS 15%				There are no Fracture Treatments records to display.					

Formation	Top
MARSHALL	4038

Were open hole logs run? No

Date last log run:

Were unusual drilling circumstances encountered? No

Explanation:

Other Remarks
There are no Other Remarks.

FOR COMMISSION USE ONLY
<div>Status: Accepted</div> <div>1147375</div>

API NO. 35-133-20337
OTC PROD. UNIT NO. 133-033303

Oil and Gas Conservation Division
P.O. Box 52000
Oklahoma City, OK 73152-2000
405-521-2331
OCCentralProcessing@OCC.OK.GOV



OKLAHOMA
Corporation
Commission

Form 1002A
Rev. 2021

ORIGINAL
AMENDED (Reason) RECOMPLETION

Rule 165:10-3-25

COMPLETION REPORT

TYPE OF DRILLING OPERATION

☒ STRAIGHT HOLE ☐ DIRECTIONAL HOLE ☐ HORIZONTAL HOLE

☐ SERVICE WELL

If directional or horizontal, see reverse for bottom hole location.

COUNTY SEMINOLE SEC 10 TWP 8N RGE 6E

LEASE NAME FRANK HARJOCHÉ WELL NO. 14

E/2 1/4 SW 1/4 NW 1/4 SW 1/4 FSL 1650 FWL 500

ELEVATION Ground 914.6 Latitude Longitude

OPERATOR NAME KEENER OIL & GAS COMPANY OTC/OCC OPERATOR NO. 19336-0

ADDRESS 1648 S BOSTON AVE, STE 200

CITY TULSA STATE OK ZIP 74119

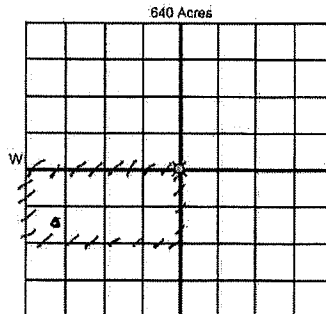
SPUD DATE 10-20-1969

DRLG FINISHED DATE 10-28-1969

DATE OF WELL COMPLETION 11-11-1969

1st PROD DATE 11-12-1969

RECOMP DATE 11-4-2021



COMPLETION TYPE

☒ SINGLE ZONE
☐ MULTIPLE ZONE
☐ COMMINGLED
LOCATION EXCEPTION ORDER NO.
MULTIUNIT ORDER NO.
INCREASED DENSITY ORDER NO.

CASING & CEMENT (Attach Form 1002C)

TYPE	SIZE	WEIGHT	GRADE	FEET	PSI	SAX	TOP OF CMT
CONDUCTOR							
SURFACE	10.75"	32	8r	894		580	surface
INTERMEDIATE							
PRODUCTION	7"	20	8r	4435		150	
LINER							

PACKER @ 3835.65 BRAND & TYPE 7" CPW PLUG @ 4080" TYPE 7" CIBP PLUG @ TYPE TOTAL 4265
PACKER @ BRAND & TYPE PLUG @ 4239 TYPE PBD PLUG @ TYPE DEPTH 4265 (PBD)

COMPLETION & TEST DATA BY PRODUCING FORMATION

FORMATION	MARSHALL					No Frac
SPACING & SPACING ORDER NUMBER	NA					
CLASS: Oil, Gas, Dry, Int, Disp, Comm Disp, Svc	Oil					
PERFORATED INTERVALS	4038-4050					RECEIVED DEC 20 2021 OKLAHOMA CORPORATION COMMISSION
ACID/VOLUME	500 bbls	15%				
FRACTURE TREATMENT (Fluids/Prop Amounts)						

Min Gas Allowable (165:10-17-7)

OR

Oil Allowable (165:10-13-3)

Purchaser/Measurer

First Sales Date

INITIAL TEST DATA

INITIAL TEST DATE	11-11-2021					
OIL-BBL/DAY	14					
OIL-GRAVITY (API)	35					
GAS-MCF/DAY	NA					
GAS-OIL RATIO CU FT/BBL						
WATER-BBL/DAY	650					
PUMPING OR FLOWING	PUMPING					
INITIAL SHUT-IN PRESSURE						
CHOKE SIZE	NA					
FLOW TUBING PRESSURE	NA					

A record of the formations drilled through, and pertinent remarks are presented on the reverse. I declare that I have knowledge of the contents of this report and am authorized by my organization to make this report, which was prepared by me or under my supervision and direction, with the data and facts stated herein to be true, correct, and complete to the best of my knowledge and belief.

SIGNATURE DEWEY F. BARTLETT, JR. DATE 12/15/2021 PHONE NUMBER (918) 587-4154
1648 S BOSTON AVE, STE 200 TULSA OK 74119 dewey@keeneroil.com
ADDRESS CITY STATE ZIP EMAIL ADDRESS

PLEASE TYPE OR USE BLACK INK ONLY
FORMATION RECORD

Give formation names and tops, if available, or descriptions and thickness of formations drilled through. Show intervals cored or drillstem tested.

LEASE NAME FRANK HARJOCHÉ

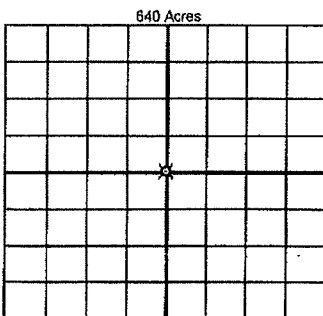
WELL NO. 14

NAMES OF FORMATIONS	TOP
MARSHALL	4038

FOR COMMISSION USE ONLY	
ITD on file <input type="checkbox"/> YES <input type="checkbox"/> NO	
APPROVED _____	DISAPPROVED _____
2) Reject Codes	

Were open hole logs run?	<input type="radio"/> yes <input checked="" type="radio"/> no
Date last log was run	_____
Was CO ₂ encountered?	<input type="radio"/> yes <input checked="" type="radio"/> no at what depths? _____
Was H ₂ S encountered?	<input type="radio"/> yes <input checked="" type="radio"/> no at what depths? _____
Were unusual drilling circumstances encountered?	<input type="radio"/> yes <input checked="" type="radio"/> no
If yes, briefly explain below	

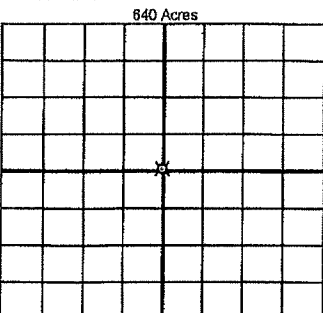
Other remarks:



If more than three drainholes are proposed, attach a separate sheet indicating the necessary information.

Direction must be stated in degrees azimuth. Please note, the horizontal drainhole and its end point must be located within the boundaries of the lease or spacing unit.

Directional surveys are required for all drainholes and directional wells



BOTTOM HOLE LOCATION FOR DIRECTIONAL HOLE

SEC	TWP	RGE	COUNTY
1/4	1/4	1/4	1/4
Measured Total Depth	True Vertical Depth	Feet From 1/4 Sec Lines	
		BHL From Lease, Unit, or Property Line:	

BOTTOM HOLE LOCATION FOR HORIZONTAL HOLE: (LATERALS)

LATERAL #1			
SEC	TWP	RGE	COUNTY
1/4	1/4	1/4	1/4
Depth of Deviation	Radius of Turn	Direction	Total Length
Measured Total Depth	True Vertical Depth	BHL From Lease, Unit, or Property Line:	

LATERAL #2			
SEC	TWP	RGE	COUNTY
1/4	1/4	1/4	1/4
Depth of Deviation	Radius of Turn	Direction	Total Length
Measured Total Depth	True Vertical Depth	BHL From Lease, Unit, or Property Line:	

LATERAL #3			
SEC	TWP	RGE	COUNTY
1/4	1/4	1/4	1/4
Depth of Deviation	Radius of Turn	Direction	Total Length
Measured Total Depth	True Vertical Depth	BHL From Lease, Unit, or Property Line:	