

Oklahoma Corporation Commission
Oil & Gas Conservation Division
Post Office Box 52000
Oklahoma City, Oklahoma 73152-2000
Rule 165: 10-3-25

Form 1002A

API No.: 35019264420000

Completion Report

Spud Date: September 05, 2021

OTC Prod. Unit No.: 019-227521-0-0000

Drilling Finished Date: October 23, 2021

1st Prod Date: December 11, 2021

Completion Date: November 28, 2021

Drill Type: HORIZONTAL HOLE

Min Gas Allowable: Yes

Well Name: JUSTIFY 1-10-15-22XHM

Purchaser/Measurer: ENERGY TRANSFER
CRUDE MARKETING

First Sales Date: 12/15/2021

Location: CARTER 10 2S 3W
NW NE NE SE
2615 FSL 385 FEL of 1/4 SEC
Latitude: 34.397832 Longitude: -97.493447
Derrick Elevation: 0 Ground Elevation: 959

Operator: CITATION OIL & GAS CORPORATION 14156

14077 CUTTEN RD
HOUSTON, TX 77069-2212

Completion Type		Location Exception		Increased Density	
X	Single Zone	Order No		Order No	
	Multiple Zone	722681		There are no Increased Density records to display.	
	Commingled				

Casing and Cement							
Type	Size	Weight	Grade	Feet	PSI	SAX	Top of CMT
CONDUCTOR	20			96			SURFACE
SURFACE	13.375	54.5	J-55	2428	500	1360	SURFACE
INTERMEDIATE	9.625	40	HCP-110	8499	500	760	3769
PRODUCTION	5.5	20	FC	18584	1000	1930	7964

Liner								
Type	Size	Weight	Grade	Length	PSI	SAX	Top Depth	Bottom Depth
There are no Liner records to display.								

Total Depth: 18619

Packer	
Depth	Brand & Type
There are no Packer records to display.	

Plug	
Depth	Plug Type
There are no Plug records to display.	

Initial Test Data

Test Date	Formation	Oil BBL/Day	Oil-Gravity (API)	Gas MCF/Day	Gas-Oil Ratio Cu FT/BBL	Water BBL/Day	Pumpin or Flowing	Initial Shut-In Pressure	Choke Size	Flow Tubing Pressure
Dec 11, 2021	ALL ZONES PRODUCING	83	38.8			2678	FLOWING		42/64	

Completion and Test Data by Producing Formation

Formation Name: SYCAMORE

Code: 352SCMR

Class: OIL

Spacing Orders

Order No	Unit Size
717661	640
718338	640
722634	MULTIUNIT

Perforated Intervals

From	To
9530	12268
12528	18021

Acid Volumes

N/A

Fracture Treatments

501,647 BARRELS FLUIDS
20,707,990 POUNDS SAND

Formation Name: WOODFORD

Code: 319WDFD

Class: OIL

Spacing Orders

Order No	Unit Size
717661	640
722634	MULTIUNIT

Perforated Intervals

From	To
12268	12528

Acid Volumes

N/A

Fracture Treatments

FRAC'D WITH SYCAMORE

Formation Name: SYCAMORE UNDERTHRUST

Code: 352SCUTD

Class: OIL

Spacing Orders

Order No	Unit Size
718325	320
722634	MULTIUNIT

Perforated Intervals

From	To
18021	18509

Acid Volumes

N/A

Fracture Treatments

FRAC'D WITH SYCAMORE

Formation	Top
SPRINGER	4610
HUMPHREYS	5874
SIMS	6351
FLATTOP	6959
CANEY	8727
SYCAMORE	9019

Were open hole logs run? Yes

Date last log run: September 25, 2021

Were unusual drilling circumstances encountered? No

Explanation:

Other Remarks
NEW HORIZONTAL DRILL. OCC - OPERATOR SET D-V TOOL IN SURFACE CASING AT 1,385' (SEE 1002C) OCC - SYCAMORE/ SYCAMORE UNDERTHRUST AND THE WOODFORD ARE ASSOCIATED COMMON SORCES OF SUPPLY.

Lateral Holes
Sec: 22 TWP: 2S RGE: 3W County: CARTER SW NE NE NE 525 FNL 401 FEL of 1/4 SEC Depth of Deviation: 8819 Radius of Turn: 552 Direction: 179 Total Length: 9578 Measured Total Depth: 18619 True Vertical Depth: 12679 End Pt. Location From Release, Unit or Property Line: 401

FOR COMMISSION USE ONLY	
Status: Accepted	1147380

API NO. 35-019-26442
OTC PROD. UNIT NO. 014-227521-0-000

Oil and Gas Conservation Division
P.O. Box 52000
Oklahoma City, OK 73152-2000
405-521-2331
OCCCentralProcessing@OCC.OK.GOV



OKLAHOMA
Corporation
Commission

Form 1002A
Rev. 2020

ORIGINAL
AMENDED (Reason)

Rule 185:10-3-25

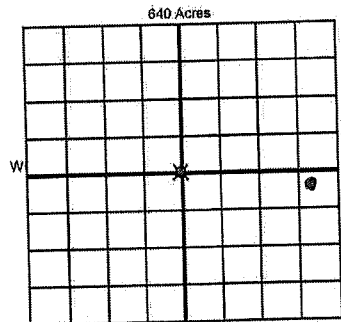
COMPLETION REPORT

TYPE OF DRILLING OPERATION
☐ STRAIGHT HOLE ☐ DIRECTIONAL HOLE ☒ HORIZONTAL HOLE
☐ SERVICE WELL

SPUD DATE 9/5/2021
DRLG FINISHED DATE 10/23/2021
DATE OF WELL COMPLETION 11/28/2021
1st PROD DATE 12/11/2021
RECOMP DATE

If directional or horizontal, see reverse for bottom hole location.

COUNTY Carter SEC 10 TWP 02S RGE 03W
LEASE NAME JUSTIFY
NW 1/4 NE 1/4 NE 1/4 SE 1/4 FSL 2615 EWL 385
ELEVATION Ground 959' Latitude 34.397832N Longitude -97.493447W
OPERATOR Citation Oil & Gas Corp. OTC / OCC OPERATOR NO. 14156
ADDRESS 14077 Cutten Rd
CITY Houston STATE TX ZIP 77069-2212



LOCATE WELL

COMPLETION TYPE

☒ SINGLE ZONE
☐ MULTIPLE ZONE
☐ COMMINGLED
LOCATION EXCEPTION ORDER NO. 722691 748723 50
MULTIUNIT ORDER NO. 722634 748722 50
INCREASED DENSITY ORDER NO.

CASING & CEMENT (Attach Form 1002C)

TYPE	SIZE	WEIGHT	GRADE	FEET	PSI	SAX	TOP OF CMT
CONDUCTOR	20"			96'			0
SURFACE	13.375'	54.5#	J-55	2428'	500#	1360	0
INTERMEDIATE	9.825'	40#	HCP-110	8499	500#	760	4730' 3769
PRODUCTION	5.5'	20#	FC	18584'	1000#	1930	7984'
LINER							

PACKER @ BRAND & TYPE PLUG @ TYPE PLUG @ TYPE PLUG @ TYPE
PACKER @ BRAND & TYPE PLUG @ TYPE PLUG @ TYPE PLUG @ TYPE
TOTAL DEPTH 18,619'

COMPLETION & TEST DATA BY PRODUCING FORMATION

FORMATION	Sycamore	Woodford	Sycamore	Underthrust	Monitor Report to Frac Focus
SPACING & SPACING ORDER NUMBER	717661(640)-718338(640)-718325(320)	717661(640)	718338(640)	718325(320)	
CLASS: Oil, Gas, Dry, Inj, Disp, Comm Disp, Svc	Oil				722634 MLL
PERFORATED INTERVALS	(9530-18509) overkill zones 9530-12268 12268-12528 12528-18021	12268-12528	18021-18509		RECEIVED DEC 28 2021
ACID/VOLUME	N/A				OKLAHOMA CORPORATION COMMISSION
FRACTURE TREATMENT (Fluids/Prop Amounts)	501,647 bbls of fluids 20,707,990 lbs of sand				

Min Gas Allowable (185:10-17-7)
OR
Oil Allowable (185:10-13-3)

Purchaser/Measurer
First Sales Date
Energy Transfer Crude Marketing
12/15/2021

INITIAL TEST DATA

INITIAL TEST DATE	12/11/2021				
OIL-BBL/DAY	83				
OIL-GRAVITY (API)	38.84				
GAS-MCF/DAY	0				
GAS-OIL RATIO CU FT/BBL	0				
WATER-BBL/DAY	2678				
PUMPING OR FLOWING	Flowing				
INITIAL SHUT-IN PRESSURE					
CHOKE SIZE	42/64				
FLOW-TUBING PRESSURE					

A record of the formations drilled through, and pertinent remarks are presented on the reverse. I declare that I have knowledge of the contents of this report and am authorized by my organization to make this report, which was prepared by me or under my supervision and direction, with the data and facts stated herein to be true, correct, and complete to the best of my knowledge and belief.

Sharon Ward

Sharon Ward
NAME (PRINT OR TYPE)

12/16/2021 281-891-1556
DATE PHONE NUMBER

14077 Cutten Rd

Houston

TX

77069

sward@cogc.com

EMAIL ADDRESS

ADDRESS

CITY

STATE

ZIP

PLEASE TYPE OR USE BLACK INK ONLY
FORMATION RECORD

Give formation names and tops, if available, or descriptions and thickness of formations drilled through. Show intervals cored or drillstem tested.

NAMES OF FORMATIONS	TOP
Springer	4610
Humphreys	5874
Sims	6351
Flattop	6959
Caney	8727
Sycamore	9019

LEASE NAME JUSTIFY

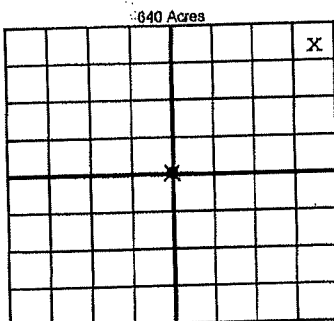
WELL NO. 1-10-15-22XHM

FOR COMMISSION USE ONLY	
ITD on file <input type="checkbox"/> YES <input type="checkbox"/> NO	
APPROVED _____	DISAPPROVED _____
2) Reject Codes	

Were open hole logs run?	<input checked="" type="radio"/> yes <input type="radio"/> no
Date Last log was run	9/25/2021
Was CO ₂ encountered?	<input type="radio"/> yes <input checked="" type="radio"/> no at what depths? _____
Was H ₂ S encountered?	<input type="radio"/> yes <input checked="" type="radio"/> no at what depths? _____
Were unusual drilling circumstances encountered?	<input type="radio"/> yes <input checked="" type="radio"/> no
If yes, briefly explain below	

Other remarks: New horizontal drill

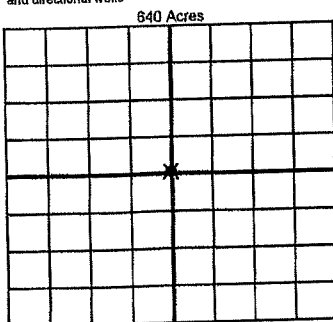
OCC - Operator Set D-V tool in surface casing at 1385' (see 1002C)



If more than three drainholes are proposed, attach a separate sheet indicating the necessary information.

Direction must be stated in degrees azimuth. Please note, the horizontal drainhole and its end point must be located within the boundaries of the lease or spacing unit.

Directional surveys are required for all drainholes and directional wells



BOTTOM HOLE LOCATION FOR DIRECTIONAL HOLE

SEC	TWP	RGE	COUNTY
1/4	1/4	1/4	1/4
Measured Total Depth		True Vertical Depth	Feet From 1/4 Sec Lines BHL From Lease, Unit, or Property Line:

BOTTOM HOLE LOCATION FOR HORIZONTAL HOLE: (LATERALS)

LATERAL #1			
SEC	TWP	RGE	COUNTY
22	02S	03W	Carter
NE 1/4	NE 1/4	NE 1/4	NE 1/4
Depth of Deviation	8819' MD (KOP)	Radius of Turn	552'
Measured Total Depth	18,619'	True Vertical Depth	12,679' 12,378.88'
Direction		179.54 AZIMUTH, SOUTH	Total Length 9578'
BHL From Lease, Unit, or Property Line:		401'	

LATERAL #2			
SEC	TWP	RGE	COUNTY
1/4	1/4	1/4	1/4
Depth of Deviation	Radius of Turn	Direction	Total Length
Measured Total Depth	True Vertical Depth	BHL From Lease, Unit, or Property Line:	

LATERAL #3			
SEC	TWP	RGE	COUNTY
1/4	1/4	1/4	1/4
Depth of Deviation	Radius of Turn	Direction	Total Length
Measured Total Depth	True Vertical Depth	BHL From Lease, Unit, or Property Line:	