

Oklahoma Corporation Commission  
Oil & Gas Conservation Division  
Post Office Box 52000  
Oklahoma City, Oklahoma 73152-2000  
Rule 165: 10-3-25

Form 1002A

API No.: 35047245570001

**Completion Report**

Spud Date: February 24, 2012

OTC Prod. Unit No.:

Drilling Finished Date: March 07, 2012

**Amended**

1st Prod Date: June 10, 2012

Amend Reason: RECOMPLETION

Completion Date: March 26, 2012

Recomplete Date: October 02, 2020

**Drill Type: STRAIGHT HOLE**

Well Name: HOTSON 49

Purchaser/Measurer:

Location: GARFIELD 25 22N 4W  
C NE NW  
1980 FSL 1980 FWL of 1/4 SEC  
Latitude: 36.359603 Longitude: -97.579675  
Derrick Elevation: 0 Ground Elevation: 1085

First Sales Date:

Operator: M M ENERGY INC 19118  
PO BOX 21904  
13927 QUAIL POINTE DR  
OKLAHOMA CITY, OK 73134-1904

Completion Type		Location Exception		Increased Density	
X	Single Zone	Order No		Order No	
	Multiple Zone	There are no Location Exception records to display.		There are no Increased Density records to display.	
	Commingled				

Casing and Cement							
Type	Size	Weight	Grade	Feet	PSI	SAX	Top of CMT
SURFACE	8 5/8	26	J	310		250	SURFACE
PRODUCTION	5 1/2	15.50	J	4994		490	2300

Liner								
Type	Size	Weight	Grade	Length	PSI	SAX	Top Depth	Bottom Depth
There are no Liner records to display.								

**Total Depth: 4994**

Packer	
Depth	Brand & Type
There are no Packer records to display.	

Plug	
Depth	Plug Type
4250	CIBP
4410	CIBP
4540	CIBP

Initial Test Data
-------------------

Test Date	Formation	Oil BBL/Day	Oil-Gravity (API)	Gas MCF/Day	Gas-Oil Ratio Cu FT/BBL	Water BBL/Day	Pumpin or Flowing	Initial Shut-In Pressure	Choke Size	Flow Tubing Pressure
Oct 21, 2020	TONKAWA	15	40			250	PUMPING			

#### Completion and Test Data by Producing Formation

Formation Name: TONKAWA

Code: 406TNKW

Class: OIL

#### Spacing Orders

Order No

Unit Size

There are no Spacing Order records to display.

#### Perforated Intervals

From

To

3246

3312

#### Acid Volumes

3,000 GALLONS

#### Fracture Treatments

800 BARRELS, 35,570 POUNDS SAND

Formation	Top
-----------	-----

Were open hole logs run? Yes

Date last log run: March 07, 2012

Were unusual drilling circumstances encountered? No

Explanation:

#### Other Remarks

OCC - OPERATOR SET A PORT COLLAR AT 3,480', USED 150 SACKS OF CEMENT, LIFTING CEMENT TO 2,300'.

#### FOR COMMISSION USE ONLY

Status: Accepted

1147251

API NO. 8724557  
OTC PROD.  
UNIT NO.

PLEASE TYPE OR USE BLACK INK ONLY  
NOTE:

Attach copy of original 1002A  
if recompletion or reentry.

OKLAHOMA CORPORATION COMMISSION  
Oil & Gas Conservation Division  
Post Office Box 52000  
Oklahoma City, Oklahoma 73152-2000  
Rule 165:10-3-25

Form 1002A  
Rev. 2009

☐ ORIGINAL  
☒ AMENDED (Reason)

RE-COMPLETION

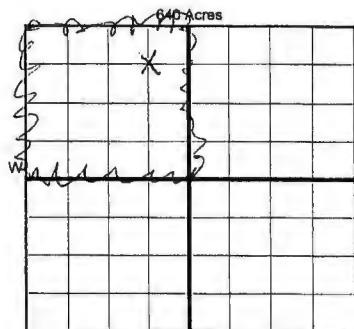
COMPLETION REPORT

TYPE OF DRILLING OPERATION

☒ STRAIGHT HOLE ☐ DIRECTIONAL HOLE ☐ HORIZONTAL HOLE  
☐ SERVICE WELL

If directional or horizontal, see reverse for bottom hole location.

COUNTY	Garfield	SEC	25	TWP	22n	RGE	4w	
LEASE NAME	Hotson			WELL NO.	49	DATE OF WELL COMPLETION	3/26/12	
1/4 C 1/4 ne 1/4 nw 1/4	FSL OF 1/4 SEC	1980	FWL OF 1/4 SEC	1980	1st PROD DATE	6/10/12	RECOMP DATE	10-2-2020
ELEVATION	Ground	1085	Latitude (if known)		Longitude (if known)			
OPERATOR NAME	MM Energy			OTC/OCC OPERATOR NO.	19118			
ADDRESS	P O Box 21904							
CITY	Oklahoma City	STATE	OK	ZIP	73156			



COMPLETION TYPE

<input checked="" type="checkbox"/> SINGLE ZONE
<input type="checkbox"/> MULTIPLE ZONE
Application Date
COMINGLED
Application Date
LOCATION
EXCEPTION ORDER
INCREASED DENSITY
ORDER NO.

CASING & CEMENT (Form 1002C must be attached)

TYPE	SIZE	WEIGHT	GRADE	FEET	PSI	SAX	TOP OF CMT
CONDUCTOR							
SURFACE	8 5/8	26#	J	310		250	SURFACE
INTERMEDIATE							
PRODUCTION	5 1/2	15.50	J	4994	490 340	3600 2300	
LINER	PC	set	at	3406	150	2300 ft	
						4,994	

PACKER @ \_\_\_\_\_ BRAND & TYPE \_\_\_\_\_ PLUG @ \_\_\_\_\_ TYPE CIBP PLUG @ 4250 TYPE \_\_\_\_\_  
PACKER @ \_\_\_\_\_ BRAND & TYPE \_\_\_\_\_ PLUG @ \_\_\_\_\_ TYPE CIBP PLUG @ 4410 TYPE \_\_\_\_\_  
COMPLETION & TEST DATA BY PRODUCING FORMATION 406 TNKW CIBP Plug @ 4590 > earlier plugs

FORMATION	Tonkawa						
SPACING & SPACING ORDER NUMBER	none						
CLASS: Oil, Gas, Dry, Inj, Disp, Comm Disp, Svc	oil						
PERFORATED INTERVALS	3246-3312						
ACID/VOLUME	3000 gallon						
FRACTURE TREATMENT (Fluids/Prop Amounts)	800 bl/35,570 lb sand						

RECEIVED

NOV 29 2021

OKLAHOMA CORPORATION COMMISSION

Min Gas Allowable (165:10-17-7)

☐

OR

Oil Allowable (165:10-13-3)

Gas Purchaser/Measurer

First Sales Date

INITIAL TEST DATA

INITIAL TEST DATE	10/21/2020						
OIL-BBL/DAY	15						
OIL-GRAVITY (API)	40						
GAS-MCF/DAY	0						
GAS-OIL RATIO CU FT/BBL							
WATER-BBL/DAY	250						
PUMPING OR FLOWING	pumping						
INITIAL SHUT-IN PRESSURE							
CHOKE SIZE							
FLOW TUBING PRESSURE							

A record of the formations drilled through, and pertinent remarks are presented on the reverse. I declare that I have knowledge of the contents of this report and am authorized by my organization to make this report, which was prepared by me or under my supervision and direction, with the data and facts stated herein to be true, correct, and complete to the best of my knowledge and belief.

Mike Murphy

11/30/2020 (405) 463-3355

SIGNATURE

NAME (PRINT OR TYPE)

DATE

PHONE NUMBER

P O Box 21904

Oklahoma City

OK

73156

mike@mmenergy.net

ADDRESS

CITY

STATE

ZIP

EMAIL ADDRESS

Give formation names and tops, if available, or descriptions and thickness of formations drilled through. Show intervals cored or drillstem tested.

NAMES OF FORMATIONS	TOP

FOR COMMISSION USE ONLY	
ITD on file	<input type="checkbox"/> YES <input type="checkbox"/> NO
APPROVED	DISAPPROVED
2) Reject Codes	

Were open hole logs run?      X yes        no

Date Last log was run                  3/7/2012

Was CO<sub>2</sub> encountered?          yes    X no    at what depths? \_\_\_\_\_

Was H<sub>2</sub>S encountered?          yes    X no    at what depths? \_\_\_\_\_

Were unusual drilling circumstances encountered?      \_\_\_\_\_ yes    X no  
If yes, briefly explain below

Other remarks: OAC - Operator set a post cellar at 3480 used 150 sacks of cement lifting cement to 2300'

640 Acres

A blank 10x10 grid for graphing. The grid is composed of 10 columns and 10 rows of squares. The top-left square is shaded gray. The grid is used for plotting the graph of the function  $y = \frac{1}{2}x^2$  for  $x$  from -10 to 10.

If more than three drainholes are proposed, attach a separate sheet indicating the necessary information.

Direction must be stated in degrees azimuth.  
Please note, the horizontal drainhole and its end  
point must be located within the boundaries of the  
lease or spacing unit.

**Directional surveys are required for all drainholes and directional wells.**

840 Acres

[illegible]

**BOTTOM HOLE LOCATION FOR DIRECTIONAL HOLE**

SEC	TWP	RGE	COUNTY
Spot Location		Feet From 1/4 Sec Lines	FSL
1/4	1/4	1/4	1/4
Measured Total Depth	True Vertical Depth	BHL From Lease, Unit, or Property Line:	

BOTTOM HOLE LOCATION FOR HORIZONTAL HOLE: (LATERALS)

LATERAL #1

SEC	TWP	RGE	COUNTY
Spot Location			
1/4	1/4	1/4	1/4
Feet From 1/4 Sec Lines		FSL	FWL
Depth of Deviation	Radius of Turn	Direction	Total Length
Measured Total Depth		True Vertical Depth	
BHL From Lease, Unit, or Property Line:			

LATERAL #2

SEC	TWP	RGE	COUNTY
Spot Location			
1/4	1/4	1/4	1/4
Feet From 1/4 Sec Lines		FSL	FWL
Depth of Deviation	Radius of Turn	Direction	Total Length
Measured Total Depth	True Vertical Depth	BHL From Lease, Unit, or Property Line:	

LATERAL #3

SEC	TWP	RGE	COUNTY
Spot Location			
1/4	1/4	1/4	1/4
Feet From 1/4 Sec Lines	FSL	FWL	
Depth of Deviation	Radius of Turn	Direction	Total Length
Measured Total Depth	True Vertical Depth	BHL From Lease, Unit, or Property Line:	