

Oklahoma Corporation Commission
Oil & Gas Conservation Division
Post Office Box 52000
Oklahoma City, Oklahoma 73152-2000
Rule 165: 10-3-25

Form 1002A

API No.: 35045237460000

Completion Report

Spud Date: September 07, 2018

OTC Prod. Unit No.: 04522564400000

Drilling Finished Date: October 17, 2018

1st Prod Date: April 23, 2019

Completion Date: January 28, 2019

Drill Type: HORIZONTAL HOLE

Well Name: KNOWLES 25X36-19-26 1HA

Purchaser/Measurer: ENABLE

Location: ELLIS 24 19N 26W
SW SE SE SW
300 FSL 2180 FWL of 1/4 SEC
Latitude: 36.1014083 Longitude: -99.9273139
Derrick Elevation: 2527 Ground Elevation: 2511

First Sales Date: 4/23/19

Operator: FOURPOINT ENERGY LLC 23429

100 SAINT PAUL ST STE 400
DENVER, CO 80206-5140

Completion Type	
X	Single Zone
	Multiple Zone
	Commingled

Location Exception	
Order No	
703797	

Increased Density	
Order No	
679821	
679822	

Casing and Cement							
Type	Size	Weight	Grade	Feet	PSI	SAX	Top of CMT
SURFACE	13 3/8	54.5	J-55	883	800	1070	SURFACE
INTERMEDIATE	7	29	P-110	8690	500	398	6643
PRODUCTION	4 1/2	13.5	P-110	19478	2400	1193	11058

Liner								
Type	Size	Weight	Grade	Length	PSI	SAX	Top Depth	Bottom Depth
There are no Liner records to display.								

Total Depth: 19480

Packer	
Depth	Brand & Type
There are no Packer records to display.	

Plug	
Depth	Plug Type
There are no Plug records to display.	

Initial Test Data

Test Date	Formation	Oil BBL/Day	Oil-Gravity (API)	Gas MCF/Day	Gas-Oil Ratio Cu FT/BBL	Water BBL/Day	Pumpin or Flowing	Initial Shut-In Pressure	Choke Size	Flow Tubing Pressure
Jun 18, 2019	CLEVELAND	327	45	675	2064	708	PUMPING	1150	64/64	320

Completion and Test Data by Producing Formation

Formation Name: CLEVELAND		Code: 405CLVD	Class: GAS										
<div>Spacing Orders</div> <table> <tr> <th>Order No</th> <th>Unit Size</th> </tr> <tr> <td>100596</td> <td>640</td> </tr> <tr> <td>703796</td> <td>MULTI UNIT</td> </tr> </table>		Order No	Unit Size	100596	640	703796	MULTI UNIT	<div>Perforated Intervals</div> <table> <tr> <th>From</th> <th>To</th> </tr> <tr> <td>9690</td> <td>19425</td> </tr> </table>		From	To	9690	19425
Order No	Unit Size												
100596	640												
703796	MULTI UNIT												
From	To												
9690	19425												
<div>Acid Volumes</div> <table> <tr> <td>76000 GALS FE 15%</td> </tr> </table>		76000 GALS FE 15%	<div>Fracture Treatments</div> <table> <tr> <td>10187500 LBS 40/70 WHITE SAND & 1741250 LBS 40/70 CRC-C SAND & 229448 BBLs WATER</td> </tr> </table>		10187500 LBS 40/70 WHITE SAND & 1741250 LBS 40/70 CRC-C SAND & 229448 BBLs WATER								
76000 GALS FE 15%													
10187500 LBS 40/70 WHITE SAND & 1741250 LBS 40/70 CRC-C SAND & 229448 BBLs WATER													

Formation	Top
CLEVELAND	8937

Were open hole logs run? No

Date last log run:

Were unusual drilling circumstances encountered? No

Explanation:

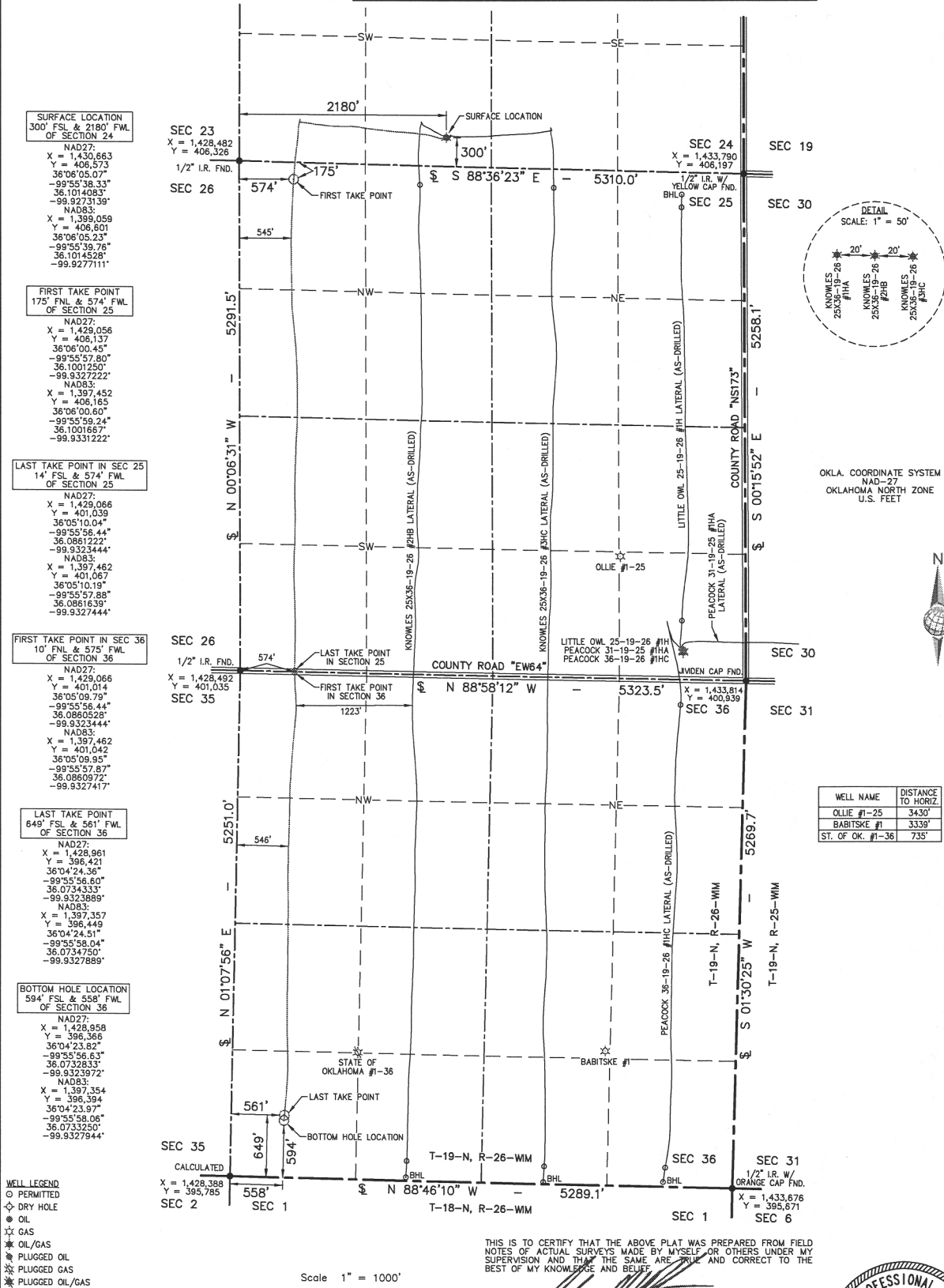
Other Remarks
There are no Other Remarks.

Lateral Holes
Sec: 36 TWP: 19N RGE: 26W County: ELLIS SE SW SW SW 594 FSL 558 FWL of 1/4 SEC Depth of Deviation: 8829 Radius of Turn: 590 Direction: 181 Total Length: 9725 Measured Total Depth: 19480 True Vertical Depth: 9249 End Pt. Location From Release, Unit or Property Line: 558

FOR COMMISSION USE ONLY
<div>Status: Accepted</div> <div>1142956</div>

"AS-DRILLED" WELL LOCATION PLAT

COMPANY FOURPOINT ENERGY, LLC LEASE KNOWLES 25X36-19-26 WELL NO. 1HA
 SECTION 24 TOWNSHIP 19-N RANGE 26-WIM LOCATION 300' FSL 2180' FWL
 COUNTY ELLIS STATE OKLAHOMA TOPOGRAPHY AND VEGETATION EXISTING PAD
 LATITUDE 36°06'05.07" LONGITUDE -99°55'38.33" NAD27 ELEVATION 2511' NGVD29 DATE STAKED 1/10/18
 DIRECTION FROM NEAREST TOWN APPROXIMATELY 9.0 MILES SOUTHWEST OF ARNETT, OKLAHOMA



WELL NAME	DISTANCE TO HORIZ.
OLLIE #1-25	3430'
BABITSKE #1	3339'
ST. OF OK. #1-36	735'

GDI
 Geospatial Data, Inc.
 LAND SURVEYING & GIS
 105 HACKBERRY TRAIL • CANADIAN, TX 79014
 (806) 323-9773 • TEXAS FIRM NO. 10010100
 CERT. OF AUTH. NO. 7796, EXP. JUNE 30, 2020

FOURPOINT
 ENERGY
 100 ST. PAUL STREET • SUITE 400 • DENVER, CO 80206

KNOWLES 25X36-19-26 #1HA
FIELD: N/A
DRAWN: MLS
DATE: 6/12/19
CHECKED: CBW
SHEET: 1 OF 1
REVISION:

REGISTERED PROFESSIONAL LAND SURVEYOR
 CURT McPHERSON
 1513
 OKLAHOMA
 JOB NO. C217-433-5