

Oklahoma Corporation Commission
Oil & Gas Conservation Division
Post Office Box 52000
Oklahoma City, Oklahoma 73152-2000
Rule 165: 10-3-25

Form 1002A

API No.: 35133252730002

Completion Report

Spud Date: March 22, 2018

OTC Prod. Unit No.:

Drilling Finished Date: March 29, 2018

1st Prod Date: August 01, 2018

Completion Date: July 02, 2018

Drill Type: STRAIGHT HOLE

Well Name: GATO CHIQUITO 1-36

Purchaser/Measurer:

Location: SEMINOLE 36 9N 6E
W2 NE SE SE
990 FSL 2173 FWL of 1/4 SEC
Derrick Elevation: 862 Ground Elevation: 852

First Sales Date: 08/01/2018

Operator: BLACKSTONE SEMINOLE LLC 24108

500 Dallas Street Suite 1650
HOUSTON, TX 77002-2931

Completion Type		Location Exception		Increased Density	
	Single Zone	Order No		Order No	
	Multiple Zone	There are no Location Exception records to display.		There are no Increased Density records to display.	
X	Commingled				

Casing and Cement							
Type	Size	Weight	Grade	Feet	PSI	SAX	Top of CMT
SURFACE	8 5/8	24	J-55	848		450	SURFACE
PRODUCTION	5 1/2	17	J-55	4361		285	2700

Liner								
Type	Size	Weight	Grade	Length	PSI	SAX	Top Depth	Bottom Depth
There are no Liner records to display.								

Total Depth: 4375

Packer		Plug	
Depth	Brand & Type	Depth	Plug Type
There are no Packer records to display.		4150	CIBP

Initial Test Data										
Test Date	Formation	Oil BBL/Day	Oil-Gravity (API)	Gas MCF/Day	Gas-Oil Ratio Cu FT/BBL	Water BBL/Day	Pumpin or Flowing	Initial Shut-In Pressure	Choke Size	Flow Tubing Pressure
Jul 05, 2018	HUNTON-BOOCH	18.75		194	10347	31	25	160	0.75	

Completion and Test Data by Producing Formation

Formation Name: WILCOX

Code: 202WLCX

Class: DRY

Spacing Orders

Order No	Unit Size
256718	20

Perforated Intervals

From	To
4161	4165

Acid Volumes

252 GALLONS 15% HCL

Fracture Treatments

There are no Fracture Treatments records to display.
--

Formation Name: HUNTON

Code: 269HNTN

Class: OIL

Spacing Orders

Order No	Unit Size
256718	20

Perforated Intervals

From	To
3995	4002

Acid Volumes

5,100 GALLONS 15% HCL

Fracture Treatments

3,500 POUNDS SAND, 240 BARRELS SLICKWATER

Formation Name: BOOCH

Code: 404BOCH

Class: OIL

Spacing Orders

Order No	Unit Size
256718	20

Perforated Intervals

From	To
3308	3326

Acid Volumes

2,184 GALLONS 10% HCL

Fracture Treatments

37,800 POUNDS SAND, 658 BARRELS SLICKWATER
--

Formation	Top
UPPER CALVIN	2110
SENORA	2584
EARLSBORO	2957
BOOCH	3300
CROMWELL	3712
MISENER-HUNTON	3985
1ST WILCOX	4164
2ND WILCOX	4225

Were open hole logs run? Yes

Date last log run: March 30, 2018

Were unusual drilling circumstances encountered? No

Explanation:

Other Remarks

OCC - 1002C SHOWS DV TOOL SET AT 3,351'

Status: Accepted

API
NO. 133-25273
OTC PROD.
UNIT NO. 133-224338-0-0000

(PLEASE TYPE OR USE BLACK INK ONLY)

OKLAHOMA CORPORATION COMMISSION

Oil & Gas Conservation Division

Post Office Box 52000

Oklahoma City, Oklahoma 73152-2000

Rule 165:10-3-25

RECEIVED
NOV 21 2019
OKLAHOMA CORPORATION
COMMISSION

Form 1002A
Rev. 2009

☒ ORIGINAL
☐ AMENDED (Reason)

COMPLETION REPORT

TYPE OF DRILLING OPERATION
☒ STRAIGHT HOLE ☐ DIRECTIONAL HOLE ☐ HORIZONTAL HOLE
☐ SERVICE WELL

If directional or horizontal, see reverse for bottom hole location.

COUNTY **Seminole** SEC **36** TWP **9N** RGE **6E**

LEASE NAME **Gato Chiquito** WELL NO. **1-36**

W2 1/4 NE 1/4 SE 1/4 SE 1/4 FSL OF 1/4 SEC **990** FWL OF 1/4 SEC **2173**

ELEVATION **10** Ground **853** Latitude (if known)

OPERATOR NAME **Blackstone Seminole LLC**

ADDRESS **600 Travis St Ste 300**

CITY **Houston** STATE **TX** ZIP **77002**

SPUD DATE **3/22/2018**

DRLG FINISHED DATE **3/29/2018**

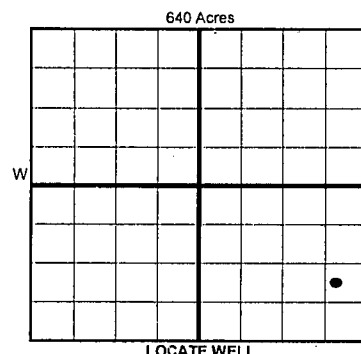
DATE OF WELL COMPLETION **7/2/2018**

1st PROD DATE **8/1/2018**

RECOMP DATE

Longitude (if known)

OTC/OCC OPERATOR NO. **24108**



COMPLETION TYPE

☐ SINGLE ZONE

☐ MULTIPLE ZONE

☒ COMMINGLED **-8/29/2018 wrong**

LOCATION EXCEPTION

ORDER NO

INCREASED DENSITY

ORDER NO

CASING & CEMENT (Form 1002C must be attached)

TYPE	SIZE	WEIGHT	GRADE	FEET	PSI	SAX	TOP OF CMT
CONDUCTOR							
SURFACE	8-5/8"	24#	J-55	858		450	surface
INTERMEDIATE							
PRODUCTION	5-1/2"	17#	J-55	4361		285	2700
LINER							
				TOTAL DEPTH	4375		

PACKER @ BRAND & TYPE

PLUG @ **4150** TYPE **CIBP**

PLUG @ TYPE

TOTAL DEPTH

PACKER @ BRAND & TYPE

PLUG @ TYPE

PLUG @ TYPE

COMPLETION & TEST DATA BY PRODUCING FORMATION **202 WILCOX 26A HUNTN 404 BOCH**

FORMATION	(1st) Wilcox	Hunton	Booch		
SPACING & SPACING ORDER NUMBER	256718 - (20)	20A - 256718	20A - 256718		
CLASS: Oil, Gas, Dry, Inj, Disp, Comm Disp, Svc	Dry	Oil/Gas FOR	Oil		
	4161 - 4165	3995 - 4002	3308 - 3316		
PERFORATED INTERVALS			3321 - 3326		
ACID/VOLUME	252 gal 15% HCL	5100 gal 15% HCL	2184 gal 10% HCL		
FRACTURE TREATMENT (Fluids/Prop Amounts)		3,500 lbs Sand	37,800 lbs, Sand		
		240 bbls slick water	658 bbls slick water		

Monitor
Report to
Fractures

Min Gas Allowable (165:10-17-7)

Gas Purchaser/Measurer

Oil Allowable (165:10-13-3)

First Sales Date

8/1/2018

INITIAL TEST DATA

INITIAL TEST DATE	7/5/2018				
OIL-BBL/DAY	18.75				
OIL-GRAVITY (API)					
GAS-MCF/DAY	194				
GAS-OIL RATIO CU FT/BBL	10,347				
WATER-BBL/DAY	31.25				
PUMPING OR FLOWING	25 psi				
INITIAL SHUT-IN PRESSURE	160 psi				
CHOKE SIZE	0.75				
FLOW TUBING PRESSURE	0				

A record of the formations drilled through, and pertinent remarks are presented on the reverse. I declare that I have knowledge of the contents of this report and am authorized by my organization to make this report, which was prepared by me or under my supervision and direction, with the data and facts stated herein to be true, correct, and complete to the best of my knowledge and belief.

Todd Brooks

8/29/2018

713-600-6220

SIGNATURE

NAME (PRINT OR TYPE)

DATE

PHONE NUMBER

600 Travis St Ste 300

Houston

TX

77002

regulatory@bogresources.com

ADDRESS

CITY

STATE

ZIP

EMAIL ADDRESS

PLEASE TYPE OR USE BLACK INK ONLY
FORMATION RECORD

Give formation names and tops, if available, or descriptions and thickness of formations drilled through. Show intervals cored or drillstem tested.

LEASE NAME Gato Chiquito

WELL NO. 1-36

NAMES OF FORMATIONS	TOP
Upper Calvin	2110
Senora	2584
Earlboro	2957
Booch	3300
Cromwell	3712
Misener-Hunton	3985
1st Wilcox	4164
2nd Wilcox	4225

FOR COMMISSION USE ONLY	
ITD on file <input type="checkbox"/> YES <input type="checkbox"/> NO	
APPROVED _____	DISAPPROVED _____
2) Reject Codes	

Were open hole logs run?	<input checked="" type="checkbox"/> yes <input type="checkbox"/> no
Date Last log was run	<u>3-30-2018</u>
Was CO ₂ encountered?	<input type="checkbox"/> yes <input checked="" type="checkbox"/> no at what depths? _____
Was H ₂ S encountered?	<input type="checkbox"/> yes <input checked="" type="checkbox"/> no at what depths? _____
Were unusual drilling circumstances encountered?	<input type="checkbox"/> yes <input checked="" type="checkbox"/> no
If yes, briefly explain below	

Other remarks:

OCC - 1002C shows DV tool set at 3351'

640 Acres

If more than three drainholes are proposed, attach a separate sheet indicating the necessary information.

Direction must be stated in degrees azimuth. Please note, the horizontal drainhole and its end point must be located within the boundaries of the lease or spacing unit.

Directional surveys are required for all drainholes and directional wells.

640 Acres

BOTTOM HOLE LOCATION FOR DIRECTIONAL HOLE

SEC	TWP	RGE	COUNTY
Spot Location			
1/4	1/4	1/4	1/4
Measured Total Depth		True Vertical Depth	BHL From Lease, Unit, or Property Line:

BOTTOM HOLE LOCATION FOR HORIZONTAL HOLE: (LATERALS)

LATERAL #1

SEC	TWP	RGE	COUNTY
Spot Location			
1/4	1/4	1/4	1/4
Depth of Deviation		Radius of Turn	Direction
Measured Total Depth		True Vertical Depth	BHL From Lease, Unit, or Property Line:

LATERAL #2

SEC	TWP	RGE	COUNTY
Spot Location			
1/4	1/4	1/4	1/4
Depth of Deviation		Radius of Turn	Direction
Measured Total Depth		True Vertical Depth	BHL From Lease, Unit, or Property Line:

LATERAL #3

SEC	TWP	RGE	COUNTY
Spot Location			
1/4	1/4	1/4	1/4
Depth of Deviation		Radius of Turn	Direction
Measured Total Depth		True Vertical Depth	BHL From Lease, Unit, or Property Line:

API NO. 051-24334
OTC PROD. UNIT NO. 051-224773

(PLEASE TYPE OR USE BLACK INK ONLY)

OKLAHOMA CORPORATION COMMISSION
Oil & Gas Conservation Division
Post Office Box 52000
Oklahoma City, Oklahoma 73152-2000
Rule 165:10-3-25

RECEIVED
AUG 01 2019
Oklahoma Corporation
Commission
640 Acres

Form 1002A
Rev. 2009

☒ ORIGINAL
☐ AMENDED (Reason) _____

COMPLETION REPORT

TYPE OF DRILLING OPERATION
☐ STRAIGHT HOLE ☐ DIRECTIONAL HOLE ☒ HORIZONTAL HOLE
☐ SERVICE WELL

If directional or horizontal, see reverse for bottom hole location.

COUNTY Grady SEC 6 TWP 7N RGE 5W
LEASE NAME Norma Jean WELL NO. #1H-6
NE 1/4 NE 1/4 NE 1/4 NE 1/4 ECL OF 1/4 SEC 2.424 ECL OF 1/4 SEC 2.613
ELEVATION Derrick FL 1325.8 Ground 1300.8 Latitude (if known) 35°06'59.77 Longitude (if known) 97°45'30.46
OPERATOR NAME Gaedeke Oil and Gas Operating LLC OTC / OCC OPERATOR NO. 22637
ADDRESS 3710 Rawlins St. Ste 1000
CITY Dallas STATE TX ZIP 75219-6409

SPUD DATE 4/25/2018
DRG FINISHED DATE 5/31/2018
DATE OF WELL COMPLETION 12/20/2018
1st PROD DATE 1/1/2019
RECOMP DATE
Longitudinal (if known) 97°45'30.46

LOCATE WELL

COMPLETION TYPE
☒ SINGLE ZONE
☐ MULTIPLE ZONE
☐ COMMINGLED
LOCATION EXCEPTION ORDER NO.
INCREASED DENSITY ORDER NO.

TYPE	SIZE	WEIGHT	GRADE	FEET	PSI	SAX	TOP OF CMT
CONDUCTOR	20	48		90			
SURFACE	9.625	40	P-110	1255	3470	625	Surface
INTERMEDIATE	7	29	P-110	10,988		1015	554
PRODUCTION	4.5	13.5	P-110	6,434		450	9,027
LINER				10441-16575			
						TOTAL DEPTH	16,575

PACKER @ _____ BRAND & TYPE _____ PLUG @ _____ TYPE _____ PLUG @ _____ TYPE _____
PACKER @ _____ BRAND & TYPE _____ PLUG @ _____ TYPE _____ PLUG @ _____ TYPE _____

COMPLETION & TEST DATA BY PRODUCING FORMATION

FORMATION	Woodford						
SPACING & SPACING ORDER NUMBER	663980 (640)						
CLASS: Oil, Gas, Dry, Inj, Disp, Comm Disp, Svc	Oil						
	28	Stages					
PERFORATED INTERVALS	16,525'	TOP PERF					
	11,787'	BOTTOM PERF					
ACID/VOLUME	26,500	15% HCL					
FRACTURE TREATMENT (Fluids/Prop Amounts)	11,455,767 gal	Slickwater					
	10,795,999 lb	100 Mesh sand					
		40/70 sand					

Monitor Report
to Frac Focus

☒ Min Gas Allowable (165:10-17-7)
OR
☐ Oil Allowable (165:10-13-3)

Gas Purchaser/Measurer
First Sales Date

Enable
1/9/2019

INITIAL TEST DATA

INITIAL TEST DATE	1/14/2019					
OIL-BBL/DAY	347					
OIL-GRAVITY (API)	44.5					
GAS-MCF/DAY	1034					
GAS-OIL RATIO CU FT/BBL	4729					
WATER-BBL/DAY	1641					
PUMPING OR FLOWING	Flowing					
INITIAL SHUT-IN PRESSURE	1725					
CHOKE SIZE	38/64					
FLOW TUBING PRESSURE	600 PSI	(Flowing up casing)				

A record of the formations drilled through, and pertinent remarks are presented on the reverse. I declare that I have knowledge of the contents of this report and am authorized by my organization to make this report, which was prepared by me or under my supervision and direction, with the data and facts stated herein to be true, correct, and complete to the best of my knowledge and belief.

SIGNATURE

NAME (PRINT OR TYPE)

DATE

PHONE NUMBER

7-26-19

FORMATION RECORD

LEASE NAME

WELL NO.

NAMES OF FORMATIONS	TOP
Woodford	11,582' TVD

FOR COMMISSION USE ONLY	
ITD on file	<input type="checkbox"/> YES <input type="checkbox"/> NO
APPROVED	DISAPPROVED
2) Reject Codes <hr/> <hr/> <hr/> <hr/> <hr/>	

Were open hole logs run? yes X no

Date Last log was run _____

Was CO₂ encountered? yes X no at what depths? _____

Was H₂S encountered? yes X no at what depths? _____

Were unusual drilling circumstances encountered? yes X no

If yes, briefly explain below

Other remarks:

640 Acres

A 10x10 grid representing 640 acres. The grid is divided into four 5x5 quadrants by a thick vertical line and a thick horizontal line. A north arrow is located in the bottom right corner of the grid.

If more than three drainholes are proposed, attach a separate sheet indicating the necessary information.

Direction must be stated in degrees azimuth.
Please note, the horizontal drainhole and its end
point must be located within the boundaries of the
lease or spacing unit.

Directional surveys are required for all drainholes and directional wells.

BOTTOM HOLE LOCATION FOR DIRECTIONAL HOLE

SEC	TWP	RGE	COUNTY			
Spot Location			Feet From 1/4 Sec Lines		FSL	FWL
1/4	1/4	1/4	1/4			
Measured Total Depth		True Vertical Depth		BHL From Lease, Unit, or Property Line:		

BOTTOM HOLE LOCATION FOR HORIZONTAL HOLE: (LATERALS)

LATERAL #1

SEC 6	TWP 7N	RGE 5W	COUNTY	Grady	FEL 399
Spot Location			SE 1/4	SE 1/4	SE 1/4
SE 5W4			SE 1/4	SE 1/4	SE 1/4
Feet From 1/4 Sec Lines		FSL 72	4,881'		
Depth of Deviation		11,145'	Radius of Turn		457'
Direction		183 184	Total Length		5,430'
Measured Total Depth		16,575'	True Vertical Depth		11,778'
BHL From Lease, Unit, or Property Line:					
72' FSL & 399' FEL					

LATERAL #2

SEC	TWP	RGE	COUNTY				
Spot Location				Feet From 1/4 Sec Lines	FSL		FWL
1/4	1/4	1/4	1/4				
Depth of Deviation		Radius of Turn	Direction	Total Length			
Measured Total Depth		True Vertical Depth	BHL From Lease, Unit, or Property Line:				

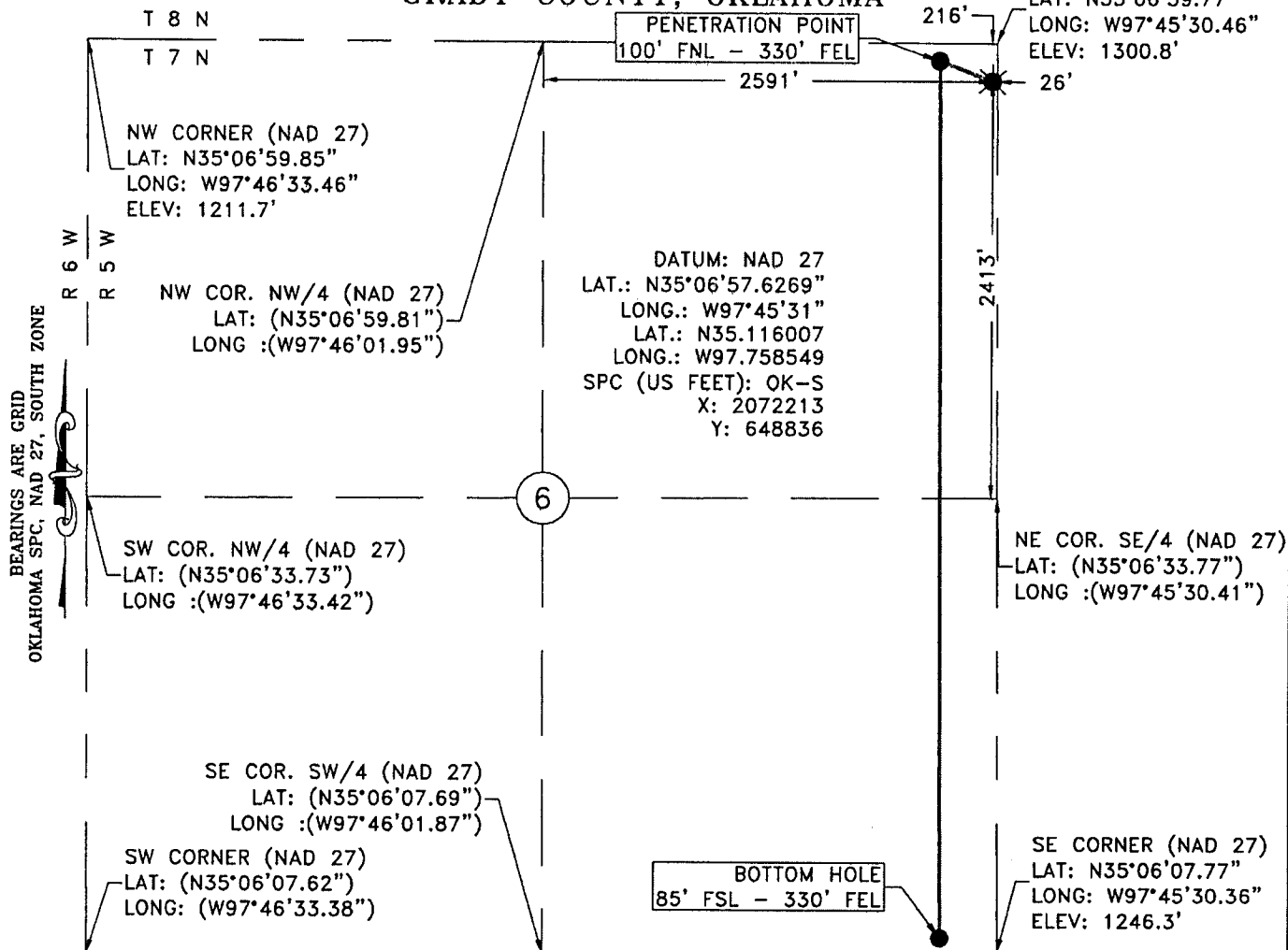
LATERAL #3

SEC	TWP	RGE	COUNTY				
Spot Location			Feet From 1/4 Sec Lines	FSL		FWL	
1/4	1/4	1/4	1/4				
Depth of Deviation		Radius of Turn	Direction	Total Length			
Measured Total Depth		True Vertical Depth	BHL From Lease, Unit, or Property Line:				

Image @ 1002A

3505124334

SECTION 6, T 07 N - R 05 W, I.M.,
GRADY COUNTY, OKLAHOMA



Operator: GAEDEKE OIL & GAS OPERATING, LLC

Date Staked: 3/18/2018

Lease Name: NORMA JEAN

Well No.: #1H-6

Elevation: 1303.3'

Topography and Vegetation: PASTURE


Good Drill Site? YES

Reference or Alt. Location Stakes Set: NONE

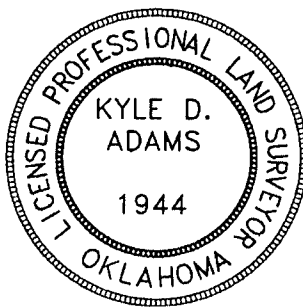
Best Accessibility to Location: FROM LEASE ROAD

Distance and Direction from Hwy. Jct. or town: FROM THE JUNCTION OF SH-76 AND US-62 IN BLANCHARD, OKLAHOMA, HEAD SOUTHWEST 2.2 MILES ON US-62, THEN NORTH 0.2 MILE ON CO. RD. N2970, THEN WEST 1.1 MILES ON OLD HIGHWAY 62, THEN WEST 1.0 MILE ON CO. RD. E1310, THEN WESTERNLY 1.9 MILES ON LEASE ROAD. LOCATION IS ON NORTH SIDE OF LEASE ROAD

LEGEND
SURFACE LOCATION
EXISTING WELL * BOTTOM HOLE/PENETRATION POINT
PROPOSED DRILL PATH
EXISTING PIPELINE - - - - -
ELECTRIC LINE - - - - -
OVERHEAD POWER - - - - -
FENCE - - - - -


KYLE D. ADAMS
OKLAHOMA P.L.S. NO.: 1944

4/17/18
DATE




Gateway Services Group, LLC
PO. BOX 960
MEEKER, OK 74855
OFF. (405) 273-0954
FAX (405) 273-0580
C.A. NO. 4091 (LS)
EXP. DATE 6-30-2018

EXHIBIT "A" PRELIMINARY
GAEDEKE OIL AND GAS OPERATING, LLC
NORMA JEAN #1H-6
216'FNL - 26'FEL
SECTION 6, T 07 N - R 05 W, I.M.,
GRADY COUNTY, OKLAHOMA

DRAWN BY: MRC	DATE: 3/19/18	CHK'D: CWP
GATEWAY NO.: 18-0228-001R1	SCALE: 1"=1000'	
PAD#:	WELL#:	
REV.	DWN.	DESCRIPTION
1	CLC	NAME CORRECTION
		DATE
		04/16/18

NOTE:
This is a plat of a proposed well location and does not represent a true boundary survey. The information shown hereon shall not be relied upon for the location or establishment of land boundary lines. All of the positions shown hereon have not been verified as being actual Section, Quarter or Property corners. Positions shown in (Parentheses) are based upon local occupation and improvements or calculated per proportional measurement and/or G.L.O. record distances. Review this plat and notify Gateway Services Group, LLC immediately of any possible discrepancy.