

Oklahoma Corporation Commission
Oil & Gas Conservation Division
Post Office Box 52000
Oklahoma City, Oklahoma 73152-2000
Rule 165: 10-3-25

Form 1002A

API No.: 35069201890001

Completion Report

Spud Date: December 26, 2018

OTC Prod. Unit No.:

Drilling Finished Date: February 19, 2019

1st Prod Date:

Amended

Completion Date: August 09, 2019

Amend Reason: CORRECT BOTTOM HOLE LOCATION, ADD FORMATION NAME / DEPTH

Drill Type: HORIZONTAL HOLE

Well Name: KELLY 2-28H21X

Purchaser/Measurer:

Location: JOHNSTON 28 4S 5E
SW SW SE SE
53 FSL 1132 FEL of 1/4 SEC
Latitude: 34.172613 Longitude: -96.779396
Derrick Elevation: 831 Ground Elevation: 808

First Sales Date:

Operator: XTO ENERGY INC 21003

22777 SPRINGWOODS VILLAGE PKWY
SPRING, TX 77389-1425

Completion Type		Location Exception		Increased Density	
X	Single Zone	Order No		Order No	
	Multiple Zone	684707		683810	
	Commingled			683811	

Casing and Cement							
Type	Size	Weight	Grade	Feet	PSI	SAX	Top of CMT
CONDUCTOR	20	169	J-55	103			SURFACE
SURFACE	13 3/8	54.5	J-55	2015		855	SURFACE
PRODUCTION	5 1/2	20, 23	P-110	18780		1810	3446

Liner								
Type	Size	Weight	Grade	Length	PSI	SAX	Top Depth	Bottom Depth
There are no Liner records to display.								

Total Depth: 18780

Packer		Plug	
Depth	Brand & Type	Depth	Plug Type
7830	BAKER HORNET	There are no Plug records to display.	

Initial Test Data

Test Date	Formation	Oil BBL/Day	Oil-Gravity (API)	Gas MCF/Day	Gas-Oil Ratio Cu FT/BBL	Water BBL/Day	Pumpin or Flowing	Initial Shut-In Pressure	Choke Size	Flow Tubing Pressure
-----------	-----------	-------------	-------------------	-------------	-------------------------	---------------	-------------------	--------------------------	------------	----------------------

There are no Initial Data records to display.

Completion and Test Data by Producing Formation

Formation Name: WOODFORD Code: 319WDFD Class: TA

Spacing Orders		Perforated Intervals	
Order No	Unit Size	From	To
557092	640	8265	18648
583116	640		
686172	MULTIUNIT		
Acid Volumes		Fracture Treatments	
N/A		503,113 BTW, 1,377,700 POUNDS 100 MESH, 10,958,068 POUNDS 40/70, 3,052,780 POUNDS CRC	

Formation	Top
WOODFORD	8212

Were open hole logs run? No
Date last log run:

Were unusual drilling circumstances encountered? No
Explanation:

Other Remarks
IRREGULAR SECTION. WAITING ON OFFSET WELLS TO BE COMPLETED BEFORE WE PRODUCE.

Lateral Holes
Sec: 21 TWP: 4S RGE: 5E County: JOHNSTON NW NE NW NE 74 FNL 1843 FEL of 1/4 SEC Depth of Deviation: 7641 Radius of Turn: 586 Direction: 356 Total Length: 10471 Measured Total Depth: 18780 True Vertical Depth: 6078 End Pt. Location From Release, Unit or Property Line: 74

FOR COMMISSION USE ONLY
<div>Status: Accepted</div> <div>1144485</div>

Give formation names and tops, if available, or descriptions and thickness of formations drilled through. Show intervals cored or drillstem tested.

NAMES OF FORMATIONS	TOP
Woodford	8,212

FOR COMMISSION USE ONLY

ITD on file ☐ YES ☐ NO

APPROVED _____ DISAPPROVED _____

2) Reject Codes _____

Were open hole logs run? _____ yes ☒ no

Date Last log was run _____

Was CO₂ encountered? _____ yes ☒ no at what depths? _____

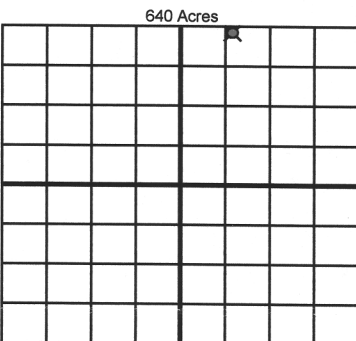
Was H₂S encountered? _____ yes ☒ no at what depths? _____

Were unusual drilling circumstances encountered? _____ yes ☒ no

If yes, briefly explain below _____

Per Debbie on original 1002A

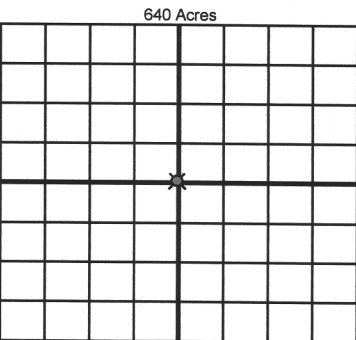
Other remarks:	Irregular Section
Waiting on offset wells to be completed before we produce.	



If more than three drainholes are proposed, attach a separate sheet indicating the necessary information.

Direction must be stated in degrees azimuth.
Please note, the horizontal drainhole and its end point must be located within the boundaries of the lease or spacing unit.

Directional surveys are required for all drainholes and directional wells.



SEC	TWP	RGE	COUNTY			
Spot Location			Feet From 1/4 Sec Lines		FSL	FWL
1/4	1/4	1/4	1/4			
Measured Total Depth		True Vertical Depth		BHL From Lease, Unit, or Property Line:		

LATERAL #1									
SEC 21	TWP 4S	RGE 5E	COUNTY Johnston						
Spot Location			NW 1/4 NE 1/4 NW 1/4 NE 1/4				Feet From 1/4 Sec Lines		
NW 1/4 NE 1/4			NW 1/4 NE 1/4				FNL 74 FEL 1843		
Depth of Deviation 7,641			Radius of Turn 586				Direction 356		Total Length 10,471
Measured Total Depth 18,780			True Vertical Depth 6,078				BHL From Lease, Unit, or Property Line: 74 FNL & 1843 FEL		

SEC	TWP	RGE	COUNTY				
Spot Location				Feet From 1/4 Sec Lines	FSL		FWL
1/4	1/4	1/4	1/4				
Depth of Deviation		Radius of Turn	Direction	Total Length			
Measured Total Depth		True Vertical Depth	BHL From Lease, Unit, or Property Line:				

SEC	TWP	RGE	COUNTY				
Spot Location				Feet From 1/4 Sec Lines	FSL		FWL
1/4	1/4	1/4	1/4				
Depth of Deviation		Radius of Turn		Direction	Total Length		
Measured Total Depth		True Vertical Depth		BHL From Lease, Unit, or Property Line:			