

Oklahoma Corporation Commission
Oil & Gas Conservation Division
Post Office Box 52000
Oklahoma City, Oklahoma 73152-2000
Rule 165: 10-3-25

Form 1002A

API No.: 35039225790000

Completion Report

Spud Date: July 22, 2019

OTC Prod. Unit No.:

Drilling Finished Date: August 15, 2019

1st Prod Date: October 03, 2019

Completion Date: August 26, 2019

Drill Type: HORIZONTAL HOLE

Well Name: PUTNAM OSWEGO UNIT 1-3H

Purchaser/Measurer: ENABLE

Location: CUSTER 3 15N 15W
NW NW NW NW
186 FNL 218 FWL of 1/4 SEC
Latitude: 35.8118734 Longitude: -98.7906771
Derrick Elevation: 1790 Ground Elevation: 1770

First Sales Date:

Operator: BLAKE PRODUCTION COMPANY INC 18119

1601 NW EXPRESSWAY STE 777
OKLAHOMA CITY, OK 73118-1446

Completion Type	
X	Single Zone
	Multiple Zone
	Commingle

Location Exception	
Order No	
There are no Location Exception records to display.	

Increased Density	
Order No	
There are no Increased Density records to display.	

Casing and Cement							
Type	Size	Weight	Grade	Feet	PSI	SAX	Top of CMT
CONDUCTOR	20			80			SURFACE
SURFACE	9 5/8	36	J-55	527		160	SURFACE
INTERMEDIATE	7	26	P-110	9822		375	4186
PRODUCTION	4 1/2	13.5	P-110	15090		585	6795

Liner								
Type	Size	Weight	Grade	Length	PSI	SAX	Top Depth	Bottom Depth
There are no Liner records to display.								

Total Depth: 15122

Packer	
Depth	Brand & Type
There are no Packer records to display.	

Plug	
Depth	Plug Type
There are no Plug records to display.	

Initial Test Data

Test Date	Formation	Oil BBL/Day	Oil-Gravity (API)	Gas MCF/Day	Gas-Oil Ratio Cu FT/BBL	Water BBL/Day	Pumpin or Flowing	Initial Shut-In Pressure	Choke Size	Flow Tubing Pressure
Jan 09, 2020	OSWEGO	10.2	42			86	PUMPING		OPEN	200

Completion and Test Data by Producing Formation

Formation Name: OSWEGO

Code: 404OSWG

Class: OIL

Spacing Orders

Order No	Unit Size
70029	UNIT

Perforated Intervals

From	To
9925	15045

Acid Volumes

2,886 BARRELS 7.5% HCL

Fracture Treatments

677,110 POUNDS 100 MESH SAND, 107,448 BARRELS WATER

Formation	Top
LOWER TONKAWA	7874
COTTAGE GROVE	8325
HOGSHOOTER	8678
CHECKERBOARD	8956
CLEVELAND	9021
BIG LIME	9490
OSWEGO	9542

Were open hole logs run? No

Date last log run:

Were unusual drilling circumstances encountered? No

Explanation:

Other Remarks

There are no Other Remarks.

Lateral Holes

Sec: 33 TWP: 16N RGE: 15W County: DEWEY

NW NE NW NE

2577 FSL 822 FWL of 1/4 SEC

Depth of Deviation: 9103 Radius of Turn: 583 Direction: 344 Total Length: 5103

Measured Total Depth: 15122 True Vertical Depth: 9485 End Pt. Location From Release, Unit or Property Line: 822

FOR COMMISSION USE ONLY

1144494

Status: Accepted

PLEASE TYPE OR USE BLACK INK ONLY
FORMATION RECORD

Give formation names and tops, if available, or descriptions and thickness of formations drilled through. Show intervals cored or drillstem tested.

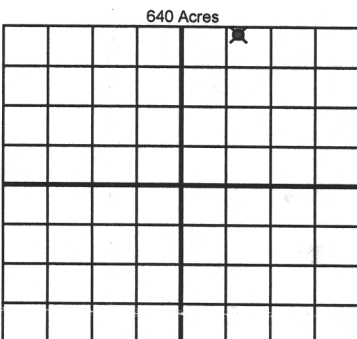
NAMES OF FORMATIONS	TOP
Lower Tonkawa	7,874
Cottage Grove	8,325
Hogshooter	8678
Checkerboard	8,956
Cleveland	9,021
Big Lime	9,490
Oswego	9,542

LEASE NAME Putnam Oswego Unit WELL NO. 1-3H

FOR COMMISSION USE ONLY	
ITD on file <input type="checkbox"/> YES <input type="checkbox"/> NO	
APPROVED _____	DISAPPROVED _____
2) Reject Codes	

Were open hole logs run?	_____ yes <input checked="" type="checkbox"/> no
Date Last log was run	_____
Was CO ₂ encountered?	_____ yes <input checked="" type="checkbox"/> no at what depths? _____
Was H ₂ S encountered?	_____ yes <input checked="" type="checkbox"/> no at what depths? _____
Were unusual drilling circumstances encountered?	_____ yes <input checked="" type="checkbox"/> no
If yes, briefly explain below	

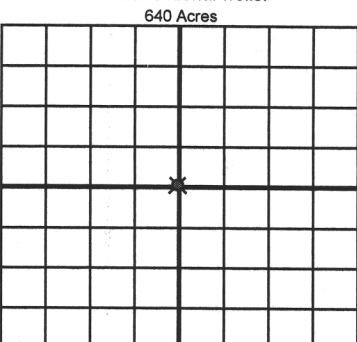
Other remarks:



If more than three drainholes are proposed, attach a separate sheet indicating the necessary information.

Direction must be stated in degrees azimuth.
Please note, the horizontal drainhole and its end point must be located within the boundaries of the lease or spacing unit.

Directional surveys are required for all drainholes and directional wells.



BOTTOM HOLE LOCATION FOR DIRECTIONAL HOLE

SEC	TWP	RGE	COUNTY
Spot Location			
1/4	1/4	1/4	1/4
Measured Total Depth		True Vertical Depth	BHL From Lease, Unit, or Property Line:

BOTTOM HOLE LOCATION FOR HORIZONTAL HOLE: (LATERALS)

LATERAL #1			
SEC	TWP	RGE	COUNTY
33	16N	15W	Dewey
Spot Location			
NW 1/4	NE 1/4	NW 1/4	NE 1/4
Depth of Deviation		Radius of Turn	Direction
9,103		583	344 340
Measured Total Depth		True Vertical Depth	Total Length
15,122		9,485	5,103
			BHL From Lease, Unit, or Property Line:
			822

LATERAL #2			
SEC	TWP	RGE	COUNTY
Spot Location			
1/4	1/4	1/4	1/4
Depth of Deviation		Radius of Turn	Direction
Measured Total Depth		True Vertical Depth	Total Length
			BHL From Lease, Unit, or Property Line:

LATERAL #3			
SEC	TWP	RGE	COUNTY
Spot Location			
1/4	1/4	1/4	1/4
Depth of Deviation		Radius of Turn	Direction
Measured Total Depth		True Vertical Depth	Total Length
			BHL From Lease, Unit, or Property Line: