

Oklahoma Corporation Commission
Oil & Gas Conservation Division
Post Office Box 52000
Oklahoma City, Oklahoma 73152-2000
Rule 165: 10-3-25

Form 1002A

API No.: 35047243710001

Completion Report

Spud Date: September 10, 2004

OTC Prod. Unit No.: 047-114889-0-0000

Drilling Finished Date: September 21, 2004

Amended

1st Prod Date: October 20, 2004

Amend Reason: RECOMPLETION

Completion Date: September 28, 2004

Recomplete Date: October 04, 2019

Drill Type: STRAIGHT HOLE

Well Name: LAURA CREWS NORTH 35

Purchaser/Measurer:

Location: GARFIELD 19 22N 3W
N2 NW SW SW
1200 FSL 330 FWL of 1/4 SEC
Derrick Elevation: 0 Ground Elevation: 1080

First Sales Date:

Operator: M M ENERGY INC 19118
PO BOX 21904
13927 QUAIL POINTE DR
OKLAHOMA CITY, OK 73156-1904

Completion Type		Location Exception		Increased Density	
X	Single Zone	Order No		Order No	
	Multiple Zone	501184		There are no Increased Density records to display.	
	Commingled				

Casing and Cement							
Type	Size	Weight	Grade	Feet	PSI	SAX	Top of CMT
SURFACE	9 5/8		J	292		160	SURFACE
PRODUCTION	7	26	J	4443		175	2022

Liner								
Type	Size	Weight	Grade	Length	PSI	SAX	Top Depth	Bottom Depth
There are no Liner records to display.								

Total Depth: 4440

Packer	
Depth	Brand & Type
2330	BAKER COMPRESSION
2470	BAKER COMPRESSION

Plug	
Depth	Plug Type
There are no Plug records to display.	

Initial Test Data

Test Date	Formation	Oil BBL/Day	Oil-Gravity (API)	Gas MCF/Day	Gas-Oil Ratio Cu FT/BBL	Water BBL/Day	Pumpin or Flowing	Initial Shut-In Pressure	Choke Size	Flow Tubing Pressure
Oct 11, 2019	OSWEGO	15	40			50	PUMPING	450		

Completion and Test Data by Producing Formation

Formation Name: OSWEGO

Code: 404OSWG

Class: OIL

Spacing Orders

Order No	Unit Size
501087	40

Perforated Intervals

From	To
4304	4358

Acid Volumes

2,000 GALLONS

Fracture Treatments

NONE

Formation	Top
OSWEGO	4304

Were open hole logs run? No

Date last log run: September 20, 2004

Were unusual drilling circumstances encountered? No

Explanation:

Other Remarks

ISOLATED HOVER PERFORATIONS 2,392' TO 2,460' WITH PACKERS AND 2 JTS 5 1/2 CASING

FOR COMMISSION USE ONLY

1144465

Status: Accepted

RECEIVED

DEC 20 2019

Form 1002A
Rev. 2009

API NO. 047-24371 (PLEASE TYPE OR USE BLACK INK ONLY)
 OTC PROD. UNIT NO. 047-114889-0-0000

OKLAHOMA CORPORATION COMMISSION
 Oil & Gas Conservation Division
 Post Office Box 52000
 Oklahoma City, Oklahoma 73152-2000
 Rule 165:10-3-25

OKLAHOMA CORPORATION
COMMISSION

☐ ORIGINAL
☒ AMENDED (Reason) re-completion

COMPLETION REPORT

TYPE OF DRILLING OPERATION

☒ STRAIGHT HOLE ☐ DIRECTIONAL HOLE ☐ HORIZONTAL HOLE
☐ SERVICE WELL

If directional or horizontal, see reverse for bottom hole location.

COUNTY	Garfield	SEC	19	TWP	22n	RGE	3w
LEASE NAME	Laura Crews North			WELL NO.	35		
N 2 1/4 NW 1/4 SW 1/4 SW 1/4	FSL OF 1/4 SEC	1200	FWL OF 1/4 SEC	330	DATE OF WELL COMPLETION		
ELEVATION	Ground	1080	Latitude (if known)	Longitude (if known)			
OPERATOR NAME	MM Energy			OTC / OCC OPERATOR NO.	19118		
ADDRESS	P O Box 21904						
CITY	Oklahoma City	STATE			ZIP	73156	

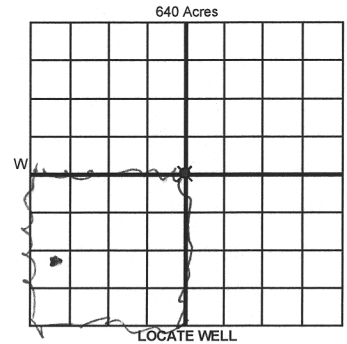
SPUD DATE 9/10/2004

DRLG FINISHED DATE 9/21/2004

DATE OF WELL COMPLETION 9/28/2004

1st PROD DATE 10/20/2004

RECOMP DATE 10/4/2019



COMPLETION TYPE

<input checked="" type="checkbox"/> SINGLE ZONE	
<input type="checkbox"/> MULTIPLE ZONE	
Application Date	
<input type="checkbox"/> COMMINGLED	
Application Date	
LOCATION EXCEPTION ORDER NO.	501184
INCREASED DENSITY ORDER NO.	

CASING & CEMENT (Attach Form 1002C)

TYPE	SIZE	WEIGHT	GRADE	FEET	PSI	SAX	TOP OF CMT
CONDUCTOR							
SURFACE	9 5/8		J	292		160	surface
INTERMEDIATE							
PRODUCTION	7	26 lb	J	4443		175	2022
LINER							

PACKER @ 2,330 BRAND & TYPE Baker compression PLUG @ TYPE PLUG @ TYPE
 PACKER @ 2470 BRAND & TYPE Baker compression PLUG @ TYPE PLUG @ TYPE

TOTAL DEPTH 4,440

COMPLETION & TEST DATA BY PRODUCING FORMATION

FORMATION	Oswego					No Frac
SPACING & SPACING ORDER NUMBER	none 501087 (40)					
CLASS: Oil, Gas, Dry, Inj, Disp, Comm Disp, Svc	Oil					
PERFORATED INTERVALS	4304-4358					
ACID/VOLUME	2000 gallon					
FRACTURE TREATMENT (Fluids/Prop Amounts)	none					

☐ Min Gas Allowable (165:10-17-7)
 OR
☐ Oil Allowable (165:10-13-3)

Gas Purchaser/Measurer
 First Sales Date

INITIAL TEST DATA

INITIAL TEST DATE	10/11/2019					
OIL-BBL/DAY	15					
OIL-GRAVITY (API)	40					
GAS-MCF/DAY	0					
GAS-OIL RATIO CU FT/BBL						
WATER-BBL/DAY	50					
PUMPING OR FLOWING	pumping					
INITIAL SHUT-IN PRESSURE	450 lb					
CHOKE SIZE						
FLOW TUBING PRESSURE						

AS SUBMITTED

A record of the formations drilled through, and pertinent remarks are presented on the reverse. I declare that I have knowledge of the contents of this report and am authorized by my organization to make this report, which was prepared by me or under my supervision and direction, with the data and facts stated herein to be true, correct, and complete to the best of my knowledge and belief.

SIGNATURE mike murphy NAME (PRINT OR TYPE) mike murphy DATE 12/11/2019 PHONE NUMBER 405 463 3355
 ADDRESS P O Box 2104 CITY oklahoma City STATE OK ZIP 73156 EMAIL ADDRESS mike@mmenergy.net

PLEASE TYPE OR USE BLACK INK ONLY
FORMATION RECORD

Give formation names and tops, if available, or descriptions and thickness of formations drilled through. Show intervals cored or drillstem tested.

LEASE NAME Laura Crews North WELL NO. 35

NAMES OF FORMATIONS	TOP
Oswego	4,304

FOR COMMISSION USE ONLY

ITD on file ☐ YES ☐ NO

APPROVED _____ DISAPPROVED _____

2) Reject Codes

Were open hole logs run? ____ yes X no

Date Last log was run 9/20/2004

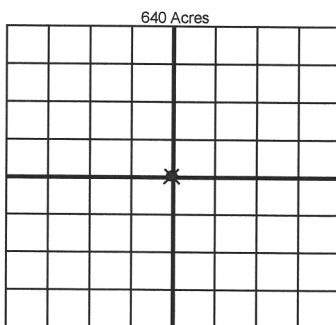
Was CO₂ encountered? ____ yes X no at what depths? _____

Was H₂S encountered? ____ yes X no at what depths? _____

Were unusual drilling circumstances encountered? ____ yes X no

If yes, briefly explain below

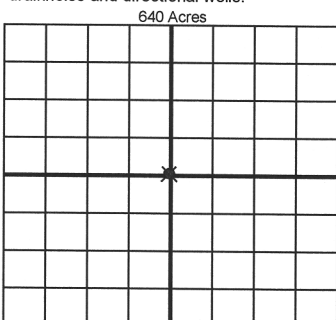
Other remarks: Isolated Hoover Perforations 2392 to 2460 with Packers and 2 jts 5 1/2 casing



If more than three drainholes are proposed, attach a separate sheet indicating the necessary information.

Direction must be stated in degrees azimuth. Please note, the horizontal drainhole and its end point must be located within the boundaries of the lease or spacing unit.

Directional surveys are required for all drainholes and directional wells.



BOTTOM HOLE LOCATION FOR DIRECTIONAL HOLE

SEC	TWP	RGE	COUNTY
Spot Location		Feet From 1/4 Sec Lines	
1/4	1/4	1/4	1/4
Measured Total Depth		True Vertical Depth	
BHL From Lease, Unit, or Property Line:			

BOTTOM HOLE LOCATION FOR HORIZONTAL HOLE: (LATERALS)

LATERAL #1

SEC	TWP	RGE	COUNTY
Spot Location		Feet From 1/4 Sec Lines	
1/4	1/4	1/4	1/4
Depth of Deviation		Radius of Turn	
Measured Total Depth		True Vertical Depth	
Direction		Total Length	
BHL From Lease, Unit, or Property Line:			

LATERAL #2

SEC	TWP	RGE	COUNTY
Spot Location		Feet From 1/4 Sec Lines	
1/4	1/4	1/4	1/4
Depth of Deviation		Radius of Turn	
Measured Total Depth		True Vertical Depth	
Direction		Total Length	
BHL From Lease, Unit, or Property Line:			

LATERAL #3

SEC	TWP	RGE	COUNTY
Spot Location		Feet From 1/4 Sec Lines	
1/4	1/4	1/4	1/4
Depth of Deviation		Radius of Turn	
Measured Total Depth		True Vertical Depth	
Direction		Total Length	
BHL From Lease, Unit, or Property Line:			