

Oklahoma Corporation Commission
Oil & Gas Conservation Division
Post Office Box 52000
Oklahoma City, Oklahoma 73152-2000
Rule 165: 10-3-25

Form 1002A

API No.: 35019254910001

Completion Report

Spud Date: March 10, 2011

OTC Prod. Unit No.:

Drilling Finished Date: March 12, 2011

Amended

1st Prod Date: April 13, 2011

Amend Reason: CONVERT TO INJECTION

Completion Date: April 12, 2011

Recomplete Date: October 18, 2019

Drill Type: STRAIGHT HOLE

SERVICE WELL

Well Name: BRADY 88

Purchaser/Measurer:

Location: CARTER 5 2S 2W
SE NW SW NE
885 FSL 495 FWL of 1/4 SEC
Derrick Elevation: 1082 Ground Elevation: 1075

First Sales Date:

Operator: KODIAK OIL & GAS INC 23226

204 N WALNUT ST
MUNSTER, TX 76252-2766

Completion Type		Location Exception		Increased Density	
X	Single Zone	Order No		Order No	
	Multiple Zone	There are no Location Exception records to display.		There are no Increased Density records to display.	
	Commingle				

Casing and Cement							
Type	Size	Weight	Grade	Feet	PSI	SAX	Top of CMT
PRODUCTION	5 1/2	15.5	J	2000		400	SURFACE

Liner								
Type	Size	Weight	Grade	Length	PSI	SAX	Top Depth	Bottom Depth
There are no Liner records to display.								

Total Depth: 2000

Packer		Plug	
Depth	Brand & Type	Depth	Plug Type
1580	ARROW TENSION	There are no Plug records to display.	

Initial Test Data										
Test Date	Formation	Oil BBL/Day	Oil-Gravity (API)	Gas MCF/Day	Gas-Oil Ratio Cu FT/BBL	Water BBL/Day	Pumpin or Flowing	Initial Shut-In Pressure	Choke Size	Flow Tubing Pressure
There are no Initial Data records to display.										

Completion and Test Data by Producing Formation			
Formation Name: HOXBAR		Code: 405HXBR	Class: INJ
Spacing Orders		Perforated Intervals	
Order No	Unit Size	From	To
There are no Spacing Order records to display.		1602	1777
Acid Volumes		Fracture Treatments	
NONE		350 SACKS 12/20 SAND, 750 BARRELS GELLED SALTWATER	

Formation	Top
HOXBAR	1396

Were open hole logs run? Yes
Date last log run: March 12, 2011

Were unusual drilling circumstances encountered? No
Explanation:

Other Remarks
CONVERT TO INJECTION. PERMIT NUMBER 2003880029

FOR COMMISSION USE ONLY	
Status: Accepted	1144472

API NO. 019-28554
 OTC PROD. UNIT NO.

(PLEASE TYPE OR USE BLACK INK ONLY)

OKLAHOMA CORPORATION COMMISSION
 Oil & Gas Conservation Division
 Post Office Box 52000
 Oklahoma City, Oklahoma 73152-2000
 Rule 165-10-3-25

RECEIVED

Form 1002A
 Rev. 2009

JAN 03 2020

☒ ORIGINAL
☐ AMENDED (Reason)

CONVERT TO INJ.

COMPLETION REPORT

TYPE OF DRILLING OPERATION

☒ STRAIGHT HOLE ☐ DIRECTIONAL HOLE ☐ HORIZONTAL HOLE
☒ SERVICE WELL

If directional or horizontal, see reverse for bottom hole location.

COUNTY CARTER SEC 5 TWP 25 RGE 2W
 LEASE NAME BRADY WELL NO. 88
 SE 1/4 NW 1/4 SW 1/4 NE 1/4 FSL OF 1/4 SEC 885 FWL OF 1/4 SEC 495
 ELEVATION Derick FL 1082 Ground 1075 Latitude (if known) Longitude (if known)
 OPERATOR NAME KODIAK O&G, INC. OTC / OCC OPERATOR NO. 23226
 ADDRESS 204 N. WALNUT ST.
 CITY MUENSTER STATE TX ZIP 76252

SPUD DATE 3/10/11
 DRILL FINISHED DATE 3/12/11
 DATE OF WELL COMPLETION 4/12/11
 1st PROD DATE 4/13/11
 RECOMP DATE 10/18/19

OKLAHOMA CORPORATION COMMISSION

LOCATE WELL

COMPLETION TYPE

☒ SINGLE ZONE
☐ MULTIPLE ZONE
 Application Date
☐ COMMINGLED
 Application Date
 LOCATION EXCEPTION ORDER NO.
 INCREASED DENSITY ORDER NO.

CASING & CEMENT (Attach Form 1002C)

TYPE	SIZE	WEIGHT	GRADE	FEET	PSI	SAX	TOP OF CMT
CONDUCTOR							
SURFACE							
INTERMEDIATE							
PRODUCTION	<u>5 1/2</u>	<u>15.5</u>	<u>3</u>	<u>2000</u>		<u>400</u>	<u>SURF</u>
LINER							
TOTAL DEPTH						<u>2000</u>	

PACKER 1580 BRAND & TYPE ARROW TENSION

PLUG TYPE PLUG TYPE
 PLUG TYPE PLUG TYPE

COMPLETION & TEST DATA BY PRODUCING FORMATION

FORMATION	<u>HOLB AIR</u>	<u>DEEX</u>				<u>No New Frac</u>
SPACING & SPACING ORDER NUMBER						
CLASS: Oil, Gas, Dry, Inj, Disp, Conm Disp, Sec	<u>INJ.</u>					
PERFORATED INTERVALS	<u>1602-1777</u>					
ACID/VOLUME	<u>none</u>					
FRACTURE TREATMENT (Fluids/Prop Amounts)	<u>350 sacks 12/20 sand</u> <u>750 Bbls 6elled saltwater</u>					

Min Gas Allowable (165-10-17-7)

Gas Purchaser/Measurer

☐

OR

First Sales Date

Oil Allowable (165-10-13-3)

INITIAL TEST DATA

INITIAL TEST DATE					
OIL-BBL/DAY					
OIL-GRAVITY (API)					
GAS-MCF/DAY					
GAS-OIL RATIO CU FT/BBL					
WATER-BBL/DAY					
PUMPING OR FLOWING					
INITIAL SHUT-IN PRESSURE					
CHOKE SIZE					
FLOW TUBING PRESSURE					

AS SUBMITTED

A record of the formations drilled through, and pertinent remarks are presented on the reverse. I declare that I have knowledge of the contents of this report and am authorized by my organization to make this report, which was prepared by me or under my supervision and direction, with the data and facts stated herein to be true, correct, and complete to the best of my knowledge and belief.

JOHN R. LAWS

JOHN R. LAWS

10/18/19 580-220-8455

1515 WARD RD., ARDMORE, OK. 73401

JR LAWS @ HOTMAIL.COM

PLEASE TYPE OR USE BLACK INK ONLY
FORMATION RECORD

Give formation names and tops, if available, or descriptions and thickness of formations drilled through. Show intervals cored or drillstem tested.

LEASE NAME BRADY

WELL NO. 88

NAMES OF FORMATIONS	TOP
Hoxbar	1396

FOR COMMISSION USE ONLY

ITD on file ☐ YES ☐ NO

APPROVED _____ DISAPPROVED _____

2) Reject Codes _____

Were open hole logs run? ☒ yes ☐ no

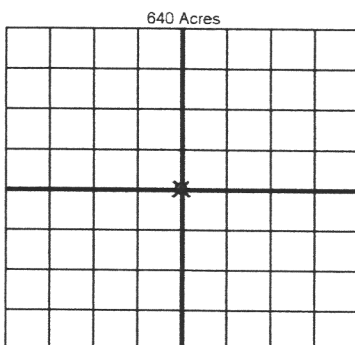
Date Last log was run 3/12/11

Was CO₂ encountered? ☐ yes ☒ no at what depths? _____

Was H₂S encountered? ☐ yes ☒ no at what depths? _____

Were unusual drilling circumstances encountered? ☐ yes ☒ no
If yes, briefly explain below

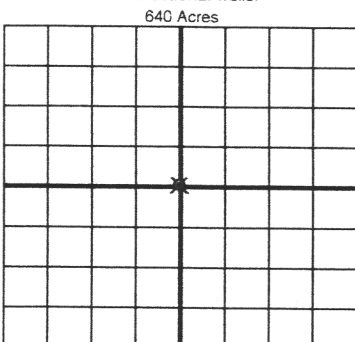
Other remarks CONVERT TO INT. Permit 2003880029



If more than three drainholes are proposed, attach a separate sheet indicating the necessary information.

Direction must be stated in degrees azimuth.
Please note, the horizontal drainhole and its end point must be located within the boundaries of the lease or spacing unit.

Directional surveys are required for all drainholes and directional wells.



BOTTOM HOLE LOCATION FOR DIRECTIONAL HOLE

SEC	TWP	RGE	COUNTY
Spot Location			
1/4	1/4	1/4	1/4
Measured Total Depth		True Vertical Depth	BHL From Lease, Unit, or Property Line

BOTTOM HOLE LOCATION FOR HORIZONTAL HOLE: (LATERALS)

LATERAL #1

SEC	TWP	RGE	COUNTY
Spot Location			
1/4	1/4	1/4	1/4
Depth of Deviation		Radius of Turn	Direction
Measured Total Depth		True Vertical Depth	BHL From Lease, Unit, or Property Line

LATERAL #2

SEC	TWP	RGE	COUNTY
Spot Location			
1/4	1/4	1/4	1/4
Depth of Deviation		Radius of Turn	Direction
Measured Total Depth		True Vertical Depth	BHL From Lease, Unit, or Property Line

LATERAL #3

SEC	TWP	RGE	COUNTY
Spot Location			
1/4	1/4	1/4	1/4
Depth of Deviation		Radius of Turn	Direction
Measured Total Depth		True Vertical Depth	BHL From Lease, Unit, or Property Line