

Oklahoma Corporation Commission  
Oil & Gas Conservation Division  
Post Office Box 52000  
Oklahoma City, Oklahoma 73152-2000  
Rule 165: 10-3-25

Form 1002A

API No.: 35125239490000

**Completion Report**

Spud Date: September 25, 2019

OTC Prod. Unit No.: 125-226270-0-0000

Drilling Finished Date: October 02, 2019

1st Prod Date: November 22, 2019

Completion Date: November 01, 2019

**Drill Type: STRAIGHT HOLE**

Well Name: JOE SMITH TRUST 2

Purchaser/Measurer:

Location: POTTAWATOMIE 28 8N 4E  
NW NW NW SW  
165 FNL 165 FWL of 1/4 SEC  
Derrick Elevation: 950 Ground Elevation: 938

First Sales Date:

Operator: GILLHAM PAUL OIL COMPANY 18920  
PO BOX 699  
105 E WANDA JACKSON BLVD  
MAUD, OK 74854-0699

Completion Type		Location Exception		Increased Density	
X	Single Zone	Order No		Order No	
	Multiple Zone	702867		There are no Increased Density records to display.	
	Commingled				

Casing and Cement								
Type		Size	Weight	Grade	Feet	PSI	SAX	Top of CMT
SURFACE		8 5/8	24	NEW	302	500	220	SURFACE
PRODUCTION		5.5	15.5	NEW	4410	800	170	3246

Liner								
Type	Size	Weight	Grade	Length	PSI	SAX	Top Depth	Bottom Depth
There are no Liner records to display.								

**Total Depth: 4570**

Packer		Plug	
Depth	Brand & Type	Depth	Plug Type
There are no Packer records to display.		4330	CIBP
		4360	CIBP

Initial Test Data
-------------------

Test Date	Formation	Oil BBL/Day	Oil-Gravity (API)	Gas MCF/Day	Gas-Oil Ratio Cu FT/BBL	Water BBL/Day	Pumpin or Flowing	Initial Shut-In Pressure	Choke Size	Flow Tubing Pressure
Nov 22, 2019	HUNTON	8.35	38	25	2994	85	PUMPING	650		

#### Completion and Test Data by Producing Formation

Formation Name: VIOLA

Code: 202VIOL

Class: DRY

##### Spacing Orders

Order No	Unit Size
684806	160

##### Perforated Intervals

From	To
4366	4370

##### Acid Volumes

600 GALLONS 15%, 35 BARRELS WATER
-----------------------------------

##### Fracture Treatments

There are no Fracture Treatments records to display.
--

Formation Name: HUNTON

Code: 269HNTN

Class: OIL

##### Spacing Orders

Order No	Unit Size
684806	160

##### Perforated Intervals

From	To
4040	4104

##### Acid Volumes

20,000 GALLONS 15%, 400 BARRELS WATER
---------------------------------------

##### Fracture Treatments

There are no Fracture Treatments records to display.
--

Formation	Top
UPPER CALVIN	3159
LOWER CALVIN	3379
EARLSBORO	3728
BARTLESVILLE	3835
WOODFORD	3859
HUNTON	3900
SYLVAN	4130
VIOLA	4220
WILCOX	4431

Were open hole logs run? Yes

Date last log run: October 01, 2019

Were unusual drilling circumstances encountered? No

Explanation:

#### Other Remarks

There are no Other Remarks.

#### FOR COMMISSION USE ONLY

1144320

Status: Accepted

API NO. 12523949  
OTC PROD. UNIT NO. 125226270

(PLEASE TYPE OR USE BLACK INK ONLY)

OKLAHOMA CORPORATION COMMISSION

Oil & Gas Conservation Division

Post Office Box 52000

Oklahoma City, Oklahoma 73152-2000

Rule 165:10-3-25

RECEIVED

Form 1002A

Rev. 2009

☒ ORIGINAL  
☐ AMENDED (Reason)

COMPLETION REPORT

TYPE OF DRILLING OPERATION

☒ STRAIGHT HOLE ☐ DIRECTIONAL HOLE ☐ HORIZONTAL HOLE  
☐ SERVICE WELL

If directional or horizontal, see reverse for bottom hole location.

COUNTY POTTAWATOMIE SEC 28 TWP 8N RGE 4E  
LEASE NAME JOE SMITH TRUST WELL NO. 2  
NW 1/4 NW 1/4 NW 1/4 SW 1/4 EBL OF FNL 1/4 SEC 165 FWL OF 1/4 SEC 165  
ELEVATION Derrick FL 950 Ground 938 Latitude (if known) Longitude (if known)  
OPERATOR NAME PAUL GILLHAM OIL COMPANY OTC / OCC OPERATOR NO. 18920  
ADDRESS PO BOX 699  
CITY MAUD STATE O.K. ZIP 74854

SPUD DATE SEPT 25, 2019

DRLG FINISHED DATE OCT 2, 2019

DATE OF WELL COMPLETION 11/1/2019

1st PROD DATE 11/22/2019

RECOMP DATE

OKLAHOMA CORPORATION COMMISSION

640 Acres  
LOCATE WELL

COMPLETION TYPE

☒ SINGLE ZONE  
☐ MULTIPLE ZONE  
☐ COMMINGLED  
LOCATION EXCEPTION ORDER NO. 7026867 7026868  
INCREASED DENSITY ORDER NO.

CASING & CEMENT (Attach Form 1002C)

TYPE	SIZE	WEIGHT	GRADE	FEET	PSI	SAX	TOP OF CMT
CONDUCTOR							
SURFACE	8 5/8	24 #	NEW	302	500	220	SURFACE
INTERMEDIATE							
PRODUCTION	5.5	15.5 #	NEW	4410	800	170	3246
LINER							
				TOTAL DEPTH	4,570		

PACKER @ BRAND & TYPE PLUG @ 4330 TYPE CIBP PLUG @ TYPE  
PACKER @ BRAND & TYPE PLUG @ 4360 TYPE CIBP PLUG @ TYPE

COMPLETION & TEST DATA BY PRODUCING FORMATION

FORMATION	VIOLA	Hunton				
SPACING & SPACING ORDER NUMBER	684806 (160)	684806 (160)				No Frac
CLASS: Oil, Gas, Dry, Inj, Disp, Comm Disp, Svc	DRY	oil				
PERFORATED INTERVALS	4366-4370	4090-4104				
		4040-4060				
ACID/VOLUME	600 GAL 15%	20,000 GAL 15%				
FRACTURE TREATMENT (Fluids/Prop Amounts)	35 BBLS WATER	400 BBls Water				

Min Gas Allowable (165:10-17-7)

Gas Purchaser/Measurer

OR  
Oil Allowable (165:10-13-3)

First Sales Date

INITIAL TEST DATA

INITIAL TEST DATE	11/22/2019
OIL-BBL/DAY	8.35
OIL-GRAVITY ( API)	38
GAS-MCF/DAY	25
GAS-OIL RATIO CU FT/BBL	3.35 to 4 2994
WATER-BBL/DAY	85
PUMPING OR FLOWING	PUMPING
INITIAL SHUT-IN PRESSURE	650 PSI
CHOKE SIZE	
FLOW TUBING PRESSURE	

AS SUBMITTED

A record of the formations drilled through, and pertinent remarks are presented on the reverse. I declare that I have knowledge of the contents of this report and am authorized by my organization to make this report, which was prepared by me or under my supervision and direction, with the data and facts stated herein to be true, correct, and complete to the best of my knowledge and belief.

Signature

STEVEN GILLHAM

NAME (PRINT OR TYPE)

Dec 1, 2019 (405) 406-8787

DATE PHONE NUMBER

PLEASE TYPE OR USE BLACK INK ONLY  
FORMATION RECORD

Give formation names and tops, if available, or descriptions and thickness of formations drilled through. Show intervals cored or drillstem tested.

NAMES OF FORMATIONS	TOP
UPPER CALVIN	3,159
LOWER CALVIN	3,379
EARLSBORO	3728
BARTLESVILLE	3,835
WOODFORD	3,859
HUNTON	3,900
SYLVAN	4,130
VIOLA	4,220
WILCOX	4,431

LEASE NAME JOE SMITH TRUST WELL NO. 2

FOR COMMISSION USE ONLY	
ITD on file <input type="checkbox"/> YES <input type="checkbox"/> NO	
APPROVED _____	DISAPPROVED _____
2) Reject Codes	
_____	
_____	
_____	
_____	

Were open hole logs run?	<input checked="" type="checkbox"/> yes <input type="checkbox"/> no
Date Last log was run	<u>10/1/2019</u>
Was CO <sub>2</sub> encountered?	<input type="checkbox"/> yes <input checked="" type="checkbox"/> no at what depths? _____
Was H <sub>2</sub> S encountered?	<input type="checkbox"/> yes <input checked="" type="checkbox"/> no at what depths? _____
Were unusual drilling circumstances encountered?	<input type="checkbox"/> yes <input checked="" type="checkbox"/> no
If yes, briefly explain below	

Other remarks:

\_\_\_\_\_

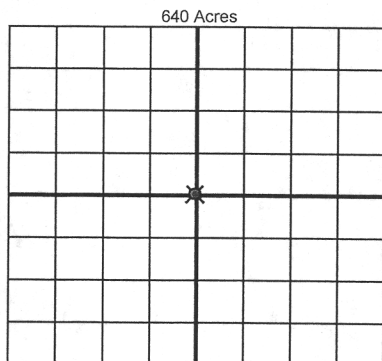
\_\_\_\_\_

\_\_\_\_\_

\_\_\_\_\_

\_\_\_\_\_

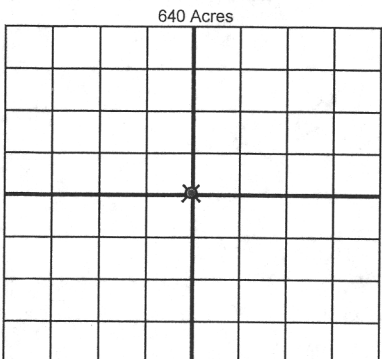
\_\_\_\_\_



If more than three drainholes are proposed, attach a separate sheet indicating the necessary information.

Direction must be stated in degrees azimuth.  
Please note, the horizontal drainhole and its end point must be located within the boundaries of the lease or spacing unit.

Directional surveys are required for all drainholes and directional wells.



BOTTOM HOLE LOCATION FOR DIRECTIONAL HOLE

SEC	TWP	RGE	COUNTY
Spot Location			
1/4	1/4	1/4	1/4
Feet From 1/4 Sec Lines		FSL	FWL
Measured Total Depth		True Vertical Depth	BHL From Lease, Unit, or Property Line:

BOTTOM HOLE LOCATION FOR HORIZONTAL HOLE: (LATERALS)

LATERAL #1			
SEC	TWP	RGE	COUNTY
Spot Location			
1/4	1/4	1/4	1/4
Feet From 1/4 Sec Lines		FSL	FWL
Depth of Deviation		Radius of Turn	Direction
Measured Total Depth		True Vertical Depth	Total Length
		BHL From Lease, Unit, or Property Line:	

LATERAL #2			
SEC	TWP	RGE	COUNTY
Spot Location			
1/4	1/4	1/4	1/4
Feet From 1/4 Sec Lines		FSL	FWL
Depth of Deviation		Radius of Turn	Direction
Measured Total Depth		True Vertical Depth	Total Length
		BHL From Lease, Unit, or Property Line:	

LATERAL #3			
SEC	TWP	RGE	COUNTY
Spot Location			
1/4	1/4	1/4	1/4
Feet From 1/4 Sec Lines		FSL	FWL
Depth of Deviation		Radius of Turn	Direction
Measured Total Depth		True Vertical Depth	Total Length
		BHL From Lease, Unit, or Property Line:	