

Oklahoma Corporation Commission  
Oil & Gas Conservation Division  
Post Office Box 52000  
Oklahoma City, Oklahoma 73152-2000  
Rule 165: 10-3-25

Form 1002A

API No.: 35051241960000

**Completion Report**

Spud Date: November 02, 2017

OTC Prod. Unit No.: 051-223601-0-1578

Drilling Finished Date: December 08, 2017

1st Prod Date: September 24, 2018

Completion Date: September 03, 2018

**Drill Type: HORIZONTAL HOLE**

Well Name: NORGE-MARCHAND UNIT 10-3-2H

Purchaser/Measurer: DCP MIDSTREAM

Location: GRADY 10 6N 8W  
NW NE NW SE  
2400 FSL 1760 FEL of 1/4 SEC  
Latitude: 35.00648 Longitude: -98.028218  
Derrick Elevation: 1290 Ground Elevation: 1270

First Sales Date: 9/25/2018

Operator: LIME ROCK RESOURCES III-A LP 23577

1111 BAGBY ST STE 4600  
HOUSTON, TX 77002-2559

Completion Type		Location Exception		Increased Density	
X	Single Zone	Order No		Order No	
	Multiple Zone	There are no Location Exception records to display.		There are no Increased Density records to display.	
	Commingled				

Casing and Cement							
Type	Size	Weight	Grade	Feet	PSI	SAX	Top of CMT
SURFACE	9 5/8	36.0	J55	998		250	SURFACE
PRODUCTION	7	29.0	P110	10300		600	8650

Liner								
Type	Size	Weight	Grade	Length	PSI	SAX	Top Depth	Bottom Depth
LINER	4 1/2	13.5	EX 110	6331	0	730	9964	16295

**Total Depth: 16300**

Packer		Plug	
Depth	Brand & Type	Depth	Plug Type
9878	AS-3	There are no Plug records to display.	

Initial Test Data										
Test Date	Formation	Oil BBL/Day	Oil-Gravity (API)	Gas MCF/Day	Gas-Oil Ratio Cu FT/BBL	Water BBL/Day	Pumpin or Flowing	Initial Shut-In Pressure	Choke Size	Flow Tubing Pressure
Sep 25, 2018	MARCHAND	213	44.9	136	1566	597	PUMPING	800	16/64	370

Completion and Test Data by Producing Formation			
Formation Name: MARCHAND		Code: 405MRCD	Class: OIL
<b>Spacing Orders</b>		<b>Perforated Intervals</b>	
<b>Order No</b>	<b>Unit Size</b>	<b>From</b>	<b>To</b>
100904	UNIT	11370	16300
<b>Acid Volumes</b>		<b>Fracture Treatments</b>	
1,321 BBLS 15% HCL ACID		1,800,665 GAL FLUID 1,854,802 LBS 100 MESH PROPPANT 4,776,387 LBS 40/70 PROPPANT	

Formation	Top
OOLITIC	8190
UPPER WADE	8708
LOWER WADE	8978
MEDRANO	9463
MEDRANO MASSIVE	9540
COTTAGE GROVE	9888
HOGSHOOTER	10656
MARCHAND SHALE	10785
MARCHAND "HOT" SHALE	10825
MARCHAND SAND	10828

Were open hole logs run? No  
Date last log run:  
  
Were unusual drilling circumstances encountered? Yes  
Explanation: SEE ATTACHED 1002A ADDENDUM  
BEHIND THE SURVEY DATA

Other Remarks
There are no Other Remarks.

Lateral Holes
Sec: 3 TWP: 6N RGE: 8W County: GRADY  NW   NW   NW   SE  2370 FSL   2364 FEL of 1/4 SEC  Depth of Deviation: 10416 Radius of Turn: 607 Direction: 363 Total Length: 4930  Measured Total Depth: 16300 True Vertical Depth: 10837   End Pt. Location From Release, Unit or Property Line: 2364

FOR COMMISSION USE ONLY	
Status: Accepted	1144092

COMPLETION REPORT  
NORGE-MARCHAND UNIT 10-3-2H  
1002A – REMARKS ADDENDUM  
October 3, 2018

Drld well to 11376', motor failed on bit & changed out. Attempted to circ & ream thru tight spot (unsuccessful), hole kept packing off. MU sidetrack BHA, TIH to 10300' & built trough (10459'-89'). Set whipstock @ 10230' & skidded rig 12/10/17.

MIRU for completion operations 1/11/18. Dressed location w/grader, spread rock around wellhead/ location & SD 1/24/18. MIRU Halliburton 2/26/18. MU & RIH w/GR&JB, sat down @ 10965'. POH w/same, RBIH, tagged TOL, set RBP in liner @ 10070' & RU to run CBL (tool failed). Replaced same & logged from 10004'-200'. POH/LD CBL tools. PU/RIH with CAST csg inspection tools & finished logging (10040'-surf). RIH w/retrieving tool, jarred RBP free & POH/LD (WO frac) 2/28/18.

MIRU frac equip (3/23/18), started frac operations 3/28/18 & finished 4/5/18. Began clean-out 4/13/18, hooked up FB/test equip & opened well to sales 4/20/18. Began hooking up prod. equip & laid flow-lines. Flow tested well (4/20/18 – 5/1/18) & rate steadily dropped off. SWI. Finished laying flowline to prod. vessels & tested, tied into gas gathering line & back-filled ditch. Finished hooking up flowline to separator, set/hooked up meter run & started surface pump. Tested well (5/2/18 - 6/9/18) & elected to SWI.

MIRU SLU (8/2/18), blew dn well, RIH w/OS & engaged, retrieved pump & SWI to equalize. RIH with fishing tools, engaged SV & POH/RDMO SLU. MIRU WO rig. ND tree & NU BOP's (tested), released pkr & SDFN. Pulled tbg & pkr, CO tools & MU BHA. TIH w/BHA (tagged), MU/RIH w/PS & washed to 11399'. POH w/BHA & inspected, found sand, rubber goods & frac plug parts. MU milling BHA, TIH & milled 11138'-374'. POH w/workstring, LD mill assy & called for WL. RU WLU, ran GR/BP to 11310'. Pumped down GR/BP, POH w/E-line & RU csg crew to run 3-1/2" csg patch. RIH w/5 jt patch, RD csg handling equip & RIH w/7 jts CS Hydril tbg inside liner patch. SDFN. Cont'd TIH w/csg patch, tagged BP @ 11310', PU to 11295' & pumped 25 bbls 2% KCl to flush ball seat. Dropped ball, held setting procedure meeting & pumped @ 1 BPM, saw ball seat pressure increase. Reduced pump rate to 1/2 BPM & pressure increased, bled off to 2000#, pumped add'l 31 bbls 2% KCl & POH w/setting tools from patch. SDFN.

AOL. MU milling BHA, TIH & started getting gas bubbles migrating up. RU pump line to tbg, & pumped 25 bbls 2% KCl. Stopped TIH & tested dn csg to test csg patch (OK). Cont'd TIH, tagged shoe, PU PS & started pumping @ 2 BPM. Milled thru shoe & lost circ. SD PS, PUH & lost fluid (well on vacuum). Closed backside & attempted to test, well on vacuum. Started pumping 35 bbls 2% KCl @ 3.5 BPM & succeeded in establishing returns. Drld thru shoe @ 11280', cont'd downhole & tagged @ 11285'. PUH to unplug mill (stuck), but was able to work tbg up/dn to free up. SDFN.

AOL. Opened well (on vacuum), pumped 75 bbls 2% KCl, TIH & MU/PU PS. Milled dn, pumping @ 3 BPM & getting returns. Milled thru BP @ 11292' & worked mill up/dn where BP was. TOH w/workstring, LD BHA & SDFN.

COMPLETION REPORT  
NORGE-MARCHAND UNIT 10-3-2H  
1002A – REMARKS ADDENDUM  
October 3, 2018  
Page 2

AOL. Checked pressure, well on vacuum. RU WL to run caliper tool (not working) & WO tech to bring correct electronics. RIH w/calibration tool & CCL, could not get past 10700'. POH w/calibration tool & RBIH w/just CCL, could not get past 10970'. Made several attempts w/tools & POH/RD E-line. MU inflatable pkr, TIH to 11289', dropped ½" ball & let fall for 45 min. Pumped 76 bbls of 2% KCl & rate increased, from ¾ to 1 BPM, after 40 bbls. Dropped ball #2, let fall 45 min & started pumping @ ½ BPM. Pumped tbgs volume (37 bbls), no pressure change. Increased pump rate to ¾ BPM, no sign of ball seating. Pulled 6 stands, racked back to pull tbgs out of liner patch & SDFN.

AOL. Cont'd TIH w/workstring & inflatable pkr. Spaced out w/10' pup & set @ 11214'. Pumped 2% KCl dn tbgs (30 bbls) & pressured up, seemed like pkr set. Tested pkr (OK). Confirmed good pressure test w/OCC rep. Started POH w/workstring & SDFN.

AOL. Finished POH w/workstring & inflatable pkr. MU pkr assy, RIH on 2-7/8" tbgs & set pkr @ 9878.54'. Tested pkr, tree & void (OK). SDFN.

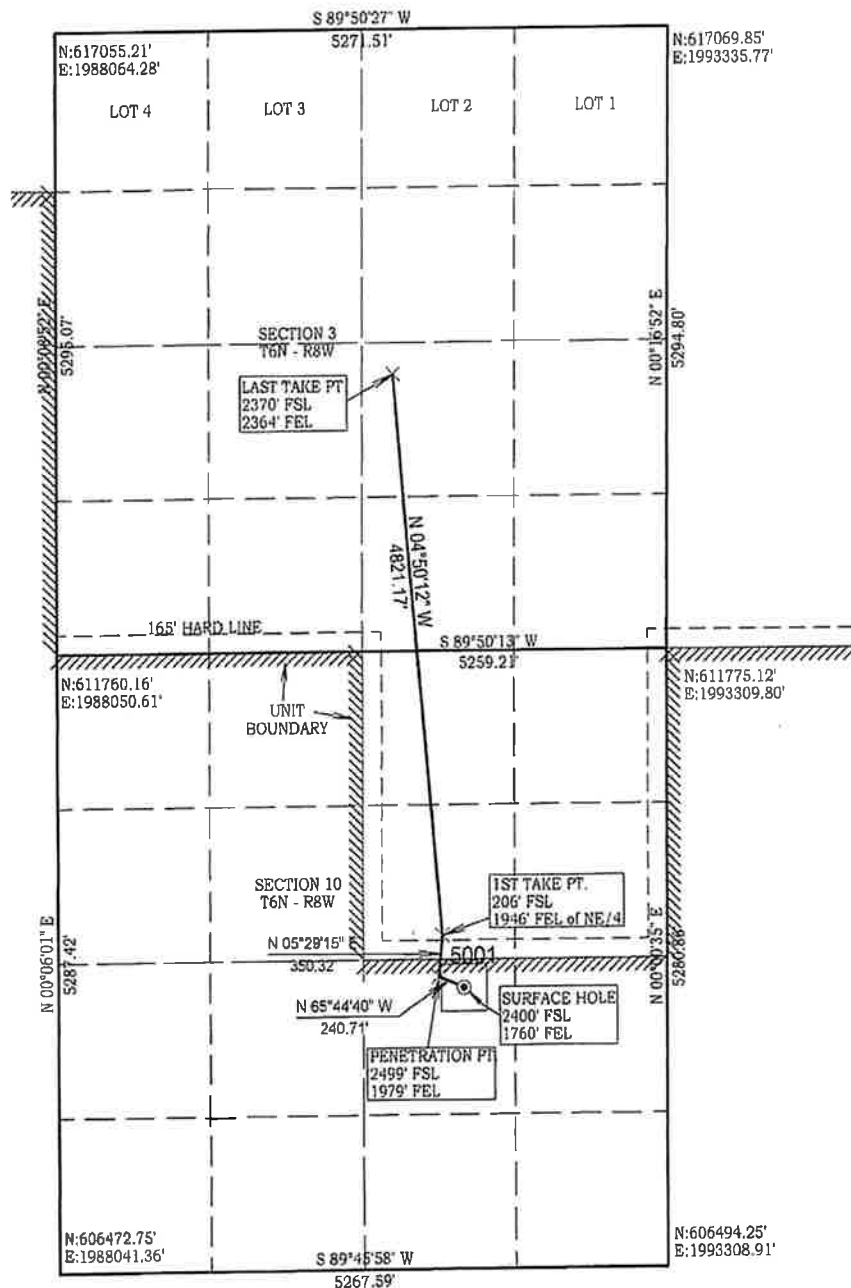
AOL. RD WO rig & all support equip. HU lines to WH, circ dn tbgs, dropped pump & PWOP 9/3/18.

**As-Drilled Plat**  
**M & M Land Surveying, Inc.**  
**520 "E" Street NW. Ardmore, OK. 73401**  
**Office 580-226-0446 Mobile 580-221-4999**

Company Name: LIME ROCK RESOURCES III-A, LP Lease Name: Norge-Marchand Unit 10-3-2H  
 Section 10 Township 6 North Range 8 West County Grady Oklahoma

Surface Location 2400' FSL - 1760' FEL Elevation 1270'

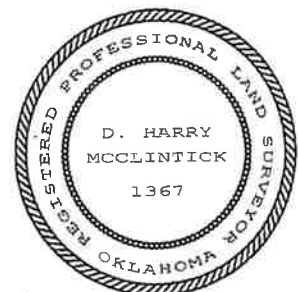
**ALL SECTION CORNER COORDINATES ARE NAD 27**



Bearings are GRID NORTH  
 SCALE 1" = 1500'  
 Job # 18398  
 Date 9/10/18

NAD 27 OK SOUTH  
 Surface Location  
 Latitude: 35.006480°  
 Longitude: 98.028085°  
 Y= 608,887  
 X= 1,991,549'

NAD 83 OK SOUTH  
 Surface Location  
 Latitude: 35.006545°  
 Longitude: 98.028408°  
 Y= 608,928  
 X= 1,959,993'



*D. Harry McClintick* 9/10/18  
 D. Harry McClintick, R.P.L.S. # 1367, CA # 3093

The coordinates for the well path for this location are CALCULATED ONLY and derived from data provided to me from Lime Rock Resources.