

Oklahoma Corporation Commission  
Oil & Gas Conservation Division  
Post Office Box 52000  
Oklahoma City, Oklahoma 73152-2000  
Rule 165: 10-3-25

Form 1002A

API No.: 35047206870004

**Completion Report**

Spud Date: October 30, 1971

OTC Prod. Unit No.: 047-028288-0-0000

Drilling Finished Date: November 02, 1971

**Amended**

1st Prod Date: July 20, 2001

Amend Reason: CHANGING FROM INJECTOR TO PRODUCER

Completion Date: July 10, 1971

Recomplete Date: December 03, 2019

**Drill Type: STRAIGHT HOLE**

Well Name: C K WALKER (C K WALKER NORTH 82) 82

Purchaser/Measurer:

Location: GARFIELD 13 22N 4W  
C NE SW NE  
990 FSL 990 FWL of 1/4 SEC  
Latitude: 36.385906 Longitude: -97.57394  
Derrick Elevation: 0 Ground Elevation: 1126

First Sales Date:

Operator: M M ENERGY INC 19118  
PO BOX 21904  
13927 QUAIL POINTE DR  
OKLAHOMA CITY, OK 73156-1904

Completion Type		Location Exception		Increased Density	
X	Single Zone	Order No		Order No	
	Multiple Zone	There are no Location Exception records to display.		There are no Increased Density records to display.	
	Commingled				

Casing and Cement							
Type	Size	Weight	Grade	Feet	PSI	SAX	Top of CMT
PRODUCTION	7	20	J	2067		500	SURFACE

Liner								
Type	Size	Weight	Grade	Length	PSI	SAX	Top Depth	Bottom Depth
There are no Liner records to display.								

**Total Depth: 2067**

Packer		Plug	
Depth	Brand & Type	Depth	Plug Type
There are no Packer records to display.		There are no Plug records to display.	

Initial Test Data										
Test Date	Formation	Oil BBL/Day	Oil-Gravity (API)	Gas MCF/Day	Gas-Oil Ratio Cu FT/BBL	Water BBL/Day	Pumpin or Flowing	Initial Shut-In Pressure	Choke Size	Flow Tubing Pressure
Dec 03, 2019	FORAKER	2	41			10	PUMPING			

Completion and Test Data by Producing Formation			
Formation Name: FORAKER		Code: 451FRKR	Class: OIL
<b>Spacing Orders</b>		<b>Perforated Intervals</b>	
<b>Order No</b>	<b>Unit Size</b>	<b>From</b>	<b>To</b>
NO SPACING		1510	1600
<b>Acid Volumes</b>		<b>Fracture Treatments</b>	
NONE		There are no Fracture Treatments records to display.	

Formation	Top
FORAKER	1510

Were open hole logs run? No  
Date last log run:

Were unusual drilling circumstances encountered? No  
Explanation:

Other Remarks
CHANGING FROM AN INJECTOR TO A PRODUCER

FOR COMMISSION USE ONLY	
Status: Accepted	1144466

RECEIVED

DEC 20 2019

Form 1002A  
Rev. 2009

API NO. 047-20687  
 OTC PROD. UNIT NO. 047-028288-0-0000  
 (PLEASE TYPE OR USE BLACK INK ONLY)

OKLAHOMA CORPORATION COMMISSION  
 Oil & Gas Conservation Division  
 Post Office Box 52000  
 Oklahoma City, Oklahoma 73152-2000  
 Rule 165:10-3-25

OKLAHOMA CORPORATION  
COMMISSION

☐ ORIGINAL  
☒ AMENDED (Reason) Changing from Injector to Producer

## COMPLETION REPORT

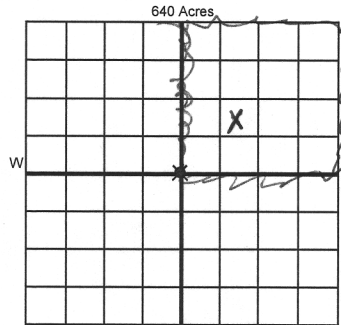
## TYPE OF DRILLING OPERATION

☒ STRAIGHT HOLE ☐ DIRECTIONAL HOLE ☐ HORIZONTAL HOLE  
☐ SERVICE WELL

If directional or horizontal, see reverse for bottom hole location.

COUNTY Garfield SEC 13 TWP 22n RGE 4w  
 LEASE NAME C K Walker WELL NO. 82  
 C 1/4 ne 1/4 sw 1/4 ne 1/4 FSL OF 1/4 SEC 990 FWL OF 1/4 SEC 990  
 ELEVATION Ground 1126 Latitude (if known) 36.385906 Longitude (if known) -97.57394  
 OPERATOR NAME MM Energy OTC / OCC OPERATOR NO. 19118  
 ADDRESS P O Box 21904  
 CITY Oklahoma City STATE OK ZIP 73156

SPUD DATE 10-30-1971  
 DRLG FINISHED DATE 11-2-1971  
 DATE OF WELL COMPLETION 7-10-1971  
 1st PROD DATE 7-20-2001  
 RECOMP DATE 12/3/2019



## COMPLETION TYPE

☒ SINGLE ZONE  
☐ MULTIPLE ZONE  
 Application Date  
☐ COMMINGLED  
 Application Date  
 LOCATION EXCEPTION ORDER NO.  
 INCREASED DENSITY ORDER NO.

## CASING &amp; CEMENT (Attach Form 1002C)

TYPE	SIZE	WEIGHT	GRADE	FEET	PSI	SAX	TOP OF CMT
CONDUCTOR							
SURFACE							
INTERMEDIATE							
PRODUCTION	7	20#	J	2067		500	surface
LINER							

PACKER @ BRAND & TYPE PLUG @ TYPE PLUG @ TYPE  
 PACKER @ BRAND & TYPE PLUG @ TYPE PLUG @ TYPE

TOTAL DEPTH 2,067

## COMPLETION &amp; TEST DATA BY PRODUCING FORMATION

FORMATION	Foraker					No Frac
SPACING & SPACING ORDER NUMBER	no spacing					
CLASS: Oil, Gas, Dry, Inj, Disp, Comm Disp, Svc	Oil					
PERFORATED INTERVALS	1510-1600					
ACID/VOLUME	None					
FRACTURE TREATMENT (Fluids/Prop Amounts)						

Min Gas Allowable (165:10-17-7)

Gas Purchaser/Measurer



OR

First Sales Date

Oil Allowable (165:10-13-3)

## INITIAL TEST DATA

INITIAL TEST DATE	12/3/2019					
OIL-BBL/DAY	2					
OIL-GRAVITY (API)	41					
GAS-MCF/DAY	0					
GAS-OIL RATIO CU FT/BBL						
WATER-BBL/DAY	10					
PUMPING OR FLOWING	pumping					
INITIAL SHUT-IN PRESSURE						
CHOKE SIZE						
FLOW TUBING PRESSURE						

AS SUBMITTED

A record of the formations drilled through, and pertinent remarks are presented on the reverse. I declare that I have knowledge of the contents of this report and am authorized by my organization to make this report, which was prepared by me or under my supervision and direction, with the data and facts stated herein to be true, correct, and complete to the best of my knowledge and belief.

SIGNATURE: *mike murphy* NAME (PRINT OR TYPE): mike murphy DATE: 12/11/2019 PHONE NUMBER: 405 463 3355  
 ADDRESS: P O Box 21904 CITY: Oklahoma City STATE: Ok ZIP: 73156 EMAIL ADDRESS: mike@mmenergy.net

## PLEASE TYPE OR USE BLACK INK ONLY

## FORMATION RECORD

Give formation names and tops, if available, or descriptions and thickness of formations drilled through. Show intervals cored or drillstem tested.

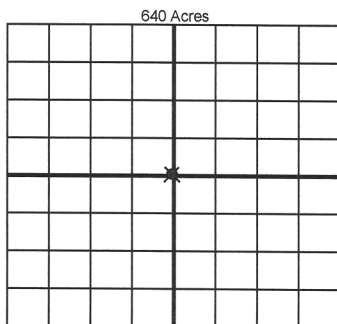
NAMES OF FORMATIONS	TOP
Foraker	1,510

LEASE NAME C K Walker WELL NO. 82

FOR COMMISSION USE ONLY	
ITD on file	<input type="checkbox"/> YES <input type="checkbox"/> NO
APPROVED	DISAPPROVED
2) Reject Codes	

Were open hole logs run?	<input type="checkbox"/> yes <input checked="" type="checkbox"/> no
Date Last log was run	
Was CO <sub>2</sub> encountered?	<input type="checkbox"/> yes <input checked="" type="checkbox"/> no at what depths? <u> </u>
Was H <sub>2</sub> S encountered?	<input type="checkbox"/> yes <input checked="" type="checkbox"/> no at what depths? <u> </u>
Were unusual drilling circumstances encountered?	<input type="checkbox"/> yes <input checked="" type="checkbox"/> no
If yes, briefly explain below	

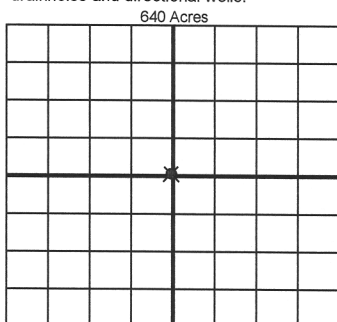
Other remarks: Changing from an Injector to a Producer



If more than three drainholes are proposed, attach a separate sheet indicating the necessary information.

Direction must be stated in degrees azimuth.  
Please note, the horizontal drainhole and its end point must be located within the boundaries of the lease or spacing unit.

Directional surveys are required for all drainholes and directional wells.



## BOTTOM HOLE LOCATION FOR DIRECTIONAL HOLE

SEC	TWP	RGE	COUNTY
Spot Location			
1/4	1/4	1/4	1/4
Measured Total Depth		True Vertical Depth	BHL From Lease, Unit, or Property Line:

## BOTTOM HOLE LOCATION FOR HORIZONTAL HOLE: (LATERALS)

## LATERAL #1

SEC	TWP	RGE	COUNTY
Spot Location			
1/4	1/4	1/4	1/4
Depth of Deviation		Radius of Turn	Direction
Measured Total Depth		True Vertical Depth	BHL From Lease, Unit, or Property Line:

## LATERAL #2

SEC	TWP	RGE	COUNTY
Spot Location			
1/4	1/4	1/4	1/4
Depth of Deviation		Radius of Turn	Direction
Measured Total Depth		True Vertical Depth	BHL From Lease, Unit, or Property Line:

## LATERAL #3

SEC	TWP	RGE	COUNTY
Spot Location			
1/4	1/4	1/4	1/4
Depth of Deviation		Radius of Turn	Direction
Measured Total Depth		True Vertical Depth	BHL From Lease, Unit, or Property Line: