

Oklahoma Corporation Commission
Oil & Gas Conservation Division
Post Office Box 52000
Oklahoma City, Oklahoma 73152-2000
Rule 165: 10-3-25

Form 1002A

API No.: 35049236110001

Completion Report

Spud Date: July 04, 1991

OTC Prod. Unit No.: 049-0261711-1-0000

Drilling Finished Date: August 13, 1991

Amended

1st Prod Date: September 06, 1991

Amend Reason: RECOMPLETION

Completion Date: September 06, 1991

Recomplete Date: September 18, 2019

Drill Type: STRAIGHT HOLE

Well Name: JOHNSON 1-34

Purchaser/Measurer: DCP

Location: GARVIN 34 1N 3W
C NE NE NE
330 FNL 330 FEL of 1/4 SEC
Derrick Elevation: 955 Ground Elevation: 943

First Sales Date:

Operator: ARDMORE PRODUCTION & EXPLORATION CO 16133
PO BOX 1988
301 W MAIN ST STE 415
ARDMORE, OK 73402-1988

Completion Type		Location Exception		Increased Density	
X	Single Zone	Order No		Order No	
	Multiple Zone	There are no Location Exception records to display.		701988	
	Commingle				

Casing and Cement							
Type	Size	Weight	Grade	Feet	PSI	SAX	Top of CMT
CONDUCTOR	16			43			
SURFACE	9 5/8	36	J-55	827		850	SURFACE
PRODUCTION	5 1/2	17/15.5	K-55/J-55	4223		850	1670

Liner								
Type	Size	Weight	Grade	Length	PSI	SAX	Top Depth	Bottom Depth
There are no Liner records to display.								

Total Depth: 6686

Packer	
Depth	Brand & Type
There are no Packer records to display.	

Plug	
Depth	Plug Type
5010	CIBP
6072	CIBP

Initial Test Data

Test Date	Formation	Oil BBL/Day	Oil-Gravity (API)	Gas MCF/Day	Gas-Oil Ratio Cu FT/BBL	Water BBL/Day	Pumpin or Flowing	Initial Shut-In Pressure	Choke Size	Flow Tubing Pressure
Sep 19, 2019	GOODWIN MID	15	28	5	300		PUMPING			

Completion and Test Data by Producing Formation

Formation Name: GOODWIN MID

Code: 401GDWNM

Class: OIL

Spacing Orders

Order No	Unit Size
65411	40

Perforated Intervals

From	To
4860	4930

Acid Volumes

1,500 GALLONS 7.5% HCL

Fracture Treatments

1,050 BARRELS OIL, 45,000 POUNDS 20/40
--

Formation	Top
MARKHAM	2060
HUMPHREYS	3210
SIMS	3492
UPPER GOODWIN	3981
MIDDLE GOODWIN	4900
SYCAMORE	6122
WOODFORD	6502

Were open hole logs run? Yes

Date last log run: August 09, 1991

Were unusual drilling circumstances encountered? No

Explanation:

Other Remarks

CIBP SET AT 6,072' WITH + 10' (2 SACKS) OF CEMENT DUMPED WITH BAILER BY ARBUCKLE WIRELINE ON FEBRUARY 4, 2019. SHOT FOUR SQUEEZE HOLES AT 4,860' TO 4,861' AND COULD NOT PUMP INTO THE BACKSIDE. DRILLED CEMENT TO 5,024' AND STOPPED, DID NOT DRILL OUT OF CEMENT. SET CIBP AT 5,010' TO ISOLATE BELOW. CEMENT BOND LOG RUNS INDICATED THAT TOP OF GOOD CEMENT IS 1,760' AND SPOTTY CEMENT TO 350' FROM SURFACE.

FOR COMMISSION USE ONLY

1143820

Status: Accepted

API NO. 04923611
OTC PROD. UNIT NO. 049-026171

(PLEASE TYPE OR USE BLACK INK ONLY)

OKLAHOMA CORPORATION COMMISSION
Oil & Gas Conservation Division
Post Office Box 52000
Oklahoma City, Oklahoma 73152-2000
Rule 165:10-3-25

RECEIVED

Form 1002A
Rev. 2009

SEP 25 2019

OKLAHOMA CORPORATION COMMISSION

☐ ORIGINAL
☒ AMENDED (Reason)

Recompletion

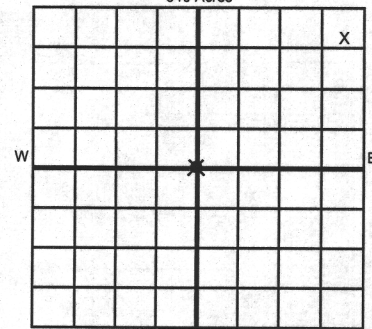
COMPLETION REPORT

TYPE OF DRILLING OPERATION

☒ STRAIGHT HOLE ☐ DIRECTIONAL HOLE ☐ HORIZONTAL HOLE
☐ SERVICE WELL

If directional or horizontal, see reverse for bottom hole location.

COUNTY	Garvin	SEC	34	TWP	1N	RGE	3W	SPUD DATE	7/4/91
LEASE NAME	Johnson							DRLG FINISHED DATE	8/13/91
C	1/4	NE	1/4	NE	1/4	NE	1/4	DATE OF WELL COMPLETION	9/6/91
ELEVATION Derrick FL	955.5	Ground	943	WELL NO.	1-34		1st PROD DATE	9/6/91	
OPERATOR NAME	Ardmore Production & Exploration Co.							RECOMP DATE	9/18/19
ADDRESS	PO Box 1988							OTC / OCC OPERATOR NO.	16133
CITY	Ardmore		STATE	OK		ZIP	73402		



LOCATE WELL

COMPLETION TYPE

<input checked="" type="checkbox"/> SINGLE ZONE	
<input type="checkbox"/> MULTIPLE ZONE	
Application Date	
COMINGLED	
Application Date	
LOCATION EXCEPTION ORDER NO.	
INCREASED DENSITY ORDER NO.	701988

CASING & CEMENT (Attach Form 1002C)

TYPE	SIZE	WEIGHT	GRADE	FEET	PSI	SAX	TOP OF CMT
CONDUCTOR	16			43			
SURFACE	9 5/8	36	J55	827		850	Surface
INTERMEDIATE	5 1/2	17	K55	2,438			
PRODUCTION	5 1/2	15.5	J55	4223		850	1670'
LINER							

PACKER @ _____ BRAND & TYPE _____ PLUG @ 6072' TYPE CIBP PLUG @ 5010' TYPE CIBP TOTAL DEPTH 6686
PACKER @ _____ BRAND & TYPE _____ PLUG @ _____ TYPE _____ PLUG @ _____ TYPE _____

COMPLETION & TEST DATA BY PRODUCING FORMATION

FORMATION	Sycamore	Middle Goodwin				
SPACING & SPACING ORDER NUMBER	229817	40 ac 65411				
CLASS: Oil, Gas, Dry, Inj, Disp, Comm Disp, Svc	Oil	Oil				
PERFORATED INTERVALS	6400-6416					
	6382-6390	4860-4861				
	6350-6370	4898-4930				
ACID/VOLUME	5000	1500 gal - 7.5% HCL				
FRACTURE TREATMENT (Fluids/Prop Amounts)	10000	1050 bbl Oil				
	Water	45,000# 20/40				

Min Gas Allowable (165:10-17-7)

Gas Purchaser/Measurer

DCP

OR
Oil Allowable (165:10-13-3)

First Sales Date

INITIAL TEST DATA

INITIAL TEST DATE	9/6/1991	9/19/2019			
OIL-BBL/DAY	150	15			
OIL-GRAVITY (API)	40	28			
GAS-MCF/DAY	150	5			
GAS-OIL RATIO CU FT/BBL	1000	300			
WATER-BBL/DAY	50	0			
PUMPING OR FLOWING	Flowing	Pumping			
INITIAL SHUT-IN PRESSURE	1100				
CHOKE SIZE	1/4				
FLOW TUBING PRESSURE	525				

AS SUBMITTED

A record of the formations drilled through, and pertinent remarks are presented on the reverse. I declare that I have knowledge of the contents of this report and am authorized by my organization to make this report, which was prepared by me or under my supervision and direction, with the data and facts stated herein to be true, correct, and complete to the best of my knowledge and belief.

SIGNATURE Charles E Teacle III
PO Box 1988 Ardmore OK 73401
ADDRESS CITY STATE ZIP
DATE 9/23/2019 PHONE NUMBER 580.223.2292
EMAIL ADDRESS ardmore_production@hotmail.com

PLEASE TYPE OR USE BLACK INK ONLY
FORMATION RECORD

Give formation names and tops, if available, or descriptions and thickness of formations drilled through. Show intervals cored or drillstem tested.

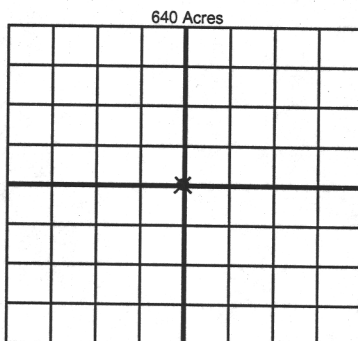
NAMES OF FORMATIONS	TOP (MD)
Markham	2,060
Humphreys	3,210
Sims	3,492
Upper Goodwin	3,981
Middle Goodwin	4,900
Sycamore	6,122
Woodford	6,502

LEASE NAME _____ WELL NO. _____

FOR COMMISSION USE ONLY	
ITD on file <input type="checkbox"/> YES <input type="checkbox"/> NO	
APPROVED _____	DISAPPROVED _____
2) Reject Codes	

Were open hole logs run?	<input checked="" type="checkbox"/> yes <input type="checkbox"/> no
Date Last log was run	8/9/1991
Was CO ₂ encountered?	<input type="checkbox"/> yes <input checked="" type="checkbox"/> no at what depths? _____
Was H ₂ S encountered?	<input type="checkbox"/> yes <input checked="" type="checkbox"/> no at what depths? _____
Were unusual drilling circumstances encountered?	<input type="checkbox"/> yes <input checked="" type="checkbox"/> no
If yes, briefly explain below	

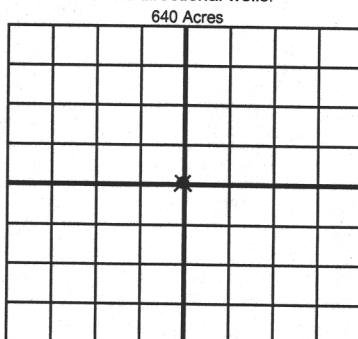
Other remarks: CIBP set at 6072' with +10 feet (2 sks) of cement dumped with bailer by Arbuckle Wireline on 2/4/19. Shot four sqz holes at 4860' to 4861' and could not pump into the backside. Drilled cement to 5024 and stopped, did not drill out of cement. Set CIBP at 5010' to isolate below. CBL runs indicated that top of good cement is 1760' and spotty cement to 350' from surface.



If more than three drainholes are proposed, attach a separate sheet indicating the necessary information.

Direction must be stated in degrees azimuth. Please note, the horizontal drainhole and its end point must be located within the boundaries of the lease or spacing unit.

Directional surveys are required for all drainholes and directional wells.



BOTTOM HOLE LOCATION FOR DIRECTIONAL HOLE

SEC	TWP	RGE	COUNTY
Spot Location			
1/4	1/4	1/4	1/4
Measured Total Depth		True Vertical Depth	Feet From 1/4 Sec Lines FSL FWL
BHL From Lease, Unit, or Property Line:			

BOTTOM HOLE LOCATION FOR HORIZONTAL HOLE: (LATERALS)

LATERAL #1			
SEC	TWP	RGE	COUNTY
Spot Location			
1/4	1/4	1/4	1/4
Depth of Deviation		Radius of Turn	Direction
Measured Total Depth		True Vertical Depth	Total Length
BHL From Lease, Unit, or Property Line:			

LATERAL #2			
SEC	TWP	RGE	COUNTY
Spot Location			
1/4	1/4	1/4	1/4
Depth of Deviation		Radius of Turn	Direction
Measured Total Depth		True Vertical Depth	Total Length
BHL From Lease, Unit, or Property Line:			

LATERAL #3			
SEC	TWP	RGE	COUNTY
Spot Location			
1/4	1/4	1/4	1/4
Depth of Deviation		Radius of Turn	Direction
Measured Total Depth		True Vertical Depth	Total Length
BHL From Lease, Unit, or Property Line:			