

Oklahoma Corporation Commission
Oil & Gas Conservation Division
Post Office Box 52000
Oklahoma City, Oklahoma 73152-2000
Rule 165: 10-3-25

Form 1002A

API No.: 35063248570000

Completion Report

Spud Date: November 23, 2018

OTC Prod. Unit No.:

Drilling Finished Date: December 18, 2018

1st Prod Date:

Completion Date: January 09, 2019

Drill Type: STRAIGHT HOLE

SERVICE WELL

Well Name: HAGGARD 1-12 SWD

Purchaser/Measurer:

Location: HUGHES 12 7N 9E
NW SW SW SE
438 FSL 2321 FEL of 1/4 SEC
Latitude: 35.08798 Longitude: -96.30781
Derrick Elevation: 889 Ground Elevation: 871

First Sales Date:

Operator: WATERBRIDGE ARKOMA OPERATING LLC 24139

1501 E PIERCE AVE
MCALESTER, OK 74501-3808

Completion Type		Location Exception		Increased Density	
X	Single Zone	Order No		Order No	
	Multiple Zone	There are no Location Exception records to display.		There are no Increased Density records to display.	
	Commingled				

Casing and Cement							
Type	Size	Weight	Grade	Feet	PSI	SAX	Top of CMT
SURFACE	9 5/8	36	J-55	1510		450	SURFACE
PRODUCTION	7	26	J-55	5782		600	SURFACE

Liner								
Type	Size	Weight	Grade	Length	PSI	SAX	Top Depth	Bottom Depth
There are no Liner records to display.								

Total Depth: 7349

Packer		Plug	
Depth	Brand & Type	Depth	Plug Type
5256	ASI-X	There are no Plug records to display.	

Initial Test Data

Test Date	Formation	Oil BBL/Day	Oil-Gravity (API)	Gas MCF/Day	Gas-Oil Ratio Cu FT/BBL	Water BBL/Day	Pumpin or Flowing	Initial Shut- In Pressure	Choke Size	Flow Tubing Pressure
-----------	-----------	----------------	----------------------	----------------	----------------------------	------------------	----------------------	---------------------------------	---------------	-------------------------

There are no Initial Data records to display.

Completion and Test Data by Producing Formation

Formation Name: SIMPSONCode: 202SMPSClass: COMM DISP

Spacing Orders		Perforated Intervals	
Order No	Unit Size	From	To
There are no Spacing Order records to display.		5285	5710
Acid Volumes		Fracture Treatments	
4,800 GALLONS 7.5% HCL		There are no Fracture Treatments records to display.	

Formation Name: ARBUCKLECode: 169ABCKClass: COMM DISP

Spacing Orders		Perforated Intervals	
Order No	Unit Size	From	To
There are no Spacing Order records to display.		There are no Perf. Intervals records to display.	
Acid Volumes		Fracture Treatments	
11,850 GALLONS 20% HCL		There are no Fracture Treatments records to display.	

Formation	Top
WOODFORD SHALE	4902
VIOLA LIME	5211
SIMPSON	5280
ARBUCKLE	5956

Were open hole logs run? Yes
Date last log run: December 27, 2018

Were unusual drilling circumstances encountered? Yes
Explanation: SLOUGHING SHALES IN ATOKA SECTION

Other Remarks

OCC - UIC ORDER NUMBER 686495, THE ARBUCKLE AND PART OF THE SIMPSON IS AN OPEN HOLE COMPLETION FROM BOTTOM OF THE 7" CASING AT 5782' TO TOTAL DEPTH AT 7349'.

FOR COMMISSION USE ONLY

1142622

Status: Accepted

RECEIVED

MAY 24 2019

Oklahoma Corporation
Commission

Form 1002A
Rev. 2009

API NO. **063-24857**

OTC PROD.

UNIT NO.

(PLEASE TYPE OR USE BLACK INK ONLY)

OKLAHOMA CORPORATION COMMISSION
Oil & Gas Conservation Division
Post Office Box 52000
Oklahoma City, Oklahoma 73152-2000
Rule 165:10-3-25

☒ ORIGINAL
☐ AMENDED (Reason) _____

COMPLETION REPORT

TYPE OF DRILLING OPERATION
☒ STRAIGHT HOLE ☐ DIRECTIONAL HOLE ☐ HORIZONTAL HOLE
☒ SERVICE WELL
If directional or horizontal, see reverse for bottom hole location.

COUNTY **HUGHES** SEC **12** TWP **7N** RGE **9E**
LEASE NAME **HAGGARD** WELL NO. **1-12 SWD**
FSL OF 1/4 SEC **438** DATE OF WELL COMPLETION **11/23/18**
ELEVATION **889** Ground **871** FSL OF 1/4 SEC **438** DATE OF WELL COMPLETION **11/23/18**
Derrick FL **889** Latitude (if known) **35.08798** Longitude (if known) **-96.30781**
OPERATOR NAME **WATERBRIDGE OKLAHOMA OPERATING LLC** OTC/OCC OPERATOR NO. **24139**
ADDRESS **840 GESSNER RD, SUITE 100**
CITY **HOUSTON** STATE **TX** ZIP **77024**

640 Acres

W E

LOCATE WELL

COMPLETION TYPE
☒ SINGLE ZONE
☐ MULTIPLE ZONE
Application Date
☐ COMMINGLED
Application Date
LOCATION EXCEPTION
ORDER NO.
INCREASED DENSITY
ORDER NO.

CASING & CEMENT (Form 1002C must be attached)

TYPE	SIZE	WEIGHT	GRADE	FEET	PSI	SAX	TOP OF CMT
CONDUCTOR						450	
SURFACE	95/8	36	J55	1510		445	CIRC SURF Per 1002C
INTERMEDIATE							
PRODUCTION	7	26	J55	5782		600	CIRC SURF
LINER							
						TOTAL DEPTH	7349

PACKER @ **5256** BRAND & TYPE **ASI-X** PLUG @ TYPE PLUG @ TYPE
PACKER @ BRAND & TYPE PLUG @ TYPE PLUG @ TYPE

COMPLETION & TEST DATA BY PRODUCING FORMATION **202 SMP3 169ACK**

FORMATION	SIMPSON	ARBuckle					
SPACING & SPACING ORDER NUMBER							No Frac
CLASS: Oil, Gas, Dry, Inj, Disp, Comm Disp, Svc	Comm DISP	Comm DISP					
PERFORATED INTERVALS	5285-5710	OPEN hole ON 5782-7349					
ACID/VOLUME	4800 gals 7.5% HCL	11,850 gal 20% HCL					
FRACTURE TREATMENT (Fluids/Prop Amounts)							

Min Gas Allowable (165:10-17-7)
OR
Oil Allowable (165:10-13-3)

Gas Purchaser/Measurer
First Sales Date

INITIAL TEST DATA

INITIAL TEST DATE							
OIL-BBL/DAY							
OIL-GRAVITY (API)							
GAS-MCF/DAY							
GAS-OIL RATIO CU FT/BBL							
WATER-BBL/DAY							
PUMPING OR FLOWING							
INITIAL SHUT-IN PRESSURE							
CHOKE SIZE							
FLOW TUBING PRESSURE							

AS SUBMITTED

A record of the formations drilled through, and pertinent remarks are presented on the reverse. I declare that I have knowledge of the contents of this report and am authorized by my organization to make this report, which was prepared by me or under my supervision and direction, with the data and facts stated herein to be true, correct, and complete to the best of my knowledge and belief.

Jessica High 5/22/19 (823) 871-4064
SIGNATURE NAME (PRINT OR TYPE) DATE PHONE NUMBER
840 Gessner Rd, Suite 100 Houston, TX 77024 jessica.high@h2obridge.com
ADDRESS CITY STATE ZIP EMAIL ADDRESS

Give formation names and tops, if available, or descriptions and thickness of formations drilled through. Show intervals cored or drillstem tested.

HAGGARD

WELL NO. 1-12 SWD

NAMES OF FORMATIONS	TOP
SIMPSON	5280
WOODFORD SHALE	4902
VIOLA LIME	5211
ARBUCKLE	5956

FOR COMMISSION USE ONLY	
ITD on file	<input type="checkbox"/> YES <input type="checkbox"/> NO
APPROVED	DISAPPROVED
2) Reject Codes	

Were open hole logs run? ✓ yes ___ no

Date Last log was run 12/27/2018

Was CO₂ encountered? ___ yes ✓ no at what depths? _____

Was H₂S encountered? ___ yes ✓ no at what depths? _____

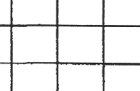
Were unusual drilling circumstances encountered? ✓ yes ___ no
If yes, briefly explain below

SLOUGHING SHALES IN ATOKA SECTION

Other remarks:

ORDER 686495

640 Acres



If more than three drainholes are proposed, attach a separate sheet indicating the necessary information.

Direction must be stated in degrees azimuth.
Please note, the horizontal drainhole and its end
point must be located within the boundaries of the
lease or spacing unit.

Directional surveys are required for all drainholes and directional wells.

640 Acres

A 10x10 grid of squares. A thick vertical line runs down the center, separating the first column from the remaining nine columns. This represents a division of 640 acres into two equal parts of 320 acres each.

SEC	TWP	RGE	COUNTY
Spot Location			
1/4	1/4	1/4	1/4
Measured Total Depth		True Vertical Depth	Feet From 1/4 Sec Lines
			FSL
		FWL	
BHL From Lease, Unit, or Property Line:			

LATERAL #1						
SEC	TWP	RGE	COUNTY			
Spot Location						
1/4		1/4		1/4		Feet From 1/4 Sec Lines
FSL		FWL				
Depth of Deviation		Radius of Turn		Direction		Total Length
Measured Total Depth		True Vertical Depth		BHL From Lease, Unit, or Property Line:		

SEC	TWP	RGE	COUNTY
Spot Location			
1/4	1/4	1/4	1/4
Feet From 1/4 Sec Lines		FSL	FWL
Depth of Deviation	Radius of Turn	Direction	Total Length
Measured Total Depth	True Vertical Depth	BHL From Lease, Unit, or Property Line:	

SEC	TWP	RGE	COUNTY
Spot Location			
1/4	1/4	1/4	1/4
Feet From 1/4 Sec Lines		FSL	FWL
Depth of Deviation	Radius of Turn	Direction	Total Length
Measured Total Depth	True Vertical Depth	BHL From Lease, Unit, or Property Line:	

Bottomhole Pressure Survey Report

Operator: WATERBRIDGE ARKOMA OPERATING LLC.

Lease Name: HAGGARID

Well Number: 1-12 SWD

Date: 1/11/2019

Status: SHUT-IN ^{INITIAL} STATIC BHP Fluid Top: SURFACE

Shut-In Time: 72 HR SITP: 62 PSIG

Depth Ft	Pressure Psig	Temp °F	Gradient Psig/Ft	Data Comment
Surface	62	52		
1,000	489	83	0.489	
2,000	919	99	0.460	
3,000	1,349	119	0.450	
4,000	1,777	138	0.444	
5,000	2,209	160	0.442	
5,960	2,679	174	0.449	Top Arbuckle
6,000	2,695	174	0.449	
6,655	3,014	179	0.453	Mid-Point Arbuckle
7,000	3,183	182	0.455	
7,338	3,350	184	0.457	TD

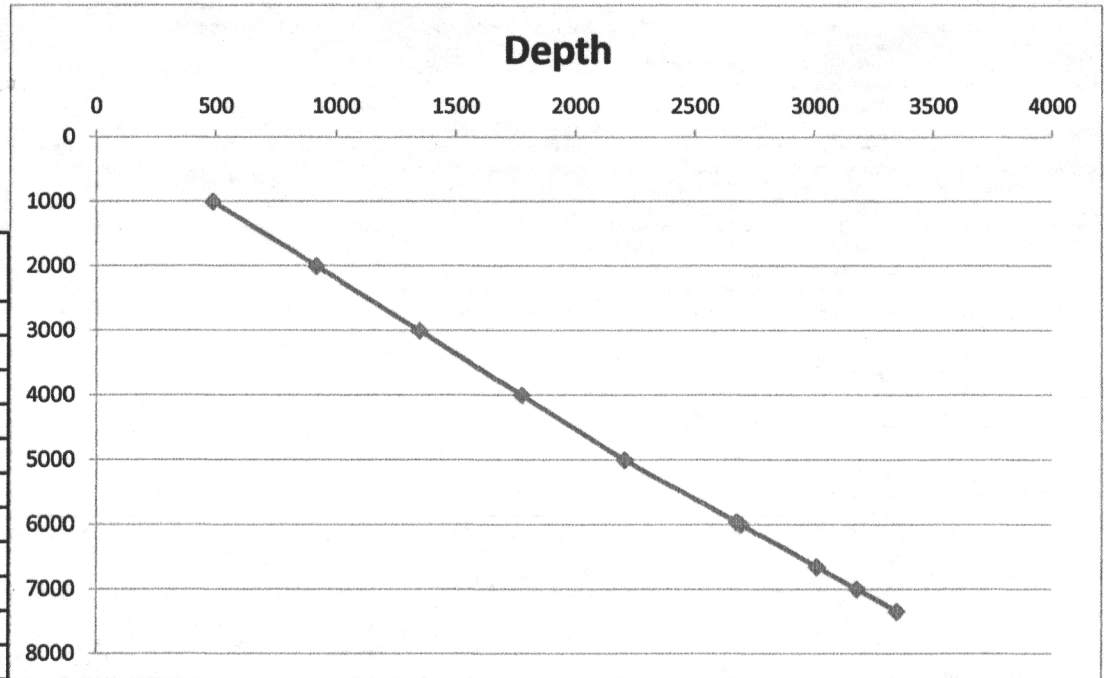


Image @ 1002A